

# Underground Utility District (UUD) Program Update

2 May 2017

# Overview

## Agenda

- I. Current Status
- II. District Nomination Board (DNB) Process
- III. Next Steps
- IV. Questions

# UUD Current Status



# District Nomination Board Recommendations

Rank	
1	<b>Otis Drive- High to Broadway</b> and south of Otis Dr including Broadway, Pearl St, Versailles Ave, Mound St, Waterton St and Court St
2	<b>Webster St. - all crossings</b> - Central Avenue to Pacific Avenue including Eagle Ave - West of Constitution Way
3	<b>Broadway (Buena Vista to Clement)</b>
4	<b>Broadway - La Jolla to Encinal;</b> La Jolla
5	<b>Central Ave - Eighth St to Webster</b> including Garden way
6	<b>Fernside - Encinal to High Street,</b> Include lines on Lincoln Park access road
7	<b>Park St - San Jose to Otis</b>



# District Nomination Board Process

- DNB Members were appointed by the City Council in April of 2016
  - Four members from the Public and one member from Public Works
    - The selected members from the public resided in different parts of the city (West End, East End, Bay Farm Island).
- All meetings were public meetings
  - DNB met seven times between June 30, 2016 and December 8, 2016.
  - Considered all areas of the city and identified areas that best met the criteria in the UUD Policy.
  - DNB developed an initial list of 53 areas and paired it down to 14 which were then analyzed on a scorecard with the top seven areas being recommended.

# UUD Criteria

- UUD recommendations are based on seven criteria divided into two tiers
  - Tier 1
    - Road Classification
    - Heavy Concentration of Aerial Facilities
    - Aesthetics
    - Deteriorated Facilities
  - Tier 2
    - Foliage
    - Coordination with other City Projects
    - Interconnectivity to Existing Underground

# Scorecard Measures

	Measure Number:		Weight (0-6)	Comments
1. Number of Eyes That See	1.1	Average Daily Traffic (ADT)	6.0	Value of ADT is related to street classification, Entryways, public use
	1.2	Bike Route	1.5	Value is either 1 or zero. No data was available showing the number of bicyclist on each route. Bicycling accounts for only 1% of commuters. Weight needs to ensure the value gives the proper relative importance to the other measures which range from 0 to 1 (unweighted)
	1.3	Bus Route	2.5	Many travelers; passenger wait at bus stops & people walk to the bus stops which help capture # pedestrians.
2. Visual Impact	2.1	Number of Poles	3.0	Poles are very visible due to their width and height plus the various pole attachments.
	2.2	# Connections to Poles	4.0	
	2.3	# Wires Crossing Street	4.5	Most Visible aspect
3. Impact to special areas of interest	3.1	Area of Interest Frontage	3.5	Accounts for historical, parks & recreational, commercial, & civic frontages
	3.2	Tree/Wire Conflicts	3.3	

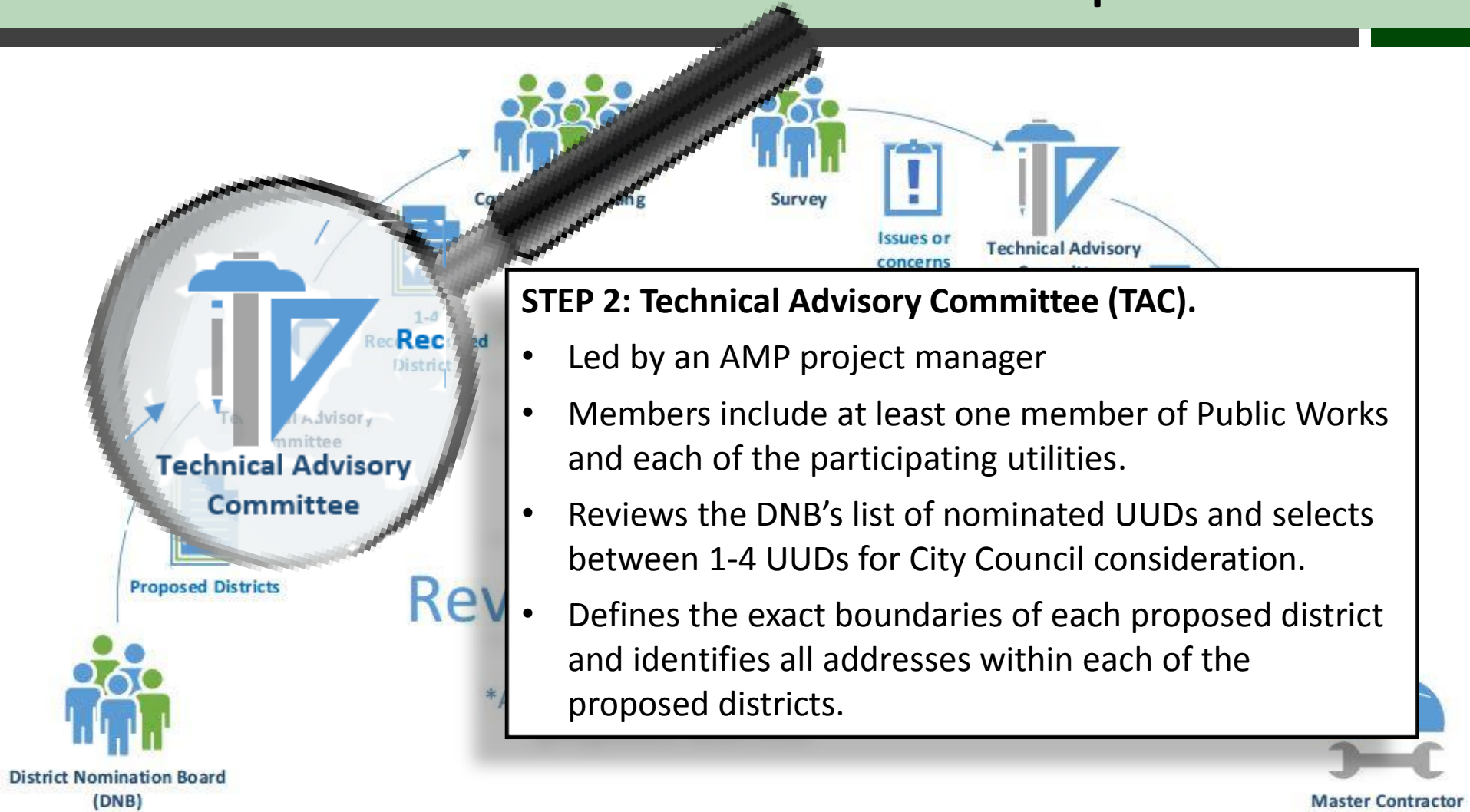
# The Scorecard

Row Labels	Sum of Ranking	1. Number of Eyes That See			2. Visual Impact		3. Impact to special areas of interest	
		Sum of Measure 1 Subscore	Sum of Measure 2 Subscore	Sum of Measure 3 Subscore	Sum of Measure 1 Subscore	Sum of Measure 2 Subscore	Sum of Measure 3 Subscore	Sum of Total Score
Otis Drive- High to Broadway and south of Otis Dr including Broadway, Pearl St, Versailles Ave, Mound St, Waterton St and Court St	1	● 8.679	● 8.357	● 4.871	● 8.679	● 8.357	● 4.871	● 21.91
Webster St. - all crossings - Central Avenue to Pacific Avenue including Eagle Ave - West of Constitution Wa	2	● 8.500	● 6.643	● 5.857	● 8.500	● 6.643	● 5.857	● 21.00
Broadway (Buena Vista to Clement)	3	● 5.786	● 10.857	● 4.314	● 5.786	● 10.857	● 4.314	● 20.96
Broadway - La Jolla to Encinal; La Jolla	4	● 5.554	● 7.607	● 5.050	● 5.554	● 7.607	● 5.050	● 18.21
Central Ave - Eighth St to Webster Including Garden way	5	● 6.500	● 4.929	● 4.900	● 6.500	● 4.929	● 4.900	● 16.33
Fernside from Encinal to High Street, Include lines on Lincoln Park access road (UUD 23)	6	● 6.411	● 8.250	● 1.664	● 6.411	● 8.250	● 1.664	● 16.33
Park St - San Jose to Otis	7	● 7.107	● 6.357	● 2.636	● 7.107	● 6.357	● 2.636	● 16.10

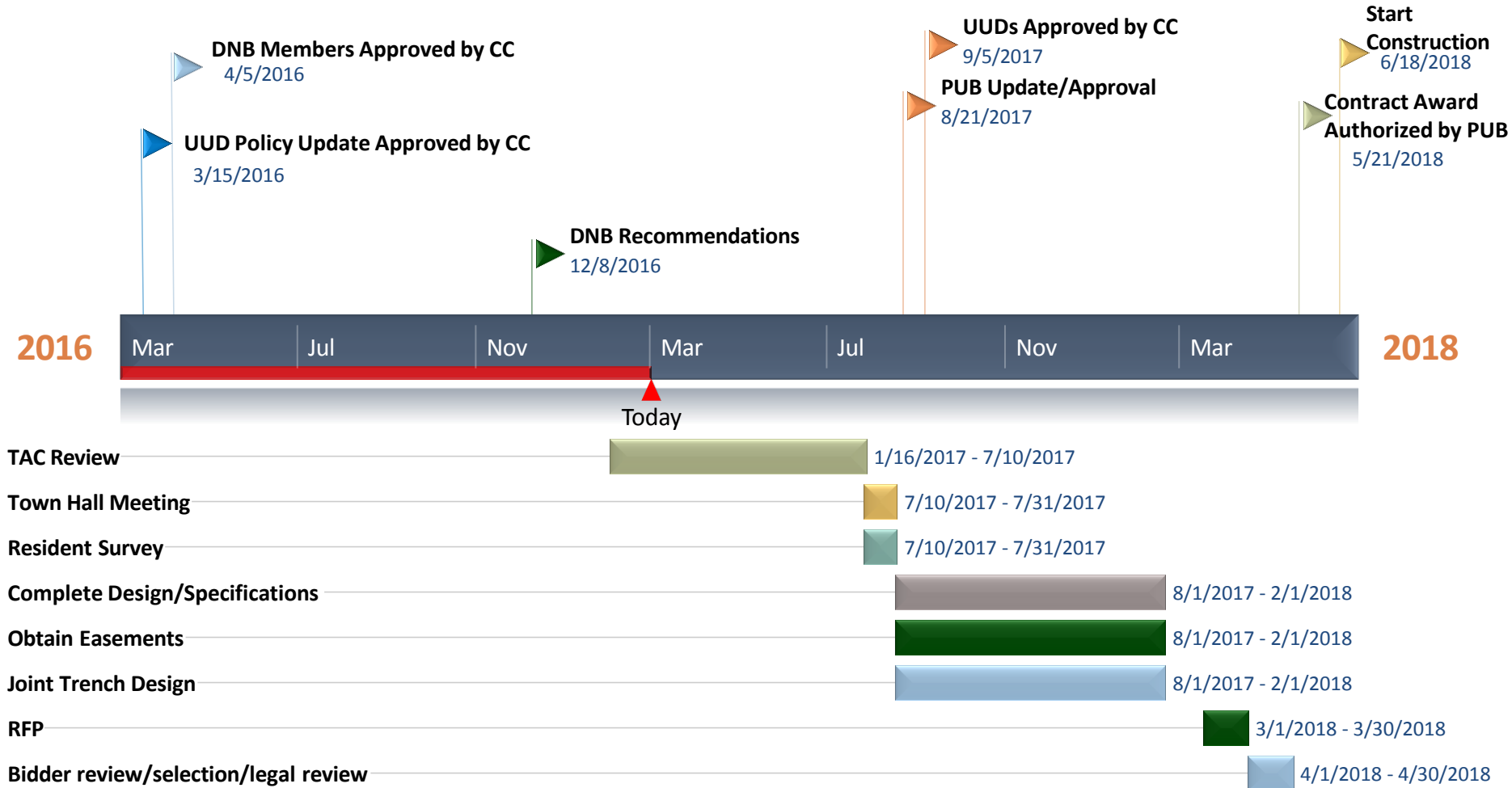
●	Top 33%
●	Middle 33%
●	Bottom 33%



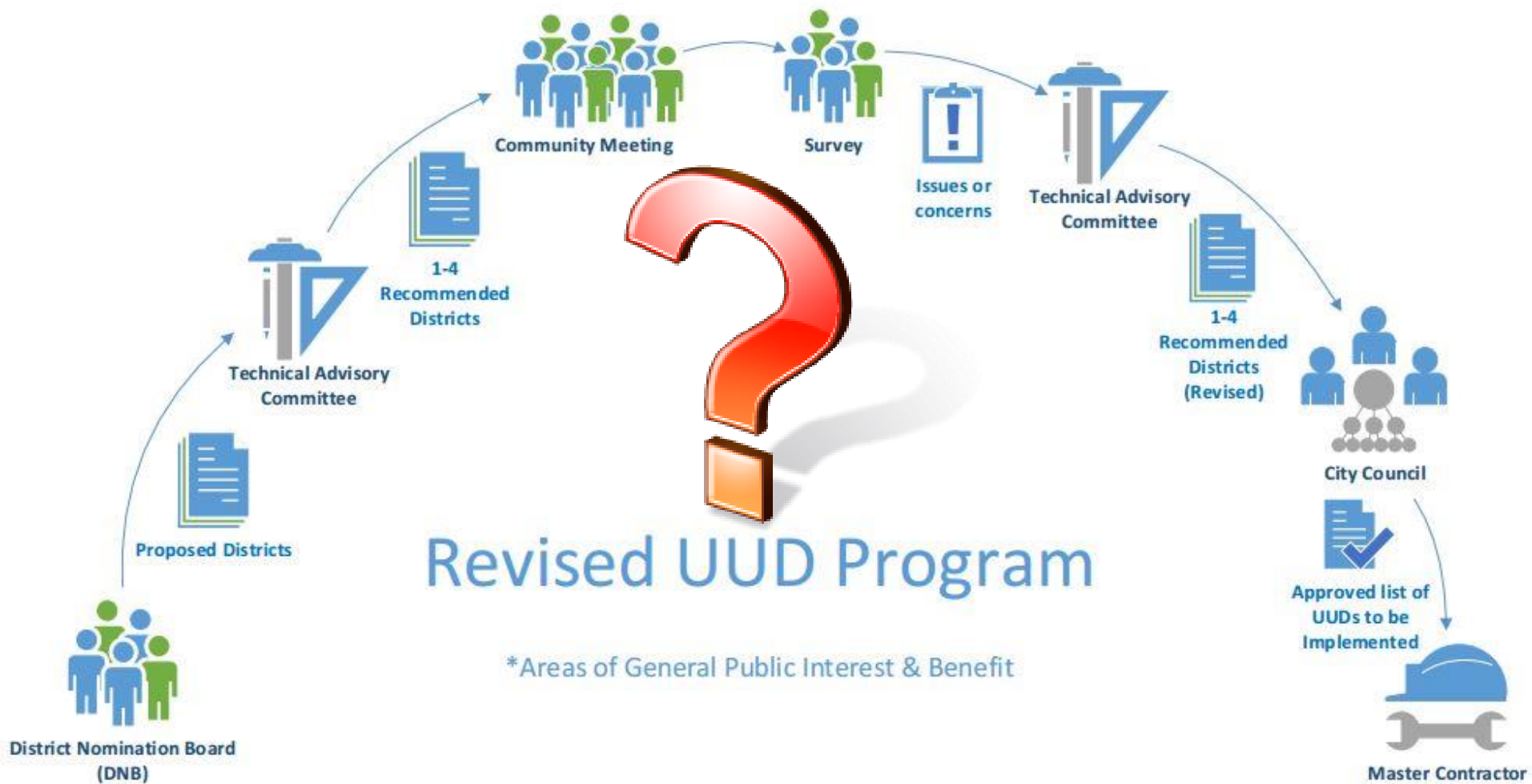
# UUD Process – Next Step



# UUD Notional Timeline



# Questions?



# Contact Information

Gary Spenik

[spenik@alamedamp.com](mailto:spenik@alamedamp.com)

(510) 814-6404

Alameda Municipal Power

2000 Grand Street, Alameda