

EXHIBIT “A”

City of Alameda
Chuck Corica Golf Complex
2017 Annual Plan Review

March 14, 2017

Corica Golf Annual Plan

2016 HIGHLIGHTS

North Golf Course –

Greens: Given the known infrastructure challenges and salt levels, the mild summer and cumulative effect of the maintenance practices and agronomic plan provided for good conditions across all greens- only minor turf plugging was required in the peak stress period of the season.

Fairways: Overplanting success was evident as turfgrass coverage on fairways was globally consistent. In addition, turf density and development on the green banks was much improved.

Replaced the undersized north pump station main irrigation filter (September 2016) to match production/delivery system.

Trees: 2016 total removals (dead or storm damaged) – 98 trees

MIF/Driving Range

Replaced weak turf out of play areas (mainly due to shade) under trees along Holes #1, #9, and practice area with mulch generated from tree debris collected on the property. This not only provides an aesthetic upgrade, but aids in management and deterring weed development.

Walkway pavers between select holes were not installed as planned due to increased maint. practices (solid tine aerification) & consistent water availability (new South Pump station & supply line completion) made moisture management feasible and improved turfgrass sustainability. Evaluation will continue to determine if a hardscape path is necessary.

Additional drainage and area specific irrigation was added to isolated areas on Driving Range to provide for more efficient management and operation.

Facilities/Operations:

- Installed energy efficient LED lights within Mechanics & Equipment Storage bays at Maint. Building.
- Upgraded Fuel Storage to latest compliance measures.
- Added recycling collection stations in strategic locations to evaluate patron participation.
- The large debris pile was removed and the area graded flat for future use/evaluation for staging for the North Course Renovation.
- Introduced GolfBoards to the property. Allows players to enjoy a fun ride in what is promoted as surfing the earth. Results were very positive. Over 1,200 board rentals since launched in mid-2016.

Corica Golf Annual Plan

2016 HIGHLIGHTS

2016 Rounds & Revenue Recap –

North Rounds	63,637
South Rounds*	n/a
Par-3 Rounds	17,455
Total Rounds	81,092
Total Facility Revenue	\$2,439,423

* South Course closed all of 2016

Corica Golf Annual Plan

2016 HIGHLIGHTS

South Course 2016 Recap -

- ✧ Dirt import 98% completed
- ✧ Bunkers 96% completed
- ✧ Cart paths 100% subgrade complete
- ✧ Storm drainage 100% complete
- ✧ Irrigation install 98% complete- hole #15 and native cart path exteriors remaining
- ✧ Irrigation install 98% complete- hole #15 and native cart path exteriors remaining



1st Tee of South

Corica Golf Annual Plan

2017 PREVIEW

North Course:

Close monitoring, continuation of cultural practices, and daily irrigation management will be the primary directives to prepare the turfgrass for the greatest potential to combat the infrastructure deficiencies that will be problematic in the high irrigation demand periods.

The high rainfall quantities in the winter months (late 2016/early 2017) and lack of drainage/topography has caused turf decline in the low areas present throughout the North Course. Frequency and volume of rain events offset removal/pumping measures and resulted in turf loss. Additional cultural practices and sprigging/seeding will be required in numerous locations to re-establish acceptable turf coverage.

Tree pruning & removal is planned to continue throughout the season.

Corica Golf Annual Plan

2017 PREVIEW

Critical Rainfall Amounts:

2015 December total: 15"

2016 Total: 25.71"

2017 Total (Jan- March 12th): 22.46"

(MIN: 34 days in 2017 year impacted by rain)

MIF 2017 Plans:

Forward & Larger Tees: The funds earmarked for additional and oversized tee pads were utilized as contingency to amend the South Storm Water infrastructure. Recent storm patterns clearly indicated the challenge of migrating the stormwater from off property through the property with the existing system. These tees will budgeted for in the future and likely be installed in the fall of 2017 when the South Course opens.

Standard practices will continue on MIF & Driving Range throughout 2017.

2017 Rounds & Revenue Projections -

North Rounds	57,000
South Rounds*	13,000
Mif Par-3 Rounds	18,000
*Total Rounds	88,000
Total Facility Revenue	\$3,000,000

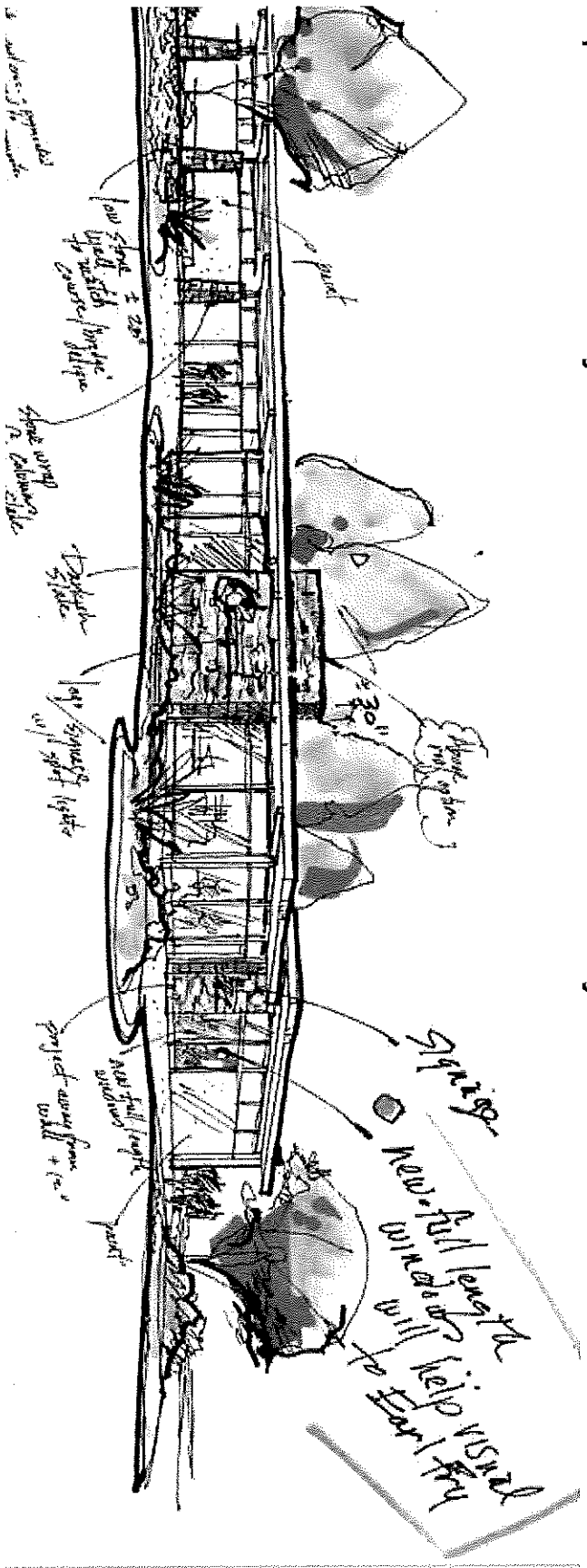
- Projections currently assume a mid-October south course reopening but are subject to change based on actual opening date. Rounds on North projection reflect rain impact in 1st Qtr. of year and the expected impacted on North play from opening of South Course in late 2017.

Corica Golf Annual Plan

2017 PREVIEW

Clubhouse Proposed Improvements: Clubhouse plans for 2017 consist of updating men's and women's restrooms and golf shop. Timelines to be determined.

Club Branding (Refresh): Design plans for refreshing club brand, logo, facility color schemes, signage, etc. are in development and will be presented in July 2017 for Golf Commission/City feedback.

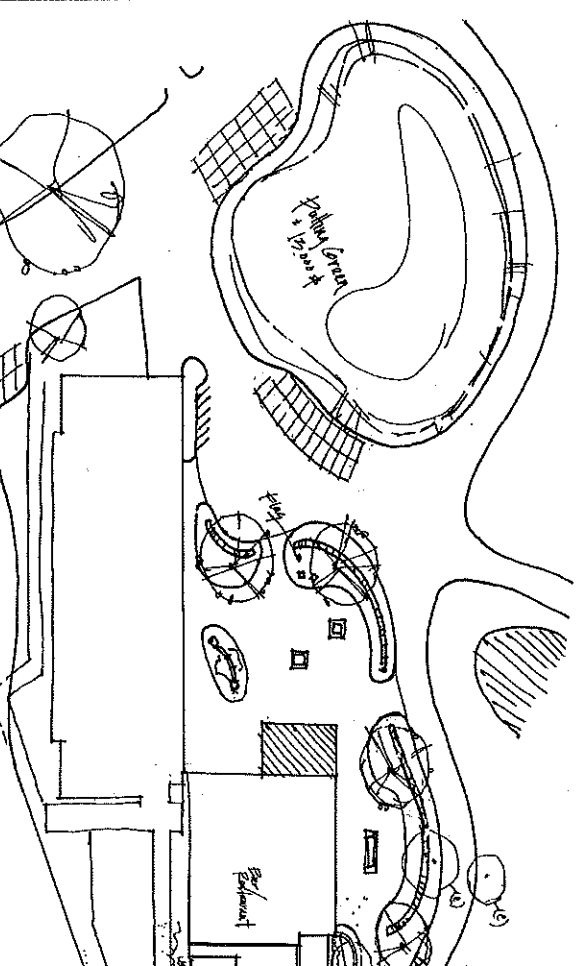


Corica Golf Annual Plan

2017 PREVIEW

New Putting Green: The existing two putting greens located near golf shop will be replaced with one larger bent grass putting green. Cart parking will be located on each side of green.

Social Patio: Area around shop, Jim's and clubhouse/existing patio will be resurfaced with stone pavers. A 2ft. stone wall matching the bridges on south will be placed to define area. Plans are to renovate the putting green and patio together, a firm date is not yet set due to rain delays on South.



- South Course Opening – In support of South opening in late 2017, efforts are focused on development of opening plans. This includes finalizing rates, membership programs, preview events, staffing plans, press releases, course amenity package and marketing and promotional campaigns. An opening plan with above info will be developed and will be further shared at the July & September golf commission meetings.
- South Course Golf Carts: In conjunction with opening of the south course, a new golf fleet will be put in place. The new fleet will be a premium color Yamaha golf cart with fold down windshields, sand bottles, GPS and onboard USB charging station for phones, etc. North fleet is currently on lease through May 2018.
- Fun Starts Now – Plans are underway to further focus on creating fun entertainment events around the club. This will include leagues and special theme events at Range and par 3 course.

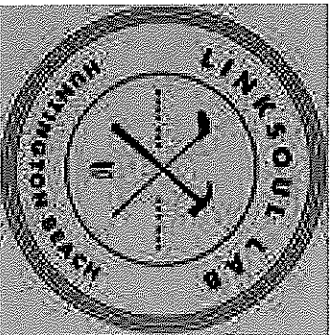
Corica Golf Annual Plan

2017 PREVIEW

Lifestyle Store - Greenway is developing plans to repurpose Golf Shop to a Lifestyle store. Plans are in development to form a unique partnership with LinkSoul, a retail company based in California, to form a **LinkSoul Lab Alameda**.



Founded by industry retail veteran John Ashworth of Ashworth Golf, the LinkSoul Lab will feature variety of golf and non golf merchandise and styles at various price points. Plans, once finalized and approved, include a full remodel and refresh of shop. Est. summer/fall.



“The word “linksoul” comes simply from the term “links soul”, which was an expression of the combination of virtues we found through playing golf... and now seek in whatever we do. Our mission is to reconnect people to the soul of the game.”

— John Ashworth



South Course Renovation -

Plans for 2017 include...

- Completion of import of dirt/sand capping
- Final Grading
- Cart path completion
- Grassing and grow-in

Timeline for Opening: South course work has been delayed due to significant rain totals from December 2016- March 2017 (27.48 inches recorded at course). However, much of the infrastructure work was completed prior to the rain and as a result the delay is not as severe as it could have been.

Expected opening date... The expected opening date will be set as grassing is completed but is expected to be October –December 2017.