

# OAKLAND INTERNATIONAL AIRPORT RUNWAY 12-30 REHABILITATION



JULY 5, 2017



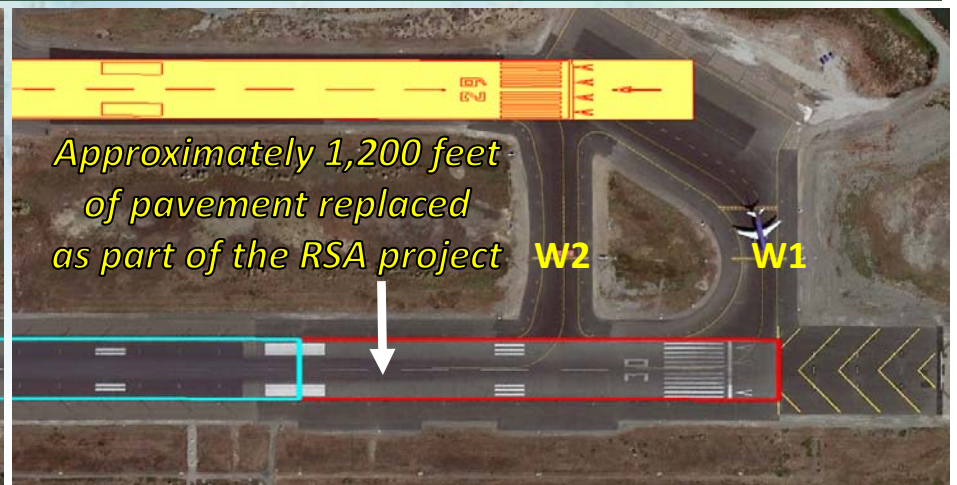
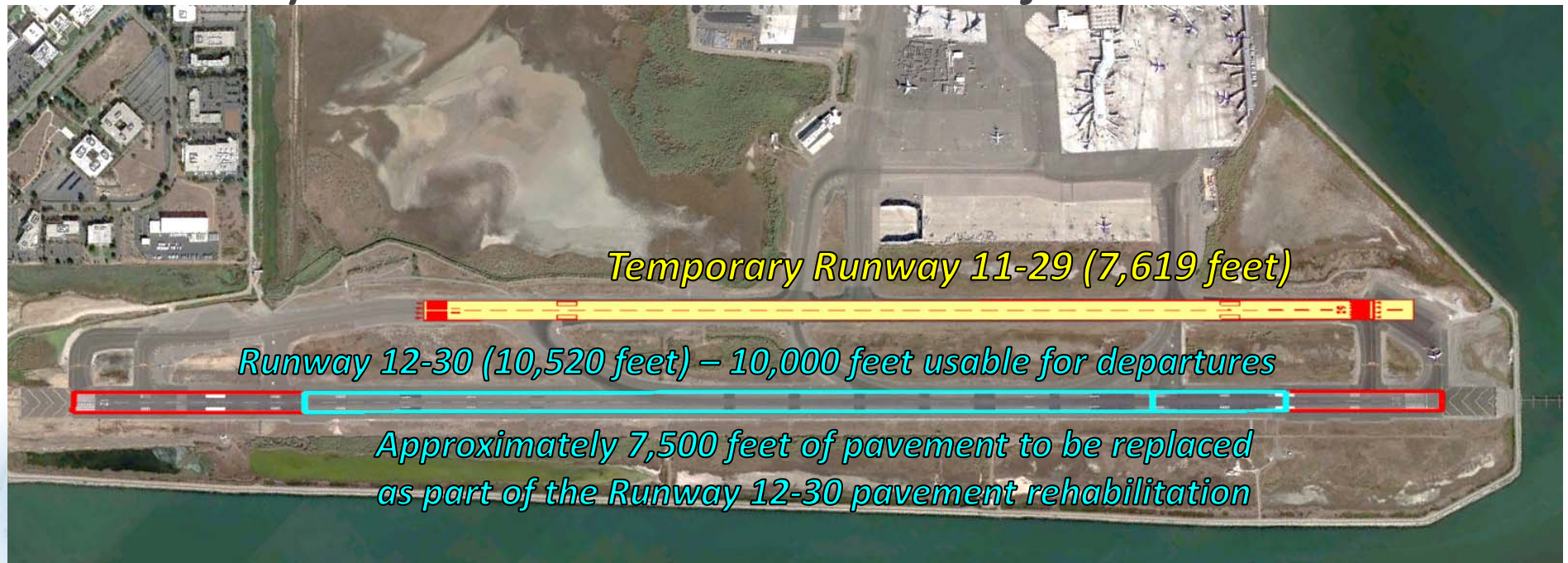
# Project Purpose and Need

- Full closure of Runway 12-30 for pavement rehabilitation was previously conducted in 2001
- The Port of Oakland performs periodic maintenance on the runway during Monday Morning Closure (MMC) periods
- Two week closure of Runway 12-30 for pavement rehabilitation provides the most efficient means of completing the construction, with minimal impacts to flight operations





# Runway 12-30 Rehabilitation Project



Note: South Field Runway Safety Area (RSA) project paving work was completed in 2014

## Project Overview (1 of 3)

- Planning and design efforts for project started in 2015, including coordination and outreach meetings with:
  - Air carrier operators
  - Air cargo operators
  - FAA lines of business
    - Air Traffic Control (ATC)
    - Airport District Office (ADO)
    - Air Traffic Organization (ATO)
- Community Outreach meeting held on February 16, 2017
- Follow-up scheduled presentations:
  - San Leandro City Council on June 19, 2017
  - Alameda City Council on July 5, 2017

## Project Overview (2 of 3)

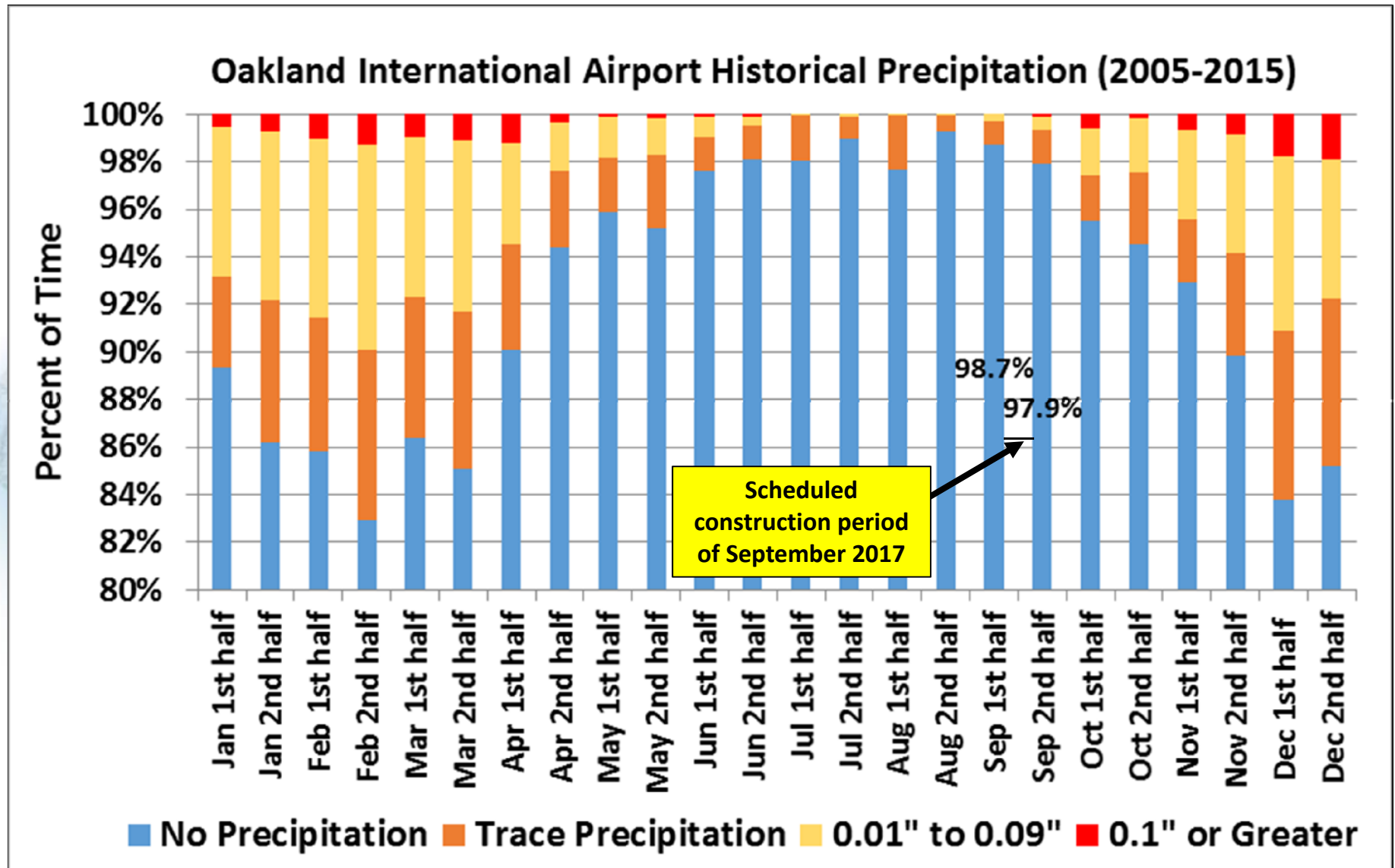
- In 2001, Parallel Taxiway W Alternative was used as a temporary runway
- Runway construction scheduled for 14 days
  - Temporary runway will be used for departures by commercial aircraft and air cargo carriers
  - Some air carriers will use North Field for arrivals



## Project Overview (3 of 3)

- A majority of the work to convert Taxiway W to temporary Runway 11-29 will occur during Monday morning maintenance closures.
- Using Taxiway W as temporary Runway 11-29 during Runway 12-30 Rehabilitation project provides:
  - Full closure of Runway 12-30 for two weeks for pavement rehabilitation
  - A runway to serve primarily departures with some arrivals
  - Opportunity to construct Runway 12-30 without interruption, which reduces cost
  - An airfield operation that is similar to existing conditions, which reduces complexity for Air Traffic Control and pilots

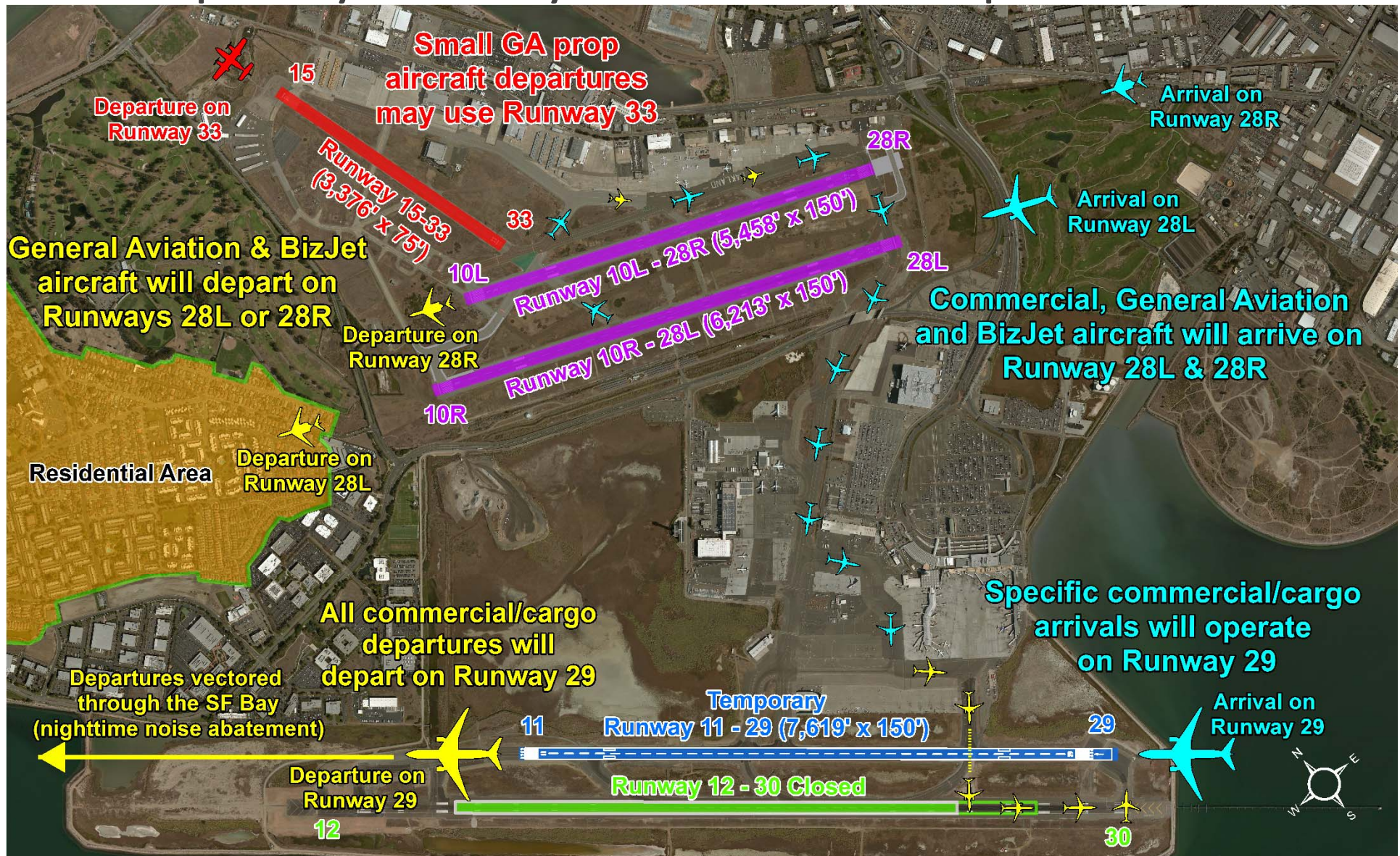
# Historical Weather Conditions (Precipitation)



Note: Historical precipitation data captured from 2005-2015



# Temporary Runway 11-29 Airfield Operation





# Summer 2017 Forecast Aircraft Operations

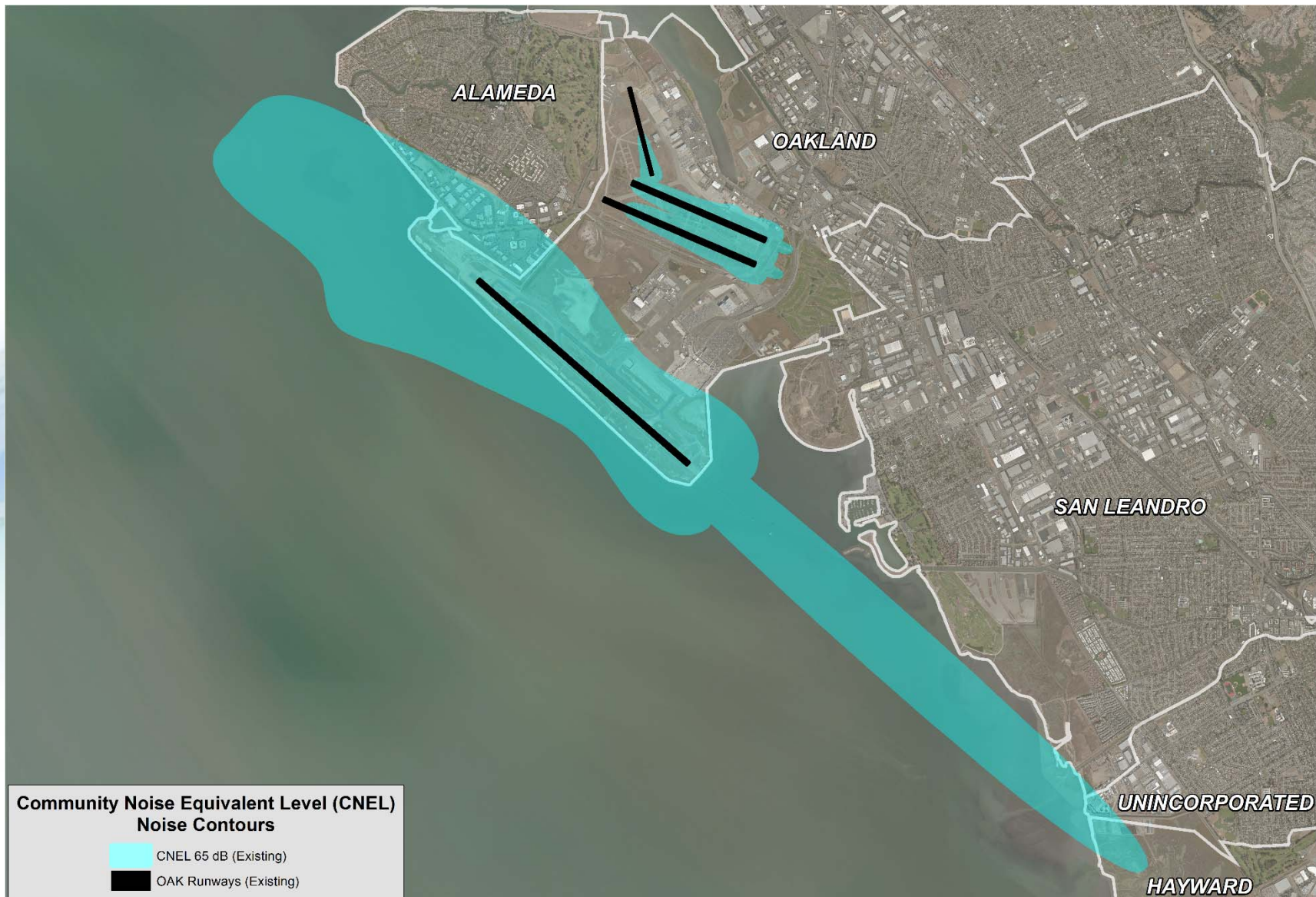
<b>OAK Forecast Arrival and Departure Operations in Summer 2017</b>		
	<b>NORTH FIELD</b>	<b>SOUTH FIELD</b>
<b>EXISTING AIRFIELD</b>	28%	72%
<b>AIRFIELD DURING CONSTRUCTION</b>	50%	50%

<b>Temporary Runway 11-29 Airfield Operation Runway Use</b>					
	<b>NORTH FIELD</b>		<b>SOUTH FIELD</b>		<b>TOTAL OPS</b>
<b>AIRCRAFT CATEGORY</b>	<b>ARRIVALS</b>	<b>DEPARTURES</b>	<b>ARRIVALS</b>	<b>DEPARTURES</b>	
<b>HEAVY JET</b>			37	35	<b>72</b>
<b>COMMERCIAL JET</b>	108		67	175	<b>350</b>
<b>BUSINESS JET</b>	31	32			<b>63</b>
<b>TWIN PROP</b>	74	69			<b>143</b>
<b>TOTAL OPERATIONS</b>	<b>213</b>	<b>101</b>	<b>104</b>	<b>210</b>	<b>628</b>
	<b>314</b>		<b>314</b>		<b>628</b>

\* An estimated 45 arrivals are required to land on temporary Runway 11-29 due to runway length/operational restrictions on North Field. Up to an additional 59 arrivals may be offloaded from North Field to temporary Runway 11-29 when departure demand is low on this runway.



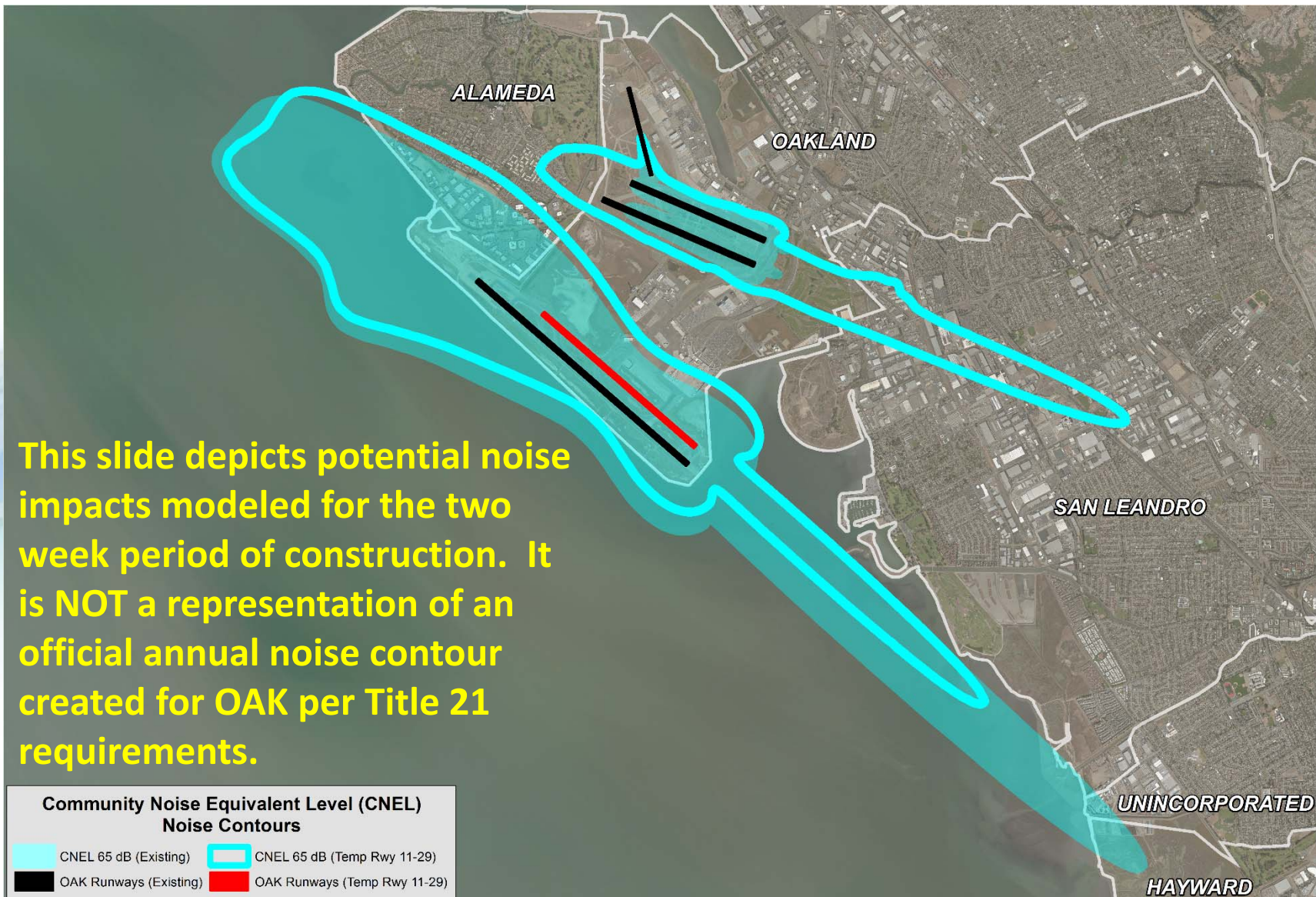
# Aviation Noise (2017 Existing Runway Use)



Note: Noise contours generated from 628 daily operations (Summer 2017 forecast activity levels)



# Aviation Noise (Two-Week Construction Closure)



Note: Noise contours generated from 628 daily operations (Summer 2017 forecast activity levels)

## Construction Haul Routes (Off-Airport)

- Contractor truck traffic on the landside of the Airport will be minimized as a result of the two week construction period
  - 98th Avenue has been identified as a preferred route
  - All construction traffic to be routed via the freeway
  - Contractors required to use the freeway for material hauling and not travel through residential/business areas of Alameda
- Asphalt grindings will be recycled onsite, thereby minimizing truck trips and emissions



# Thank You!



## Contact Us

Hugh Johnson  
510-627-1449  
[hjohnson@portofoakland.com](mailto:hjohnson@portofoakland.com)

Tom Cornell  
415-307-2202  
[tcornell@landrum-brown.com](mailto:tcornell@landrum-brown.com)

James Terry  
510-220-6612  
[jterry@landrum-brown.com](mailto:jterry@landrum-brown.com)

