

## Welcome/Introductory Remarks

### Love Our Green Island Town Hall Meeting



Source: Bay Area News Group

1

LOVE OUR GREEN ISLAND

## Agenda

- Welcome
- Introductory Remarks
- Overview of Plan (2008)
- Plan Progress (2015)
- **Plan Update (2017)**
- Break-out Groups
- Next Steps



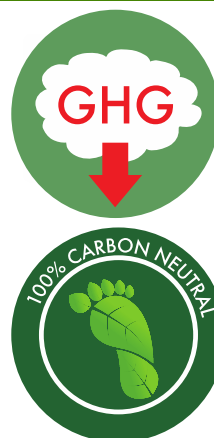
Source: The Synergy Centre

2

LOVE OUR GREEN ISLAND

## Meeting Purpose

- ✓ Inform community members
- ✓ Brainstorm on how to move forward with the Climate Plan Update



3

LOVE OUR GREEN ISLAND

## Overview – Climate Plan (2008)



LOCAL ACTION PLAN FOR  
CLIMATE PROTECTION

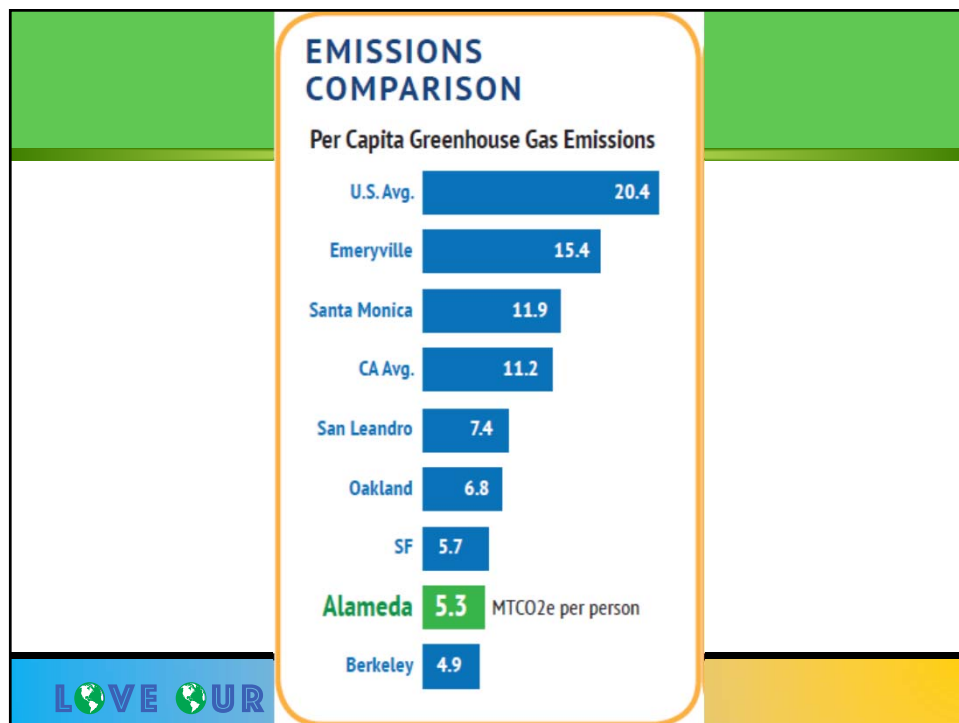
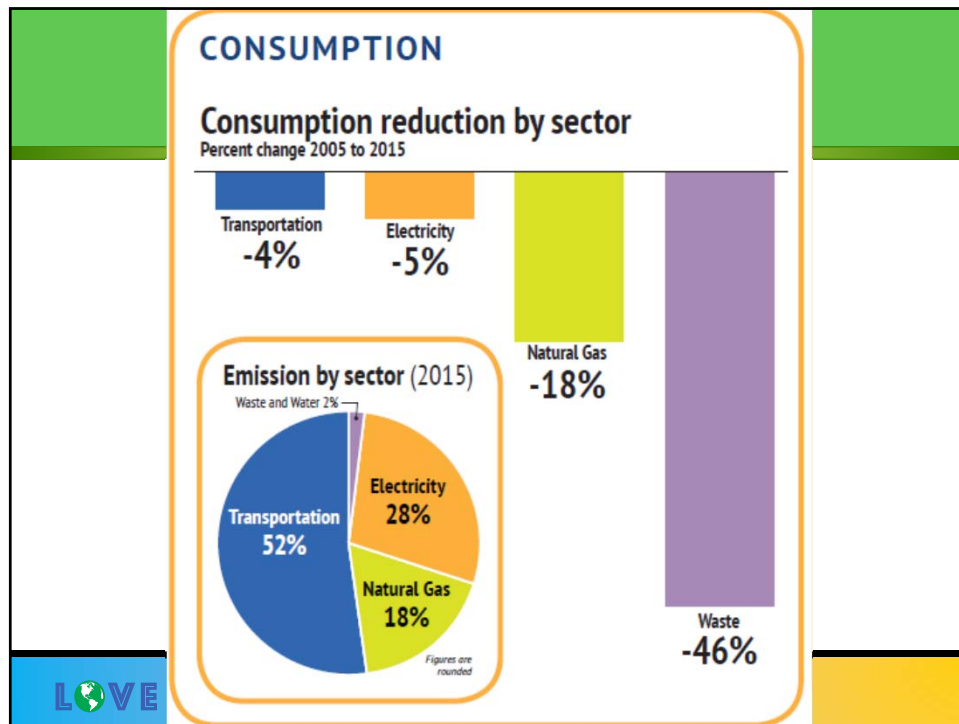
**GOAL:** Reduce  
GHG emissions to  
25% below 2005  
baseline by 2020

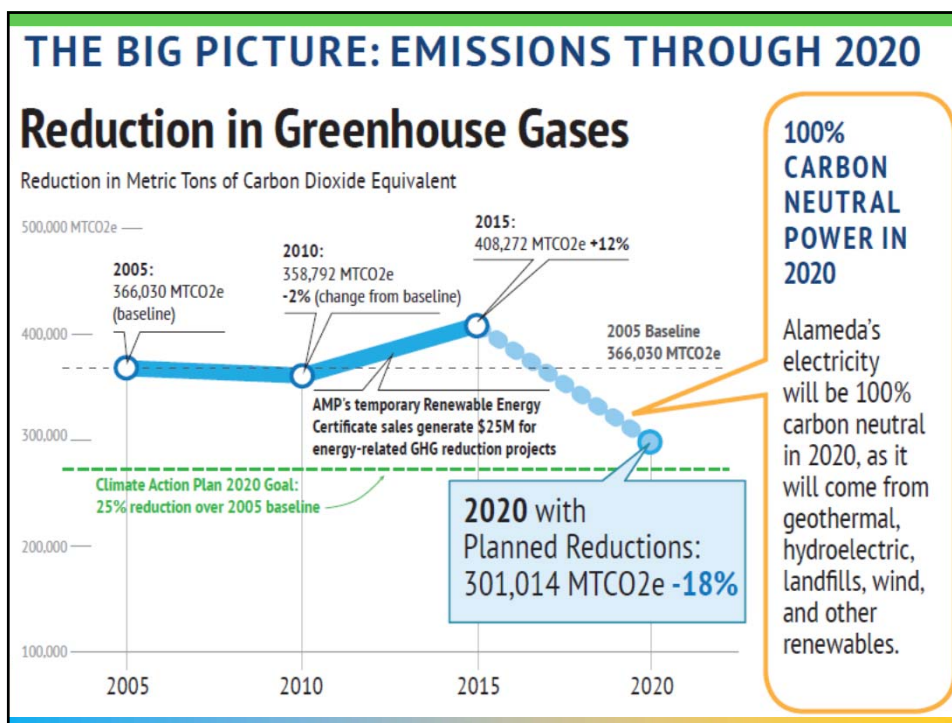
Initiatives for:

- ✓ Transportation and Land Use
- ✓ Energy
- ✓ Water and Recycling
- ✓ Outreach and Education

4

LOVE OUR GREEN ISLAND





## Spring/Summer 2017 Actions

- City Council Direction
  - Update Alameda's 2008 Climate Plan
  - Create a "Straws on Request" and compostable or recyclable "To Go" food ware ordinance
- Town Hall Meeting
  - Focused on accomplishments
  - 40 attendees
- Convened Green Team
- Emissions Inventory Update
- Resilient by Design Challenge Submittal
- Hired Climate Action Fellow



## Plan Update Inputs

Source	Input	Date
Transportation	Transportation Choices Plan	Fall 2017
Natural Gas	Pacific Gas & Electric (PG&E)	Update: 2019
Electricity	Alameda Municipal Power (AMP)	Update: 2019
Waste	Zero Waste Plan	Dec 2017
Stormwater	Green Infrastructure Plan	Spring 2018
Land Use	Community Development Dept.	Update: 2019



Climate Action Plan Update (2019)

LOVE OUR GREEN ISLAND

## Transportation

- Draft Transportation Choices Plan
  - 18 month process – began in 2015
  - 38 Projects and Programs
  - City Council: Fall 2017
  - **Vision:**
    - Sustain a high quality of life in Alameda by improving mobility over the next 15 years



Source: East Bay Times



10

LOVE OUR GREEN ISLAND

## Transportation

### Goals:

1. **Estuary crossings: Decrease drive alone trips at estuary crossings, especially in the peak period.**
  - = 1,700 fewer drive alone trips in AM peak hour
  - = 12% decrease in drive alone trips
  - (High Estimate: 2,500 fewer drive alone; 17%)
2. **Within Alameda: Increase the share of walking, bicycling, bus and carpool trips within Alameda.**
  - = 3,300 more non-drive alone trips on weekdays
  - = 14% increase in non-drive alone trips

Figure 1: AM Peak Hour Estuary Crossings Mode Share Target

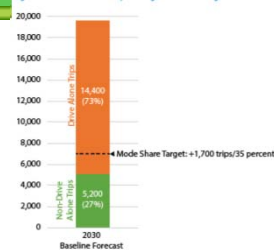
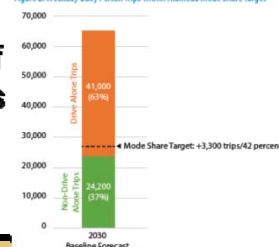


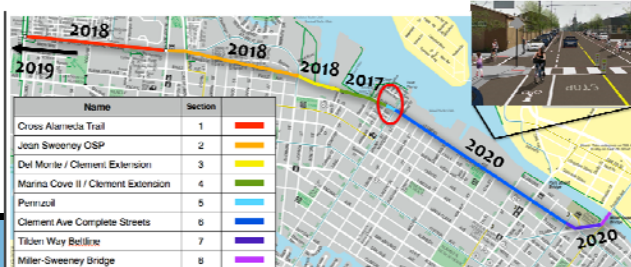
Figure 2: Weekday Daily Person Trips within Alameda Mode Share Target



LOVE OUR GREEN ISLAND

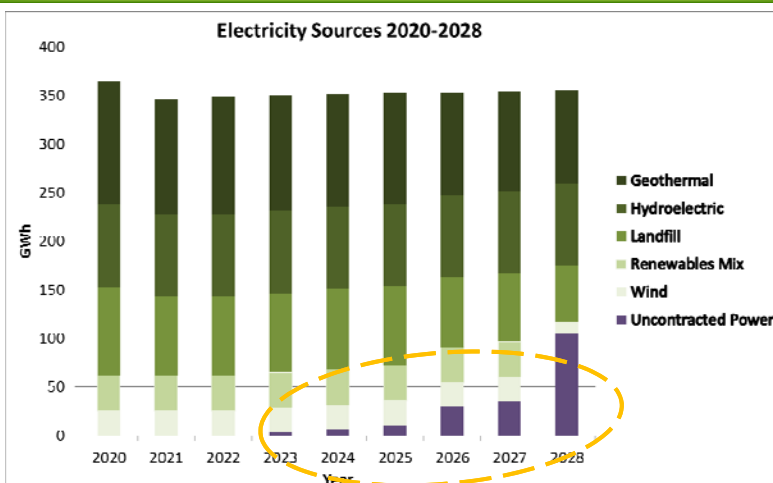
## Transportation

- Draft Transportation Choices Plan (cont.)
  - Estimated 2.7% to 6.6% annual CO2 emissions reduction
  - Funded projects = \$61 million
  - Climate Plan Update
    - Electric vehicles
    - New technologies – green economy
    - Other?



LOVE OUR

## AMP Meets 2020 Carbon Neutral Goal



LOVE OUR GREEN ISLAND

## Energy Efficiency and Electric Vehicles

- AMP will continue to use REC funds to offer energy efficiency incentives
- Evaluating a Community Solar Program
- Proposing an EV charger rebate program
  - Funded by Low Carbon Fuel Standard



14

LOVE OUR GREEN ISLAND

## Waste

- Zero Waste Implementation Plan Update on Dec 5 to City Council

### Short term

- Outreach and education: Reusables vs. Disposables
- Update the construction and demolition debris ordinance
- Mandatory residential recycling and composting?

### Medium term

- Support landfill bans on specific materials?
- Food rescue program?
- Mixed waste processing?
- Regulate more single-use products?

- Input: see Kerry Parker and consultant team
- Follow up survey



15

LOVE OUR GREEN ISLAND

## Land Use & Green Buildings

- Land Use Questions

### — Density

- City Charter and “Measure A”
- Public Attitudes
- State Actions to Address Housing Crisis
  - Accessory Dwelling Units

### — Development Guidelines

- Incentives vs. Requirements
- Public Outreach Programs



16

LOVE OUR GREEN ISLAND



## Land Use & Green Buildings

- Green Buildings & Development
  - California Green Building Code
    - Requirements for New Development
      - New Residential Units Be Net-Zero Energy
      - Non-Residential Development Net-Zero Energy in 2020
    - Does the City Want Stricter Requirements than State?
      - Mandatory EV Charging Stations
      - Retrofitting of older homes
  - WELO & Bay Friendly
    - New and Refurbished Landscaping
      - Water Efficient & Drought Tolerant
      - Non Invasive Local Species
      - Reduction in Waste to Landfill



17

LOVE OUR GREEN ISLAND



## PG&E Actions to Reduce GHG Emissions

*PG&E is taking a number of steps to reduce the GHG emissions associated with our natural gas system, while maintaining safety and reliability*

- **Leak detection and repair**
  - We've pioneered new technologies to detect and reduce leaks
  - We use the Picarro Surveyor™, which is 1,000 times more sensitive than any other leak detection device
- **PG&E as a climate solutions provider**
  - We offer a wide array of energy efficiency options for customers
- **Decarbonizing the natural gas system**
  - We support the development of a robust renewable natural gas market in California and beyond, and are actively exploring and advancing opportunities in this area
  - It is critical that we have the right policies and regulatory framework in place to develop this market



18

LOVE OUR GREEN ISLAND

## PG&E's Climate Resilience Initiatives

**Building more resilient operations**

- Vulnerability assessments and visualization maps to explore climate risk
- Risk Assessment Mitigation Phase (RAMP) filing with CPUC
- Climate Resilience Screening Tool in development to assess risks for large infrastructure projects

**Supporting our communities**

- Better Together Resilient Communities Grant Program: \$1 million over five years in grants to support local initiatives to build greater climate resilience

**ART Partners**

ABAG  
Alameda County  
Public Works  
Community Development  
Public Health Department  
Transportation Commission  
BART  
Bay Institute  
Bay Trail  
CA Coastal Conservancy  
Capital Corridor JPA  
City of Alameda  
City of Emeryville  
City of Hayward  
City of Oakland  
City of San Leandro  
City of Union City

East Bay Dischargers Authority  
East Bay Municipal Utility District  
East Bay Regional Park District  
H.A.R.D.  
Pacific Institute  
PG&E  
Port of Oakland  
San Francisco Estuary Institute  
San Francisco Estuary Partnership

- Guide PG&E action** to reduce climate risk for the company, our employees, and our customers
- Improve understanding of **potential risk to assets** (e.g., from sea level rise and storm surge)
- Aid in **communicating risk & resilience strategies** across the company and with local stakeholders
- Inform **system-wide management** of climate change resilience planning
- Explore **interactions across climate hazards**, such as a prolonged heat wave in conjunction with extended drought

## Potential Other Plan Components

- **Community Actions (CASA)**
  - Formed in 2008 to help implement the City's Action Plan for Climate Protection
  - Building a constituency
  - Engaging the community
  - Supporting community buy-in and change



## Potential Other Components (cont.)

- Sustainability
  - "Sustainable development is development that meets the needs of the present without compromising the ability of future generations to meet their own needs."
    - Brundtland Commission, October 1987
- Regeneration
  - Describes processes that restore, renew or revitalize their own sources of energy and materials, creating sustainable systems that integrate the needs of society with the integrity of nature.



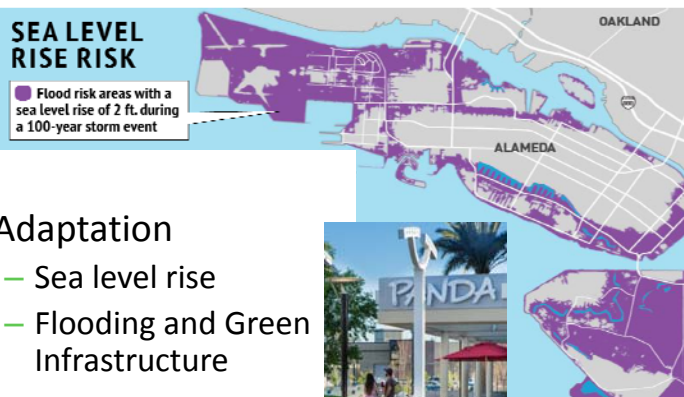
21

LOVE OUR GREEN ISLAND

## Potential Other Components (cont.)

### SEA LEVEL RISE RISK

■ Flood risk areas with a sea level rise of 2 ft. during a 100-year storm event



- Adaptation
  - Sea level rise
  - Flooding and Green Infrastructure



LOVE OUR GREEN ISLAND

## Input for Plan Update

2017 Date	Task
September/ October	Publicize survey ( <a href="https://www.peakdemocracy.com/5414">https://www.peakdemocracy.com/5414</a> )
October	Complete 2015 Inventory Report Town Hall (Oct 5), Planning Board (Oct 23)
November	Public Utilities Board (Nov 13), Transportation Commission (Nov 15) Transportation Choices Plan to City Council (Nov 7)
December 5	Request City Council to approve draft work scope and budget of Climate Plan Update Discuss Zero Waste Plan update

LOVE OUR GREEN ISLAND

## Draft 2018/2019 Work Plan

Date	Task
Early 2018	Hire consultant experts after issuing a Request for Proposals (pending City Council approval)
Mid 2018	Conduct workshop/survey and draft initiatives
Early 2019	Complete Draft Plan Update and outreach
Mid 2019	Request City Council approval of Plan

24

LOVE OUR GREEN ISLAND

## Q & A

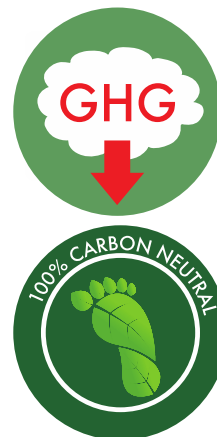


25

LOVE OUR GREEN ISLAND

## Meeting Purpose

- ✓ Inform community members
- ✓ Brainstorm on how to move forward with the Climate Plan Update



26

LOVE OUR GREEN ISLAND

## Break-out Groups

- Adaptation (Liam)
- Electricity (Kelly/James)
- Land Use & Green Building (David)
- Natural Gas (PG & E)
- Regeneration & Sustainability (CASA)
- Transportation (Gail)
- Zero Waste (Kerry)

“When one tugs at a single thing in nature, he finds it attached to the rest of the world”

~ John Muir

27

LOVE OUR GREEN ISLAND

## Next Steps – Plan Update

- Take web survey:  
<https://www.peakdemocracy.com/5414>
- Take November web survey on Zero Waste
- Commissions/Boards/City Council on work scope update
  - Planning Board: Oct 23
  - Public Utilities Board: Nov 13
  - Transportation Commission: Nov 15
  - City Council: Dec 5



28

LOVE OUR GREEN ISLAND