



Replacement Window

Exhibit 5
Item 7-A, 3/7/19
Historical Advisory Board
April 6, 2017 – Hi.

Advisory Board

Tim Lee
COMMUNITES

Ve
HISTORIC PRESERVATION CONSULTING

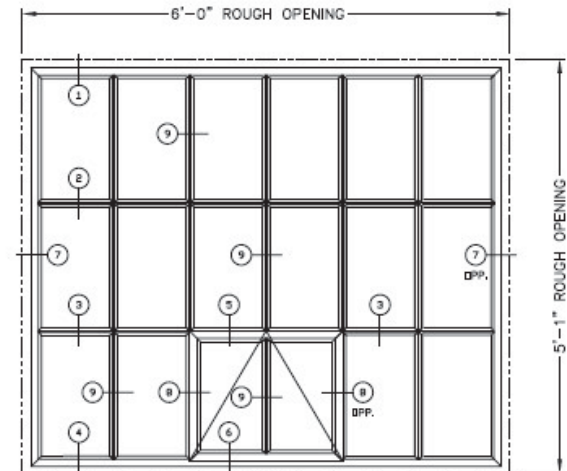
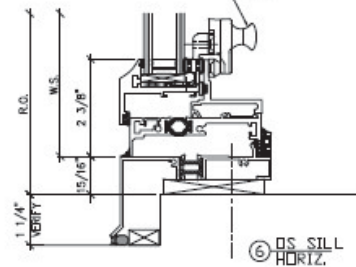
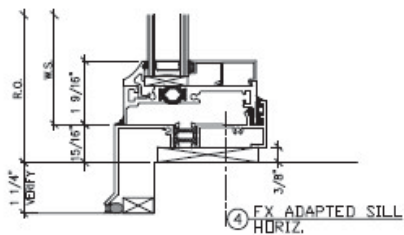
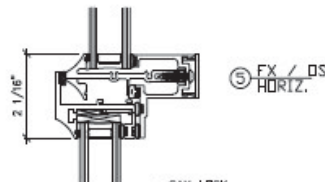
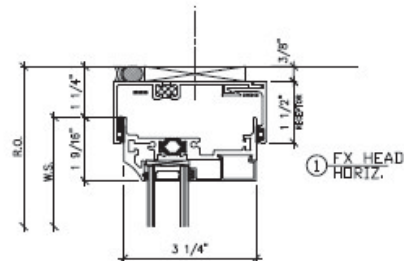
BARARCHITECTS

Stacked flats replacement

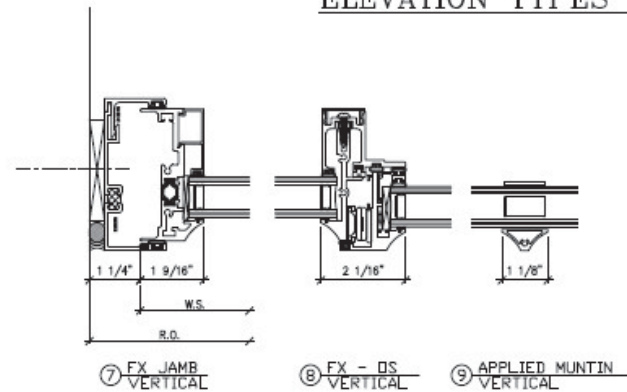
ALAMEDA REPLACEMENT PROJECT – WAREHOUSE 48

Graham Architectural Products – SR6700 Series Window

SURROUNDING STRUCTURAL
CONDITIONS TO BE
VERIFIED IN FIELD



ELEVATION TYPES "W2" & "W3"



DWG. 01B
Page 1 of 3,
rev., 12-08-2016

April 6, 2017 – Historical Advisory Board

Tim Lewis
COMMUNITIES

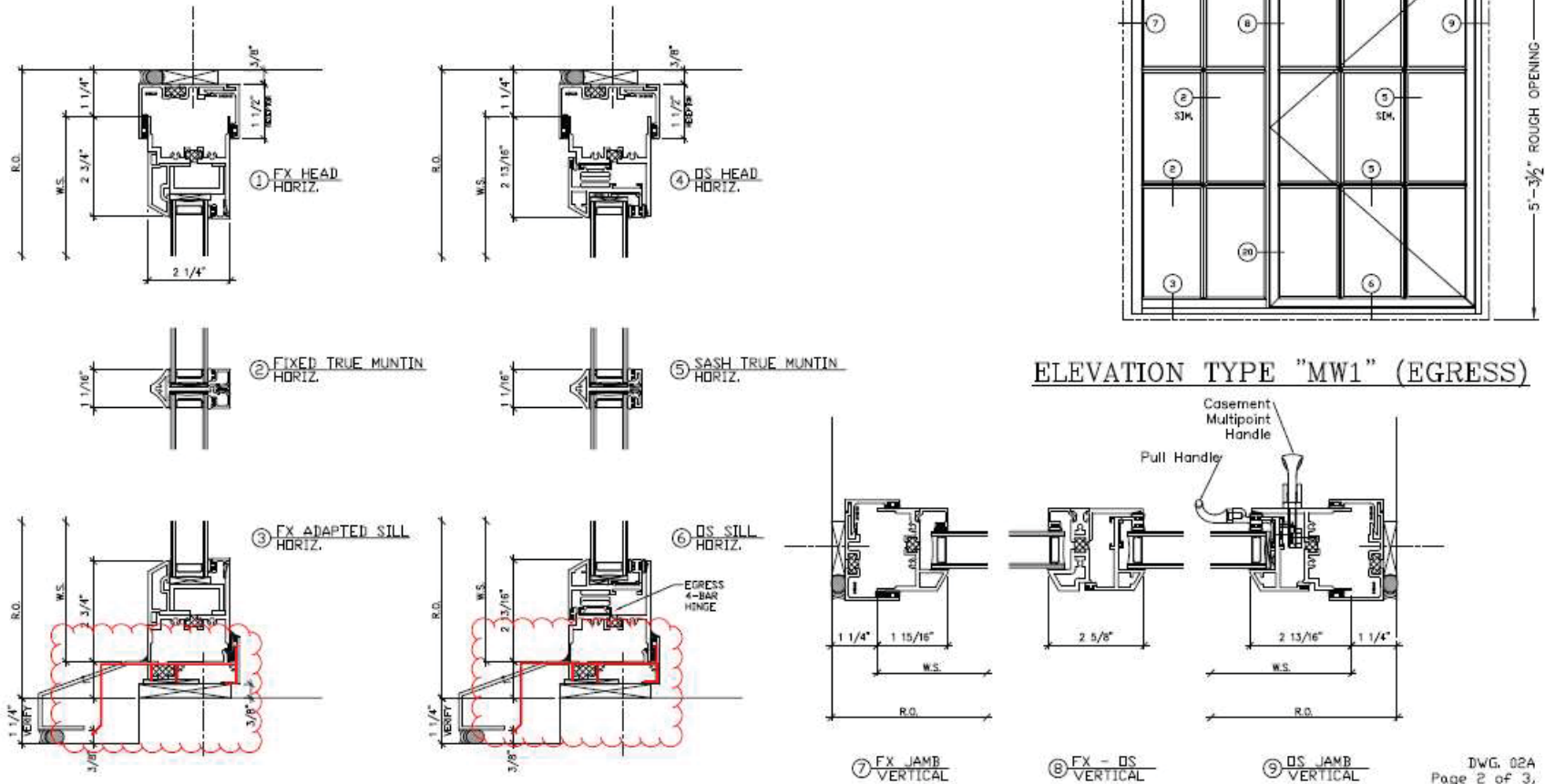
VerPlanck
HISTORIC PRESERVATION CONSULTING

BARARCHITECTS

Monitor Replacement 1 (Egress)

ALAMEDA REPLACEMENT PROJECT – WAREHOUSE 48

Graham Architectural Products – 6700 Series Window



DWG. 02A
Page 2 of 3,
12-08-2016

April 6, 2017 – Historical Advisory Board

Tim Lewis
COMMUNITIES

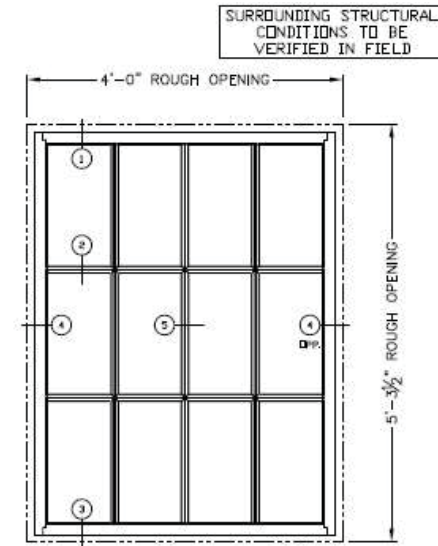
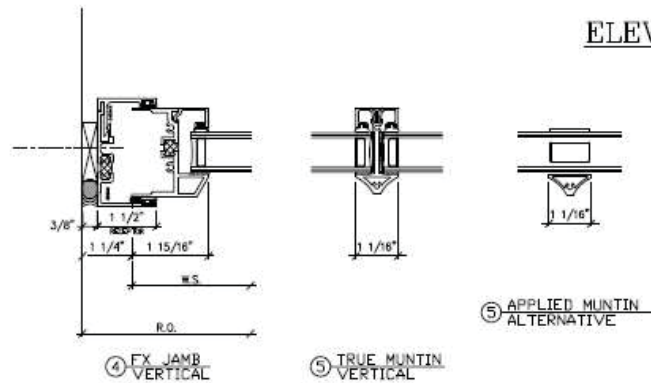
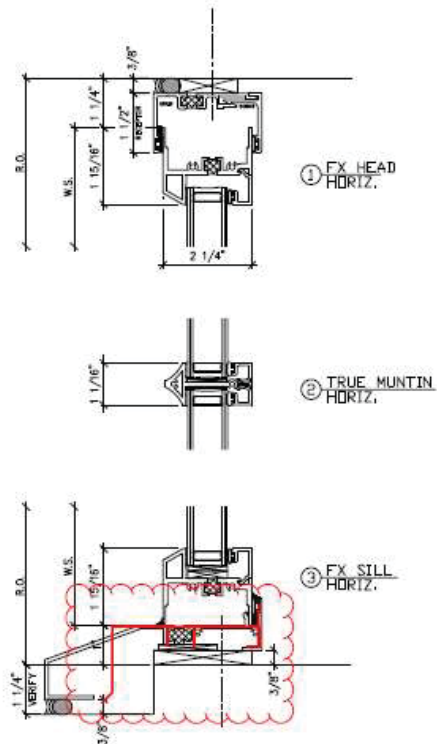
VerPlanck
HISTORIC PRESERVATION CONSULTING

BARARCHITECTS

Monitor Replacement 2 (Fixed)

ALAMEDA REPLACEMENT PROJECT – WAREHOUSE 48

Graham Architectural Products – 6700 Series Window



ELEVATION TYPE "MW1" (FIXED)

DWG. 03A
Page 3 of 3,
12-08-2016