

AREA SUMMARY TABLE		
PARCEL/LOT	AREA BEFORE	AREA AFTER
PARCEL A	40.866 AC.±	45.102 AC.±
PARCEL B	5.194 AC.±	0.958 AC.±
TOTAL	46.060 AC.±	46.060 AC.±

PARCEL OR LOT	APN#	ADDRESS
PARCEL A	0074-1200-002-03	2340 OTIS DR
PARCEL A	0074-1200-002-15	2375 SHORE LINE DR
PARCEL A	0074-1200-002-16	325 PARK ST
PARCEL A	0074-1200-002-17	2245 SHORE LINE DR
PARCEL A	0074-1200-002-18	501, 521, 2117, 2125 S. SHORE CENTER
PARCEL A	0074-1200-002-19	2216 OTIS DR
PARCEL A	0074-1200-002-20	2270 OTIS DR
PARCEL A	0074-1200-002-22	2130 OTIS DR
PARCEL A	0074-1200-002-25	2351 OTIS DR
PARCEL A	0074-1200-002-27	2201, 2205, 2251, 2253 S. SHORE CENTER
PARCEL A	0074-1200-005-01	N/A ACCESS ROAD
PARCEL A	0074-1200-029-04	2160 OTIS DR
PARCEL A	0074-1200-029-05	300-419, 2202-2314 S. SHORE CENTER
PARCEL B	0074-1200-029-05	2130 & 2140 S. SHORE CENTER
2-9	0074-1200-002-09	2201 SHORE LINE DR
7-2	0074-1200-007-02	430 WILLOW ST
8-1	0074-1200-008-01	2211 WHITEHALL PL
8-3	0074-1200-008-03	N/A ACCESS ROAD
8-9	0074-1200-008-09	2116 OTIS DR
25	0074-1200-025	2233 SHORE LINE DR
27	0074-1200-027	2234 OTIS DR
28	0074-1200-028	2250 OTIS DR
29-2	0074-1200-029-02	2239 SHORE LINE DR
31	0074-1200-031	2218 OTIS DR
32	0074-1200-032	2200 OTIS DR
1201	BOOK 74, PAGE 1201	2101 SHORE LINE DR

LOT LINE ADJUSTMENT MAP		
COMMON LINES OF PARCEL 1 & PARCEL 2 PER O.R. 2011005614, ALAMEDA, CA		
FOR: JAMESTOWN SOUTH SHORE CENTER, L.P.		
PREPARED BY BKF ENGINEERS, SAN JOSE, CA		
DRAWN: CASC		APPROVED: JVK, L.S. No. 8883
DATE: 02-05-19	SCALE: 1"=250'	SHEET 1 OF 8
PLANNING DIRECTOR		CITY ENGINEER
DATE		DATE

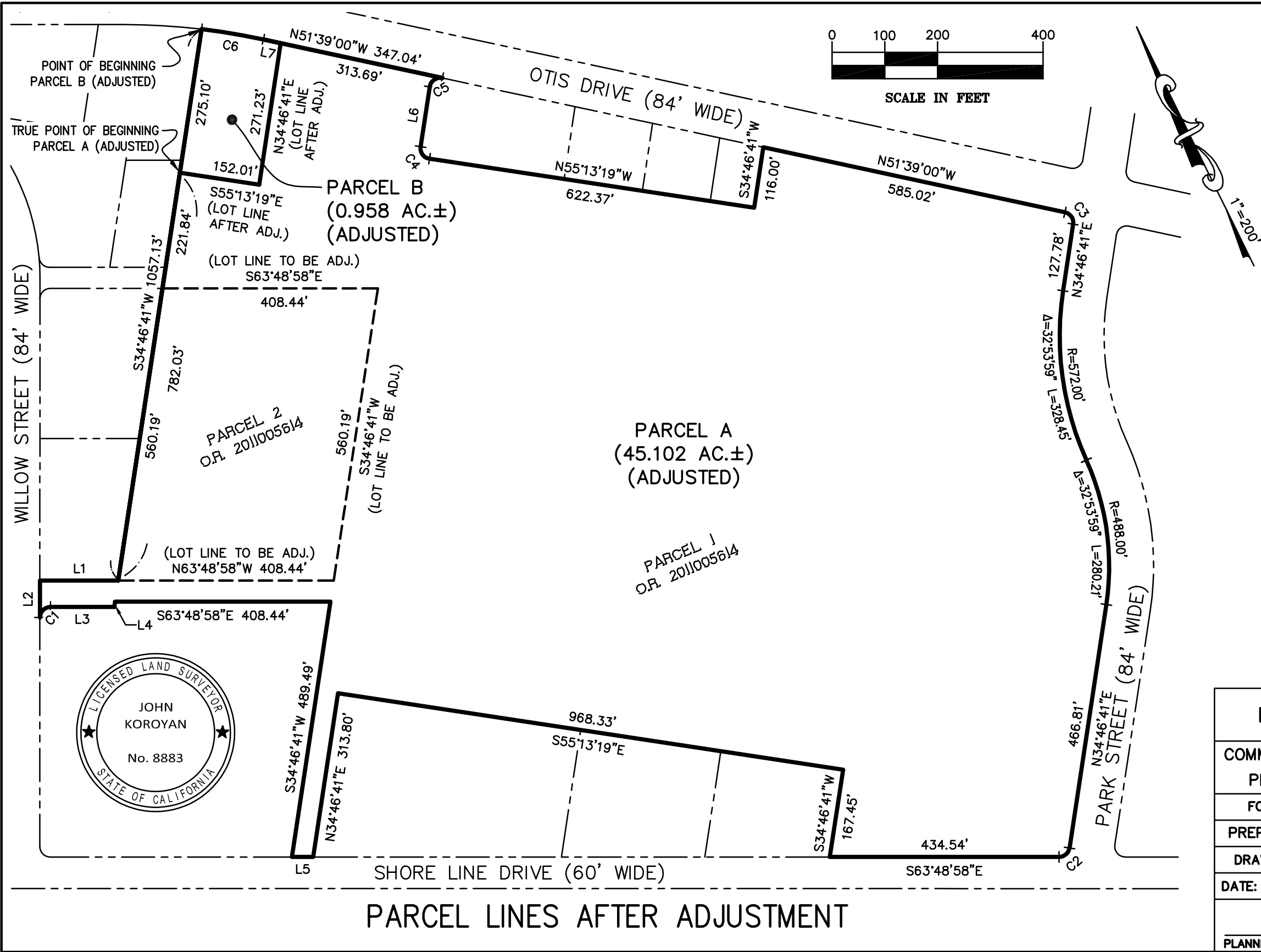


EXHIBIT "A"

LINE TABLE		
NO.	DIRECTION	LENGTH
L1	N63°48'58"W	148.49'
L2	S26°11'02"W	70.00'
L3	N63°48'58"W	120.93'
L4	N34°46'41"E	10.11'
L5	S63°48'58"E	40.45'
L6	N34°46'41"E	114.81'
L7	N51°39'00"W	33.35'

CURVE TABLE			
NO.	RADIUS	DELTA	LENGTH
C1	20.00'	90°00'00"	31.42'
C2	20.00'	81°24'21"	28.42'
C3	20.00'	86°25'41"	30.17'
C4	20.00'	90°00'00"	31.42'
C5	20.00'	93°34'19"	32.66'
C6	1258.00'	5°24'36"	118.78'

- LEGEND
- NEW LOT LINE
  - OLD LOT LINE
  - ADJACENT LOT LINES
  - O.R. OFFICIAL RECORDS

LOT LINE ADJUSTMENT MAP		
COMMON LINES OF PARCEL 1 & PARCEL 2 PER O.R. 2011005614, ALAMEDA, CA		
FOR: JAMESTOWN SOUTH SHORE CENTER, L.P.		
PREPARED BY BKF ENGINEERS, SAN JOSE, CA		
DRAWN: CASC		APPROVED: JVK, L.S. No. 8883
DATE: 02-05-19	SCALE: 1"=200'	SHEET 2 OF 8
PLANNING DIRECTOR	DATE	CITY ENGINEER DATE

EXHIBIT "A"

20. Easements for public utilities, drainage, sewers and ingress and egress offered for dedication and/or shown on the following maps:  
a) Map of Tract 1866 filed October 30, 1957, in Book 38 of Maps, Page 50;  
  
Portion of easement relinquished by Quitclaim Deed recorded March 30, 2006, Series No. 2006123384, Official Records;  
  
The effect of a Quitclaim Deed vacating a portion of said easement by the City of Alameda, recorded November 30, 2010, Instrument No. 2010352134, of Official Records;  
  
The effect of a Quitclaim Deed vacating a portion of said easement by the City of Alameda, recorded January 6, 2011, Series No. 2011005611, of Official Records.

b) Record of Survey filed August 3, 1961, Book 4 of Licensed Surveys, Page 21;  
c) Property Division Map of Parcel 2D filed October 24, 1962, in Book 47 of Maps, Page 4;  
d) Property Division Map of Lot 2A, filed September 19, 1963, in Book 47 of Maps, Page 11;  
e) Property Division Map No. 116, Parcel 2D1, filed June 18, 1964, in Book 47 of Maps, Page 33;  
f) Parcel Map 567, filed May 21, 1970, in Book 64 of Maps, Page 34;  
g) Parcel Map 761 filed February 19, 1972, in Book 72 of Maps, Page 62;  
h) Parcel Map 1907 filed July 8, 1976, in Book 91 of Maps, Page 23;  
i) Parcel Map 1613 filed January 10, 1977, in Book 94 of Maps, Page 45
22. Water Easement: East Bay Municipal Utility District, a public corporation, recorded April 16, 1958, Instrument No. AP-37521, Book 8647, Page 71, of Official Records  
  
A portion of said easement was quitclaimed by instrument recorded January 28, 1986, Instrument No. 86-021717, of Official Records.  
  
A portion of said easement was quitclaimed by instrument recorded April 27, 2005, Instrument No. 2005167134, of Official Records.  
  
A portion of said easement was quitclaimed by instrument recorded May 31, 2007, Instrument No. 2007205081, of Official Records.
23. Gas Easement: Pacific Gas and Electric Company, a California corporation, recorded July 1, 1958, Instrument No. AP-64392, Book 8711, Page 279, of Official Records.

24. Easements for public utilities and their appurtenances, under, on and over the strip of land designated as "Public Utilities Easement (P.U.E.), drainage easement or sewer easement, or any other easement shown on Property Division Map Lot 2A, filed September 19, 1963, and Property Division Map 116, Parcel 2D1, filed June 18, 1964.  
  
25. Utility Easement: The Pacific Telephone and Telegraph Company, a corporation, recorded February 27, 1959, Instrument No. AQ-23433, Book 8946, Page 241, of Official Records.  
  
26. Utility Easement: The Pacific Telephone and Telegraph Company, a corporation, its successors and assigns, recorded August 20, 1959, Instrument No. AQ-99223, Book 9127, Page 537, of Official Records.  
  
27. Utility Easement: The City of Alameda, a municipal corporation, recorded September 1, 1959, Instrument No. AQ-103785, Book 9138, Page 461, of Official Records.  
  
A portion of said easement was quitclaimed by instrument recorded January 6, 2011, Series No. 2011005613, Official Records.

28. Water Easement: East Bay Municipal Utility District, a public corporation, recorded October 22, 1959, Instrument No. AQ-124987, Book 9188, Page 381, of Official Records.  
  
29. Power Easement: The City of Alameda, a municipal corporation, recorded October 21, 1960, Instrument No. AR-124542, Reel 191, Image 407, of Official Records.  
  
The effect of an Order Vacating a Portion of said Easement by the City of Alameda, recorded November 15, 1979, Instrument No. 79-232794, of Official Records.  
  
The effect of an Order Vacating a Portion of said Easement by the City of Alameda, recorded July 23, 2003, Instrument No. 2003428445, of Official Records.  
  
The effect of a Quitclaim Deed vacating a portion of said easement by the City of Alameda, recorded March 30, 2006, Instrument No. 2006123384, of Official Records.  
  
The effect of a Quitclaim Deed vacating a portion of said easement by the City of Alameda, recorded November 30, 2010, Instrument No. 2010352133, of Official Records.

30. Sewer Easement: City of Alameda, a municipal corporation, recorded July 17, 1961, Instrument No. AS-85660, Reel 366, Image 870, of Official Records.  
  
31. Power Easement: City of Alameda, a municipal corporation, recorded June 15, 1961, Instrument No. AS-72405, Reel 346, Image 35, of Official Records.  
  
32. Ingress and Egress Easement: William H. Hamblin and Mary E. Hamblin, recorded October 3, 1962, Instrument No. AT-134957, Reel 691, Image 831, of Official Records.  
  
Re-recorded October 25, 1962, Instrument No. AT-146161, Reel 708, Image 865, of Official Records.  
  
33. Public Utilities: City of Alameda, recorded October 30, 1961, Instrument No. AT-147979, Reel 711, Image 810, of Official Records.  
  
34. Water Easement: East Bay Municipal Utility District, a public corporation, recorded December 19, 1962, Instrument No. AT-174372, Reel 752, Image 240, of Official Records.  
  
35. Power Easement: The City of Alameda, recorded April 24, 1963, Instrument No. AU-69353, Reel 864, Image 15, of Official Records.  
  
36. Right of Way Easement: Russello and Rosenberg, a co-partnership, an undivided two-fifths interest; John Anthony and Lorraine E. Anthony, an undivided one-fifth interest, in joint tenancy; C. Robert Ide and Patricia E. Ide, an undivided one-fifth interest, in joint tenancy; Robert McChesney and Shirley McChesney, an undivided one-fifth interest, in joint tenancy, recorded May 6, 1964, Instrument No. AW-72481, Reel 1196, Image 278, of Official Records.

37. Ingress and Egress Easement: Wendav No. 13, a California corporation recorded, December 26, 1968, Instrument No. BA-142199, Reel 2316, Image 790, of Official Records.  
  
38. Right of Way Easement: Wendav No. 14, a California corporation recorded, December 26, 1968, Instrument No. BA-142201, Reel 2316, Image 797, of Official Records.  
  
39. Water Easement: East Bay Municipal Utility District, a public corporation, recorded March 17, 1969, Instrument No. 69-29009, Reel 2365, Image 35, of Official Records.  
  
40. PG&E Easement: Pacific Gas and Electric Company, a California corporation, recorded April 21, 1969, Instrument No. 69-43770, Reel 2387, Image 60, of Official Records.

41. Public Utility Easement: City of Alameda, Parcel Map No. 567, Book 64 of Parcel Maps, Page 34.

43. Ingress and Egress Easement: W. Shelby Oliver and Evelyn Oliver and Camping Construction Co., a California corporation, as to an undivided one-half interest, recorded August 31, 1971, Instrument No. 71-113869, Reel 2938, Image 399, of Official Records.  
  
45. Water Easement: East Bay Municipal Utility District, a public corporation, recorded May 18, 1972, Instrument No. 72-65640, Reel 3134, Image 209, of Official Records.  
  
46. Ingress and Egress Easement: Doric Development, Inc., recorded June 5, 1972, Instrument No. 72-74387, Reel 3148, Image 48, of Official Records.  
  
Amended Grant of Easement recorded March 13, 1973, Instrument No. 73-32734, Reel 3363, Image 169, of Official Records.  
  
47. Public Utilities Easement: City of Alameda, recorded December 16, 1974, Instrument No. 74-157887, Reel 3834, Image 330, of Official Records.  
  
48. Sanitary Sewer Easement: City of Alameda, a municipal corporation, recorded December 16, 1974, Instrument No. 74-157888, Reel 3834, Image 334, of Official Records.  
  
49. Electrical Easement: City of Alameda, Parcel Map 1445, Filed in book 84 of Parcel Maps, page 98.  
  
50. Telephone Easement: City of Alameda, Parcel Map 1445, Filed in book 84 of Parcel Maps, page 98.  
  
51. Easement for Ingress and Egress for vehicular traffic: Ronald H. Cowan, recorded January 16, 1975, Instrument No. 75-005177, Reel 3854, Image 811, of Official Records.

LOT LINE ADJUSTMENT MAP		
COMMON LINES OF PARCEL 1 & PARCEL 2 PER O.R. 2011005614, ALAMEDA, CA		
FOR: JAMESTOWN SOUTH SHORE CENTER, L.P.		
PREPARED BY BKF ENGINEERS, SAN JOSE, CA		
DRAWN: CASC		APPROVED: JVK, L.S. No. 8883
DATE: 02-05-19	SCALE: N/A	SHEET 3 OF 8
PLANNING DIRECTOR		CITY ENGINEER
DATE		DATE

EASEMENT LIST

EXHIBIT "A"

52. Easement for Ingress and Egress for vehicular traffic: Donald H. Cowan, recorded January 15, 1975, Instrument No. 75-005479, Reel 3854, Image 815, of Official Records.
53. Electric Easement: The City of Alameda, Bureau of Electricity, a municipal corporation, and the Pacific Telephone and Telegraph Company, a corporation, their successors and assigns, recorded April 4, 1975, Instrument No. 75-43182, Reel 3925, Image 110, of Official Records.
54. Ingress and Egress Easement: Pacific Southwest Realty Company, a Delaware corporation, recorded February 8, 1977, Instrument No. 77-23861, Reel 4712, Image 588, of Official Records.
55. Power Easement: City of Alameda, a municipal corporation, recorded October 2, 1979, Instrument No. 79-196972, of Official Records.
- The effect of a Quitclaim Deed vacating a portion of said easement by the City of Alameda, recorded March 30, 2006, Instrument No. 2006123384, of Official Records.
- The effect of a Quitclaim Deed vacating a portion of said easement by the City of Alameda, recorded November 30, 2010, Instrument No. 2010352133, of Official Records.
- The effect of a Quitclaim Deed vacating a portion of said easement by the City of Alameda, recorded January 6, 2011, Series No. 2011005612, of Official Records.
56. Sanitary Sewer, Storm Drain and Right of Way Easement: The City of Alameda, a California municipal corporation, recorded December 12, 1985, Instrument No. 85-264668, of Official Records.
57. Communications Easement: Pacific Bell, recorded November 19, 1986, Instrument No. 1986-289190, of Official Records.
61. Electrical Utilities Easement: City of Alameda, a municipal corporation, recorded August 15, 1997, Instrument No. 97207713, of Official Records.
63. Electrical Utilities Easement: City of Alameda, a municipal corporation, recorded May 9, 2000, Instrument No. 2000174368, of Official Records.
64. Public Utilities Easement: City of Alameda, a municipal corporation, recorded July 23, 2003, Instrument No. 2003428446, of Official Records.
65. Ingress and Egress Easement: City of Alameda, a municipal corporation, recorded January 19, 2005, Instrument No. 2005021716, of Official Records.

66. Water Easement: East Bay Municipal Utility District, a public corporation, recorded May 9, 2005, Instrument No. 2005182994, of Official Records.
- A portion of said easement was quitclaimed by instrument recorded May 31, 2007, Instrument No. 2007205081, of Official Records.
67. Public Utilities Easement: Pacific Gas and Electric Company, a California corporation, and Pacific Bell Telephone Company, a California corporation dba SBC California, recorded September 7, 2005, Instrument No. 2005383993, of Official Records.
69. Public Utilities Easement: City of Alameda, recorded April 19, 2006, Instrument No. 2006154219, of Official Records.
73. Water Easement: East Bay Municipal Utility District, recorded May 22, 2007, Instrument No. 2007196393, of Official Records.
75. Sidewalk Easement: Recorded November 6, 2008, Instrument No. 2008324670, of Official Records.
76. Public Utilities Easement: City of Alameda, recorded January 28, 2009, Instrument No. 2009027210, of Official Records.
79. Public Utilities Easement: City of Alameda, recorded November 30, 2010, Instrument No. 2010352135, of Official Records.
80. Public Utilities Easement: The City of Alameda, a municipal corporation, recorded November 30, 2010, Instrument No. 2010352136, of Official Records.
84. Sanitary Sewer Easement: City of Alameda, recorded January 12, 2012, Instrument No. 2012-012546, of Official Records.

EASEMENT NOTE:  
The numbering sequence of the existing easements, as shown on herein Lot Line Adjustment Map, follow the numbering sequence in the exceptions of the Preliminary Title Report, issued by Chicago Title Company, Title No.: FWAC-T018001022-KD, Update: A, and dated December 12, 2018.

EASEMENT LIST

LOT LINE ADJUSTMENT MAP		
COMMON LINES OF PARCEL 1 & PARCEL 2 PER O.R. 2011005614, ALAMEDA, CA		
FOR: JAMESTOWN SOUTH SHORE CENTER, L.P.		
PREPARED BY BKF ENGINEERS, SAN JOSE, CA		
DRAWN: CASC      APPROVED: JVK, L.S. No. 8883		
DATE: 02-05-19	SCALE: N/A	SHEET 4 OF 8
PLANNING DIRECTOR      DATE		CITY ENGINEER      DATE

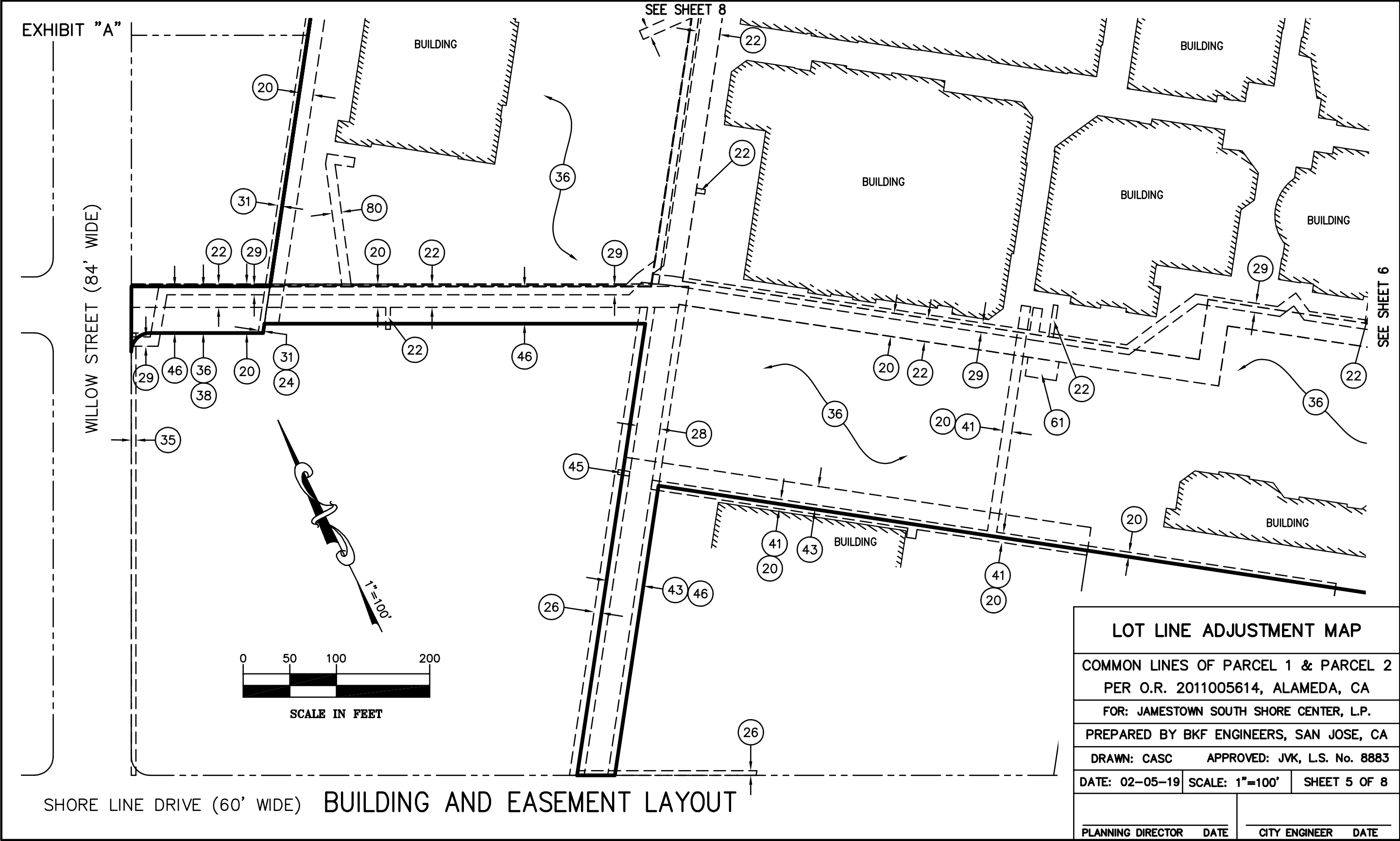
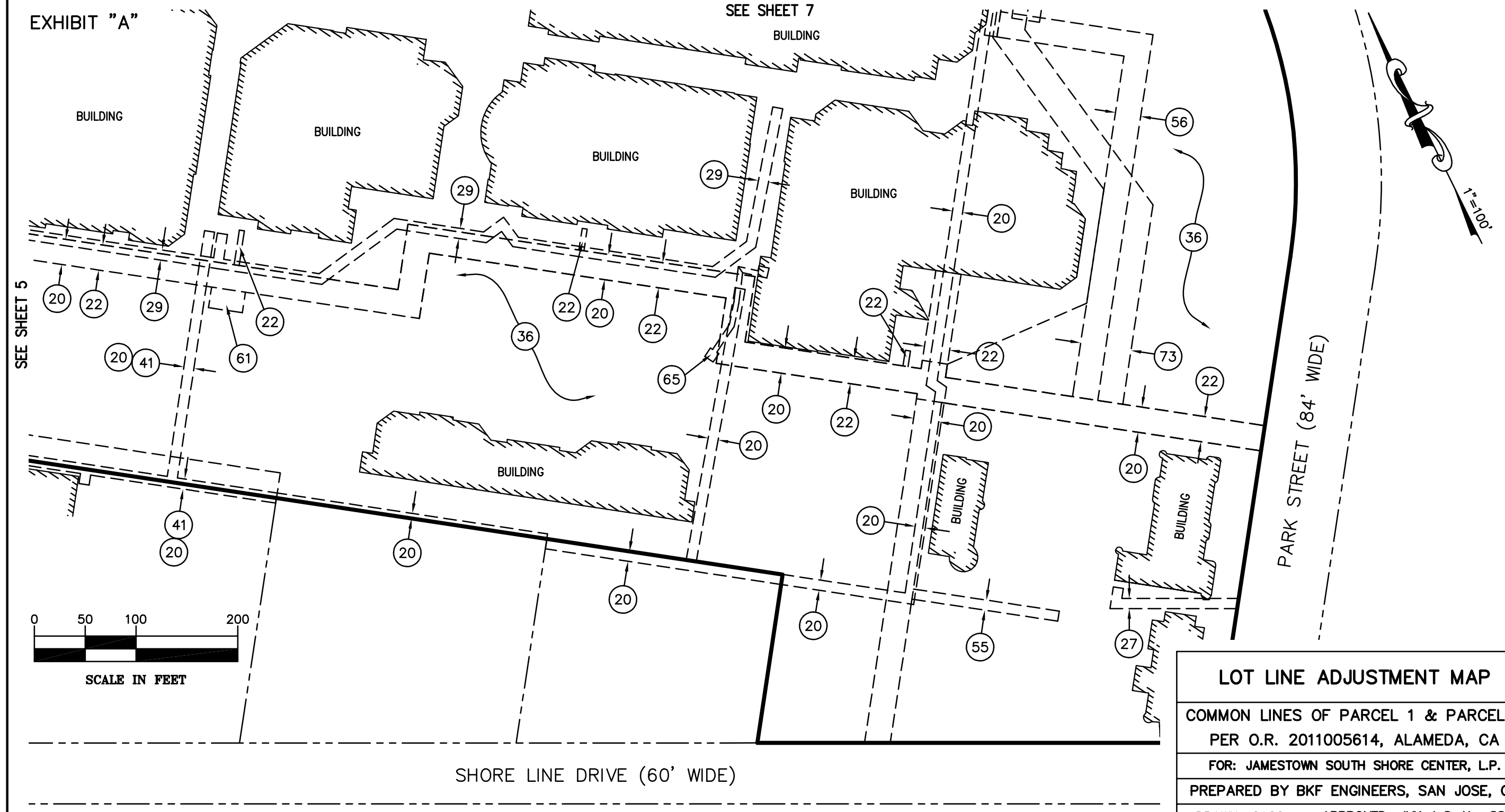


EXHIBIT "A"

SEE SHEET 7  
BUILDING



# BUILDING AND EASEMENT LAYOUT

## LOT LINE ADJUSTMENT MAP

COMMON LINES OF PARCEL 1 & PARCEL 2  
PER O.R. 2011005614, ALAMEDA, CA

FOR: JAMESTOWN SOUTH SHORE CENTER, L.P.

PREPARED BY BKF ENGINEERS, SAN JOSE, CA

DRAWN: CASC      APPROVED: JVK, L.S. No. 8883

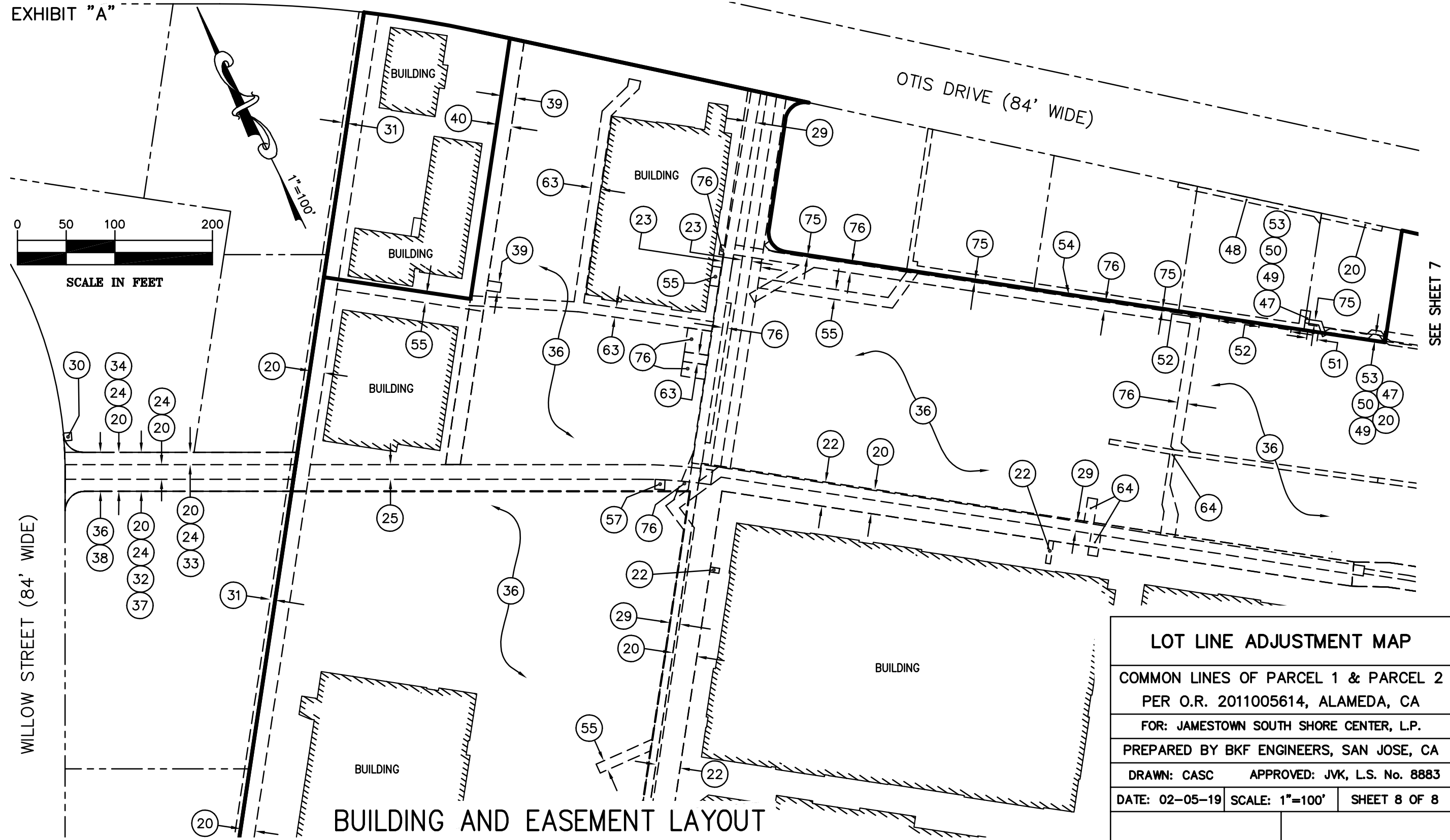
DATE: 02-05-19    SCALE: 1"=100'    SHEET 6 OF 8

PLANNING DIRECTOR    DATE

CITY ENGINEER    DATE



EXHIBIT "A"



### LOT LINE ADJUSTMENT MAP

COMMON LINES OF PARCEL 1 & PARCEL 2  
PER O.R. 2011005614, ALAMEDA, CA

FOR: JAMESTOWN SOUTH SHORE CENTER, L.P.

PREPARED BY BKF ENGINEERS, SAN JOSE, CA

DRAWN: CASC APPROVED: JVK, L.S. No. 8883

DATE: 02-05-19 SCALE: 1"=100' SHEET 8 OF 8

PLANNING DIRECTOR DATE

CITY ENGINEER DATE