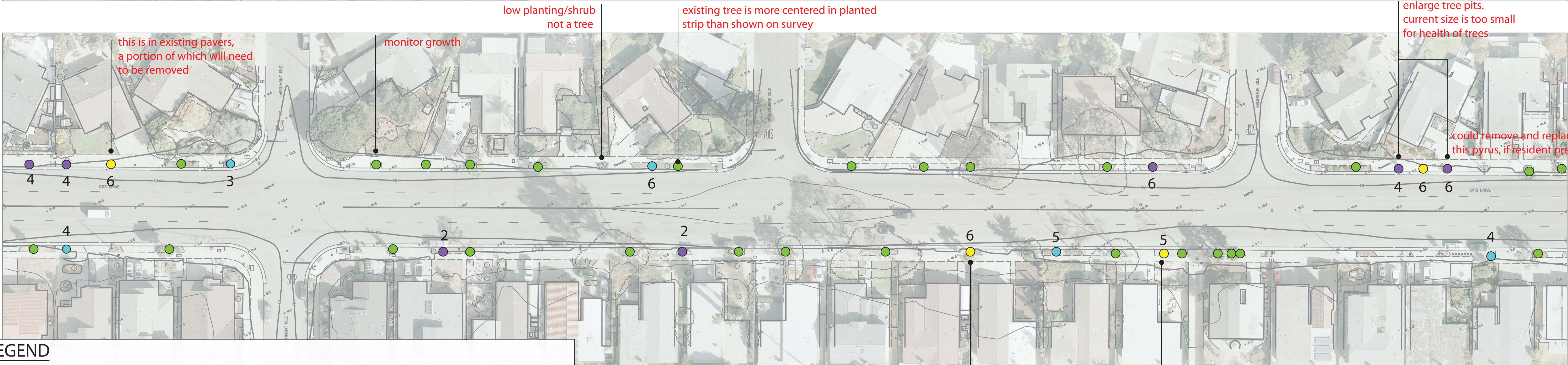
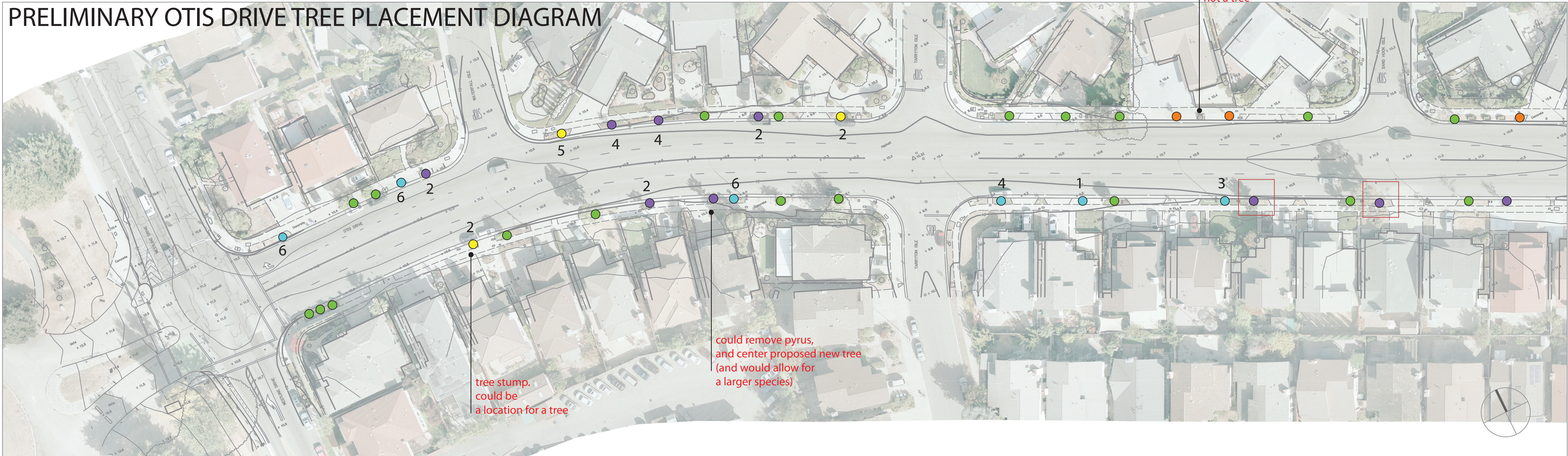


PRELIMINARY OTIS DRIVE TREE PLACEMENT DIAGRAM



LEGEND

- Proposed tree locations in existing empty tree wells
- Existing tree to remain
- Additional potential tree placement site
- Consider removal and replacement
- Pyrus tree to consider removal and replacement

- 1 *Corymbia ficifolia*
- 2 *Hymenosporum flavum*
- 3 *Koelreuteria elegans* ssp. *formosana*
- 4 *Lophosterum confertus*
- 5 *Melaleuca quinquenervia*
- 6 *Metrosideros excelsa*

- 7 *Parrotia persica*
- 8 *Tipuana tipu*

Parisi
TRANSPORTATION CONSULTING

1750 Bridgeway, Suite B208
Sausalito, CA 94965
(415) 649-6000

DRAWN: _____





DESIGNED: _____

CHECKED: _____

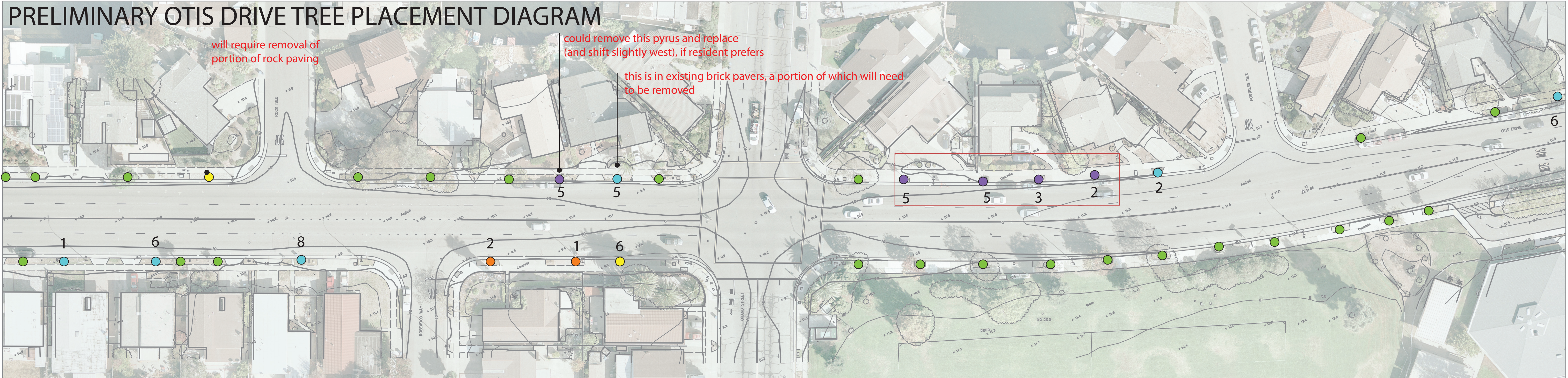
APPROVED: _____



CITY OF ALAMEDA
OTIS DRIVE AND TRAFFIC CALMING AND SAFETY IMPROVEMENTS
SURVEY BASE 1

REVISIONS		DATE	SCALE
		01/03/2019	1" = 40'
		PTC PROJECT NO. 18044	
		DRAWING L-1	
		SHEET NO. 1 OF 3	
NO.	DESCRIPTION		

PRELIMINARY OTIS DRIVE TREE PLACEMENT DIAGRAM



LEGEND

- Proposed tree locations in existing empty tree wells
- Existing tree to remain
- Additional potential tree placement site
- Consider removal and replacement
- Pyrus tree to consider removal and replacement

- 1 *Corymbia ficifolia*
- 2 *Hymenosporum flavum*
- 3 *Koelreuteria elegans* ssp. *formosana*
- 4 *Lophosterium confertus*
- 5 *Melaleuca quinquenervia*
- 6 *Metrosideros excelsa*

- 7 *Parrotia persica*
- 8 *Tipuana tipu*

Parisi
TRANSPORTATION CONSULTING

1750 Bridgeway, Suite B208
Sausalito, CA 94965
(415) 649-6000

DRAWN: _____

DESIGNED: _____

CHECKED: _____

APPROVED: _____

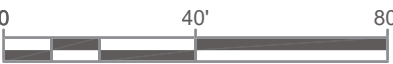
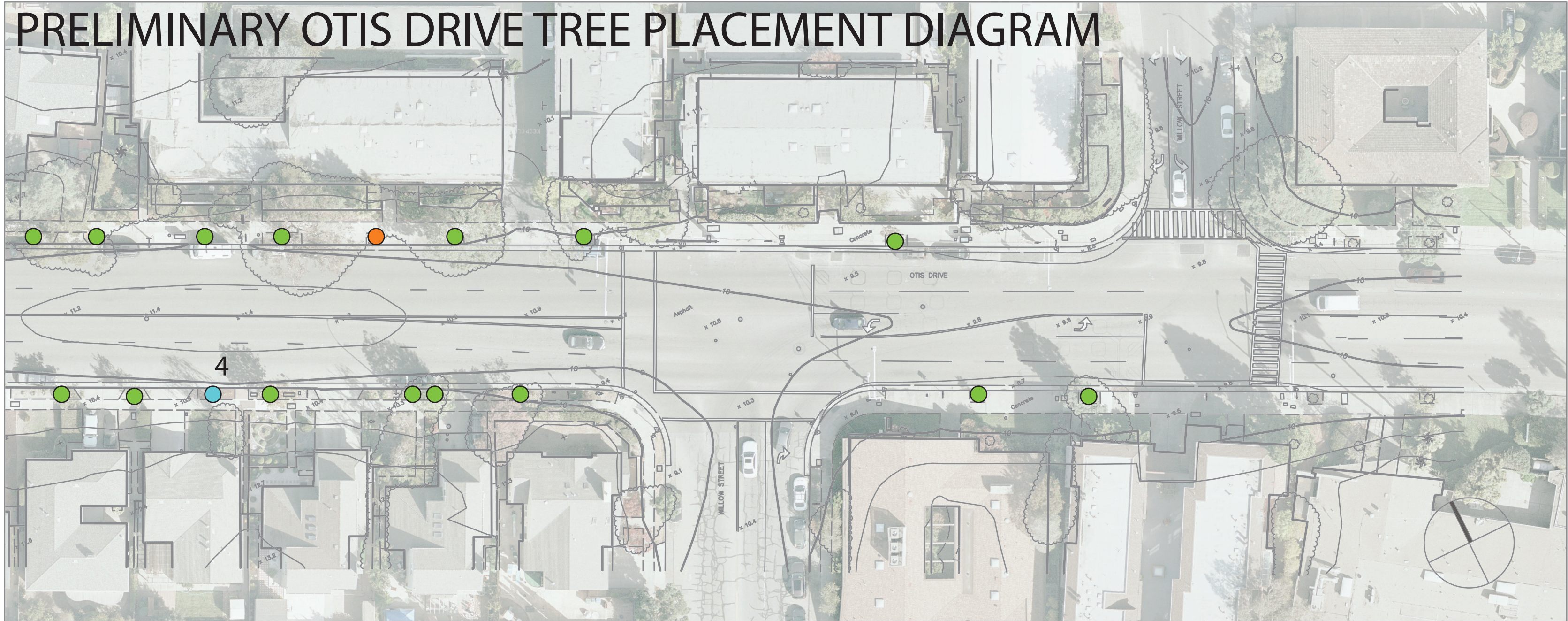
CITY OF ALAMEDA

OTIS DRIVE AND TRAFFIC CALMING AND SAFETY IMPROVEMENTS

SURVEY BASE 2

REVISIONS		DATE	SCALE
<div><div>5</div><div>4</div><div>3</div><div>2</div><div>1</div><div>NO.</div></div>		01/10/2019	1" = 40'
		PTC PROJECT NO.	18044
		DRAWING	L-2
		SHEET NO.	2 OF 3
DESCRIPTION			

PRELIMINARY OTIS DRIVE TREE PLACEMENT DIAGRAM



LEGEND		
	Proposed tree locations in existing empty tree wells	1 <i>Corymbia ficifolia</i>
	Existing tree to remain	2 <i>Hymenosporum flavum</i>
	Additional potential tree placement site	3 <i>Koelreuteria elegans ssp. formosana</i>
	Consider removal and replacement	4 <i>Lophosterum confertus</i>
	Pyrus tree to consider removal and replacement	5 <i>Melaleuca quinquenervia</i>
		6 <i>Metrosideros excelsa</i>
		7 <i>Parrotia persica</i>
		8 <i>Tipuana tipu</i>

Parisi
TRANSPORTATION CONSULTING

1750 Bridgeway, Suite B208
Sausalito, CA 94965
(415) 649-6000

DRAWN:	CHECKED:
DESIGNED:	APPROVED:

CITY OF ALAMEDA
OTIS DRIVE AND TRAFFIC CALMING AND SAFETY IMPROVEMENTS
SURVEY BASE 3

REVISIONS		DATE	SCALE
		01/10/2019	1" = 40'
		PTC PROJECT NO.	18044
		DRAWING	L-3
		SHEET NO.	3 OF 3
NO.	DESCRIPTION		