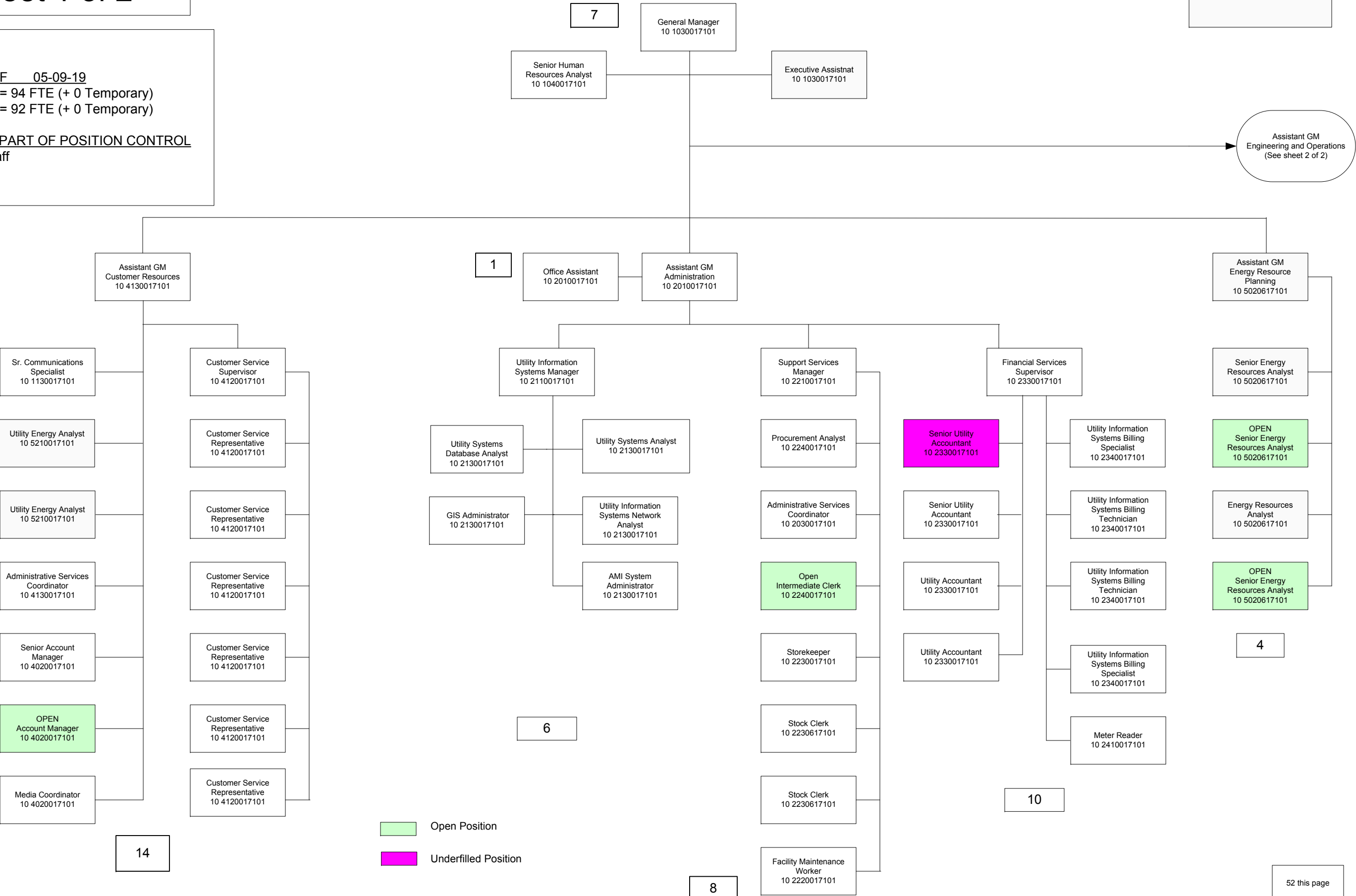


Sheet 1 of 2

4 Open Positions

POSITIONS AS OF 05-09-19
FY2019 Positions = 94 FTE (+ 0 Temporary)
FY2020 Positions = 92 FTE (+ 0 Temporary)

INCLUDED, NOT PART OF POSITION CONTROL
Temporary = 0 Staff



Open Position
Underfilled Position