



ALAMEDA RECREATION AND PARK COMMISSION MINUTES FOR REGULAR MEETING

DATE: Thursday, September 12, 2019
TIME: 7:10 p.m. Called to Order
PLACE: City Hall Council Chambers

A video recording of the meeting may be viewed at <https://alameda.legistar.com/Calendar.aspx>
The following are action minutes in keeping with the Sunshine Ordinance 2-91.17.

ROLL CALL

Present: Chair Limoges, Vice Chair Alexander, Commissioner Robbins and Commissioner Barnes
Absent: Commissioner Navarro
Staff: Alameda Recreation and Park Department (ARPD) Director Amy Wooldridge

Chair Limoges proposed to hear items 7-B and 7-C prior to 7-A. All Commissioners were in agreement.

APPROVAL OF MINUTES

Commissioner Robbins moved to accept the minutes of June 13, 2019 Regular Meeting as presented.
M/S Commissioner Robbins / Vice Chair Alexander. All in favor with a 3 ayes.

WRITTEN AND ORAL COMMUNICATIONS

- Written Communication
- Oral Communication

REPORTS FROM THE RECREATION AND PARK DIRECTOR

ARPD Director Amy Wooldridge gave the report. (See Exhibit 1)

REPORTS FROM COMMISSIONERS

Commissioner Robbins:

- Alex & Dennis did a great job again with the Annual Alameda Tennis Tournament with over 156 entrants, largest yet this year. Very well organized with t-shirts and food available to participants / audience.
- Great to see replacing of tennis court lights at.
- While at Sweeney park spoke with parents at the playground. They said this was the best kid's playground because their 9 year old and 5 year old had equipment to play with. They often go to Walnut Creek to Heather Farms for the kids to play because A) Heather Farms has 3 levels / different playgrounds next to each other so their kids of different ages can play at length and B) They have large plastic shade umbrella's for the parents to sit under while the kids play C) She said the one thing lacking at all of our parks for playgrounds is adequate shaded sitting for parents while their kids play.
- Bike for the Parks is coming up, don't forget to sign up!

Commissioner Barnes:

- Happy families at Paden using the RAP program, including Kindergarten
 - Other programs advertise at the Incoming Parent Orientation in January
- Went to Lincoln Park and its beautiful
- Timeline for new magnolia tree at Littlejohn Park
- Excited Woodstock Park playground will re-open soon
- Recreation and Park Commission float in next year's July 4th Parade

Vice Chair Alexander:

- Took the Alameda Walk to the USS Hornet.
- Attended Jackson Park community meeting. Very thoughtful meeting.
- Attended two Starlight in the Movies. Great event and would like to commend Shawn and his staff.
- Went to Tillman Park to watch the t-shirt baseball league game. Staff was wonderful.
- Took a tour of the Corica Park South Course, well done.
- Lincoln Park fence looks great.
- Took several trips to Krusi Park. When is building being demolished? Answer: Will get back to you.
- Has any work been done on the Alameda Point Campground? Answer: Bringing the Master Plan process to the Commission in November.
- Would like to see an article at least once a month about ARPD in the Sun and Journal.

Chair Limoges:

- Has marched in the 4th of July parade for 7 years with the Alameda Backyard Growers.
- Attended Jackson Park meeting and was interested to hear level and variety of comments.
- Attended Annual City Swim Meet in August, fun event.
- Took a training with the City of Alameda about procedures and transparency and the Sunshine Ordinance.
- Attended the groundbreaking for the Seaplane Lagoon Ferry Terminal
- Attended EBRPD meetings about banning the pesticide Roundup. Would like to see it agendized.

7-B Presentation on Carnegie Innovation Hall and the adjoining Foster House by Michael Sturtz which included history, intended use of the space and design concept. See Exhibit 2.

7-C Review Options and Provide Direction on a Jackson Park Natural Play Area.

ARPD Director Wooldridge gave the report which included the background, neighborhood meeting compiled comments and presented ideas and cost effective options for natural play space. See exhibit #3 for neighbors input.

Speakers

- Grace Rubenstein - Parent who lives on Park Ave. across from the park. Take all of these issues – traffic, noise – very seriously. Would love to see a play area there if done right. A huge benefit to knit the neighborhood closer together. Saw a small gathering area in Tahoe with seating and people gathered at night to talk. Improving pathway should come first as well. Seating as a perimeter is a brilliant idea. Would vote for a little slide. Kids love slides.

- Gary Cates – Lives at 1250 Park Avenue since 1974 and is opposed to a playground. Read a letter that is included in public comment letters, exhibit #3.
- Steve Aced – Board of Alameda Architectural Preservation Society advocates that natural environment be preserved and the addition of swings and slides is counter to that. Keep is as originally intended.
- Jim Lott – Live at 1193 Park Ave. across from the park. Opposed to the playground concept. A precious, narrow green space. Playground isn't a good fit for it.
- Lisa Klofkorn (handout attached) – Raised children in this neighborhood. A traditional playground that's fenced in doesn't fit in this park. The busy streets, poor condition of trees and asphalt all pose hazards. The survey heard by the Commission at previous meeting is skewed and inaccurate. Sign in sheet didn't ask for addresses of those attending neighborhood meeting. It was apparent that several people attending are from outside the immediate neighborhood, such as on Crist St. Map attached that shows overwhelming opposition from immediate neighborhood.
- Betsy Mathieson – Lived at 1185 Park Ave. for 19 years. Cool green space grows more important as Alameda grows. Jackson Park used to have more gathering places, such as picnic tables. Some have been removed to discourage loitering. Hope to recommend against installing a playground of any type. If do, it should be low profile, free of nooks and crannies, and easy to inspect for hazardous trash such as needles. If want a fenced playground, take kids to Edison playground, Lincoln or Krusi.
- Cybelle Kelley-Whitley – Lives in neighborhood for over 19 years. Kids grew up riding scooters, playing ball. Against having a playground at the park for reasons stated previously. Money should be spent on other issues, such as bandstand, trees, and sidewalks.
- Denise Nowicki – Lives on Park Ave. across from Jackson Park. People who live across from park are most impacted and weren't included in original survey. Many uses during the day – people sitting on lawns, picnicking at tables, moms' groups, dog training. People do value the park for what it is and what it was designed to be. Raised their daughter at that park and not every park needs to be like the others with the same amenities. Ask to honor how Jackson Park is now.
- Kevin Vinkiteswaran – Lives 5 blocks away with two small children. Like the focus on activation of the park. More people using it more regularly would be good to discourage activities that we don't want such as litter, people inebriated and sleeping on the grass. Wants to go to a park that builds community of all ages. Thrilled with something more natural to complement spirit of the park.
- Charlise Tiee – 2058 Park Ave. with small children. Parking is so difficult in the neighborhood and don't want to move the car so walk to Lincoln Park or Krusi Park but it's a long walk that takes a lot of time. Would love to take them to Jackson Park but there's a homeless guy who sleeps in the park daily which is not most inviting thing. Great need for us to have a playground. Lincoln Park was so crowded this summer. Would be great to take them somewhere safe and nice.
- Amanda LaThanh – Live on Park Ave. across from the big picnic bench. Thanks for ideas on natural playground. A lot of parents can't be here who emailed and voiced their opinion. Don't want to make it so tiny that it isn't used. Like the idea of the large frog since the park was originally dedicated to animals. Playground is great idea to activate the park. We should value history and also value those who live today and what they are asking for. Advocate for more funding for lighting and pavement.

- Tim Martin – Lives on Bay Farm. Represent an Alamedan who comes to Park Street with small children every Friday. When kids want to play, have to walk all the way to Edison and back, which is a long way. Don't park at the park but over near the high school and would walk there. In other large cities, there are a lot of neighborhood parks due to a mandate for walkable parks. Each serves young people and older people and everyone. Don't think giant swings are necessary but fun stuff for the kids, more than logs and benches, is important.
- Misha Chellam – a lot of the comments opposing the play space are valid but not "keep Jackson Park Green" because this is a small area going over an asphalt area so it doesn't impact green area. A lot of people who live around the park want to keep it as is. As a neighborhood who lives a couple blocks away, feel that it's not that inviting. Philosophical – whose park is it? Love the concept of seating that rings the area to promote community. Helps solve problem of kids going in different directions without a tall fence.
- Claire Mathieson – Lives across from the park and is reading correspondence on behalf of neighbors, the Lees. No interest in a playground. Have two small children who love open space, climbing trees and would like better asphalt for riding bikes. Concerned about health of trees. Play bocce or croquet on green space. No need for a play structure. Not an appropriate use of funds with so much maintenance to consider.
- Toni Grimm – Argues against a play structure in the park. Heard that want a place to play and says you can do that right now the way the park is. When moved here in 1976, had a young child who used the park throughout all ages of her childhood. What is overall vision for offering park throughout the city? Have a variety of experiences in different parks. Older people who walk the park, walk dogs in a serene park. Neighbors across from the street are more impacted by what happens in the park. Should take that into consideration.
- Janet Magleby – Executive Director of Downtown Alameda Business Association. Really believe Jackson Park is in need of a face lift and like that it's being considered and budgeted. Association is excited about opportunity about beautiful, natural play space because it's not cookie cutter and you can see minds and muscles being used in this space. Imagination and climbing. Parents bringing families to Park Street is exactly why Association is interested in this play space. Jackson Park is a downtown gem and need to connect it to downtown. So people can enjoy downtown and also go enjoy a peaceful park.
- Scott Birmingham – Lives on San Jose and Broadway a couple blocks away. Feel there's huge room for compromise. Think a small area that's designated for children that's currently an asphalt slab doesn't affect huge portions of park that remain as grass green space areas for bocce and use. Like the ideas to keep it natural and designed with benches around area.

Vice Chair Alexander motioned to accept Option 3 to build a small gathering place that is a natural play area with lots of input from the community members.

M/S Vice Chair Alexander / Commissioner Barnes. Motion carried by the following voice vote: Ayes: Chair Limoges, Vice Chair Alexander and Commissioner Barnes – 1. Noes: Commissioner Robbins.

Commissioner Barnes move to prioritize the deferred maintenance at Jackson Park including if possible, prioritizing Jackson Park's lighting replacement as highly as possible on the list and

addressing the pavement issues as well.

M/S Commissioner Barnes / Commissioner Robbins. Motion carried by the following voice vote: All in favor with a 4 – 0.

NEW BUSINESS

- **7-A** Presentation of Mastick Senior Center Annual Report
Jackie Krause, Recreation Manager gave the report which included stats on the membership and programs and information on travel opportunities, community collaborations, the Advisory Board, budget, projects, volunteers and staff.

ITEMS FOR NEXT AGENDA:

- FY 2019-2021 Final Budget Overview
- Annual User Fee Schedule

SET NEXT MEETING DATE: Thursday, October 10, 2019. Director Wooldridge suggested to change the regular meeting due to the possible absence.

ADJOURNMENT

M/S Vice Chair Alexander / Commissioner Robbins
Chair Limoges adjourned the meeting at 10:10PM.

EXHIBIT 1

09/12/19 ARPD Director's Report – Presented by Recreation and Park Director Amy Wooldridge

Mastick Senior Center

- Included in Mastick Senior Center Annual Report

Parks Maintenance

- Welcome to our newest Parks Maintenance Gardener, Nigel Lewis.
- Replaced the historic fence at Lincoln Park which was damaged by a driver under the influence. The Alameda Architectural Preservation Society gave us accolades for doing quality work and accomplishing it quickly.
- Installed a new drinking fountains at skate park, Washington Park and Lincoln Park
- Renovation with aeration, top-dress and seeding at Multi-purpose, Tillman, Harrington, Bayport Fields.
- Ivy along fence at Lincoln Park that's shared with neighbors was significant cut back. Also trimmed and addressed all trees at Lincoln Park.
- Significant landscape work done at Harrington Park by trimming down bushes.

Recreation Services

- Recently hosted well received community events which included Starlight Movie in the Park, Opera in the Park and the 106th Annual City Tennis Tournament where there were 156 entries this year.
- National Coastal Cleanup at Shoreline Beach takes place on Saturday, September 21. Please get out and volunteer to clean your local environment. Events start at 9:00am.
- The 4th Annual Bike for the Park event is Saturday, September 28. All proceeds directly benefit the Alameda Recreation and Park Department. Details and registration at Friends of the Park Foundation, www.alamedaparks.org. It's a fantastic event with a supported 25-mile ride and 8-mile family ride.
- Teen Haunted House will once again be presented by more than 70 Alameda teen volunteers who envision and build the theme, props, and costumes. This is a fun and creative way for teens to earn community service hours and funds generated are designated for teen programs.
- Staff is working to continually refresh programs to keep up with new trends, changing populations, and finding ways to balance affordability for participants with increasing program costs.

Administration

- **Krusi Park Recreation Center** is being replaced with a new 2,000 square foot facility that will be available for after school and summer programs, community rentals, classes and other programming. This project is occurring in three phases – the electrical is complete and the site work is commencing on September 17th. The final phase is the building, which is a pre-fabricated building being built in parts offsite and will be constructed onsite later this year. As of 9/17/19, the existing restrooms will no longer be available but portable toilets are in place for the public. The playground, fields and picnic area remain open to the public.

- **Encinal Boat Launch Facility** construction started a couple weeks ago and is funded by the Division of Boating and Waterways in the amount of \$1,450,000. The boat ramp is closed for construction of a new two-lane ramp with two boat docks for motorized and non-motorized watercraft, a new restroom, lighting, ADA improvements, fish cleaning station, outdoor shower and resurfacing the parking lot. Construction will be completed in January 2020 and the boat launch facility re-opened to the public. The rock wall is still available for fishing and the beach access remains open for all non-motorized boat launching.
- **Woodstock Park Playground.** There has been an outpouring of community support to replacement Woodstock Park playground that was destroyed in an act of arson. A GoFundMe campaign raised \$24,173 from 286 individual donations. The Oakland A's Community Fund and Alameda Community Fund each donated \$5,000 and the Community Learning Center Schools Board of Directors (the governing body of NEA and ACLC, two charter schools adjacent to Woodstock Park) is considering a significant donation later this month. The playground design remains the same and the supplier, GameTime, approved a grant for a 50% discount. The playground is anticipated to open by the end of 2019.
- **Swim Center.** The City Aquatic Center conceptual design Request for Proposals was issued and includes three design concepts and cost estimation. These conceptual designs will be discussed at a community meeting and brought to City Council later this year for final approval along with funding options. Regarding the Emma Hood Swim Center repair, the School District applied for the County permit at the end of August and plans to have the repairs completed by the end of 2019.
- We are hosting a site visit with SF Bay Conservation and Development Commission staff to tour several shoreline sites and upcoming projects.

Next Agenda

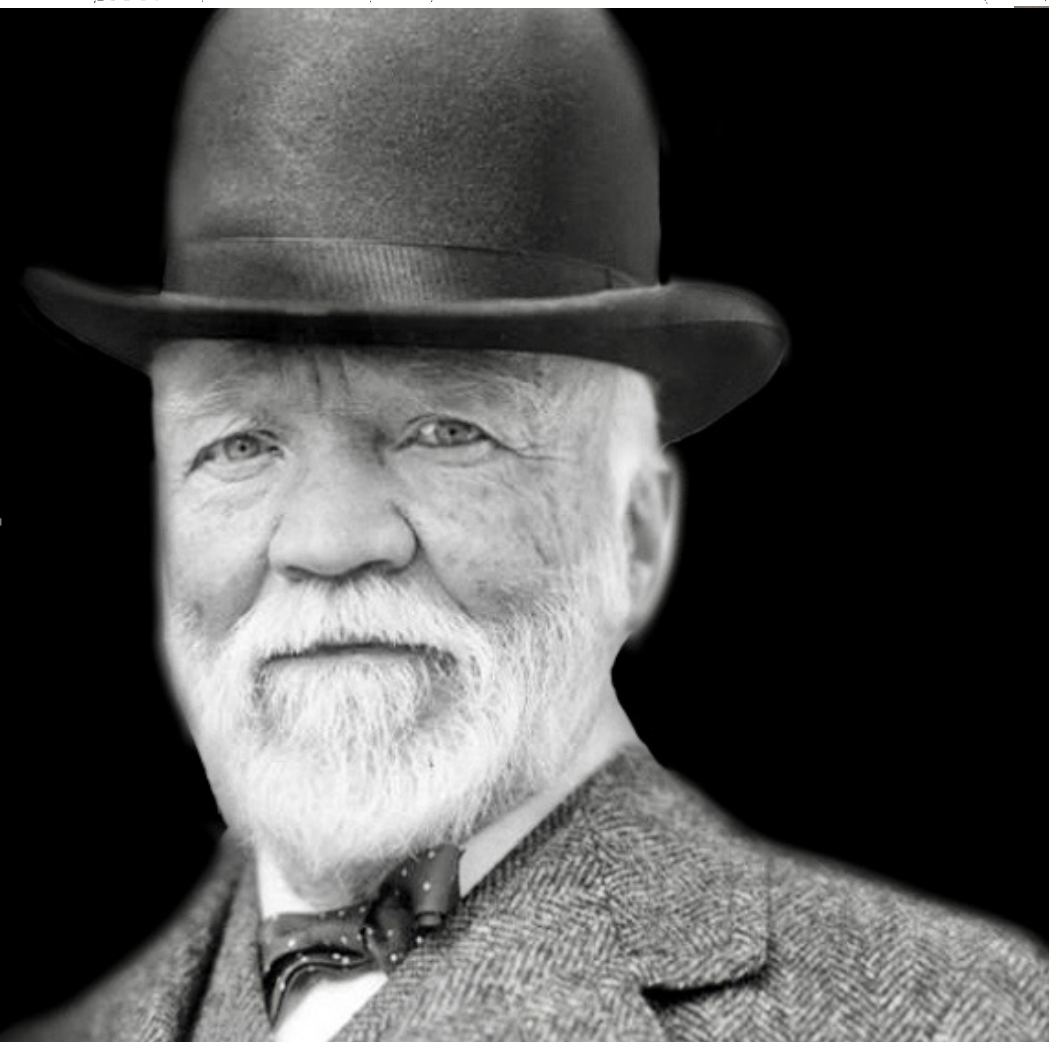
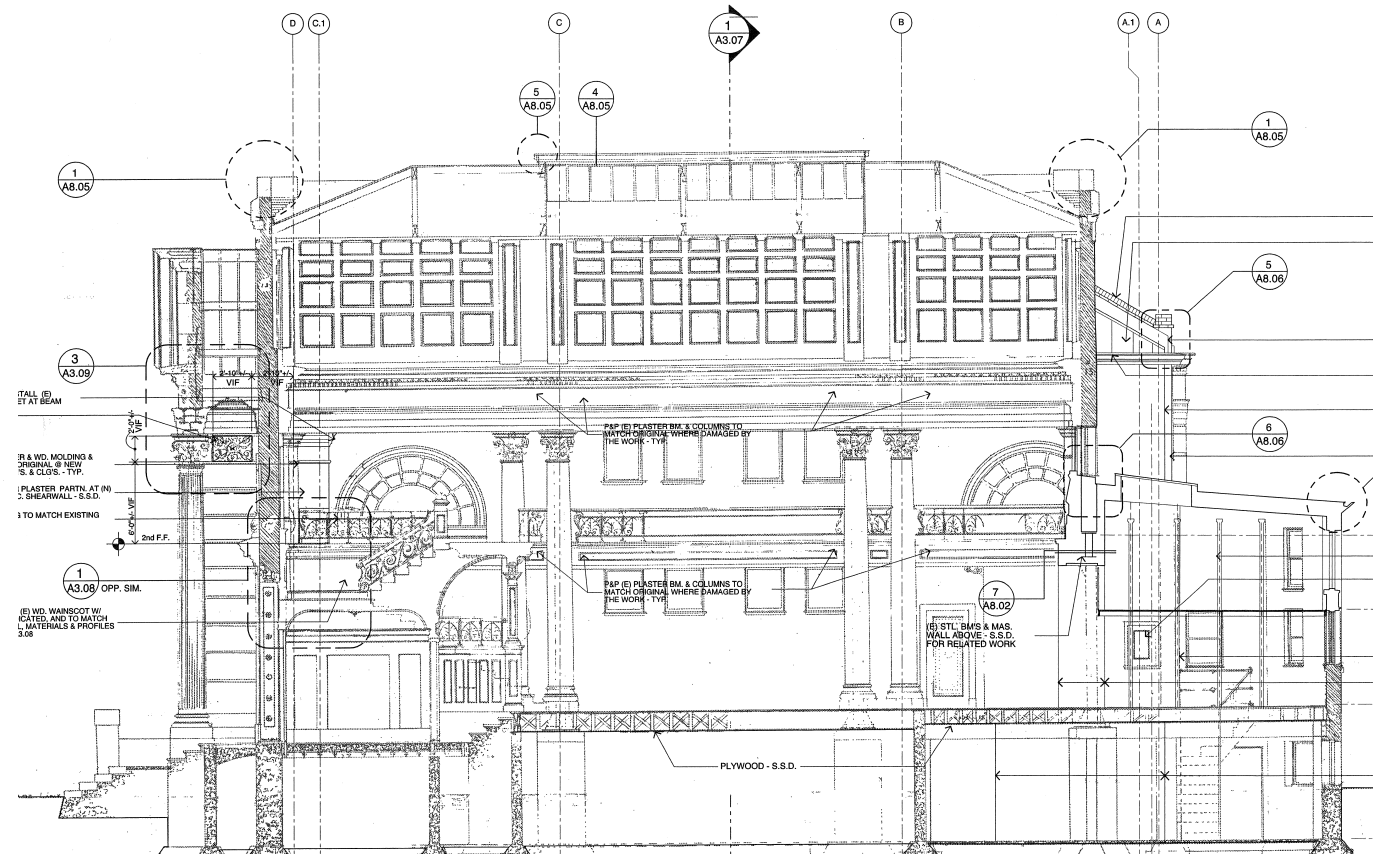
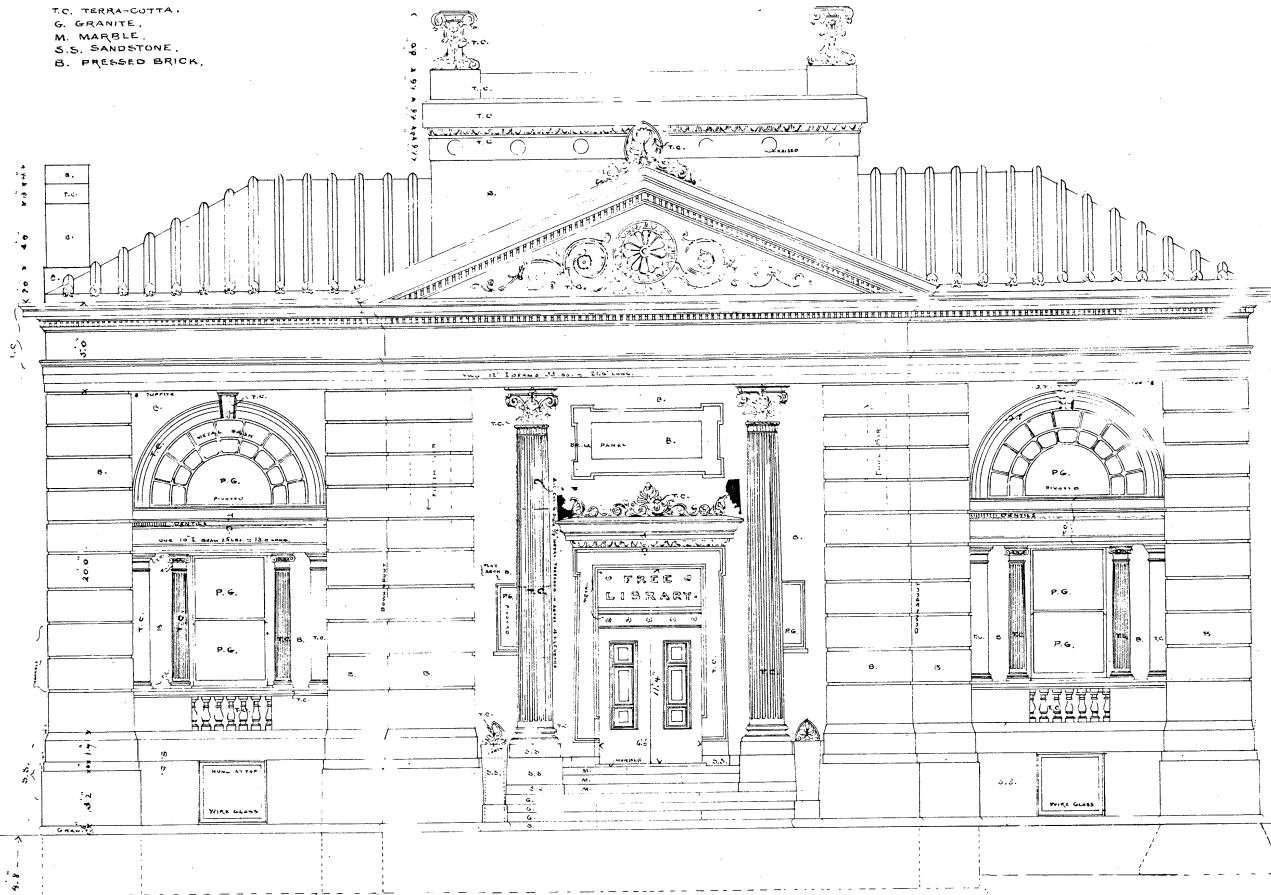
- Alameda Point Park Design Review
- FY 2019-21 Budget Overview
- ARPD 2020 User Fees Schedule



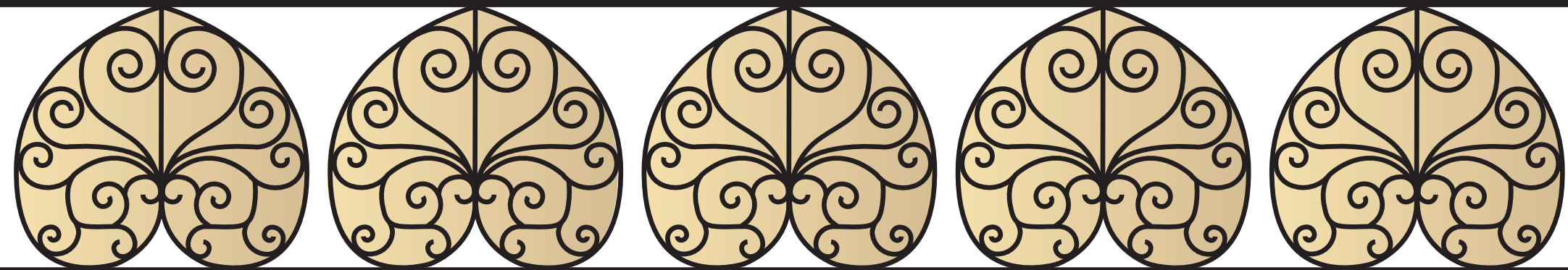


We are building an amazing team, join us and help make this happen

NOTE.
T.C. TERRA-COTTA.
G. GRANITE.
M. MARBLE.
S.S. SANDSTONE.
B. PRESSED BRICK.



ANDREW CARNEGIE
PRESENTED THIS BUILDING TO
THE CITY OF ALAMEDA
AD 1902



CARNEGIE

INNOVATION HALL

Carnegie Innovation Hall is a state-of-the-art center for innovation that pairs educational programming and entrepreneurship with arts, performance, music, and technology. This one-of-a-kind center features engaging workshops and educational programming by day; and theatre, performing arts, and community events in the evening.



We combine technology, theater, arts, and innovation in a place where our community is invited to dream, learn, design, and grow. We aim to serve as an entrepreneurial launchpad, empowering participants of all ages and backgrounds to imagine, create, and broadcast their ideas to the world.



The most impactful and least intrusive upgrade to the Carnegie is state of the art technology: digital sound, video, film, broadcasting, motion capture, augmented reality, virtual reality, and beyond.





















CT Education Opportunities







Community Media Center



A sampling of the types of community uses this project could make available.

Events BenefitsAnnual Neptune Beach Summer Festival

- Annual Halloween Haunted House
- Annual December Tree Lighting Event (participation / support)
- Annual December Arts & Craft Gift Show
- Chinese New Year Festivities
- Summer Outdoor Theater Events
- Non-Paid City Events (12 per year included, others on request)
- 36 Discount Community Events (others on request when available)
- School Dances and Proms
- School Graduation Ceremonies
- Bat and Bar Mitzvahs, Confirmations, and other ceremonies
- Quinceañeras
- Weddings and Birthdays
- Corporate Events and Year-end Parties
- Public Town Halls and Meetings
- Open Mic Nights
- Karaoke Nights
- Live Music Events
- Live Theatrical Productions
- Immersive Theater Experiences
- Dress-up Dinner Theater Shows
- Drive-in Shakespeare
- And More...

Educational Benefits

- Weekly Historic Tours
- Ongoing Educational Programming (Youth and Adult)
- Youth Summer Camps
- Youth After-school Programs
- Art Therapy and Special Ed Programs
- Alameda High School Community Access Television

Economic Benefits

- Networking
- Skills, Knowledge, and Business Development
- Entrepreneurial Coaching and Courses
- Professional Internships
- Career Pathway Development
- Idea and Start Up Incubation
- Kickstarter Launchpad
- Youtube Content Producer Channel Recording Suites
- Audio and Video Recording Suites

Please help us grow this list























NO TRESPASSING
AREA CLOSED TO THE PUBLIC
BEYOND THIS POINT
AUTHORIZED PERSONNEL ONLY

WHEELCHAIR
ACCESSIBLE

Potential Community Partners

Academy of Alameda	College of Alameda
Alameda Architectural Preservation Society	Dance10 Performing Arts Center
Alameda-Based Community Theater Company	Downtown Alameda Business Association
Alameda Boys & Girls Club	Encinal High School
Alameda Civic Ballet	Foodshift
Alameda Community Band	Frank Bette Center for the Arts
Alameda Education Foundation	Ginny Parsons
Alameda Education Fund	Girl's Inc of the Island City
Alameda Museum	Greater Alameda Business Association
Alameda Naval Air Museum	Pacific Pinball Museum
Alameda Point Collaborative	Rhythmix Cultural Works
Alameda School of Music	Saint Joseph Notre Dame High School
Alameda String Academy	Starland Music
Altarena Playhouse	Studio 23
Art Yowza	The California Historical Radio Society
Artistic Home Studio	The USS Hornet Sea, Air & Space Museum
Boys and Girls Club of Alameda	Tomorrow Youth Repertory
Chamber of Commerce	West Alameda Business Association
	Yu Ying Learning (Mandarin bilingual school)

We need your help to grow out this list

Ways you can help make this happen:

Join the

- Fundraising Committee
- Finance Committee
- Public Outreach Committee
- Diversity Committee
- Historic Restoration Committee
- Educational Programming Committee
- Entrepreneurial Programming Committee
- Event Programming Committee
- Technology Committee
- Community Advisory Board
- Board of Directors

Volunteer to help with

- Community organizing
- Event planning
- Administration
- Writing
- IT and Infrastructure



Check our website

For future meetings and join our mailing list

carnegieinnovationhall.org



VISUALIZING CARNEGIE INNOVATION HALL

JOIN US

Alameda's historic Carnegie Library is being restored into Carnegie Innovation Hall: a state-of-the-art center for performance, education, technology, and community and we need you!

Participate in a community workshop and explore the possibilities for this project. Be ready to jump in, meet our team and learn how you can participate in our growing community.



SEE YOU THERE!

Your presence and engagement in these ongoing workshops is essential to ensure the Carnegie Innovation Hall grows into an Alameda space that:

- Creates programming which radically includes our entire community
- Includes diverse community needs in creative and equitable ways
- Builds upon the assets of our community

SUN

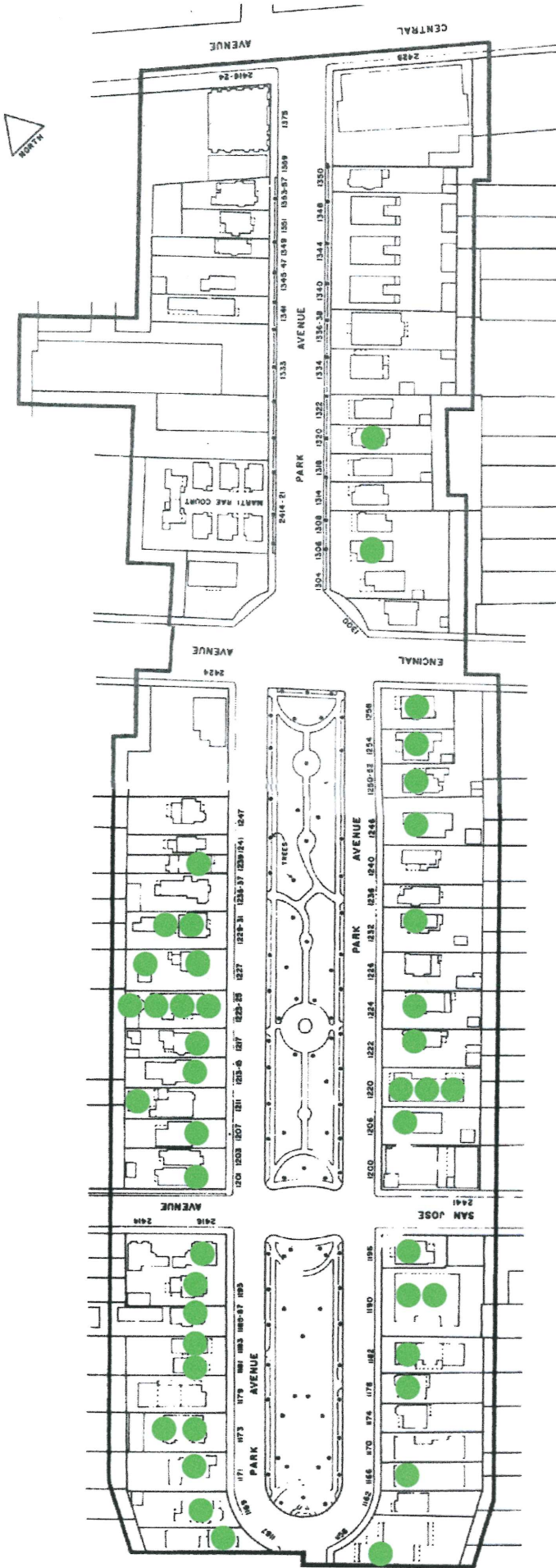
15 SEPT 2019
2PM TO 4PM

ALAMEDA MAIN LIBRARY

STAFFORD ROOM

1550 OAK STREET, ALAMEDA, CA 94501

Park Avenue Heritage Area | September 2019



Residences opposed to having
playground in Jackson Park
(based on a partial survey)



I'm Lisa Klofkorn. I have lived across from Jackson Park for twenty years, and previous to that lived for ten years in the neighborhood where many of the pro-playground folks now reside. I raised my children in these two neighborhoods and I'm intimately familiar with both.

A traditional playground, especially any structure that needs to be fenced in, doesn't fit into this narrow park, which was originally intended for passive recreation. Other factors that make this site a poor one for a playground include the busy streets that surround the park on all sides, the poor condition of the existing trees that may pose a hazard, and the lack of sufficient parking (as this is an extremely high density neighborhood with many multi-unit dwellings).

I reviewed the video of your May 9 meeting. The social media surveys mentioned did not ask respondents for their addresses, so it would not be possible to know if the respondents were from the immediate area. The results stating that all respondents were for having a playground built in Jackson Park were inaccurate, as I and others responded to the Nextdoor survey with our opposition and concerns, but these comments were not referenced in the May 9 meeting. I'm attaching a few of these responses in the packet I'm leaving with you tonight.

In Ms. Wooldridge's report on the July 30 meeting in Jackson Park, which I attended, she comments that of those who voiced opinions about half were for the playground and half were opposed. The sign-in sheet did not ask for the addresses of those in attendance. After that meeting I wrote to Ms. Wooldridge to clarify what was meant by "neighborhood" in reference to the city council's stipulation that the playground was "contingent upon neighborhood approval". She wrote back that the city generally uses the standard of 300' from any given project. At the July 30 meeting it was apparent that several of the people voicing their approval of the proposed playground were from areas outside the immediate neighborhood, including those

who live in my old neighborhood on and near Crist Street. Those that spoke primarily in opposition to having the playground were residents living in the immediate vicinity of the park, residents living within the 300' radius the city designates as the neighborhood needing to give approval. So, not all who spoke were from the immediate neighborhood (within the 300' radius), and many were from outside the immediate neighborhood, thus giving an inaccurate appraisal of the situation. I have printed out an updated map of Jackson Park and its surrounding residential neighborhood showing those residences opposed to having a playground built in the park. This map illustrates the overwhelming opposition this neighborhood has to the addition of a playground in Jackson Park.

In addition I am including a copy of the Conceptual Master Plan of Jackson Park, drawn up twenty years ago, in hopes that the city would see fit to implement some of the improvements included in this plan, as well as seeing to much needed deferred maintenance this park sorely needs.

Nextdoor Jackson Park Playground Survey • March 2019

Examples of comments posted to this survey that were in opposition to having a playground built in Jackson Park.



Monica LeMaster, East End Zone

I'm very fond of the gorgeous trees and open green space, so I am against losing any of the trees(—even if they're not intentionally cut, could their roots get unintentionally damaged through construction?). I personally don't think of the park as underutilized, as I've found things to do with my kids there for the last 12 years. Though in those 12 years, I've also wished for a playground from time to time, especially when I have toddler in the house; I've learned to just bring a ball and enjoy the space as is though—building fairy houses with the sticks is another favorite activity. I'm open to hearing more about the idea though. I know there are a lot of families with young children in this neighborhood, some new and some old, and I would love to meet them at a local, public playground.

Edited 22 Mar [Thank](#) [Reply](#)



6



Terri Ogden, East End Zone

I am a devoted supporter of recreation in Alameda, having worked at the parks and serving on the recreation commission. That being said, I am very much devoted to free play instead of always structuring children's play time. My aunt used to live on Park Avenue and I can remember having some awesome fun running around the park with my cousins playing for hours without the need for playground equipment. There is a lot to be said for the imagination.

22 Mar [Thank](#) [Reply](#)



4



Mimi Laubach, Whale's Eye

I like Jackson Park as it is. I think ARPD could do more with the park—maybe Sunday afternoon concerts in the bandstand, upgrade the pathways and add flower beds in areas. Most of our city parks have play structures already and we have few “green” parks where we can enjoy simple nature in Alameda.

28 Mar [Thank](#) [Reply](#)



3



Lisa Kloforn, East End Zone



I have lived in a house facing Jackson Park for twenty years. I do not normally have objections to adding playgrounds to existing parks, however, in regards to Jackson Park I have a few concerns.

First, when this park underwent renovations in 2001, the proposed renovation included two phases. Phase one, including the restoration of the bandstand, was completed. It's my understanding that phase two, including much needed improvements to pathways, lighting, and such, was never done due to budgetary constraints. These improvements are still very much needed in this park. How can the expense of adding a playground be justified when much needed park improvements have not been implemented?

Secondly, if a playground is added would a fence surrounding this playground be necessary due to safety concerns, because of the close proximity of Park Avenue on both the east and west sides of the park? If a fence is needed I have worries this may negatively impact the beauty and openness of the park. This park is very narrow by design and the space may not lend itself well to the addition of a fenced off area within its boundaries.

21 Mar [Reply](#)

😊 6



Monique Lopez, East End Zone



No thank you

22 Mar [Thank](#) [Reply](#)

😊 1

Subject: Jackson Park playground proposal

Date: Sunday, July 21, 2019 at 4:32:43 PM Pacific Daylight Time

From: Gary Cates (sent by gary cates <glcbfd1967@gmail.com>)

To: mezzashcraft@alameda.gov, awooldridge@alameda.gov

CC: jacksonparkwatch@googlegroups.com

BCC: Sarah Foltz, mary ann cates, gary cates

Dear Mayor Ashcraft and Ms. Wooldridge,

We purchased our home at 1250 Park Avenue in April of 1974. We raised two children here and now have two teenage grandchildren all of whom spent many hours enjoying the wonders of our beautiful Jackson park.

They were allowed to use their imagination to enjoy what little green space we have in a very urban setting. The park was never intended to include a playground. This became evident when the private properties owned by the residents of Park Avenue were deeded to the City for the purpose of building what would become Alameda's first Park.

For example, a fire station was once proposed for much of the space and rejected once restrictions outlined in the property transfer agreement were revealed. Because of the park's proximity to a commercial district and Alameda High School the park and those of us who share the area are often exposed to negative conditions such various types of litter, including discarded food packaging, drug paraphernalia and liquor bottles and the noise of late night partying. The addition of a playground could serve as a magnet for many unauthorized activities that would only exacerbate these problems.

The park was conceived as a "landscape promenade" that did not incorporate concepts of play and recreation such as playgrounds and sports fields. These elements can be found in later developed parks such as Lincoln and Washington and others.

The historic nature of the creation of the park and the wishes of the original grantors must be respected. We fear that we may be living in a time where the concept of respect for history is being eroded.

We understand and respect those who feel that a playground would provide improvements to our park. However in light of what is stated above we must oppose this proposal.

Sincerely,

Mary Ann and Gary Cates
1250 Park Ave

From: [Erin Zajonc](#)
To: [Amy Wooldridge](#)
Subject: Support for Jackson Park Play Space
Date: Thursday, September 12, 2019 2:54:32 PM

*** **CAUTION:** This email message is coming from a non-City email address. Do not click links or open attachments unless you trust the sender and know the content is safe. Please contact the Help Desk with any questions. ***

Dear Amy,

I wanted to share with you my support for a play space at Jackson Park. My family loves downtown and think that a nearby play space would make it even better.

Not only will it provide a space for children to run around and socialize but it will also build community and improve Jackson Park. One time, my husband went to Jackson park for my son to run around - but found it less inviting with people loitering for lack of a better word.

Likewise, If there were a play space close to downtown, my family and I would eat and shop there more often because we would have a space for our son to burn off some energy before and/or after.

We understand that there are fiscal considerations and therefore support the Commissioners to get conceptual designs for the potential play space.

Thank you for your time,
Erin Fong-Zajonc

From: [Jessica](#)
To: [Amy Wooldridge](#)
Subject: Jackson park
Date: Thursday, September 12, 2019 5:01:19 PM

*** CAUTION: This email message is coming from a non-City email address. Do not click links or open attachments unless you trust the sender and know the content is safe. Please contact the Help Desk with any questions. ***

Hi Amy,

I'm unable to attend tonight's city council meeting because it conflicts with my toddler's bedtime but I am emailing to express my support for building a small natural playground at Jackson park. I was at the meeting held at the park about a month ago and wish I was able to attend this meeting.

I would like to see the Commissioners support hiring a landscape architect to create 2-3 conceptual designs to help create a beautiful functional play space at Jackson Park.

Thank you for considering this feedback from me and my 22 month old!

Best,
Jessica

Sent from my iPhone

From: [Bobbie V Centurion](#)
To: [Amy Wooldridge](#)
Subject: Jackson Pak
Date: Thursday, September 12, 2019 1:00:41 PM

*** **CAUTION:** This email message is coming from a non-City email address. Do not click links or open attachments unless you trust the sender and know the content is safe. Please contact the Help Desk with any questions. ***

Dear Amy,

I am unable to be at the meeting, but would like to share some thoughts about play structures to be considered for Jackson Park.

I am not in favor of installing any kind of play structure in Jackson Park.

I have lived at the corner of Park Ave. and San Jose for almost 30 years. I raised three daughters here and we enjoyed the park a lot.

I appreciate the open free-form play that I see so often in the park. Our park, the way it currently is, encourages children to use their imaginations in wonderful ways. Any group of parents, or teachers can use the park in an abundance of creative ways.

I also have concerns about our beautiful trees. A friend that lives near Longfellow Park told me that they lost a one hundred year old magnolia recently., and that part of the reason was the roots of the tree were negatively impacted by the compacted soil of a play structure on top of them.

Also, I am concerned that a play structure would invite more cars into the area. Parking is a constant issue for this neighborhood.

I would like to see Park and Rec funding go towards replacing the dangerous paths and improved lawn maintenance which keeps the grass from growing onto the paths.

Thank you for considering my ideas, and thank you for serving in public office.

Sincerely,

Bobbie V. Centurion
1201 Park Avenue
Alameda, CA 94501
(510) 865-9945

From: [Scott Grieder](#)
To: [Amy Wooldridge](#)
Cc: [Charlise Tiee](#)
Subject: In support of a Jackson Park functional play-space
Date: Wednesday, September 11, 2019 9:10:05 PM

*** CAUTION: This email message is coming from a non-City email address. Do not click links or open attachments unless you trust the sender and know the content is safe. Please contact the Help Desk with any questions. ***

Hello Amy,

As I will be unable to attend the hearing tomorrow night, I am writing you in support of a Jackson Park play-space.

My wife and I have lived in Alameda for over 10 years on Crist St. We always thought that Jackson Park was a picturesque looking place with a fine gazebo, but rarely had ever seen anyone put the space to any good use. To be honest, we mostly have just seen commuters waiting for buses there, teenage kids fighting after high school gets out and inebriated people passed out on the lawn.

Now that we have small children and frequent other parks across the Island, it seems even more of a shame that there's no dedicated area for young kids to play in. There are even signs up that say that bike riding in the park is not allowed. I think it's reasonable to think that the entire community could benefit from encouraging more walkable options for families with young children. Many of the homes in the area lack any real back yards to play in or are suited to outdoor play.

We'd like to see the Commissioners support hiring a landscape architect to create 2-3 conceptual designs for Jackson Park. We believe that we could end up with a beautiful functional play space there. I fear that many of us in our community are working parents of young children and are unable to turn up at these hearings. It's easy for us to be under represented especially given the times allotted for meetings on school nights.

Jackson Park is not the center piece of private, gated community. The park deserves to be more than a publicly funded and maintained front yard for houses along Park Ave. It's supposed to be a space for all of us to share.

We hope you support our neighborhood families and give us a chance to live and play closely with our neighbors.

Thanks for your consideration.

Sincerely,
Scott Grieder
2508 Crist St

From: Katy Dreyfuss
To: [Amy Wooldridge](#)
Subject: In Support of a Play Space at Jackson Park
Date: Tuesday, September 10, 2019 1:01:36 PM
Attachments: [ATT00001.htm](#)
[sig](#)
[ATT00002.htm](#)

*** **CAUTION:** This email message is coming from a non-City email address. Do not click links or open attachments unless you trust the sender and know the content is safe. Please contact the Help Desk with any questions. ***

Hi Amy,

My name is Katy Nasitka and I am an Alameda resident who lives .4 miles from Jackson Park. My kids are 7 and 10 years old. We often bike to Park Street and to friends' houses near Jackson Park. We enjoy biking under the trees through the park's open space. We would enjoy the park even more with a play space specifically designed for young children. I hope you will consider supporting the hire of a landscape architect who would create conceptual designs for a play space at Jackson Park.

Best,

Katy Nasitka

From: [Jaclyn Karnowski](#)
To: [Amy Wooldridge](#)
Subject: Jackson park for kids!!
Date: Thursday, September 12, 2019 9:50:06 AM

*** **CAUTION:** This email message is coming from a non-City email address. Do not click links or open attachments unless you trust the sender and know the content is safe. Please contact the Help Desk with any questions. ***

Hello,

Please note my support for a simple kids play structure at Jackson Park.

I'm all for a simple climb / swing structure. Please hire an architect and let's get this thing going!

I know it will reduce the drug activity in the park, it'll be a great reason to actually open and use the bathroom that exists. And, it'll be a catalyst for improving the walkway cement that is now quite dangerous for anyone walking the path.

Thanks!
Jaclyn Karnowski
2422 Webb Ave. Alameda

--

Jaclyn Karnowski

Consultant | Educator

810.444.0063 | jaclyn.karnowski@gmail.com
beautycounter.com/jaclynkarnowski



Our mission is to get safer products in the hands of everyone.



From: bmathieson@aol.com
To: [Amy Wooldridge](#)
Cc: klofkorn@comcast.net; dnowi@comcast.net
Subject: For Recreation and Park Commissioners -- September 12 Agenda Item 7c
Date: Monday, September 9, 2019 7:29:27 AM
Attachments: [Compilation of opposition comments 8-22-2019.pdf](#)

***** CAUTION:** This email message is coming from a non-City email address. Do not click links or open attachments unless you trust the sender and know the content is safe. Please contact the Help Desk with any questions. ***

Honorable Chair and Members of the Recreation and Park Commission:

I am a neighbor of Jackson Park and am looking forward to participating in your September 12, 2019, meeting. I appreciate the conclusion in the staff report that states, "Overall, it was clear that a playground is not necessary to fulfill the requested needs but rather a small natural play area and/or gathering space for families would suffice."

I would like to provide some additional context to the request for a playground in Jackson Park. Your May 9, 2019, recommendation to the City Council that a playground be constructed in Jackson Park was based on misleading information. The two Alameda residents who spoke at your May 9 meeting live in a neighborhood a few blocks from Jackson Park. One of them had conducted an online survey to gauge interest in a playground at the park and told you that the survey respondents were all in favor of a playground. That was not true; either the compilation of the survey results was flawed, or the speaker inaccurately summarized the results.

The input provided at the July 30, 2019, Community Meeting, which at least two of you kindly attended, included vast opposition to a playground by people who identified themselves as living in the immediate neighborhood of the park. In contrast, very few of the playground proponents identified where they live. Unfortunately, the sign-in sheet for the meeting included only names and e-mail addresses, with no record of where the meeting attendees live.

Speakers who stated that the closest playgrounds are a mile away are mistaken. Edison School, whose large, modern toddler and big-kid play structures are accessible to the public during non-school hours, is 0.6 mile from Jackson Park and 0.4 mile (an 8-minute walk) from the Crist Street homes of many of the pro-playground speakers. Lincoln Park is 0.7 mile from their homes, and Krusi Park is 0.8 mile from their homes. Those three existing playgrounds provide ample opportunities for climbing, swinging, and sliding on conventional play structures in a fenced environment.

The attached document is a compilation of comments that various Jackson Park neighbors emailed me about the proposal for a playground in the park. They provide more detail about neighborhood concerns than could be included in the compilation of input from the July 30 Community Meeting.

I look forward to hearing the discussion at your meeting this Thursday. I hope that your recommendation will be compatible with Jackson Park's uniquely valuable character as a place of peaceful respite, for all Alameda children and adults, from the hectic aspects of urban life.

Sincerely,

Betsy (and Scott) Mathieson
1185 Park Avenue
(510) 523-5852

From: [Rachel Wilson](#)
To: [Amy Wooldridge](#)
Subject: In support of a playground at Jackson Park
Date: Monday, September 9, 2019 1:34:49 PM

*** **CAUTION:** This email message is coming from a non-City email address. Do not click links or open attachments unless you trust the sender and know the content is safe. Please contact the Help Desk with any questions. ***

Dear Ms. Wooldridge,

I would like to see the Commissioners support hiring a landscape architect to create 2-3 conceptual designs so we end up with a beautiful functional play space at Jackson Park.

My kids and I regularly walk and bike to the Park Street/Park Avenue area from our house on the East End. I know my kids would really enjoy a play area that makes Jackson Park feel more friendly to children.

Thank you,
Rachel Wilson
1205 Post St, Alameda, CA 94501

From: [Cassandra Cook](#)
To: [Amy Wooldridge](#)
Subject: Jackson Park proposal
Date: Wednesday, September 11, 2019 7:16:18 PM

*** **CAUTION:** This email message is coming from a non-City email address. Do not click links or open attachments unless you trust the sender and know the content is safe. Please contact the Help Desk with any questions. ***

Hi Amy,

My name is Cassandra Lee, a mother of two and resident of Alameda. I am writing in regards to the proposed play area for Jackson Park. I understand that there has been opposition to the park and wanted to voice my opinion and wholehearted approval ahead of the City Hall discussion. Unfortunately, due to the logistics of having two young children, it is difficult for me attend the meetings on the park proposal.

When I heard that there was a possibility of a new play structure for my children, and in such close proximity to our home and children's day care facility, my family and I were beyond elated. The parks that are close by are often crowded and I know that I speak for several families when I say that a new play area would be a godsend. I am in a Facebook community for 2016 (457 members) and 2018 (541 members) mothers and we are always looking for places to bring our children.

I understand that there are two options for building a new structure- preassembled or hiring an architect. Of course, I believe hiring an architect would increase the value of the park - in attendance and aesthetics, much like the grandeur of the new Sweeney Open Space. Nonetheless, I honestly would be grateful for any play structure! My specific request would be to include a structure accessible for younger children.

Since I have moved to Alameda, nearly 10 years ago, the city has exploded with new life. I see more and more young families moving here and growing. I know that this park would be a gift that would keep giving to the community for generations to come.

Thank you for reviewing and considering the proposal for the park, and for reading my email.

Best,
Cassandra
The Lee Family

From: [Harrison Riley](#)
To: [Amy Wooldridge](#)
Subject: Jackson Park
Date: Monday, September 9, 2019 10:09:04 AM

*** **CAUTION:** This email message is coming from a non-City email address. Do not click links or open attachments unless you trust the sender and know the content is safe. Please contact the Help Desk with any questions. ***

Hi Amy,

I'd like to see the Commissioners support hiring a landscape architect to create 2-3 conceptual designs so we end up with a beautiful functional play space at Jackson Park.

Thanks,
Harrison

From: [Karen Larsen](#)
To: [Amy Wooldridge](#)
Subject: Jackson Park
Date: Thursday, September 12, 2019 10:14:32 AM

*** CAUTION: This email message is coming from a non-City email address. Do not click links or open attachments unless you trust the sender and know the content is safe. Please contact the Help Desk with any questions. ***

Hello Amy,

I hope to be able to attend the meeting tonight and add my opposition to adding a playground Jackson Park.

Before moving forward with adding a playground I think it is important to keep the commitment made many years ago to spend money on repair and upkeep. It is particularly important to have a long range plan to replace trees with finite lives. I am afraid there will eventually be a wholesale removal of trees changing the character and object of the Park.

I know the funds slated for the play area do not come from the maintenance budget. All the more reason for those who have been waiting for appropriate upkeep and repair to be upset with the playground decision. I sent an email in early July to your department asking when the giant stump left after the latest tree was taken down would be removed and replaced. Since there was a sign placed by ARPD on the stump advising that this was going to happen I wanted to know when. I did not receive a reply.

I was there the day an ARPD employee dropped by the Park, met a fellow, and pointed to the tree that was subsequently removed. No notice was given to anyone. On the same day the tree was removed. While the tree may have needed to be removed, it was in the same condition on that day as it had been for years.

I hope you will forgive my cynicism, but I think that the tree was removed to make way for a play area about which no appropriate public input effort was undertaken.

I do understand that parents want to have areas for their children to play. Jackson Park is already being used for that purpose. There just aren't play structures.

In an earlier email to you I suggested that a ring of benches might be appropriate. Parents could watch the children and get to know one another.

Thank you for your time and any effort you undertake to insure that money is directed appropriately.

Best Regards

Karen Larsen
1206 Park Avenue.
Sent from my iPhone

From: [Dianne Woon](#)
To: [Amy Wooldridge](#)
Subject: Jackson Park play structure
Date: Tuesday, September 10, 2019 7:46:24 PM

***** CAUTION:** This email message is coming from a non-City email address. Do not click links or open attachments unless you trust the sender and know the content is safe. Please contact the Help Desk with any questions. ***

Hi, Amy,

Since both me and my husband have to attend a school function for our daughter, we won't be able to attend September 12 meeting. But we would like to express that we do not support building any play structure in Jackson Park. When we moved here, our children were small and they were able to enjoy using their own creativity to play at the park. Whenever we felt that it is needed, we will take them to other close by park with play structure. I have been a stay home mom and a working mom full time as we raise our kids.

Also, since the park is so close to Encinal, it is a high risk to little ones and if you put a fence around the play structure, it will completely ruin the natural decor as we have been provided by the mother nature.

Last but not least, we find that any structure is a natural attractive to people to hang out especially dusk and after. Most people who support the play structure lives 1-2 blocks away from it, therefore they never have to deal with calling APD as there are people gathering when they should not already. Play structure will make it even easier, just like the bench at the end of the park, because they will have a place to rest and hang out and play.

Therefore, we respectfully oppose to have any play structure on Jackson Park. Instead, we respectfully request to have the sidewalks around the park to be paved so there is no tripping hazard.

Thanks,
Jason & Dianne Woon
1254 Park Ave

From: [Louise Van Geffen](#)
To: [Amy Wooldridge](#)
Subject: Fwd: Jackson Park meeting this evening
Date: Thursday, September 12, 2019 9:33:00 AM

*** **CAUTION:** This email message is coming from a non-City email address. Do not click links or open attachments unless you trust the sender and know the content is safe. Please contact the Help Desk with any questions. ***

Dear Amy,

I will be unable to attend the hearing tomorrow night, however I would like to voice my support for a Jackson Park play-space.

My family and I have lived on Park Avenue in Alameda for 7 years. We always thought that Jackson Park was a picturesque looking place with a fine gazebo, but rarely had ever seen anyone put the space to any good use. To be honest, we mostly have just seen commuters waiting for buses there, teenage kids fighting after high school gets out and inebriated people passed out on the lawn.

Now that we have small children and frequent other parks across the Island, it seems even more of a shame that there's no dedicated area for young kids to play in. There are even signs up that say that bike riding in the park is not allowed. I think it's reasonable to think that the entire community could benefit from encouraging more walkable options for families with young children. Many of the homes in the area lack any real back yards to play in or are suited to outdoor play.

We'd like to see the Commissioners support hiring a landscape architect to create 2-3 conceptual designs for Jackson Park. We believe that we could end up with a beautiful functional play space there. I fear that many of us in our community are working parents of young children and are unable to turn up at these hearings. It's easy for us to be under represented especially given the times allotted for meetings on school nights.

Jackson Park is not the center piece of private, gated community. The park deserves to be more than a publicly funded and maintained front yard for houses along Park Ave. It's supposed to be a space for all of us to share.

We hope you support our neighborhood families and give us a chance to live and play closely with our neighbors.

Thanks for your consideration.

Louise Van Geffen

From: [Kate Fayngersh](#)
To: [Amy Wooldridge](#)
Subject: Jackson Park Playground
Date: Monday, September 9, 2019 12:44:14 AM

*** CAUTION: This email message is coming from a non-City email address. Do not click links or open attachments unless you trust the sender and know the content is safe. Please contact the Help Desk with any questions. ***

Hi Amy,

My family and I recently purchased a home in Alameda, one block away from the beautiful Jackson Park. I am writing to you in support of the proposed playground, since I have two small children and attending support meetings in person is difficult due to the timing happening during or after bedtime.

I would like to see the Commissioners' support hiring a landscape architect to create a couple of designs so we can end up with a beautiful and functional play space at Jackson Park that the entire community can agree upon. At the last meeting, the concept designs that were shared were beautiful, natural, and a tasteful size that took into account the size of the park without creating an eye sore or attracting people who would drive/park cars in the area. Such a play area would be wonderful and even those opposed recognized that something like that would be tasteful and agreeable.

Please let me know if you have any questions or if I can reach out to anyone else to offer support for this effort.

I appreciate your help with this!
Kate Fayngersh
415-902-6446

From: [Nalani N](#)
To: [Amy Wooldridge](#)
Subject: Jackson Park Playground
Date: Sunday, September 8, 2019 10:36:34 PM

*** **CAUTION:** This email message is coming from a non-City email address. Do not click links or open attachments unless you trust the sender and know the content is safe. Please contact the Help Desk with any questions. ***

Dear Amy,

I'm writing because I'm hoping to see the Commissioners support hiring a landscape architect to create 2-3 conceptual designs so we end up with a beautiful functional play space at Jackson Park. Every time I'm at Jackson Park I think it's such a pity there isn't a playground, the park has so much unrealized potential as a public space.

Thank you!

Nalani Warde

From: [Jennifer Zimmermann](#)
To: [Amy Wooldridge](#)
Subject: Jackson park playground
Date: Monday, September 9, 2019 8:48:26 PM

*** CAUTION: This email message is coming from a non-City email address. Do not click links or open attachments unless you trust the sender and know the content is safe. Please contact the Help Desk with any questions. ***

Hi Amy,

I am a local alameda resident with a three year old. I wanted to reach out because I understand from Ron Limoges the last meeting there was opposition to the proposed park.

I have been unable to attend any meetings due to work and lack of baby sitters but I fully support the need for some type of playground at Jackson park.

I understand the next step should be hiring a landscape architect to create 2-3 conceptual designs so we end up with a beautiful functional play space.

Please ensure this is moved forward

We appreciate the work

Jennifer, Jethro and Jax Zimmermann

From: [Sean P. Scanlon](#)
To: [Amy Wooldridge](#)
Subject: Jackson Park Playground
Date: Monday, September 9, 2019 7:32:33 AM

*** **CAUTION:** This email message is coming from a non-City email address. Do not click links or open attachments unless you trust the sender and know the content is safe. Please contact the Help Desk with any questions. ***

Hi Amy --

I am unable to attend the Recreation and Park Commission's meeting on Thursday regarding the proposed Jackson Park playground, but would like to put forward my support for the Commission to hire a landscape architect to create 2-3 conceptual designs for a small gathering space/natural play area.

Thank you for all of your thoughtful attention to this potential project.

Regards,
Sean Scanlon
943 Park St.

From: [Montgomery, Angelina](#)
To: [Amy Wooldridge](#)
Subject: Re: Jackson Park
Date: Thursday, September 12, 2019 9:47:58 AM
Attachments: [image001.png](#)
[image003.png](#)

*** **CAUTION:** This email message is coming from a non-City email address. Do not click links or open attachments unless you trust the sender and know the content is safe. Please contact the Help Desk with any questions. ***

Hi Amy,

I am unable to attend the meeting tonight and wanted to send my response to you directly. I have a little 2 year old and am an Alameda resident. We've owned our home in Alameda for a few years and have been renters here for years. I would like to support the city to build the play area at Jackson Park. As a new parent we're always looking for new places to take our child to play, and new ways to engage with our community. Having this new small park would be an excellent way to build community for families in Alameda, especially at Jackson Park!

Thanks for your time and consideration.

Angelina Montgomery, MPH
Help Me Grow Prevention Manager
First 5 Alameda County
1115 Atlantic Ave, Alameda, CA 94501
510-227-6943
angel.montgomery@first5alameda.org
www.First5Alameda.org

FIRST 5



Newsletter

Alameda **KIDS**.org

CONFIDENTIALITY NOTICE: This electronic mail transmission may contain privileged and/or confidential information for use only by the intended recipients. Any use, distribution, copying or disclosure by any person, other than the intended recipients is strictly prohibited and may be subject to civil action and/or penalties. If you receive this transmission in error, please notify the sender by reply e-mail or by telephone and delete the transmission. Thank you.

From: [Claire Mathieson](#)
To: [Amy Wooldridge](#)
Subject: Please Forward to Recreation and Park Commissioners for 9/12 Agenda Item 7c
Date: Wednesday, September 11, 2019 4:09:38 PM

***** CAUTION:** This email message is coming from a non-City email address. Do not click links or open attachments unless you trust the sender and know the content is safe. Please contact the Help Desk with any questions. ***

Dear Commissioners,

My name is Claire Mathieson, and I have been a resident of Park Avenue since 2000, when I was a student at Otis Elementary School. I love Jackson Park because it is such a free, open space; each day the park has many different kinds of visitors, and they are each able to use its blank green canvas to make it their own.

When I was a child here, we did not have a playground, but we did not miss one either; we loved making up our own games. I have no significant childhood memories of playing on playgrounds; however, some of my favorite memories feature games that my friends and I invented – light stick tag, which my neighbors and I made up and played often in Jackson Park; concocting Harry Potter-esque potions from mud, grass, and leaves and using sticks as magic wands; drawing elaborate chalk obstacle courses on asphalt and spending days working through the challenges together. Jackson Park is a unique place, a park that doesn't prescribe a way for children to play but rather provides them with a perfect, natural, open space where they can bring their own imaginations together to create endless fun and enrichment in the present and wonderful memories for the future.

I think creativity is one of the most wondrous traits we have, and preserving natural, distraction-free places like Jackson Park is essential to nourish creative thinking in an age when so much of what we do is fed to us through screens. Last year I participated in a creativity retreat at Spirit Rock Meditation Center in Marin, and one of the teachers raised a point that really stuck with me. We seem to have so many options now, with endless apps and gadgets at our fingertips. However, the teacher said, all of those things are part of a "menu" that offers us a large – but limited and prescribed – set of choices. What's most precious, most overlooked, and most worth seeking out is what's not on the menu, what we find or create for ourselves beyond the list of choices – like chalk maps and potions whose recipes only my friends and I know. For me, Jackson Park as a wide, green, some-might-say plain open space is the world beyond the menu, a world that we can make our own, a world in which children don't automatically find themselves climbing on a play structure made for them by adults but rather create a different play structure every day, every minute – one that is constantly in flux, a marvelous combination of the natural world and their own awesome imaginations.

I hope that the children of this neighborhood will continue to have the same opportunities I had to use their inborn creativity to forge bonds with each other, with the natural world, and with their future selves, who – if my own experience is anything to go by – will treasure the precious memories of the time when their friends wielded lightsabers and wizards hid behind trees.

Sincerely,
Claire Mathieson

From: [Ashley Lorden](#)
To: [Amy Wooldridge](#)
Subject: Jackson Park playspace
Date: Monday, September 9, 2019 9:57:38 AM

*** **CAUTION:** This email message is coming from a non-City email address. Do not click links or open attachments unless you trust the sender and know the content is safe. Please contact the Help Desk with any questions. ***

Hello,

I believe you are working on the next step for the Jackson Park playspace project, getting a few design options so Recreation and Parks and the community can form a plan. I strongly support this project; as someone who lives nearby, I don't use this park nearly as much as other parks (which are farther away from me) because I worry it's not a safe place for my children. I really like the idea of constructing a play area for children that is designed to feel like a natural part of this historic park, using earth tones and organic materials wherever possible. This would help the park get a lot more use by neighborhood families, which can make it safer for everyone.

Thank you for your work on this project!
Ashley Lorden

From: [Kasimira Riley](#)
To: [Amy Wooldridge](#)
Subject: Jackson Park
Date: Monday, September 9, 2019 10:15:14 AM

*** **CAUTION:** This email message is coming from a non-City email address. Do not click links or open attachments unless you trust the sender and know the content is safe. Please contact the Help Desk with any questions. ***

Hi Amy,

I'm writing you to let you know of my support for building a small play space for children in Jackson park. I am in full support of hiring a landscape architect to create conceptual designs so we end up with a beautiful functional play space at Jackson Park.

As live just a few blocks away from Jackson park and have a 8 month old who would love to have a park and playground close by where he can be out in nature and interacting with other kids, I think the addition of a park would be a tremendous value add to the culture of the community.

I think it is incredibly important to invest in the future of our community, and that is where I look to the city to take care of the best interests of our children. I hope to have your support!

Kasi

From: [J.J. Navarro](#)
To: [Amy Wooldridge](#)
Cc: [Sarah Henry](#)
Subject: Re: Jackson Park agenda item on Recreation and Parks Commission 9/12/19
Date: Thursday, September 5, 2019 2:16:12 PM

*** **CAUTION:** This email message is coming from a non-City email address. Do not click links or open attachments unless you trust the sender and know the content is safe. Please contact the Help Desk with any questions. ***

Hi Amy -
Thanks for your email.

I will be out of town on the 12th and unable to attend the meeting.

As I've expressed in council chambers on two occasions, and during the neighborhood meeting you hosted, I am very much in favor of building a tasteful, natural-looking play structure in Jackson Park. In my view, it will go a long way to bring our community together, deter the undesirable loitering and drug activity that the park is known for, and provide a much needed play structure for nearby families.

Thank you for passing along my comments to the commissioners.

-J.J. Navarro

J.J. Navarro
jjnavarro@gmail.com
m. 415-515-2259

On Thu, Sep 5, 2019 at 10:29 AM Amy Wooldridge <AWooldridge@alamedaca.gov> wrote:

Hello Jackson Park neighbors,

This is to inform you that the Recreation and Parks Commission will be discussing the option of a play area at Jackson Park on Thursday, September 12, 2019 at City Hall, Council Chambers on the third floor. It is also televised. The meeting starts at 7:00pm.

The staff report and attachments are available on the city's website [here](#). Just choose the Recreation and Parks Commission from the drop down menu and then click on the 9/12/2019 agenda. The blue hyperlinks on the agenda will take you to the staff report and attachments.

Three options are being presented to the Commission for them to provide direction to staff. These options include 1) hiring a landscape architect to create 2-3 conceptual designs for a

From: [Yu-Yee Wu](#)
To: [Amy Wooldridge](#)
Subject: Re: Jackson Park agenda item on Recreation and Parks Commission 9/12/19
Date: Thursday, September 5, 2019 11:19:20 PM

*** **CAUTION:** This email message is coming from a non-City email address. Do not click links or open attachments unless you trust the sender and know the content is safe. Please contact the Help Desk with any questions. ***

Hi Amy,

Thank you so much for the email and update. I was at the first meeting at Jackson Park but could not stay the whole time. I ask that the Commission support options 1 or 3 to have an appropriate sized natural playground integrated into Jackson Park, ideally including a small swing structure.

I believe that having a small playground for the growing number of families nearby is in line with and supportive of the population changes and growth in Alameda. A small playground will not totally change the character of the park, which spans two blocks, one block of which can stay as it is for those who don't want change to still enjoy if they don't want to be around kids. I don't see a small local playground becoming a destination point like the other bigger and fancier playgrounds, but will serve to be a delight and resource for families like mine who live nearby who would like to walk to the park with their kids and give them a playground where they can be more active. Because of its close proximity to all the restaurants and shops on Park St, it will also be a nicer place to walk to after spending time on Park St and would help kids get out more of their energy before going home. I ask that the Commission vote for a small playground in Jackson Park to support the growing number of families who live nearby now and in the future.

Thank you!
Yu-Yee Wu

On Sep 5, 2019, at 10:29 AM, Amy Wooldridge <AWooldridge@alamedaca.gov> wrote:

Hello Jackson Park neighbors,

This is to inform you that the Recreation and Parks Commission will be discussing the option of a play area at Jackson Park on Thursday, September 12, 2019 at City Hall, Council Chambers on the third floor. It is also televised. The meeting starts at 7:00pm.

The staff report and attachments are available on the city's website [here](#). Just choose the Recreation and Parks Commission from the drop down menu and then click on the 9/12/2019 agenda. The blue hyperlinks on the agenda will take you to the staff report and attachments.

Three options are being presented to the Commission for them to provide direction to

From: helenpak49@yahoo.com
To: [Amy Wooldridge](#)
Cc: [KHINEOUN KONG](#)
Subject: Re: Jackson Park agenda item on Recreation and Parks Commission 9/12/19
Date: Monday, September 9, 2019 3:42:41 PM

*** **CAUTION:** This email message is coming from a non-City email address. Do not click links or open attachments unless you trust the sender and know the content is safe. Please contact the Help Desk with any questions. ***

Hi Amy,

I am unable to attend the meeting but I'd like to see the Commissioners support hiring a landscape architect to create 2-3 conceptual designs to create a beautiful functional play space at Jackson Park.

Thank you!

Helen & Khineoun Kong
2304 San Jose Ave
Alameda, CA
510-910-0763

Sent from my iPhone

On Sep 5, 2019, at 10:29 AM, Amy Wooldridge <AWooldridge@alamedaca.gov> wrote:

Hello Jackson Park neighbors,

This is to inform you that the Recreation and Parks Commission will be discussing the option of a play area at Jackson Park on Thursday, September 12, 2019 at City Hall, Council Chambers on the third floor. It is also televised. The meeting starts at 7:00pm.

The staff report and attachments are available on the city's website [here](#). Just choose the Recreation and Parks Commission from the drop down menu and then click on the 9/12/2019 agenda. The blue hyperlinks on the agenda will take you to the staff report and attachments.

Three options are being presented to the Commission for them to provide direction to staff. These options include 1) hiring a landscape architect to create 2-3 conceptual designs for a small gathering space/natural play area; 2) to leave the space as it is and not do a play area; 3) build a small natural play area/gathering space with pre-made components from a playground supplier that are natural looking components such as a climable rock or animal sculpture. All of the feedback from the neighborhood meeting is included as well as photo examples and options for a small landscape play area / gathering space.

From: [Danny Roosevelt](#)
To: [Amy Wooldridge](#)
Subject: voicing support for the Jackson Park playground project
Date: Monday, September 9, 2019 2:02:01 PM

*** **CAUTION:** This email message is coming from a non-City email address. Do not click links or open attachments unless you trust the sender and know the content is safe. Please contact the Help Desk with any questions. ***

Hi Amy, I wanted to make my voice heard and let you know my family and I strongly support the proposal to build a playground at Jackson Park and we've love to see the city hire a landscape architect to product 2-3 conceptual designs to help ensure the project is successful.

Please let me know if there's anything I can do to help!

- Danny Roosevelt (Broadway and Central Ave)

--

Danny Roosevelt
dannyroosevelt.com

