

# NEW COMMERCIAL BUILDING

## 1920 MINTURN STREET

### ALAMEDA CA 94501

#### GENERAL NOTES:

- ALL WORK AND MATERIALS SHALL BE IN ACCORDANCE WITH THE APPLICABLE RULES AND REGULATIONS OF STATE AND/OR LOCAL CODES, LAWS, ORDINANCES, STATUTES AND REGULATIONS. NOTHING IN THE DRAWINGS IS TO BE CONSTRUED AS REQUIRING OR PERMITTING WORK CONTRARY TO THESE APPLICABLE RULES, REGULATIONS AND CODES.
- THESE NOTES ARE INTENDED AS A GUIDE TO THE CONSTRUCTION REQUIREMENTS ESTABLISHED FOR THIS PROJECT. NO CONTRACTOR SHOULD ATTEMPT TO DESIGN, BID OR CONSTRUCT ANY PORTION OF THE WORK HEIRIN WITHOUT FULL UNDERSTANDING OF THE DESIGN INTENT AND APPLICABLE CODE REQUIREMENTS. THE CONTRACTOR SHOULD OBTAIN CLARIFICATION FROM THE ARCHITECT IF HE IS UNCERTAIN OF DESIGN INTENT.
- THE DESIGN PRESENTED ON THESE DRAWINGS ESTABLISHES THE GENERAL ARCHITECTURAL REQUIREMENTS FOR THE PROJECT. IT DOES NOT PRESENT ALL DETAILS REQUIRED FOR CONSTRUCTION. THE CONTRACTOR IS EXPECTED TO EXEROISE SOUND JUDGEMENT IN ACCORDANCE WITH CODE REQUIREMENTS.
- THE DRAWINGS INDICATE LOCATION, DIMENSIONS, AND TYPICAL DETAILS OF CONSTRUCTION. FEATURES OF CONSTRUCTION SHOWN ARE TYPICAL AND APPLY GENERALLY FOR SIMILAR CONDITIONS. THE DRAWINGS DO NOT ILLUSTRATE EVERY CONDITION. IN THE EVENT THAT CERTAIN FEATURES ARE NOT FULLY SHOWN ON THE DRAWINGS OR CALLED FOR IN THE SPECIFICATIONS, THEIR CONSTRUCTION SHALL BE (A) OF THE SAME CHARACTER AS SHOWN FOR SIMILAR CONDITIONS; OR (B) IN ACCORD WITH CONVENTIONAL PRACTICES OF THE CBC; OR (C) AS CLARIFIED BY THR ARCHITECT. WHERE DISCREPANCIES OCCUR, THEY SHALL BE REPORTED TO THE ARCHITECT FOR RESOLUTION.
- NO ONE DRAWING OR SPECIFICATION SECTION SHALL "GOVERN". CONTRACTOR SHALL CORRELATE WORK BETWEEN ARCHITECTURAL DRAWINGS AND SPECIFICATIONS AND CONSULTANT DRAWINGS AND SPECIFICATIONS. CONTRACTOR SHALL ALSO CORRELATE WORK BETWEEN DRAWINGS OF DIFFERENT SCALES WITHIN EACH SECTION. IT IS THE EXPLOIT AND SPECIFIC RESPONSIBILITY OF THE CONTRACTOR TO EXAMINE THE CONTRACT DOCUMENTS IN THEIR ENTIRETY, REPORT ALL DISCREPANCIES ENCOUNTERED THEREIN TO THE ARCHITECT AND AWAIT RESOLUTION BEFORE PROCEEDING WITH ANY WORK AFFECTED BY SUCH DISCREPANCIES.
- UNLESS SHOWN OTHERWISE, DETAILS SHOWN AS "TYPICAL" APPLY WHEREVER APPROPRIATE. SPECIFIC DETAILS TAKE PRECEDENCE OVER "TYPICAL" DETAILS. SPECIFIC NOTES ON DRAWINGS TAKE PRECEDENCE OVER GENERAL NOTES.
- DIMENSIONS MARKED "VERIFY" ARE TO BE CHECKED FOR ACCURACY BY THE CONTRACTOR AND ALL DISCREPANCIES ARE TO BE BROUGHT TO THE ATTENTION OF THE ARCHITECT BEFORE PROCEEDING.
- EXISTING SITE AND CONSTRUCTION INFORMATION IS BASED ON ORIGINAL DRAWINGS BY DEPARTMENT OF NAVY DRAWING #7429 FILMED 3/7/88
- THE CONTRACTOR SHALL CAREFULLY STUDY AND COMPARE THE ARCHITECTURAL CONTRACT DOCUMENTS WITH THE STRUCTURAL DRAWINGS AS TO ALL LAYOUTS, DIMENSIONS, AND ELEVATIONS AND SHALL AT ONCE REPORT DISCOVERED ERRORS, INCONSISTENCIES, OR OMISSIONS TO THE ARCHITECT. IF THE CONTRACTOR PERFORMS ANY CONSTRUCTION ACTIVITY KNOWING IT INVOLVES A RECOGNIZED ERROR, INCONSISTENCY OR OMISSION IN TH CONTRACT DOCUMENTS WITHOUT SUCH NOTICE TO THE ARCHITECT, THE CONTRACTOR SHALL ASSUME APPROPRIATE RESPONSIBILITY FOR SUCH PERFORMANCE AND SHALL BEAR AN APPROPRIATE AMOUNT OF THE ATTRIBUTED COSTS FOR CORRECTION.
- DO NOT SCALE THE DRAWINGS. LAY OUT WORK FOLLOWING WRITTEN DIMENSIONS. IF WRITTEN DIMENSIONS ARE LACKING, NOTIFY THE ARCHITECT AT ONCE. WHERE DISCREPANCIES OCCUR, THEY SHALL BE REPORTED TO THE ARCHITECT FOR RESOLUTION.
- DIMENSIONS ARE GIVEN TO FACE OF FINISH UNLESS OTHERWISE NOTED ON THE DRAWINGS.
- THE CONTRACTOR SHALL BE DEEMED TO HAVE INSPECTED THE SITE AND VERIFIED ACTUAL GRADES, ELEVATIONS, DIMENSIONS, AND DECLUNATIONS AND THE TRUE CONDITIONS UNDER WHICH WORK IS TO BE PERFORMED. ANY DISCREPANCIES SHALL BE CALLED TO THE ATTENTION OFTHE ARCHITECT BEFORE PROCEEDING WITH THE WORK.
- ALL CONDITIONS AFFECTING WORK PROGRESS AND CONFORMANCE TO PLANS AND SPECIFICATIONS SHALL BE VERIFIED BY THE CONTRACTOR PRIOR TO START OF WORK.
- ANY SITE AND BUILDING AREAS UNAFFECTED BY THIS WORK SHALL BE PROTECTED FROM ANY DAMAGE CAUSED BY THIS WORK. ANY DAMAGE TO EXISTING STRUCTURES AND BUILDING ELEMENTS SO CALLED SHALL BE THE FINANCIAL RESPONSIBILITY OF THE CONTRACTOR.
- THE CONTRACTOR SHALL PATCH ALL AREAS OF EXISTING BUILDING WHICH ARE IN NEED OF SUCH WORK AS A RESULT OF DEMOLITION, INSTALLATION OF NEW ITEMS, OR NEW CONSTRUCTION.
- ANY WASTE AND REFUSE CAUSED BY THIS WORK SHALL BE REMOVED FROM THE PREMISES AND DISPOSED OF BY THE CONTRACTOR IN A LEGAL MANNER.
- INFORMATION SHOWN IN DRAWINGS REGARDING EXISTING CONSTRUCTION IS APPROXIMATE. CONTRACTOR SHALL SURVEY EXISTING CONDITIONS AND VERIFY DETAILED CHARACTERISTICS AFFECTING THE WORK OF THIS CONTRACT. ANY DISCREPANCIES SHALL BE CALLED TO THE ATTENTION OF THE ARCHITECT BEFORE PROCEEDING WITH THE WORK.
- EXIT DOOR HARDWARE SHALL BE OPENABLE FROM THE INSIDE WITHOUT THE USE OF A KEY OR ANY SPECIAL KNOWLEDGE OR EFFORT.
- BROOM CLEAN CONSTRUCTION PREMISES AT THE END OF EACH DAY AND FINAL CLEANING TO INCLUDE EXISTING WINDOWS AND MINIBLINDS AT THE END OF THE JOB.
- MATERIALS, ASSEMBLIES AND SYSTEMS SHOWN ARE NEW UNLESS NOTES AS EXISTING OR (E).

#### ABBREVIATIONS:

NOTE: ALL ABBREVIATIONS MAY NOT BE USED.

A.D.	AREA DRAIN	M.B.	MACHINE BOLT
ADJ.	ADJACENT/ADJUSTABLE	MET.	METAL
A.F.F.	ABOVE FINISHED FLOOR	M.R.	MOISTURE RESISTANT
BLDG.	BUILDING	MTD.	MOUNTED
CAB.	CABINET	MTG.	MOUNTING
CBC	CALIFORNIA BUILDING CODE (TITLE 24)	(N)	NEW
CL	CENTERLINE	NTS	NOT TO SCALE
C.O.	CLEAN OUT	O.C.	ON CENTER
CLR.	CLEAR	O.D.	OUTSIDE DIAMETER
CONC.	CONCRETE	OPN'G	OPENING
DIA.	DIAMETER	PLWD.	PLYWOOD
D.F.	DOUGLAS FIR	PNTD.	PAINTED
DN.	DOWN	P.T.	PRESSURE TREATED
DWG.	DRAWING	R.	RADIUS
DWR.	DRAWER	R.D.	ROOF DRAIN
EA.	EACH	REF.	REFRIGERATOR
EL.	ELEVATION	REQ'D.	REQUIRED
(E)	EXISTING	R.O.	ROUGH OPENING
EXT.	EXTERIOR	S.A.D.	SEE ARCHITECTURAL DRAWINGS
F.D.	FLOOR DRAIN	S.E.D.	SEE ELECTRICAL DRAWINGS
GALV.	GALVANIZED	S.F.	SQUARE FEET
GA.	GAGE	SHT.	SHEET
GFRP	GYPSP FIBER REINFORCED PLASTER	SIM.	SIMILAR
		SMD	SEE MECHANICAL DRAWINGS
GYP. BD.	GYPSP WALL BOARD	SMS	SHEET METAL SCREW
ELECT.	ELECTRIC OR ELECTRICAL	SPD	SEE PLUMBING DRAWINGS
F.O.	FINISHED OPENING	S.S.	STAINLESS STEEL
F.T.	FIRE TREATED	SSD	SEE STRUCTURAL DRAWINGS
GSM	GALVANIZED SHEET METAL	STL	STEEL
HC	HANDICAPPED	TYP.	TYPICAL
HT.	HEIGHT	UBC	UNIFORM BUILDING CODE
I.D.	INSIDE DIAMETER	U.O.N.	UNLESS OTHERWISE NOTED
LAV	LAVATORY	V.I.F.	VERIFY IN FIELD
MANUF.	MANUFACTURER	W/	WITH
		W.C.	WATER CLOSET
		W.P.	WATER PROOF
		WRB	WATER RESISTANT BARRIER

#### SCOPE OF WORK:

- REMOVE EXISTING BUILDING OF 4847 SF.
- CONSTRUCT NEW COMMERCIAL BUILDING.

#### PROJECT DATA:

APPLICABLE CODES & REGULATIONS:  
ALL WORK SHALL BE PERFORMED TO THE FOLLOWING CODES:

CALIFORNIA BUILDING CODE	2016 EDITION
CALIFORNIA FIRE CODE	2016 EDITION
CALIFORNIA ADMINISTRATIVE CODE (T-24)	2016 EDITION
CALIFORNIA MECHANICAL CODE	2016 EDITION
CALIFORNIA PLUMBING CODE	2016 EDITION
CALIFORNIA ELECTRICAL CODE	2016 EDITION
CALIFORNIA ENERGY CODE	2016 EDITION
CITY OF ALAMEDA MUNICIPAL CODES	CURRENT EDITION

CONSTRUCTION TYPE: TYPE V SPRINKLERED

OCCUPANCY CLASSIFICATION: B OFFICE BUILDING

NUMBER OF STORIES 1 W/MEZZANINE

FLOOR AREA:	
NEW GROUND FLOOR:	8260 SF
MEZZANINE AREA:	2520 SF
TOTAL:	10780 SF

PARKING:	
OPEN PARKING:	15
EXISTING COVERED PARKING:	4
PROPOSED COVERED PARKING:	6
TOTAL:	25

BICYCLE PARKING (SEE SHT A2 FOR LOCATION)		
PARKING TYPE	REQUIRED #	PROPOSED #
SHORT-TERM	2	2
LONG-TERM	2	2

#### LOCATION MAP:



NORTH

#### DRAWING INDEX:

##### ARCHITECTURAL:

A-0	COVER SHEET
A-1	SITE PLAN
A-2	LANDSCAPE PLAN
A-2.1	BICYCLE LOCKER & RACK SPECIFICATIONS
A-3	BUILDING PLANS & SCHEDULES
A-4	REFLECTED CEILING PLANS & DETAILS
A-5	PROPOSED ELEVATIONS
A-5.1	SECTIONS
A-6	STREET VIEW ELEVATIONS

#### DEFERRED SUBMITTALS

- AUTOMATIC FIRE SPRINKLER SYSTEM AND FIRE ALARM MONITORING SYSTEM.

#### PROJECT ROSTER:

OWNER:  
LISTO PROPERTIES  
1925 UNION STREET  
ALAMEDA CA 94501

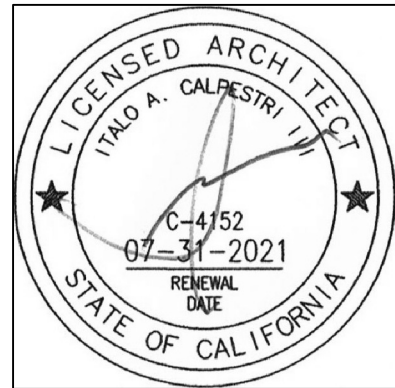
ARCHITECT:  
ITALO A. CALPESTRI III & ASSOCIATES  
220 COLUMBIA AVENUE  
KENSINGTON, CA 94708  
MOBILE: (510) 851-2387  
FAX: (510) 525-3140  
E CALPESTRI@SBCGLOBAL.NET

STRUCTURAL ENGINEER:  
BASELINE DESIGNS, INC.  
1700 OAK STREET  
ALAMEDA, CA 94501  
VOICE: (510) 865-4623  
FAX: (510) 865-4704

ITALO A. CALPESTRI III

& ASSOCIATES

220 COLUMBIA AVENUE  
KENSINGTON, CA 94708  
MOBILE: (510) 851-2387  
FAX: (510) 525-3140



OWNER:

STAMP:

REVISIONS:		
No.	DESCRIPTION	DATE
1	DESIGN REVIEW	2019-05-13
2	DESIGN REVIEW	2019-09-12
Δ	DESIGN REVIEW	2019-10-14

PROJECT  
NEW COMMERCIAL STRUCTURE  
1920 MINTURN STREET  
ALAMEDA, CA 94501

DRAWING TITLE

COVER SHEET

PROJECT No. : 201704LP

DRAWN BY: DH

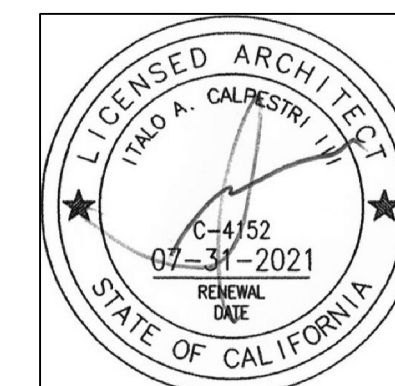
CHECKED BY: IAC

DATE:

SCALE: AS NOTED

SHEET NO.:

A-0



OWNER:

STAMP:

REVISIONS:		
No.	DESCRIPTION	DATE
1	DESIGN REVIEW	2019-05-13
2	DESIGN REVIEW	2019-09-12
1	DESIGN REVIEW	2019-10-14

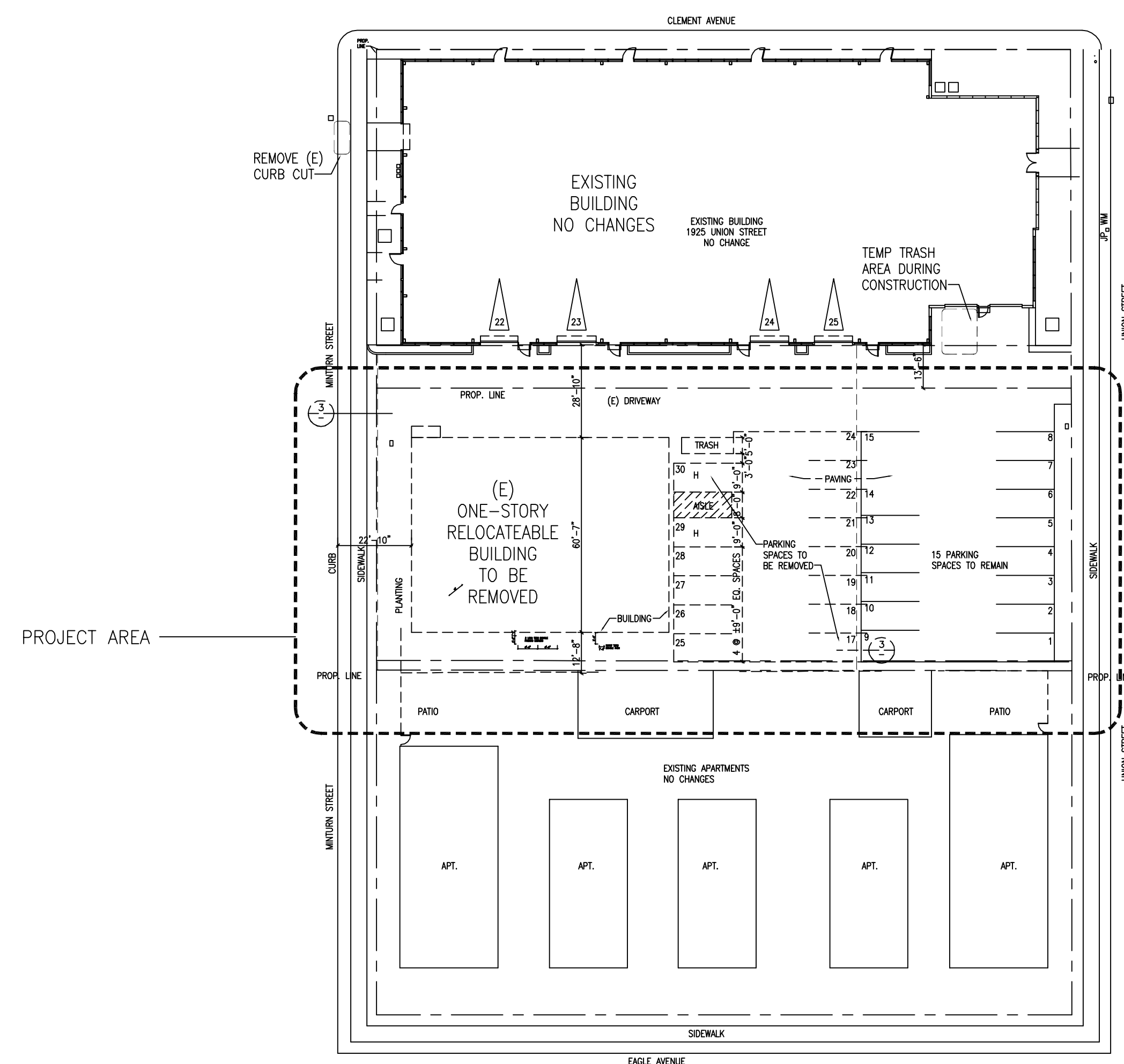
PROJECT  
NEW COMMERCIAL STRUCTURE  
1920 MINTURN STREET  
ALAMEDA, CA 94501

DRAWING TITLE  
SITE PLAN

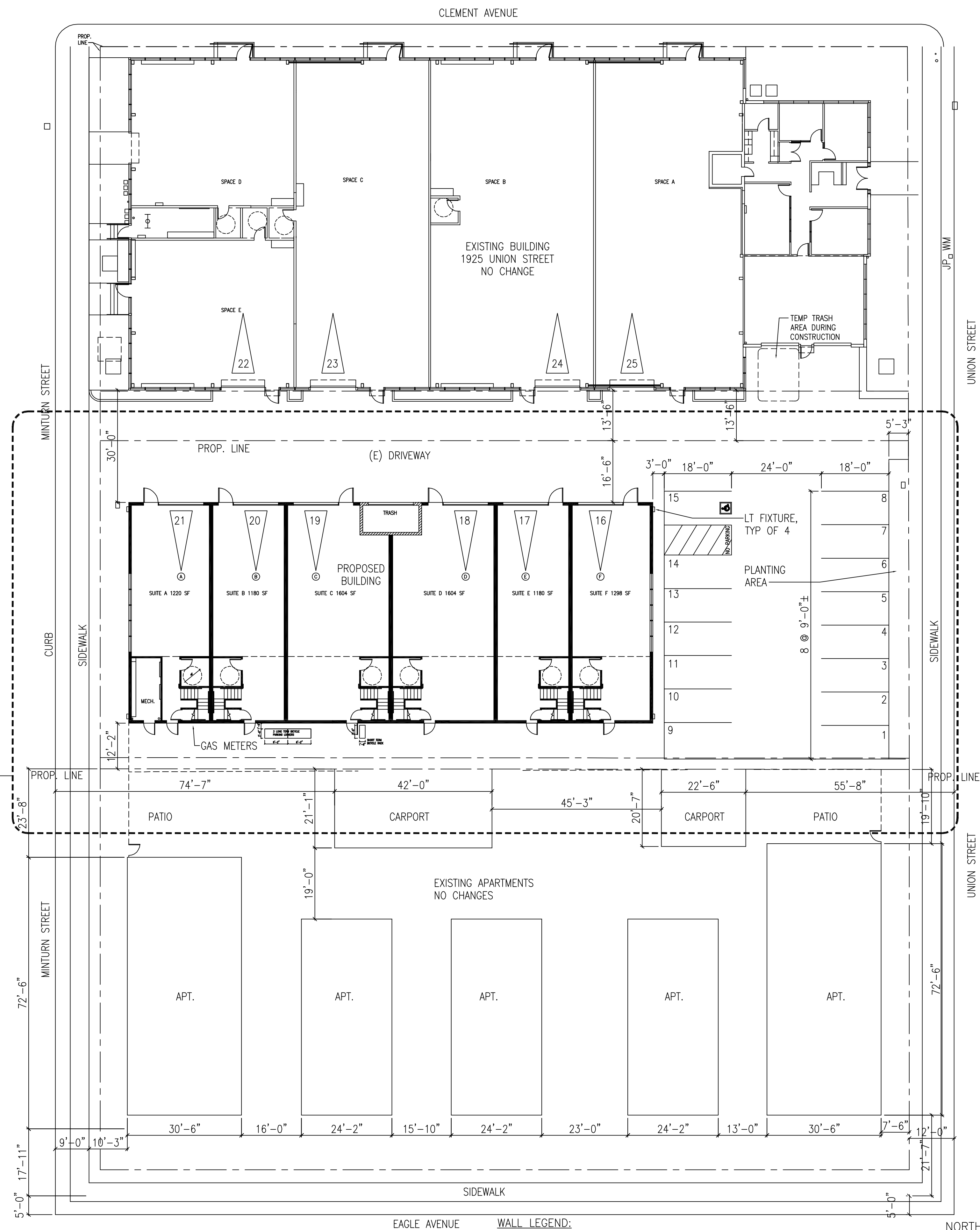
PROJECT No. :	201704LP
DRAWN BY:	DH
CHECKED BY:	IAC
DATE:	
SCALE:	AS NOTED

SHEET NO.:

A —


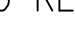





2 EXISTING SITE PLAN  
1/32"=1'-0"

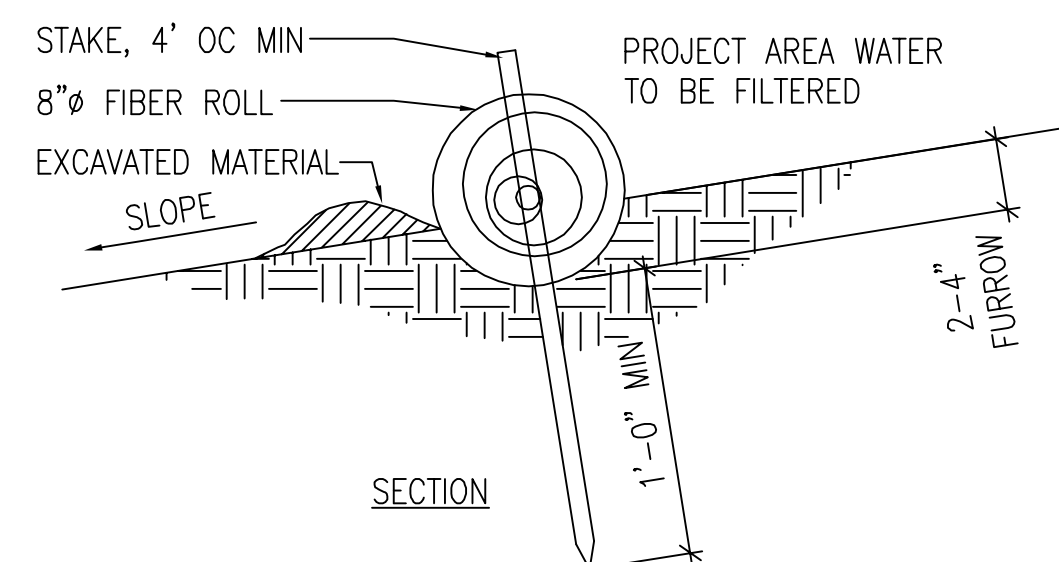


1 PROPOSED SITE PLAN  
1/16"=1'-0"

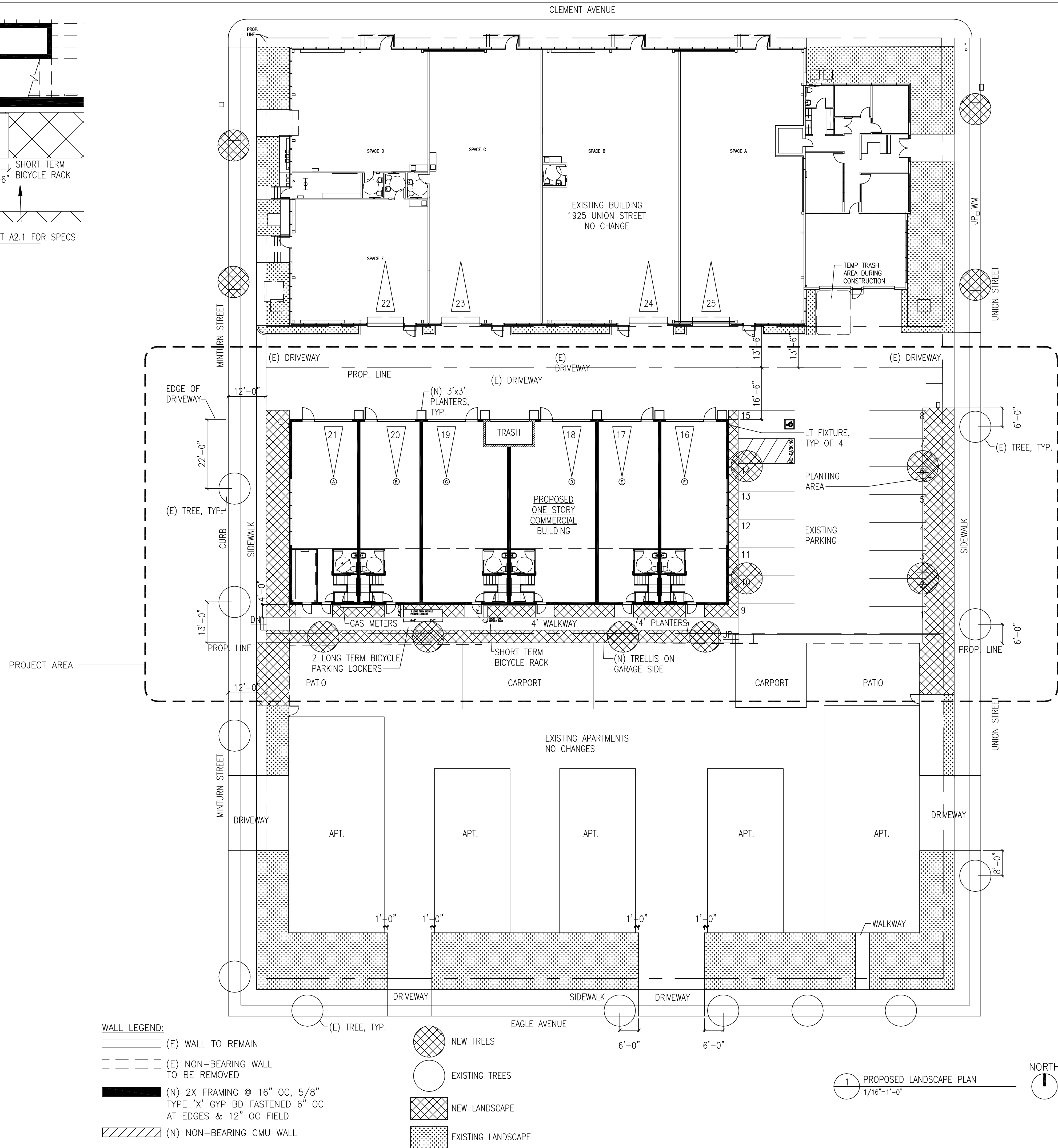
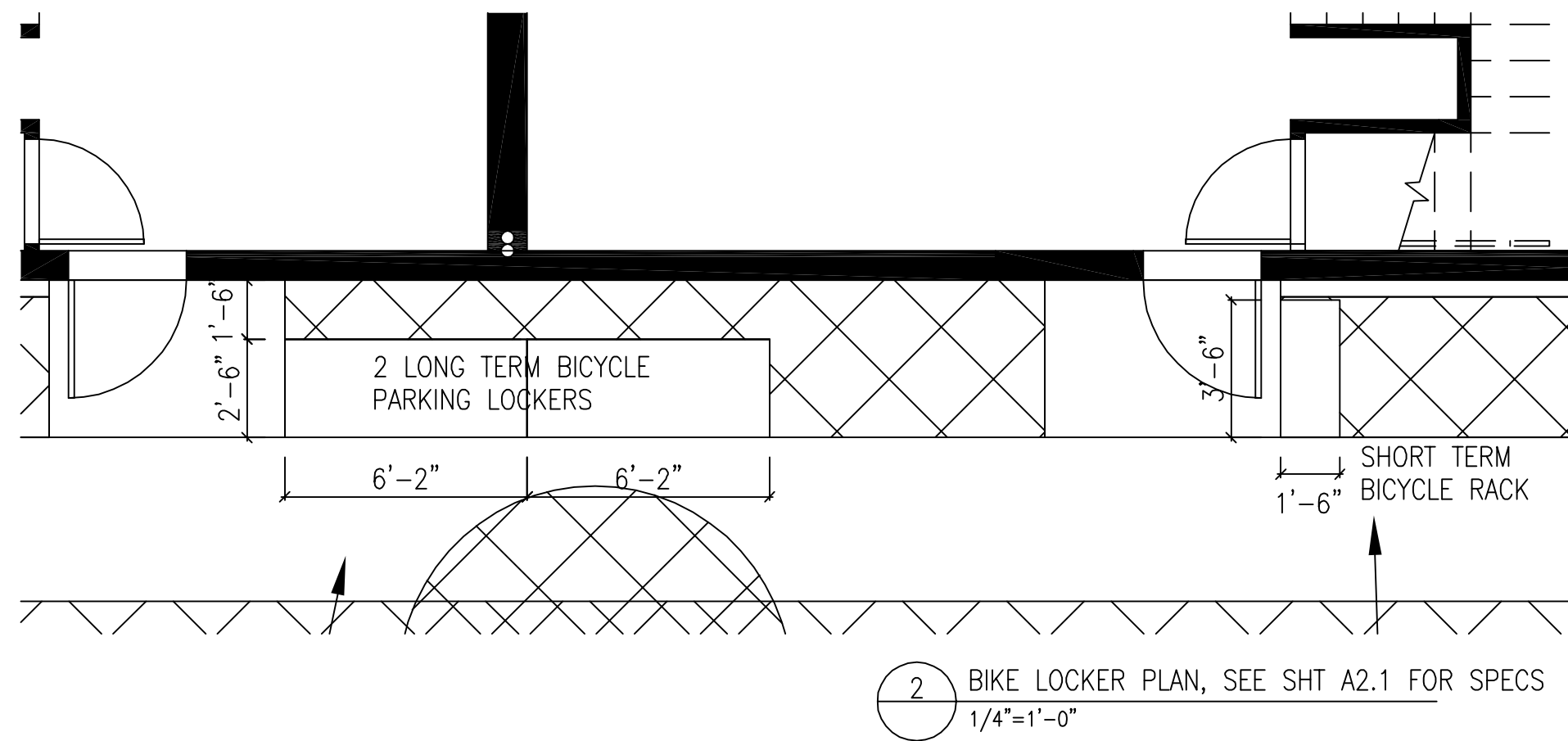
WALL LEGEND:

-  (E) WALL TO REMAIN
  PR 1/1
-  (E) NON-BEARING WALL TO BE REMOVED
-  (N) 2X FRAMING @ 16" OC, 5/8" TYPE 'X' GYP BD FASTENED 6" OC AT EDGES & 12" OC FIELD
-  (N) NON-BEARING CMU WALL

NORT

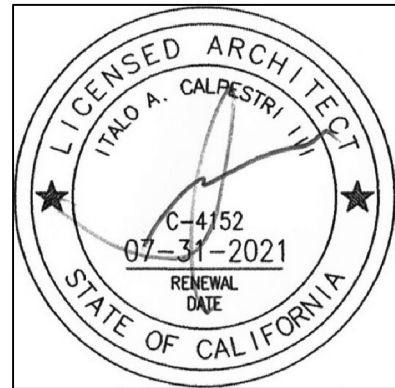
A simple compass rose with a circle and a vertical line through the center. The top of the line is labeled 'N' and the bottom is labeled 'S'.

3 FIBER ROLL WATER RUNOFF CONTROL  
1 1/2"=1'-0"



ITALO A. CALPESTRI III  
& ASSOCIATES

220 COLUMBIA AVENUE  
KENSINGTON, CA 94708  
MOBILE: (510) 851-2387  
FAX: (510) 525-3140



OWNER:

STAMP:

REVISIONS:	DESCRIPTION	DATE
1	DESIGN REVIEW	2019-05-13
2	DESIGN REVIEW	2019-09-12
Δ	DESIGN REVIEW	2019-10-14

PROJECT  
NEW COMMERCIAL STRUCTURE  
1920 MINTURN STREET  
ALAMEDA, CA 94501

DRAWING TITLE  
LANDSCAPE PLAN  
EXTERIOR LIGHTING

PROJECT No. : 201704LP  
DRAWN BY: DH  
CHECKED BY: IAC  
DATE:  
SCALE: AS NOTED

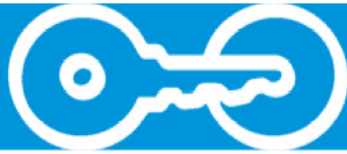
SHEET NO.:

A-2



## Cycle Stall Basic

Installation – Racks



### \*Tools Needed for Installation

- 9/16" socket set
  - (2) 4"x4"x28" (or larger) blocks
  - (4) bolts, nuts & washers for each rack.
- If using tamper resistant nuts, install two tamper-resistant & two standard nuts with each rack.*

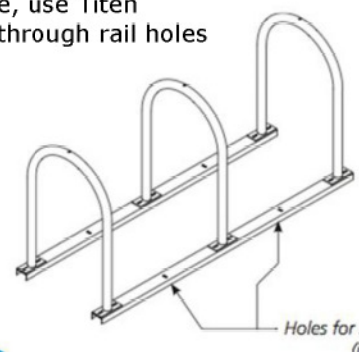
### Installation steps:

1. Lay out the two channel beams where the rack will be placed. Place both beams on top of the two blocks of wood so that the open part of the channel faces the ground.
2. Place racks on beams so holes in rack flanges line up with beam slots.
3. Put bolts through Hoop Rack flange holes & beams so bolt head faces up. HAND tighten the nuts using new flange nuts.
4. Once nuts are on, tip assembled rack over & use a 9/16" socket to tighten nuts. *Before tightening nuts, make sure the racks are straight on beams. If using tamper resistant nuts, use access tool to tighten nuts. Do not over tighten the tamper resistant nuts. Tip rack upright.*

### Anchoring Rails:

To anchor the rails to concrete, place 3.75" wedge anchor through holes in the rail into the concrete. Secure with nut.

If anchoring to asphalt surface, use Titen asphalt screws. Place screws through rail holes and turn into the asphalt.



Page 2 of 3

**American Bicycle Security Company**  
P.O. Box 7359  
Ventura, CA 93006  
Ph: (800) 245-3723 or (805) 933-3688  
Fax: (805) 933-1865  
[www.ameribike.com](http://www.ameribike.com)  
Email: [turtle@ameribike.com](mailto:turtle@ameribike.com)

## Cycle Stall Basic



One car or ten bikes? Maximize parking for customers at your business with on-street bike parking. The Cycle Stall Basic kit covers the needs of cities and businesses that want to provide an on-street bike corral at a low cost and minimal changes to infrastructure. Designed to fit within a standard size car parking space, the Cycle Stall Basic comes in standard single or double length kits, or can be customized to suit your needs. The bike racks may also be mounted to the rails at 45 degree angles.

**American Bicycle Security Company**  
P.O. Box 7359  
Ventura, CA 93006  
Ph: (800) 245-3723 or (805) 933-3688  
Fax: (805) 933-1865  
[www.ameribike.com](http://www.ameribike.com)  
Email: [turtle@ameribike.com](mailto:turtle@ameribike.com)

## Cycle Stall Basic

Installation – Wheel Stops & Delineators



### \*Tools Needed for Installation

- Hammer Drill with 3/8" masonry bit
- Socket Wrench 3/8"
- Hammer (if installing into concrete with wedge anchors)

### \*Site Safety:

Before installation, ensure work site is safe. If necessary, block off the area to prevent vehicle and pedestrian access. Use appropriate signage and work barricades to delineate the work area. Ensure electric power leads and hand tools are safe, in good working condition and only used as per manufacturer's specifications. Remove any potential trip hazards and use appropriate personal safety equipment (safety gloves, safety glasses, safety boots, etc.).

### Wheel Stop Installation:

1. Place wheel stop in desired location using setbacks diagram on page 2 as a guide. Mark holes onto surface and remove wheel stop.
2. Drill 3/8" holes through asphalt surface.
3. Line up holes in wheel stops with holes in road surface and use 3/8" socket wrench to secure the provided anchors.

### TRAFFIC DELINEATORS

Two 48" tall traffic delineators are included to protect your installation from damage by vehicles. Three delineators are included with the double-sized kit.

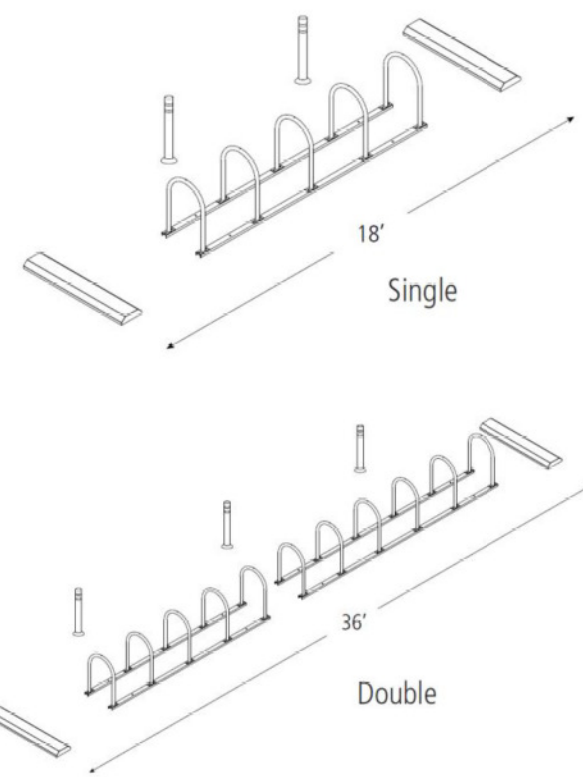
The delineators are secured to the ground with an epoxy cement and include two bands of reflective tape for greater visibility in low light.



**American Bicycle Security Company**  
P.O. Box 7359  
Ventura, CA 93006  
Ph: (800) 245-3723 or (805) 933-3688  
Fax: (805) 933-1865  
[www.ameribike.com](http://www.ameribike.com)  
Email: [turtle@ameribike.com](mailto:turtle@ameribike.com)

Page 3 of 3

## Cycle Stall Basic



**Product** Cycle Stall Basic  
**Capacity** Single: 10 Bikes  
Double: 22 Bikes

**Materials** Hoop Racks: 1.5" schedule 40 pipe (1.9" OD)  
Wheel Stops: Recycled plastic

**Finishes** Standard options: Galvanized Rails, Galvanized Racks Or Powder Coated Racks

RAL 9005	Flat Black	RAL 9003	RAL 2004	RAL 1023	Bright Yellow
RAL 6016	RAL 6018	RAL 6005	RAL 5005	RAL 5015	Purple
RAL 7011	RAL 7042	RAL 9007	RAL 1001	RAL 8014	Bronze
RAL 3003	RAL 3005				

Racks also available in PVC, Thermoplastic, or Stainless steel (depending on rack)

**Installation Methods** Rail mount - Hoop Racks are mounted to galvanized rails which should be anchored to the ground.

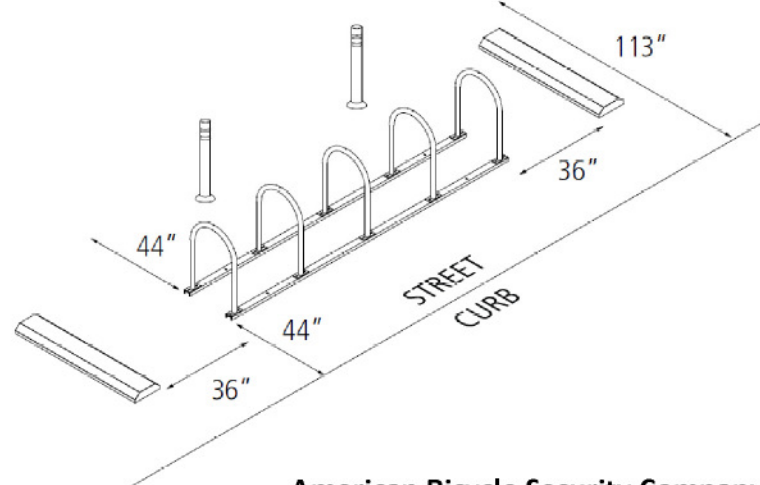
**Space Use & Setbacks** Curb Setbacks: Minimum: 44"

**Traffic Lane Setbacks:** Minimum: 44"

**Wheel Stop Setbacks:** Allow minimum of 36" between wheel stops and racks.



A variety of rack styles may be used to build your bike corral.



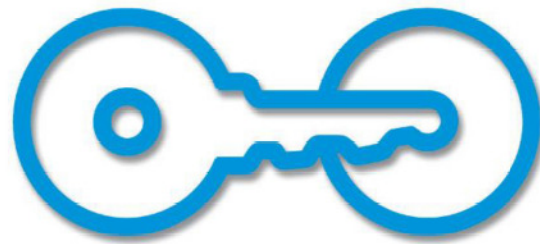
**American Bicycle Security Company**  
P.O. Box 7359  
Ventura, CA 93006  
Ph: (800) 245-3723 or (805) 933-3688  
Fax: (805) 933-1865  
[www.ameribike.com](http://www.ameribike.com)  
Email: [turtle@ameribike.com](mailto:turtle@ameribike.com)

Page 1 of 3

## Bike-Shell™ Model 351

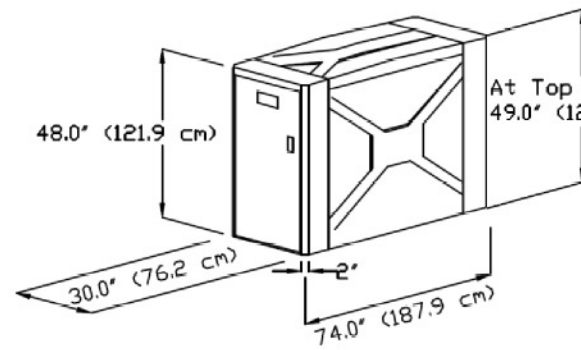


High security due to built-in door locks with concealed hinges. Locking bar from top to bottom of door.



**American Bicycle Security Company**  
P.O. Box 7359  
Ventura, CA 93006  
Ph: (800) 245-3723 or (805) 933-3688  
Fax: (805) 933-1865  
[www.ameribike.com](http://www.ameribike.com)  
Email: [turtle@ameribike.com](mailto:turtle@ameribike.com)

## Bike-Shell™ Model 351



**Product** Bike-Shell™ Model 351

**Capacity** 1 door/1 Bike

**Materials**

Molded composite lockers shall be manufactured with fiberglass reinforced plastic with a smooth "X" and "Y" pattern on stippled walls and top, with smooth door frame and stippled door. Finish allows easy removal of graffiti and is resistant to impact, scratches and U.V. damage. Lockers shall not use an external or internal frame. Walls and top shall be double wall construction for high strength and insulation from the elements resists impact plus chemicals and stains. Materials will withstand extremes in temperature and other weather/environmental conditions. The locker body components shall be joined by internal fasteners.

Please allow 5ft clearance for both doors

Number plates recessed in face of door. Stainless steel louvered vents. Gear hooks for riding accessories.

Internal heavy duty locking hardware consists of a sliding locking bar, 4feet, 2 inches in length which is secured to the door with 1/2 inch stainless steel bolts and rides on Teflon washers. Movement of locking bar is controlled by stainless steel cams attached to the shaft of the lock. High quality heavy duty gauge stainless steel continuous door hinge with not rust. All fasteners and assembly hardware is zinc plated or better.

Adjustable anchor brackets with stainless steel 3/8" anchors allow leveling of lockers.

2 Standard Lock Options (No charge)  
•High-security, T-Handle Abloy cylinder lock, removable plug-type cylinder. Lock is recessed in the door face.

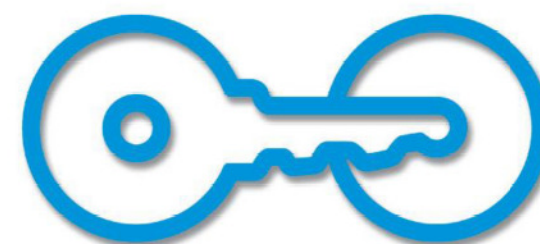
• Heavy duty stainless steel Padlock/U-Lock handle will accommodate high security Padlocks and U-Locks. For U-Locks from 1/2" to 3/4" Diameter. Padlocks and U-Locks not included.

7 Standard Color Options (No charge)

White	Tan	Café	Teal
Green	Blue	Medium Grey	

Please call for custom color, or color match information

**American Bicycle Security Company**  
P.O. Box 7359  
Ventura, CA 93006  
Ph: (800) 245-3723 or (805) 933-3688  
Fax: (805) 933-1865  
[www.ameribike.com](http://www.ameribike.com)  
Email: [turtle@ameribike.com](mailto:turtle@ameribike.com)



Page 1 of 1

ITALO A. CALPESTRI III

& ASSOCIATES

220 COLUMBIA AVENUE  
KENSINGTON, CA 94708  
MOBILE: (510) 851-2387  
FAX: (510) 525-3140



OWNER:

STAMP:

REVISIONS:	DESCRIPTION	DATE
1	DESIGN REVIEW	2019-05-13
2	DESIGN REVIEW	2019-09-12
3	DESIGN REVIEW	2019-10-14

PROJECT  
NEW COMMERCIAL STRUCTURE  
1920 MINTURN STREET  
ALAMEDA, CA 94501

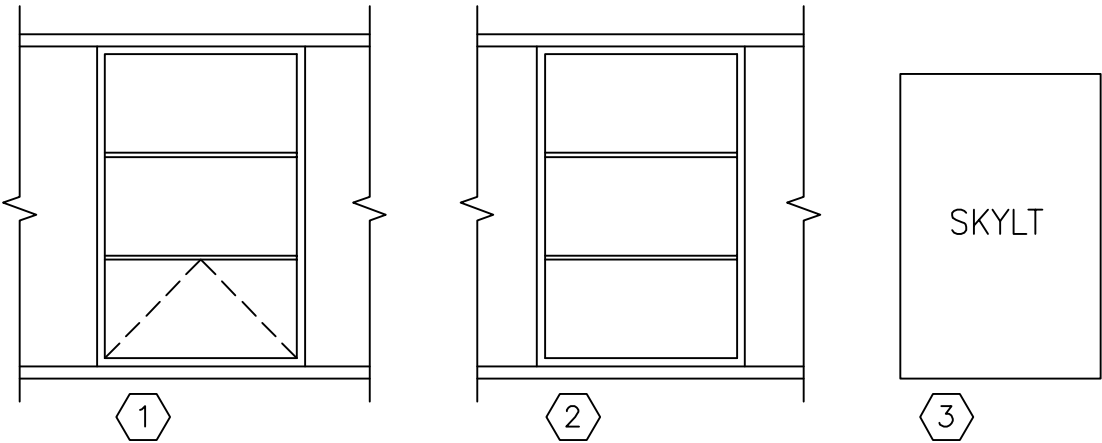
DRAWING TITLE  
BICYCLE LOCKER  
& RACK SPECIFICATIONS

PROJECT No. : 201704LP  
DRAWN BY: DH  
CHECKED BY: IAC  
DATE:  
SCALE:

SHEET NO.: A-2.1



WINDOW SCHEDULE										
NUMBER	TYPE	SIZE	FIRE	MATERIAL	FINISH	FRAME	FINISH	HARDWARE	REMARKS	
1	AWNING	4/0 X 6/8 VENT	NA	ALUM	ANODIZED					
2	FIXED	4/0 X 6/8 FIXED	NA	ALUM	ANODIZED					
3	SKYLT	4/2 X 6/4 VELUX	NA					-	VERIFY SKYLT SIZE W/FRAMING OF ROOF	



5 WINDOW & SKYLIGHT TYPES  
1/4"=1'-0"

#	LOCATION	TYPE	SIZE	THICKNESS	FIRE	MATERIAL	FINISH	FRAME	FINISH	HARDWARE	REMARKS
1	DELETED										
2	SUITES A,B,C,D,E,F	A	3/0 X 7/0	1 3/4"	NA	ALUM	NATURAL		NATURAL	1	
3	DELETED	B	3/0 X 7/0	1 3/4"	NA	ALUM	NATURAL		NATURAL	1	
4	TOILET	C	3/0 X 7/0	1 3/4"	NA	SC WOOD	NATURAL	METAL	PAINT	2	
5	CLOSET	F	2/6 X 7/0	1 3/4"	NA	SC WOOD	NATURAL	METAL	PAINT	3	
6	ELECTRIC	F	3/0 X 7/0	1 3/4"	NA	STEEL	PAINT	METAL	PAINT	1	
7	TRASH	D	SEE PLAN	ROLL-UP DOOR	STEEL	PAINT	STEEL	PAINT	STEEL	PAINT	5
8	GARAGE, SUITES A-F	D	SEE PLAN	ROLL-UP DOOR	STEEL	PAINT	STEEL	PAINT	STEEL	PAINT	5

DOOR HARDWARE SCHEDULE				REMARKS
HARDWARE GROUP	DESCRIPTION			
1	LOCKSET CLOSER STOP HINGES	SCHLAGE "D" SERIES W/RHODES LEVER. LOCKSET SET. DOME MCKINNEY TA 2714, 2 PAIR BB		
2	LOCKSET CLOSER STOP HINGES	SCHLAGE "D" SERIES W/RHODES LEVER. PRIVACY LOCK SET. NONE FLOOR DOME		
3	LOCKSET CLOSER STOP HINGES	SCHLAGE "D" SERIES W/RHODES LEVER. PASSAGE SET. NONE NONE 1 1/2" PAIR		
4	DELETED			
5	LOCKSET CLOSER STOP HINGES	EXTERIOR LOCK PER MANUF.		TRASH, GARAGE, SUITES A-F
6	LOCKSET CLOSER STOP HINGES			
7	LOCKSET CLOSER STOP HINGES			

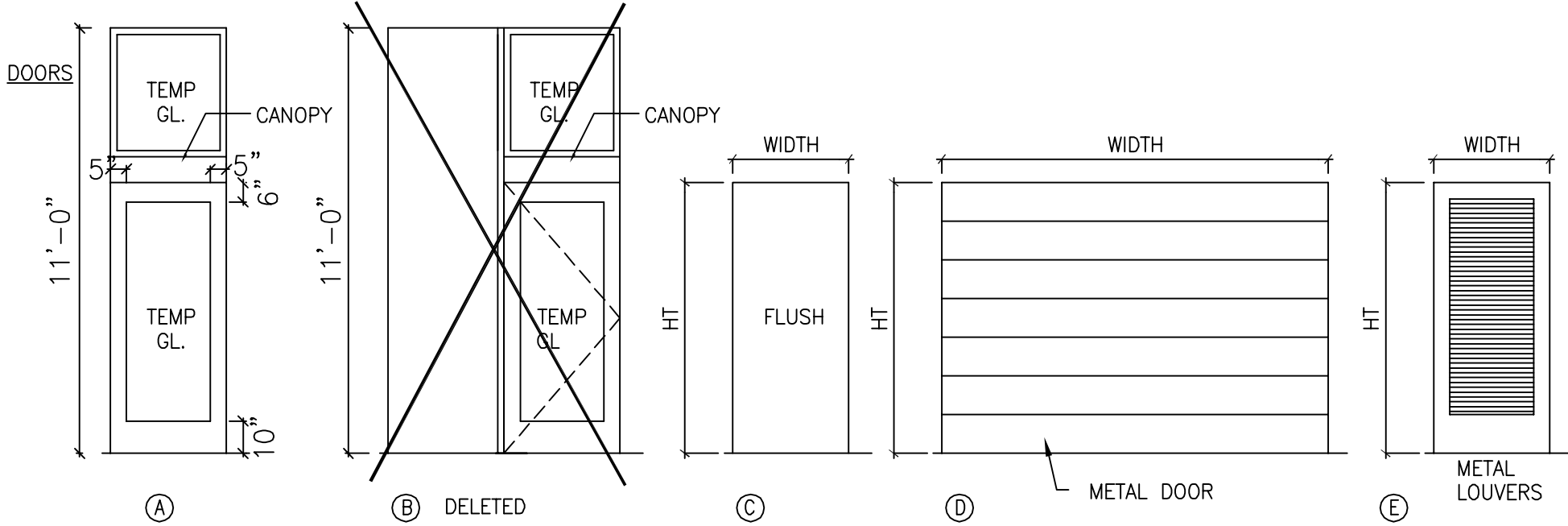
DOOR SCHEDULE NOTES

- A. ALL DOORS SHALL BE EQUIPPED WITH SINGLE-EFFORT, NON-GRASP HARDWARE (I.E. LEVER) MOUNTED AT SAME HT. ABOVE FLR. AS (E).
- B. DOORS SHALL SWING TO THE FULLY OPEN POSITION WHEN AN OPENING FORCE NOT EXCEEDING 5 POUNDS IS APPLIED TO THE LATCH SIDE.
- C. DOOR HARDWARE @ ALL CORRIDOR DRS. SHALL ALLOW DRS. TO BE OPENED FROM THE INSIDE W/O KEY, SPECIAL KNOWLEDGE, OR EFFORT.
- D. DOORS SHALL MEET THE REQUIREMENTS OF CBC SECTION 1003.3.1
- E. DOOR LIGHTS IN RATED DRS. SHALL BE STL FRAME W/SAFETY GLASS.
- F. VERIFY ALL DIMS. & CONDITIONS PRIOR TO ORDERING OR FABRICATION.
- G. MANUALLY OPERATED EDGE OR SURFACE MOUNTED FLUSH BOLTS OR ANY OTHER TYPE OF DEVICE THAT MAY BE USED TO CLOSE OR RESTRAIN A DR. OTHER THAN BY OPERATION OF THE LOCKING DEVICE IS NOT PERMITTED.

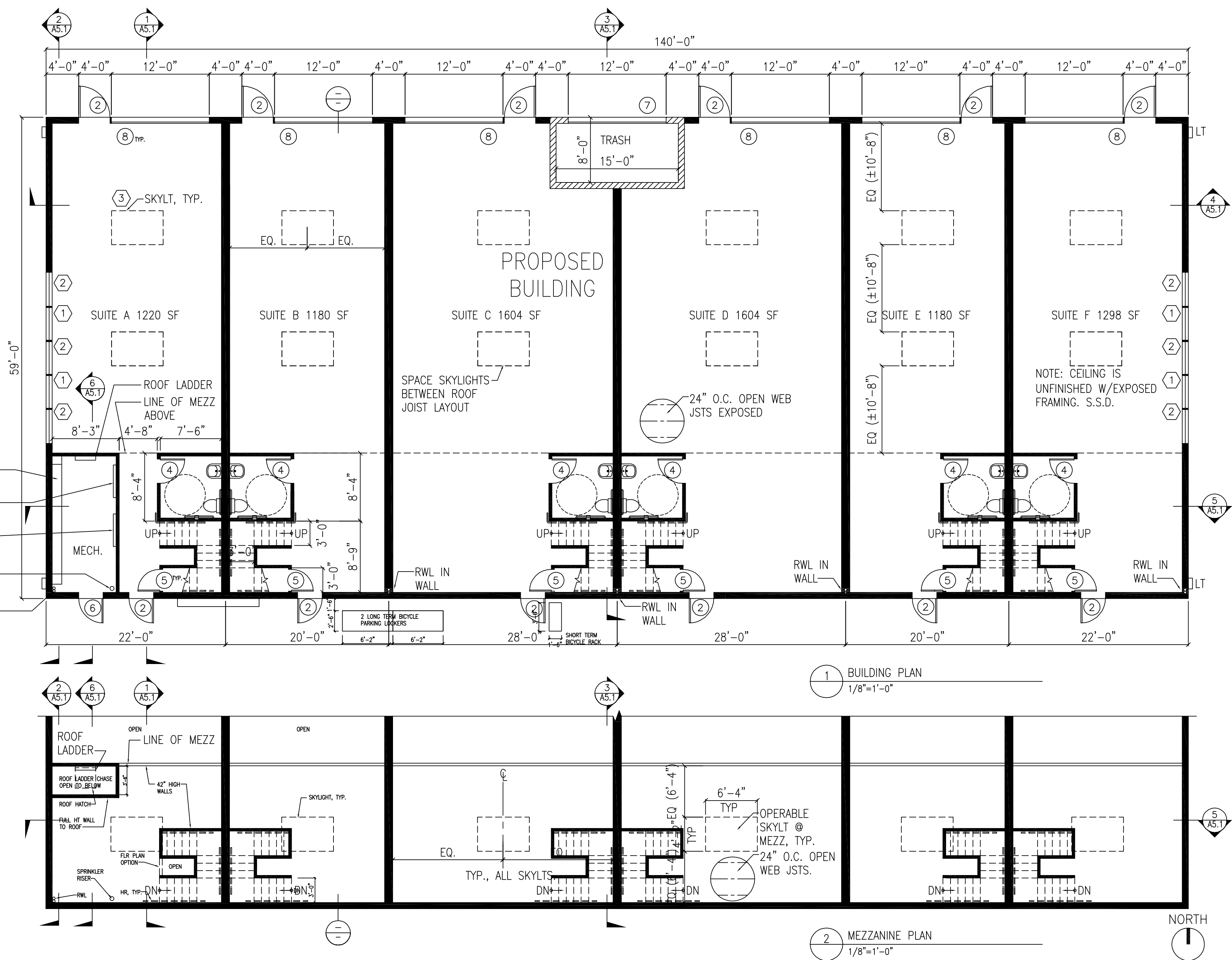
ROOM LEGEND

SUITE 100  
OCCUPANTS 1/50  
\*USE STORAGE

\*UNLABELED ROOMS ARE OFFICES



4 DOOR TYPES  
1/4"=1'-0"



ITALO A. CALPESTRI III

& ASSOCIATES

220 COLUMBIA AVENUE  
KENSINGTON, CA 94708  
MOBILE: (510) 851-2387  
FAX: (510) 525-3140



OWNER:

STAMP:

REVISIONS:		
No.	DESCRIPTION	DATE
1	DESIGN REVIEW	2019-05-13
2	DESIGN REVIEW	2019-09-12
3	DESIGN REVIEW	2019-10-14

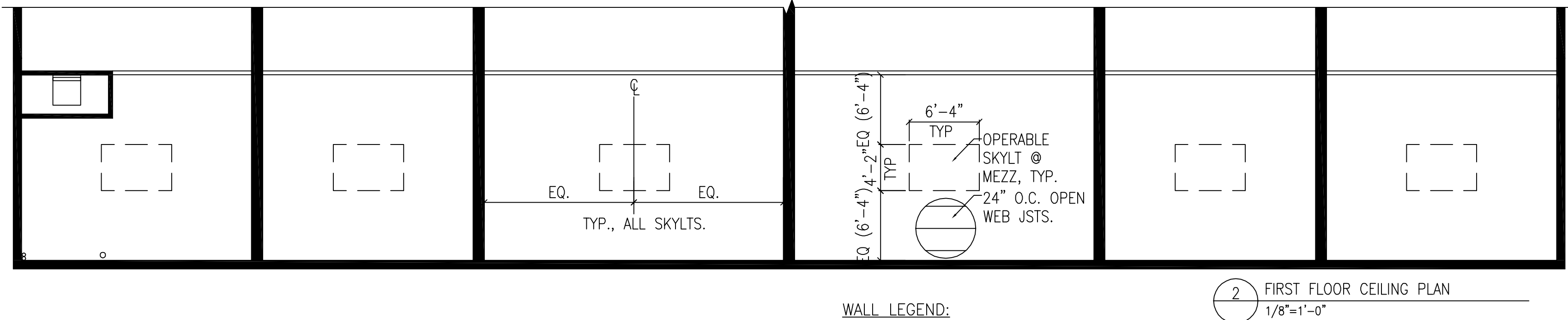
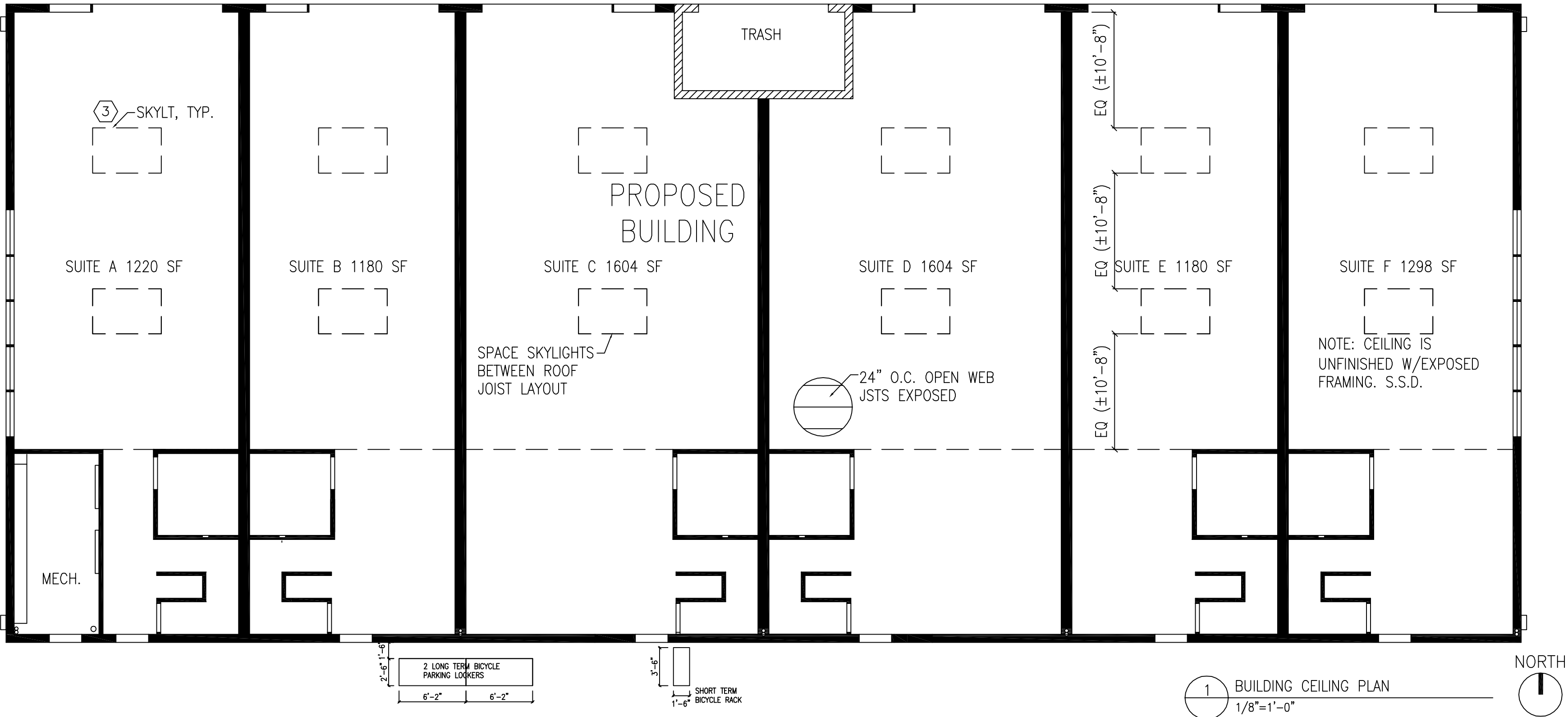
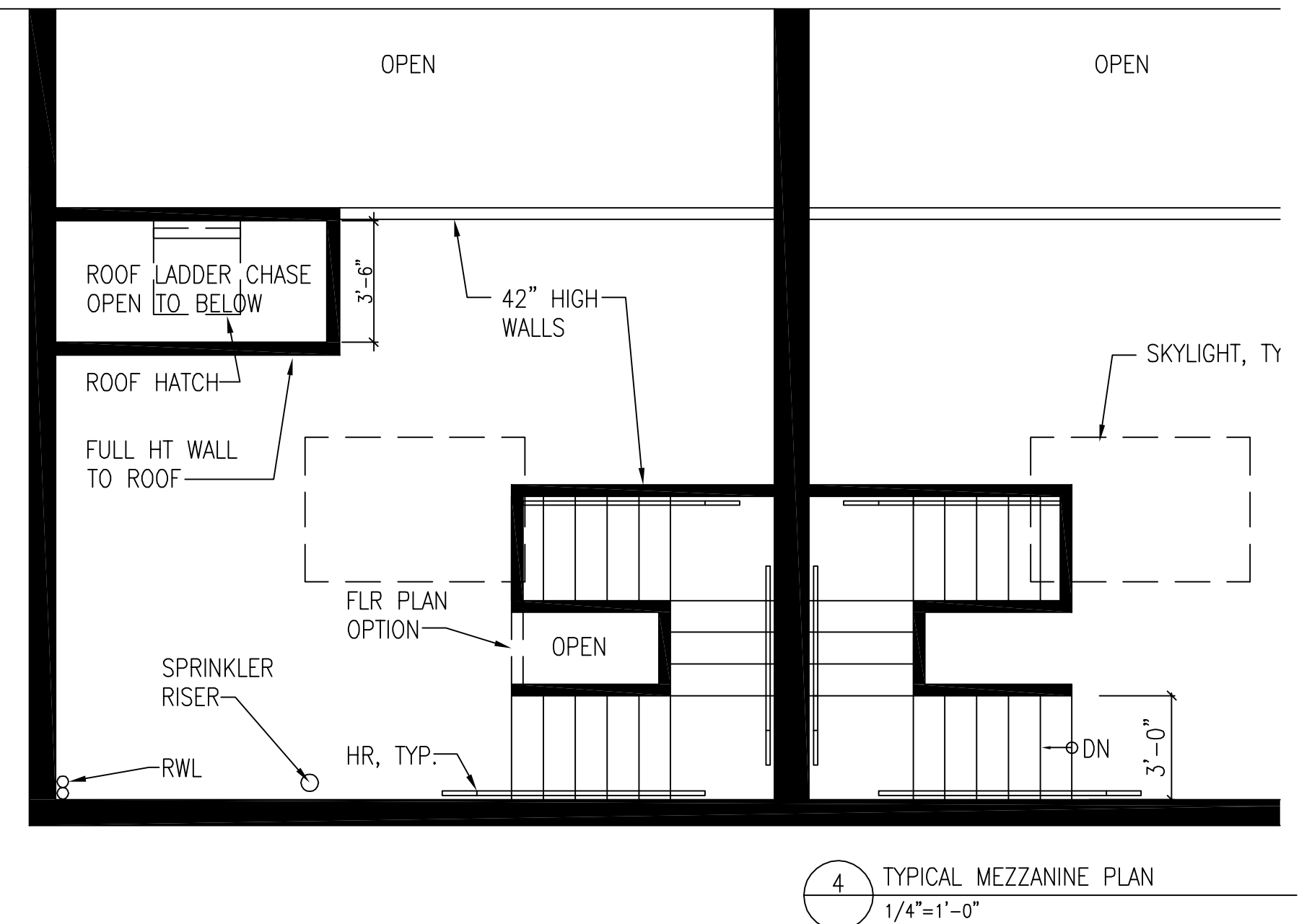
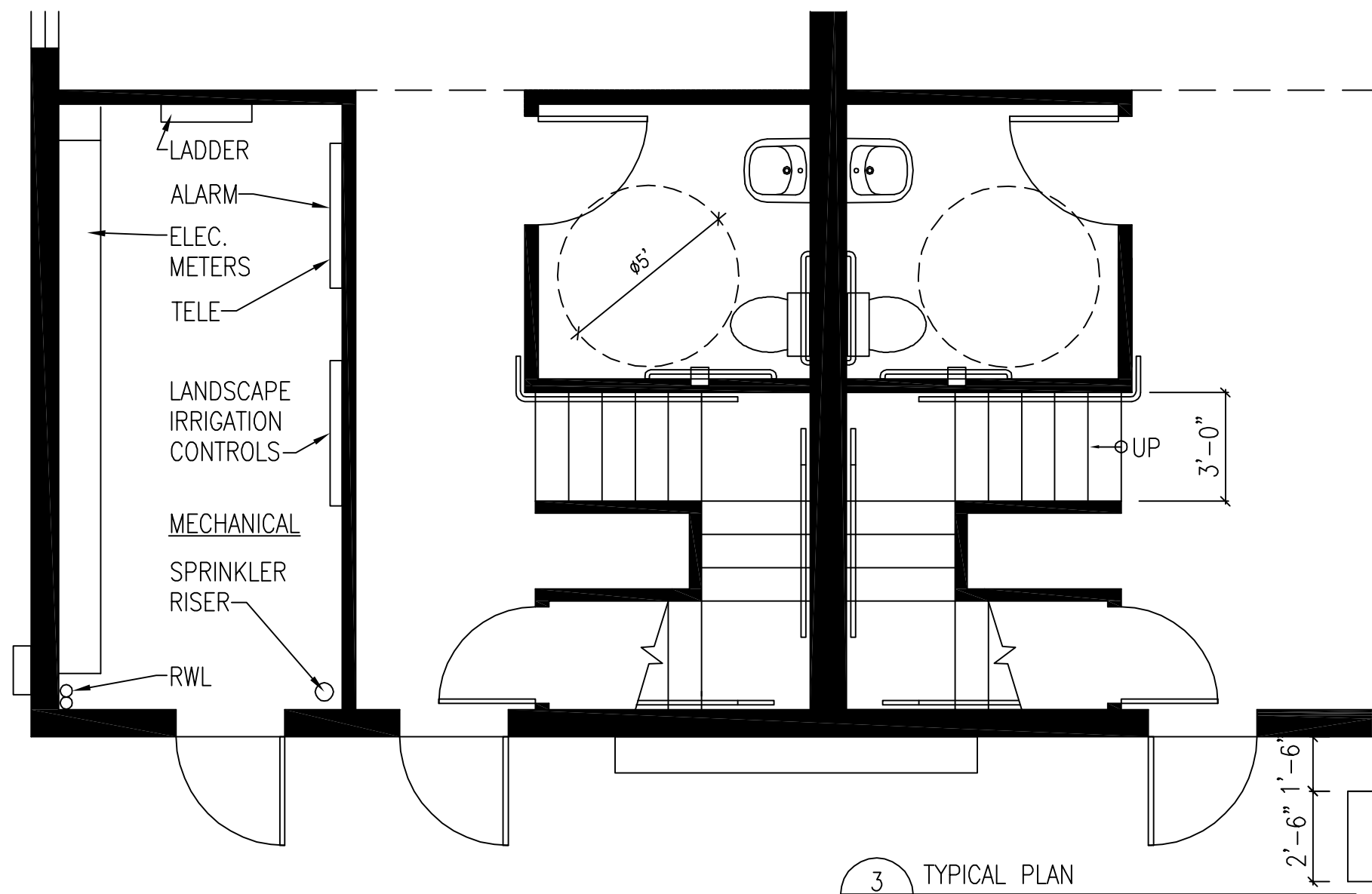
PROJECT  
NEW COMMERCIAL STRUCTURE  
1920 MINTURN STREET  
ALAMEDA, CA 94501

DRAWING TITLE  
BUILDING PLANS  
& SCHEDULES

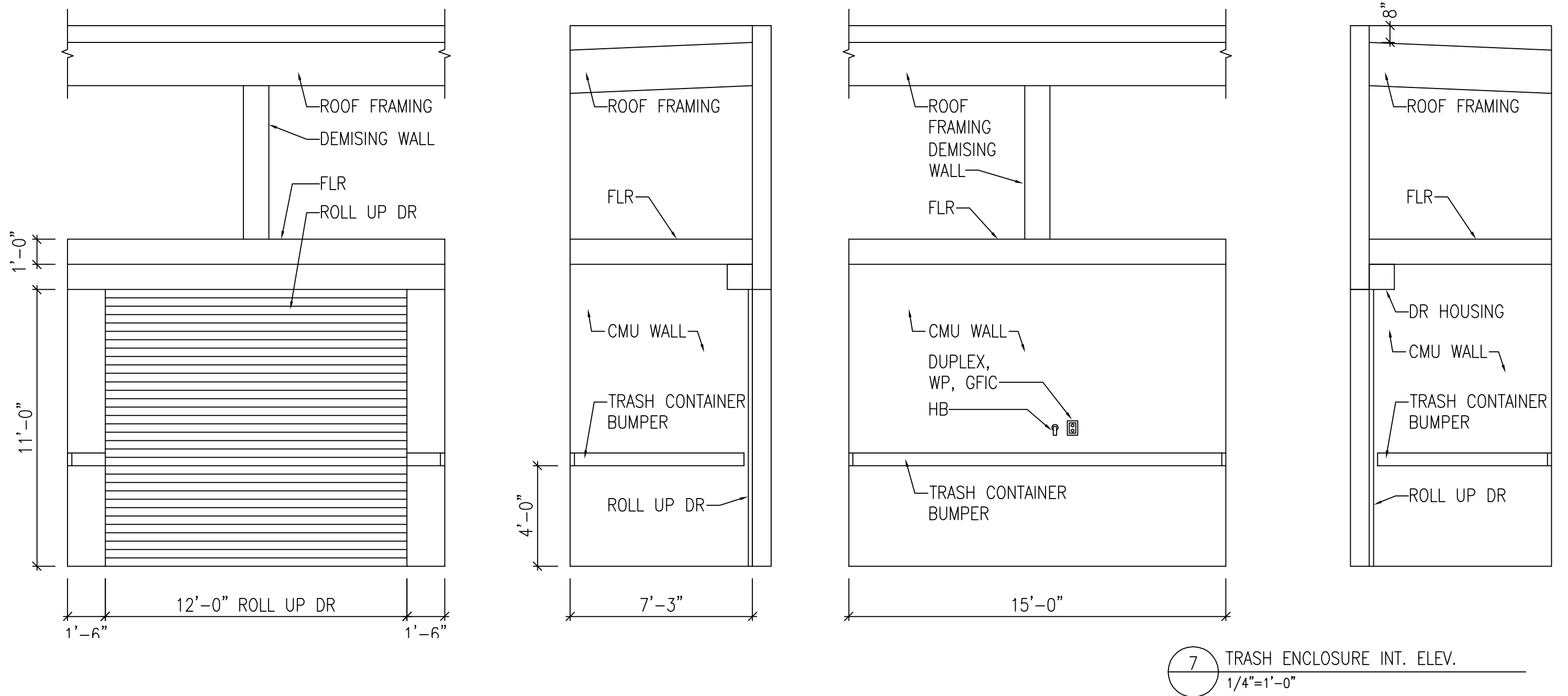
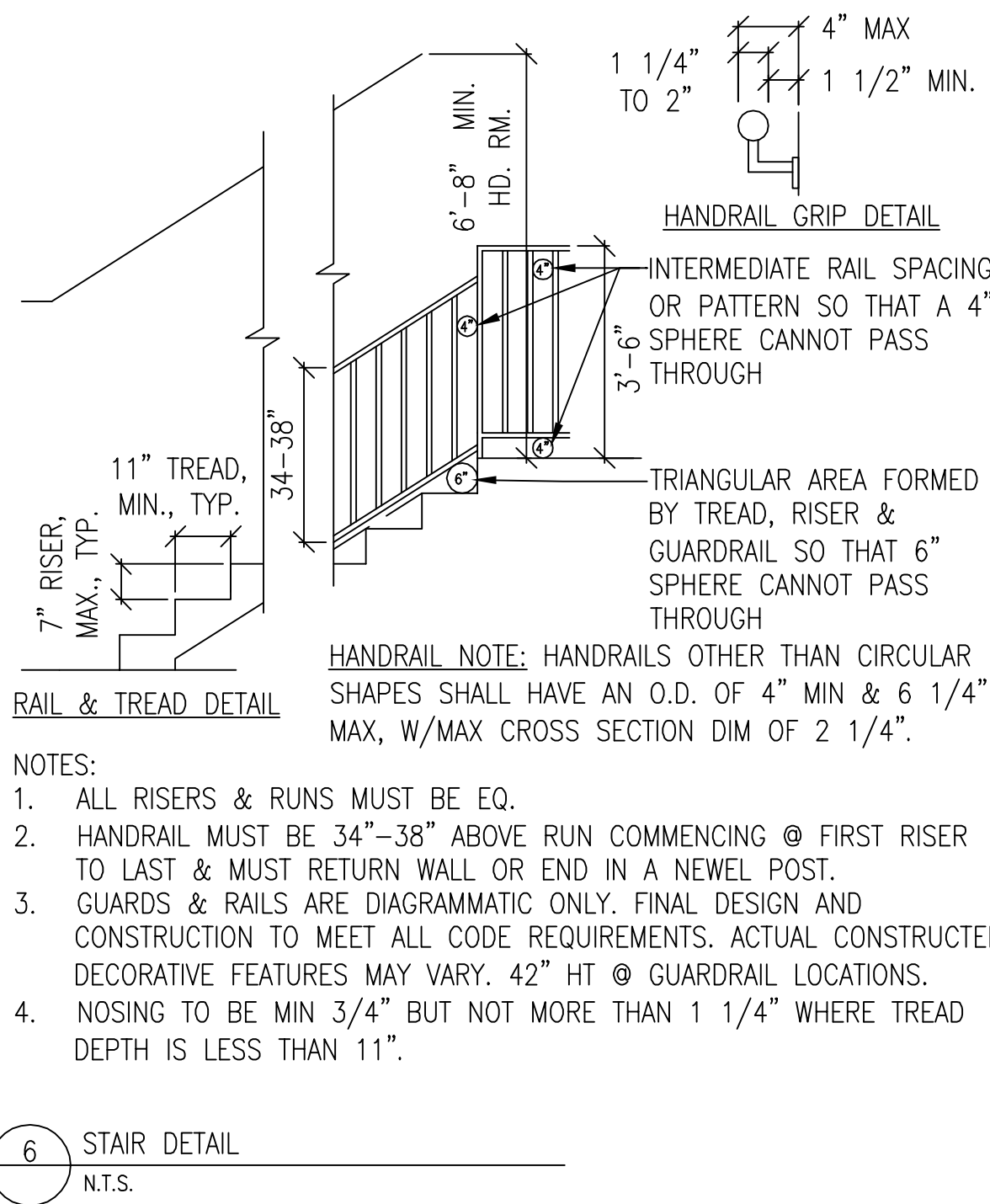
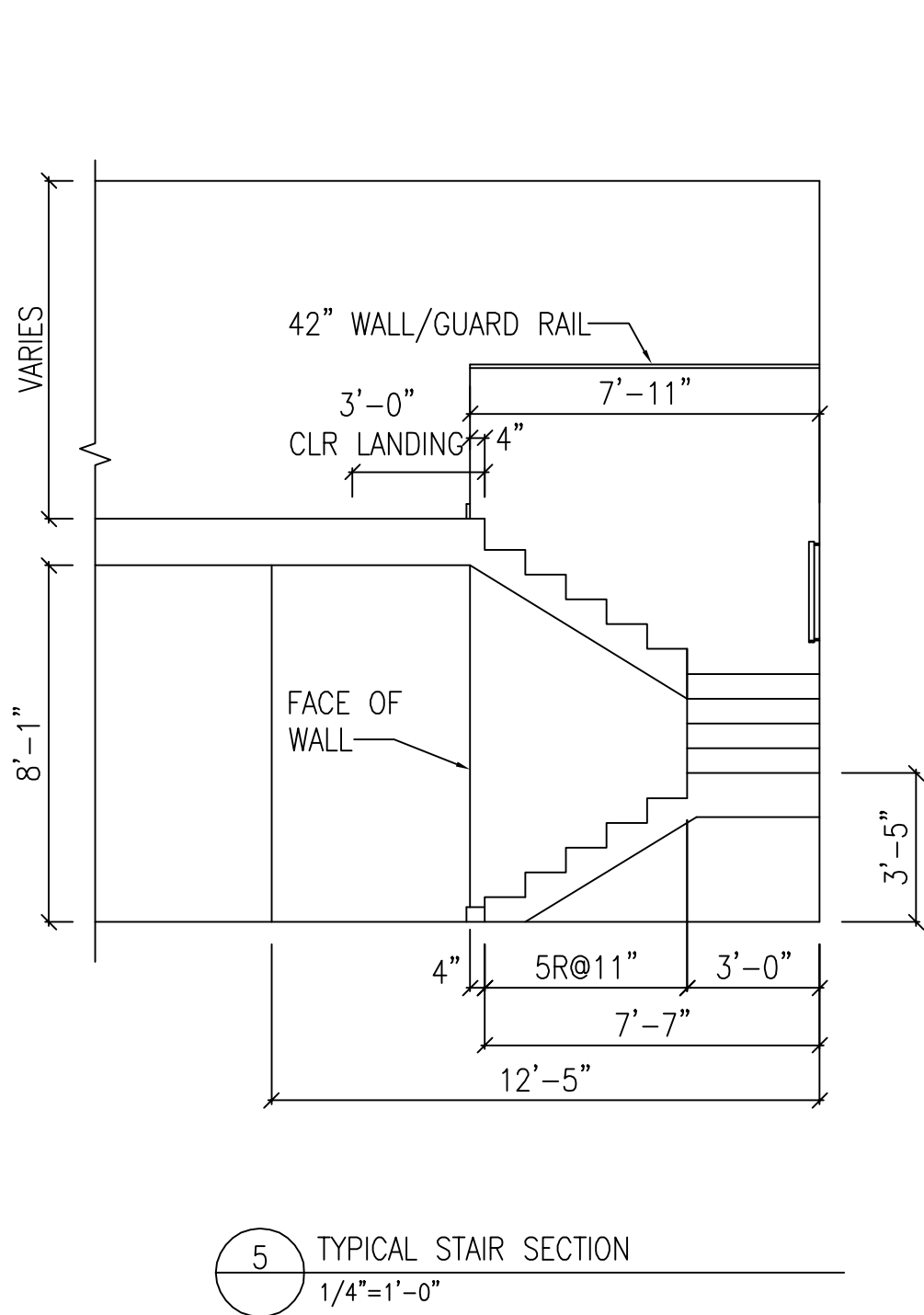
PROJECT No. : 201704LP  
DRAWN BY: DH  
CHECKED BY: IAC  
DATE:  
SCALE: AS NOTED

SHEET NO.:

A-3

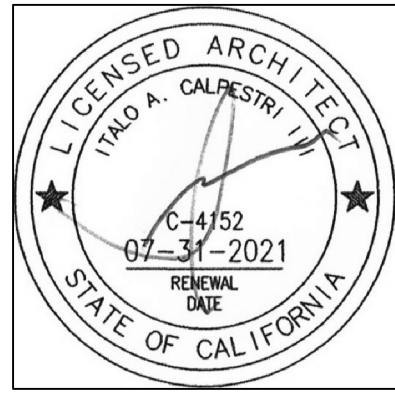


- WALL LEGEND:
- (E) WALL TO REMAIN
  - (E) NON-BEARING WALL TO BE REMOVED
  - (N) 2X FRAMING @ 16" OC, 5/8" TYPE 'X' GYP BD FASTENED 6" OC AT EDGES & 12" OC FIELD
  - (N) NON-BEARING CMU WALL



ITALO A. CALPESTRI III  
& ASSOCIATES

220 COLUMBIA AVENUE  
KENSINGTON, CA 94708  
MOBILE: (510) 851-2387  
FAX: (510) 525-3140



OWNER:

STAMP:

REVISIONS:		
No.	DESCRIPTION	DATE
1	DESIGN REVIEW	2019-05-13
2	DESIGN REVIEW	2019-09-12
3	DESIGN REVIEW	2019-10-14

PROJECT  
NEW COMMERCIAL STRUCTURE  
1920 MINTURN STREET  
ALAMEDA, CA 94501

DRAWING TITLE  
REFLECTED CEILING  
PLANS, SECTIONS  
& DETAILS

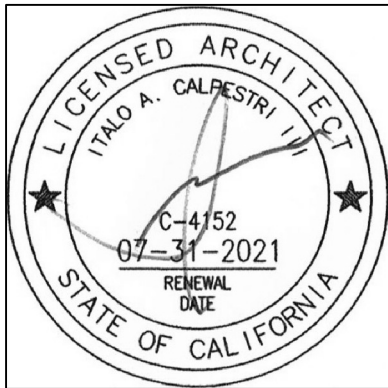
PROJECT No. : 201704LP  
DRAWN BY: DH  
CHECKED BY: IAC  
DATE:  
SCALE: AS NOTED

SHEET NO.:

A-4

ITALO A. CALPESTRI III  
& ASSOCIATES

220 COLUMBIA AVENUE  
KENSINGTON, CA 94708  
MOBILE: (510) 851-2387  
FAX: (510) 525-3140



OWNER:

STAMP:

REVISIONS:		
No.	DESCRIPTION	DATE
1	DESIGN REVIEW	2019-05-13
2	DESIGN REVIEW	2019-09-12
Δ	DESIGN REVIEW	2019-10-14

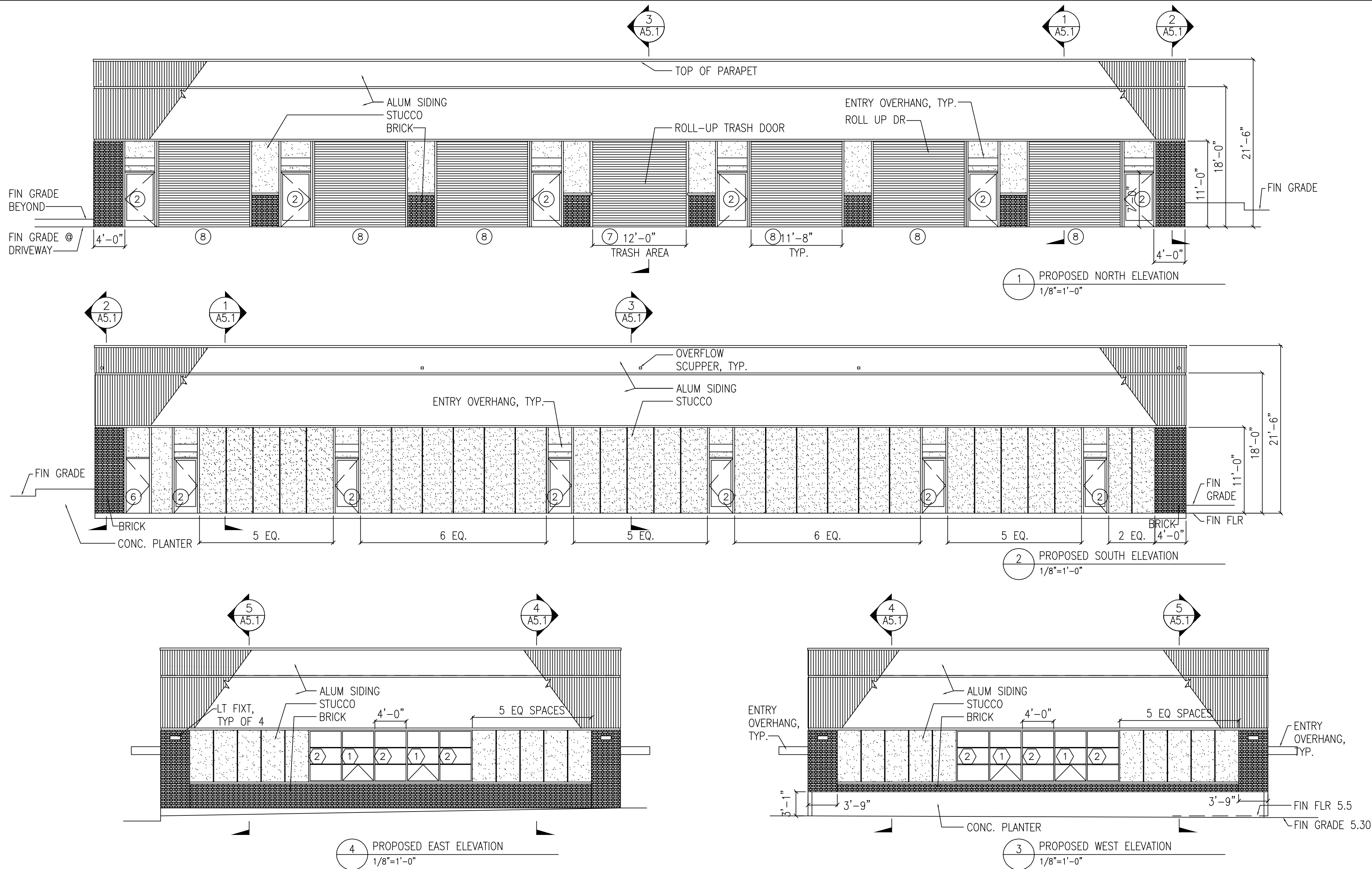
PROJECT  
NEW COMMERCIAL STRUCTURE  
1920 MINTURN STREET  
ALAMEDA, CA 94501

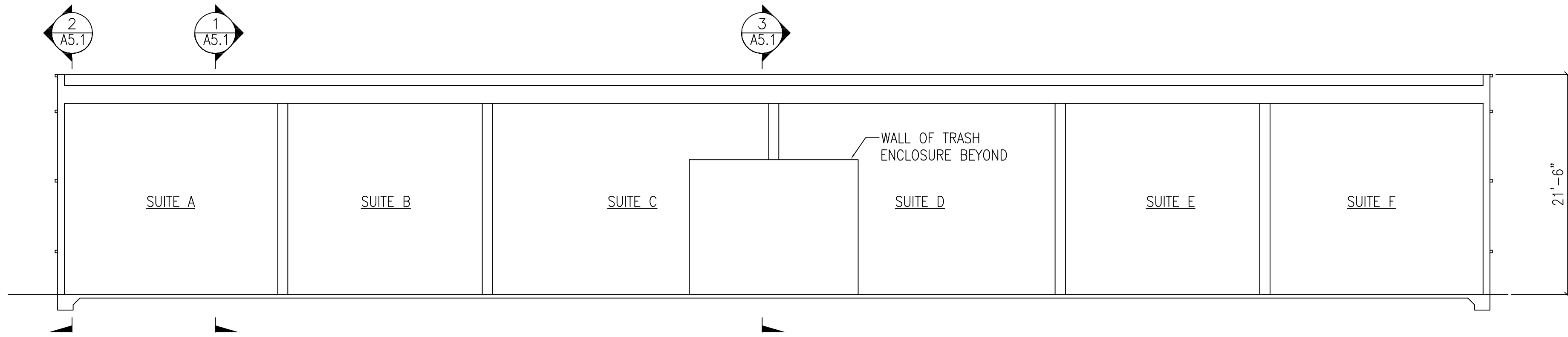
DRAWING TITLE  
PROPOSED  
ELEVATIONS

PROJECT No. : 201704LP  
DRAWN BY: DH  
CHECKED BY: IAC  
DATE:  
SCALE: AS NOTED

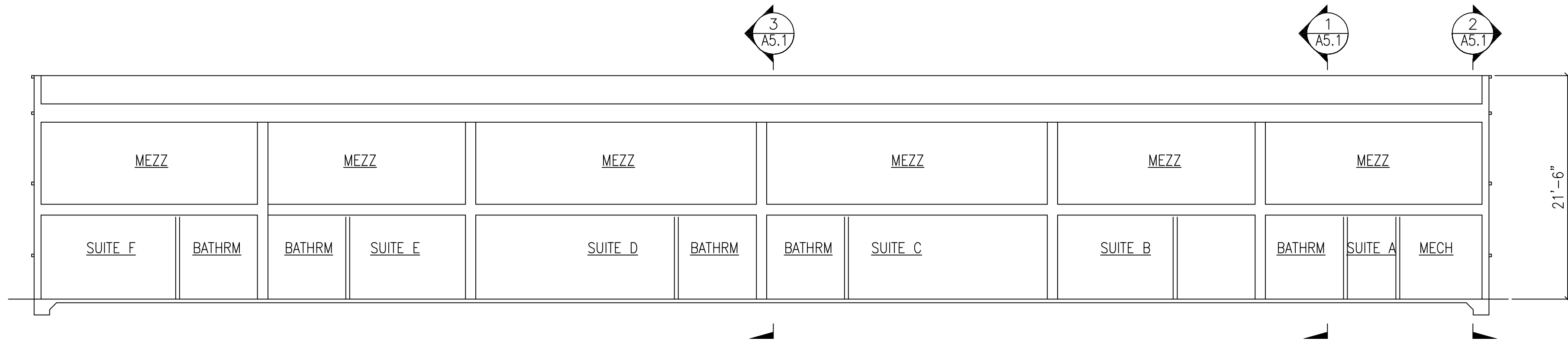
SHEET NO.:

A-5

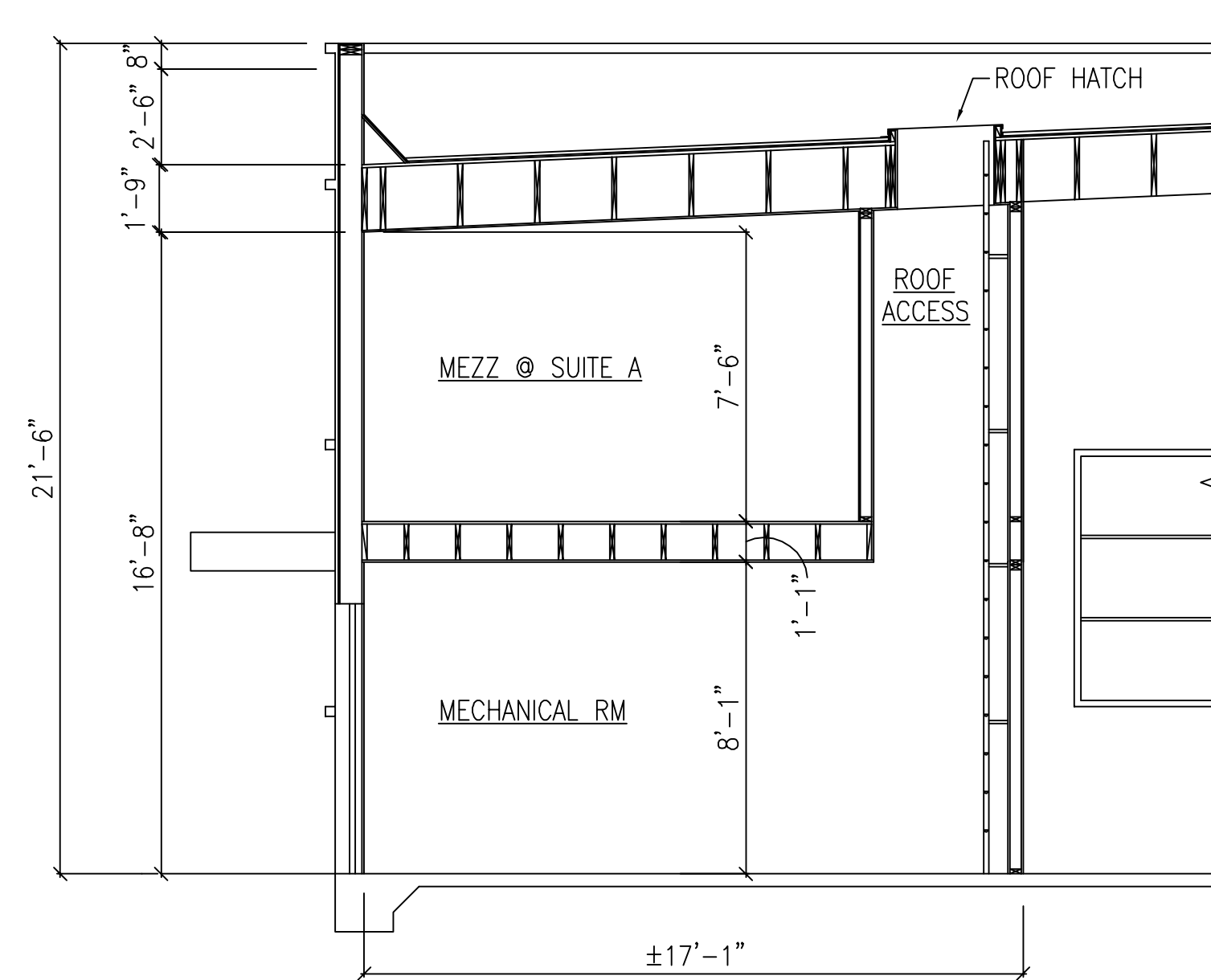




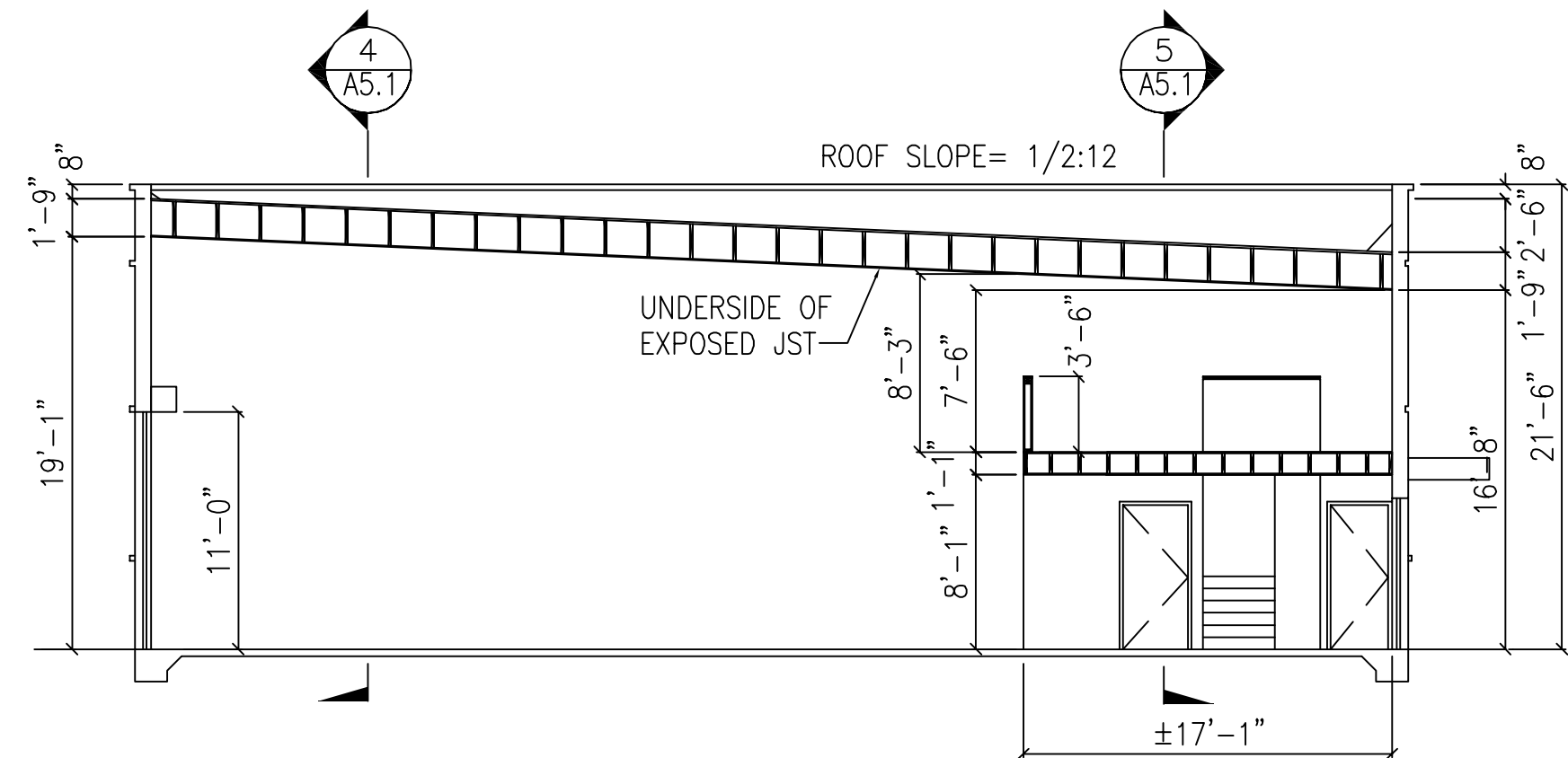
4 SECTION  
1/8"=1'-0"



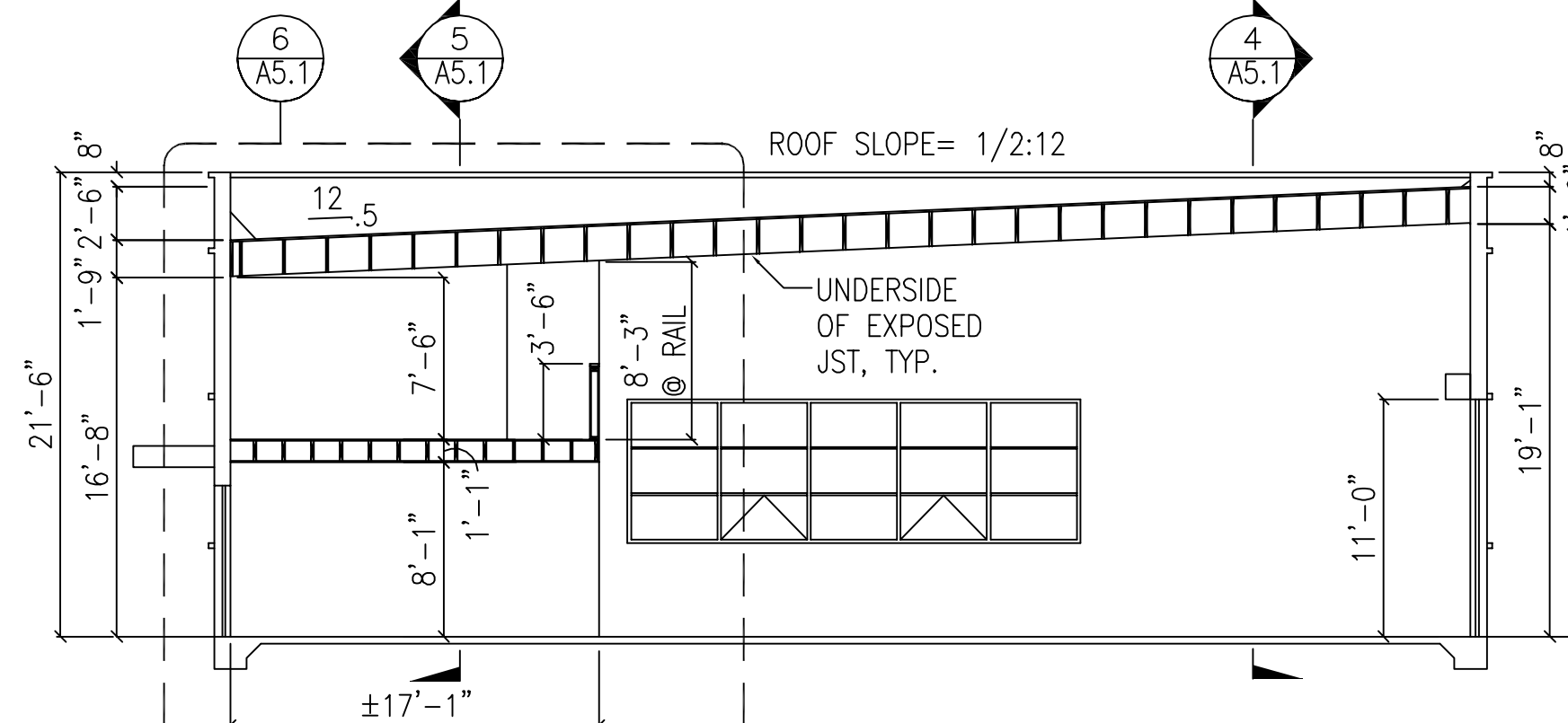
5 SECTION  
1/8"=1'-0"



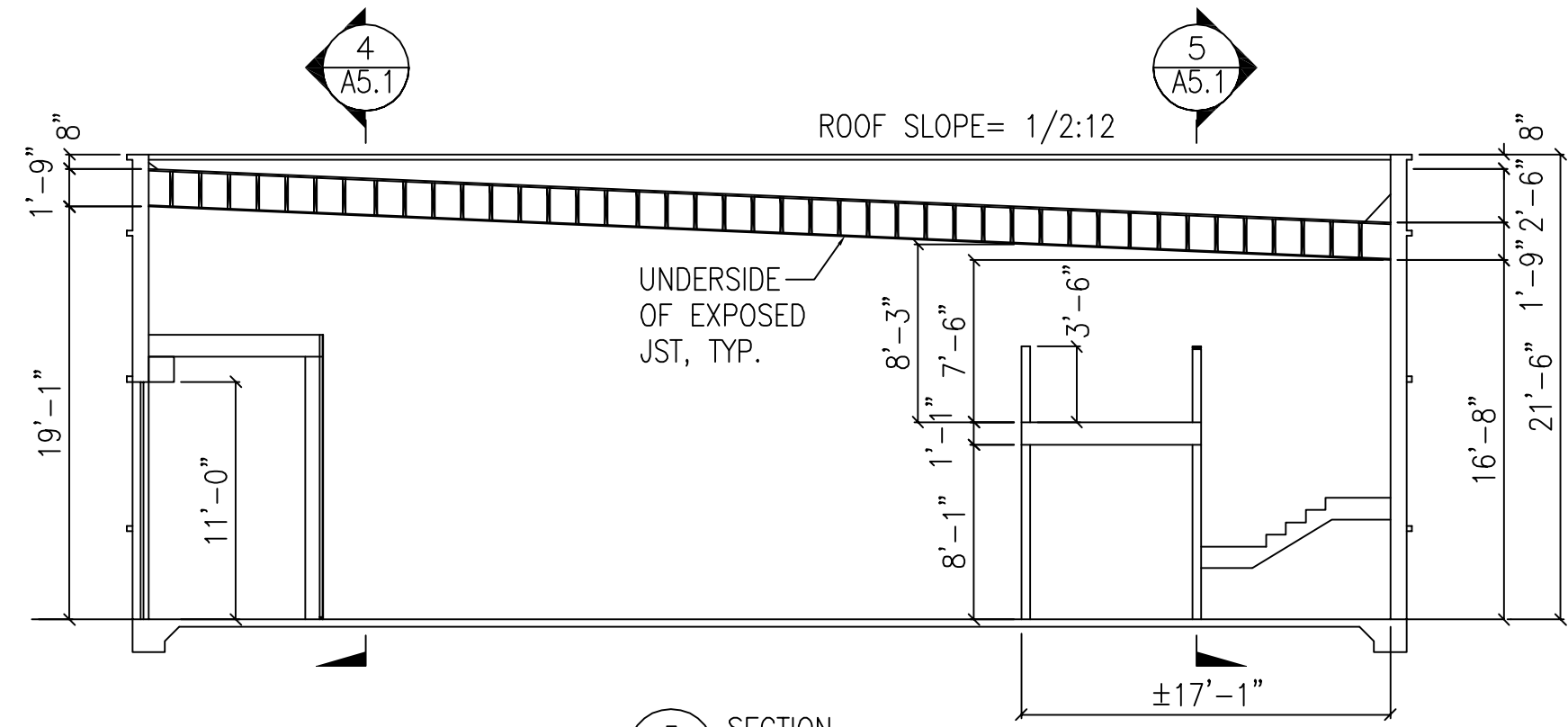
6 SECTION DETAIL  
1/4"=1'-0"



1 SECTION  
1/8"=1'-0"



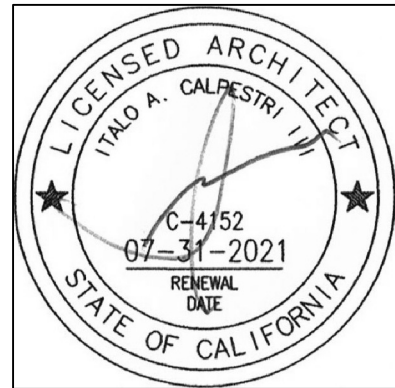
2 SECTION  
1/8"=1'-0"



3 SECTION  
1/8"=1'-0"

ITALO A. CALPESTRI III  
& ASSOCIATES

220 COLUMBIA AVENUE  
KENSINGTON, CA 94708  
MOBILE: (510) 851-2387  
FAX: (510) 525-3140



OWNER:

STAMP:

REVISIONS:		
No.	DESCRIPTION	DATE
1	DESIGN REVIEW	2019-05-13
2	DESIGN REVIEW	2019-09-12
3	DESIGN REVIEW	2019-10-14

PROJECT  
NEW COMMERCIAL STRUCTURE  
1920 MINTURN STREET  
ALAMEDA, CA 94501

DRAWING TITLE  
SECTIONS

PROJECT No. : 201704LP  
DRAWN BY: DH  
CHECKED BY: IAC  
DATE:  
SCALE: AS NOTED

SHEET NO.: A-5.1



ITALO A. CALPESTRI III  
& ASSOCIATES

220 COLUMBIA AVENUE  
KENSINGTON, CA 94708  
MOBILE: (510) 851-2387  
FAX: (510) 525-3140



OWNER:

STAMP:

REVISIONS:		
No.	DESCRIPTION	DATE
1	DESIGN REVIEW	2019-05-13
2	DESIGN REVIEW	2019-09-12
A	DESIGN REVIEW	2019-10-14

PROJECT  
NEW COMMERCIAL STRUCTURE  
1920 MINTURN STREET  
ALAMEDA, CA 94501

DRAWING TITLE  
STREET  
VIEW ELEVATIONS

PROJECT No. : 201704LP  
DRAWN BY: DH  
CHECKED BY: IAC  
DATE:  
SCALE: AS NOTED

SHEET NO.:

A-6

