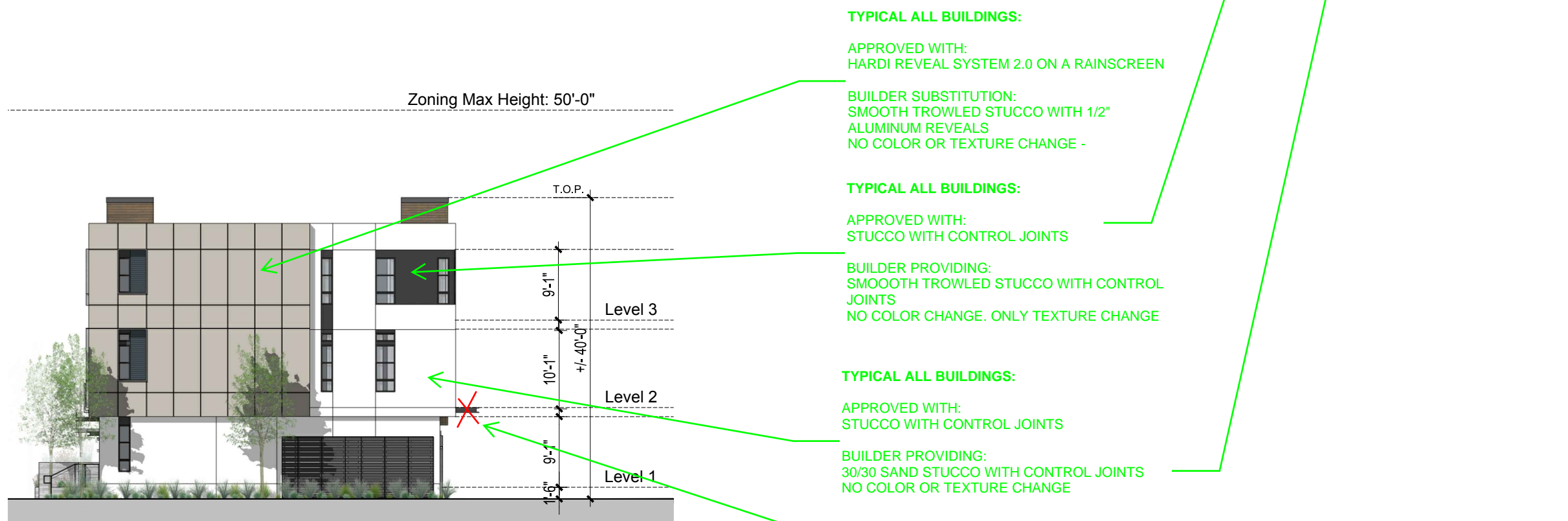
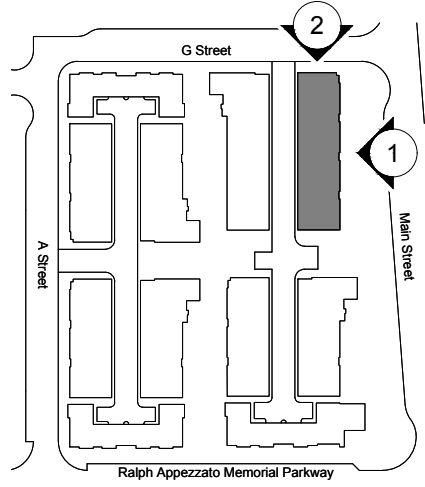




1. Front Elevation



2. Right Elevation



Key Map n.t.s.

ALAMEDA POINT BLOCK 6 | ALAMEDA, CA

ITEMS NOT MENTIONED HAVE NO CHANGES FROM APPROVED SET
CONCEPTUAL ELEVATIONS - BUILDING 1



BUILT
EXAMPLE OF
MOUNTAIN
CEDAR

TYPICAL ALL BUILDINGS:

APPROVED WITH:
PHENOLIC PANELS, OR CEMENTOUS PANEL OR REAL
WOOD SIDING ON A RAINSCREEN

BUILDER SUBSTITUTION:
WOODTONE RUSTIC SERIES 6.25" LAP SIDING ON
ALLURA OR HARDI
COLOR: MOUNTAIN CEDAR

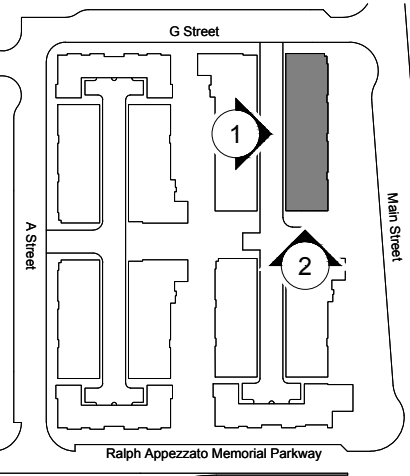
<https://woodtone.com/product/rusticseries/rusticseries-lap/>



TYPICAL ALL BUILDINGS:

APPROVED WITH:
STUCCO WITH CONTROL JOINTS

BUILDER PROVIDING:
SMOOOTH TROWLED STUCCO WITH CONTROL
JOINTS
NO COLOR CHANGE. ONLY TEXTURE CHANGE



Key Map n.t.s.



1. Rear Elevation

TYPICAL ALL BUILDINGS:

APPROVED WITH:
HARDI REVEAL 2.0 SYSTEM ON A RAINSCREEN

BUILDER SUBSTITUTION:
SMOOTH TROWLED STUCCO WITH 1/2"
ALUMINUM REVEALS
NO COLOR OR TEXTURE CHANGE -

Maintenance Roof
Access Ladder, typ.



2. Left Elevation

TYPICAL ALL BUILDINGS:

APPROVED WITH:
STUCCO WITH CONTROL JOINTS

BUILDER PROVIDING:
30/30 SAND STUCCO WITH CONTROL JOINTS
NO COLOR OR TEXTURE CHANGE

REMOVE AWNINGS AT THE ALLYS - SEE MEMO FOR DESCRIPTION
OCCURS ONLY AT UNIT 3

ALAMEDA POINT BLOCK 6 | ALAMEDA, CA

ITEMS NOT MENTIONED HAVE NO CHANGES FROM APPROVED SET
CONCEPTUAL ELEVATIONS - BUILDING 1



SUBSTITUTION SET
2019-12-17

14072
KTGY#150846

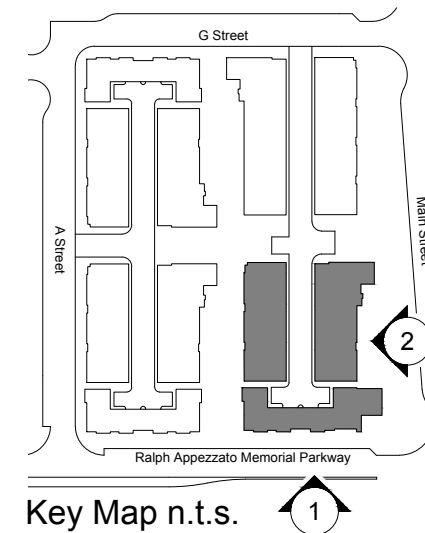
06.15.16



17.2



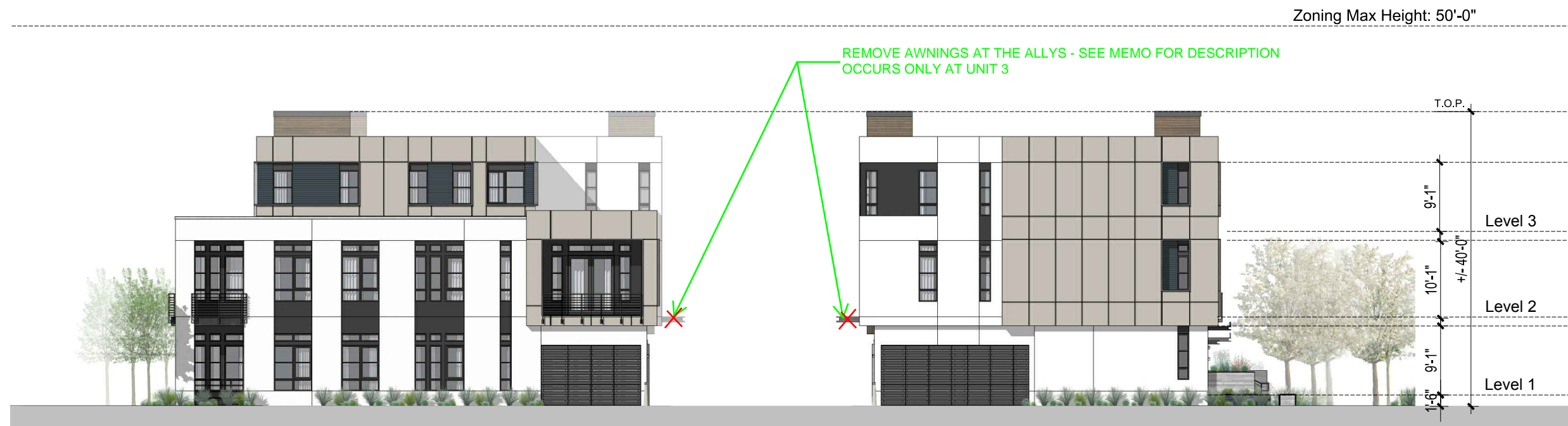
1. Front Elevation



2. Right Elevation

ALAMEDA POINT BLOCK 6 | ALAMEDA, CA

ITEMS NOT MENTIONED HAVE NO CHANGES FROM APPROVED SET CONCEPTUAL ELEVATIONS - BUILDING 4



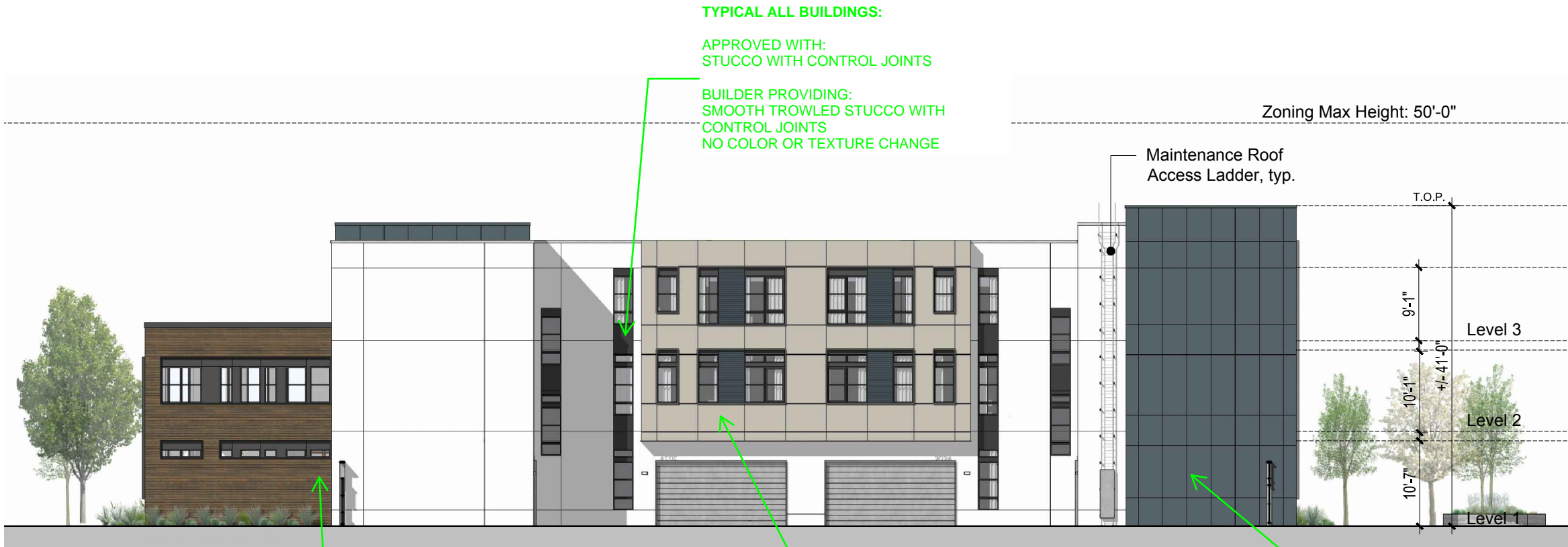
1. Rear Elevation



2. Left Elevation

ALAMEDA POINT BLOCK 6 | ALAMEDA, CA

ITEMS NOT MENTIONED HAVE NO CHANGES FROM APPROVED SET
CONCEPTUAL ELEVATIONS - BUILDING 4



1. Interior Motor Court Elevation

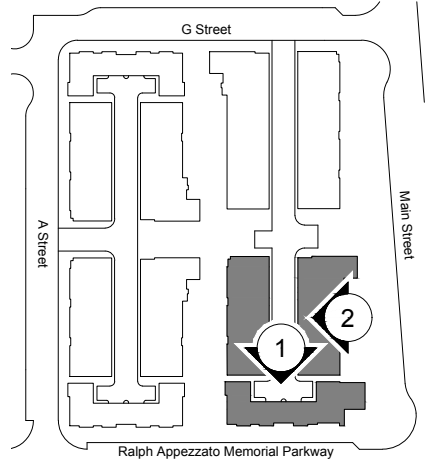


TYPICAL ALL BUILDINGS:
 APPROVED WITH:
 PHENOLIC PANELS, OR CEMENTOUS PANEL OR REAL WOOD SIDING ON A RAINSCREEN
 BUILDER SUBSTITUTION:
 WOODTONE RUSTIC SERIES 6.25" LAP SIDING ON ALLURA OR HARDI
 COLOR: MOUNTAIN CEDAR

<https://woodtone.com/product/rusticseries/rusticseries-lap/>

TYPICAL ALL BUILDINGS:
 APPROVED WITH:
 HARDI REVEAL 2.0 SYSTEM ON A RAINSCREEN
 BUILDER SUBSTITUTION:
 SMOOTH TROWLED STUCCO WITH 1/2" ALUMINUM REVEALS
 NO COLOR OR TEXTURE CHANGE

TYPICAL ALL BUILDINGS:
 APPROVED WITH:
 SMOOTH TROWLED STUCCO WITH REVEALS
 BUILDER SUBSTITUTION:
 30/30 SAND STUCCO WITH 1/2" ALUMINUM REVEALS
 NO COLOR CHANGE



Key Map n.t.s.



2. Interior Motor Court Elevation

TYPICAL ALL BUILDINGS:
 APPROVED WITH:
 STUCCO WITH CONTROL JOINTS
 BUILDER PROVIDING:
 30/30 SAND STUCCO WITH CONTROL JOINTS
 NO COLOR OR TEXTURE CHANGE

REMOVE AWNINGS AT THE ALLYS - SEE MEMO FOR DESCRIPTION
 OCCURS ONLY AT UNIT 3

ALAMEDA POINT BLOCK 6 | ALAMEDA, CA

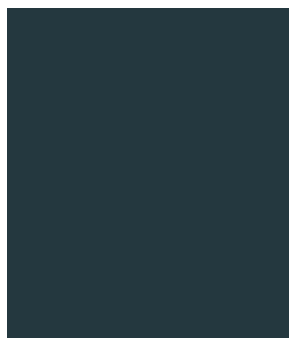
ITEMS NOT MENTIONED HAVE NO CHANGES FROM APPROVED SET CONCEPTUAL ELEVATIONS - BUILDING 4



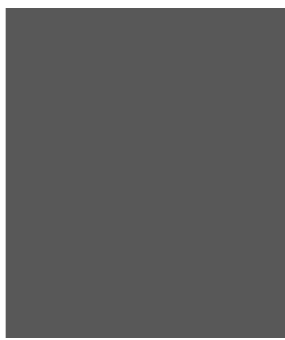
S1 **STUCCO 1**
30/30 FINISH
INCREDIBLE WHITE
(SW 7028) or similar



S2 **STUCCO 2**
~~30/30 FINISH~~ **SMOOTH TROWLED FINISH**
PEPPERCORN
(SW 7674) or similar



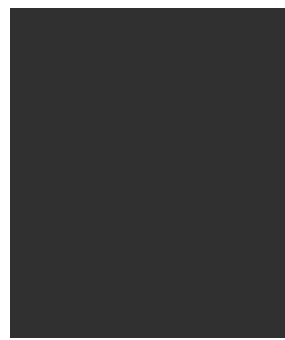
S3 **STUCCO 3**
~~SMOOTH FINISH~~ **30/30 SAND FINISH**
DARK NIGHT
(SW 6237) or similar



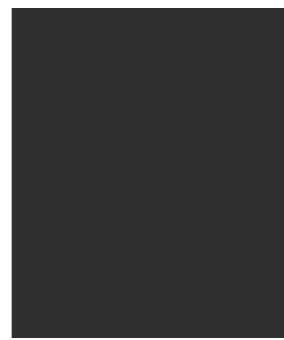
S4 **STUCCO 4**
SMOOTH FINISH
PEPPERCORN
(SW 7674) or similar



S5 **STUCCO 5**
SMOOTH FINISH
ANEW GRAY
(SW 7030) or similar



M1 **METAL RAILING**
CAVIAR
(SW 6990) or similar

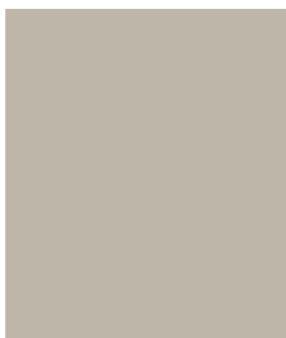


M2 **METAL AWNING**
CAVIAR
(SW 6990) or similar



M3 **TRIM**
~~Opt 1- METAL TRIM~~
Opt 2- CEMENTITIOUS
TRIM
or similar

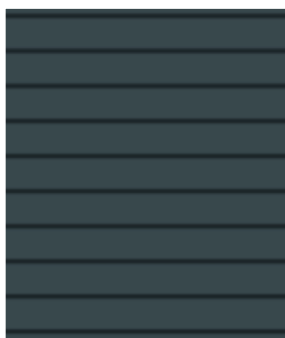
✓ = NO CHANGE



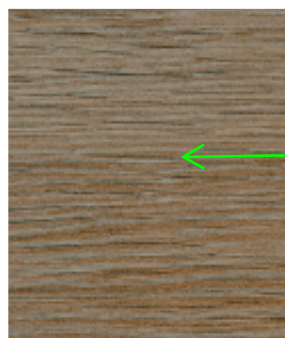
CP1 **CEMENTITIOUS PANEL 1**
ANEW GRAY
(SW 7030) or similar



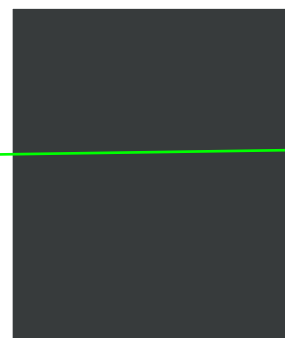
CP2 **CEMENTITIOUS PANEL 2**
PEPPERCORN
(SW 7674) or similar



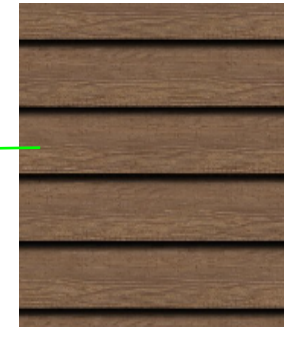
CS1 **CEMENTITIOUS LAP SIDING**
DARK NIGHT
(SW 6237) or similar



P1 **WOOD PANEL**
~~Opt 1- PHENOLIC PANEL~~
Opt 2- CEMENTITIOUS PANEL
Opt 3- REAL WOOD PANEL
or similar

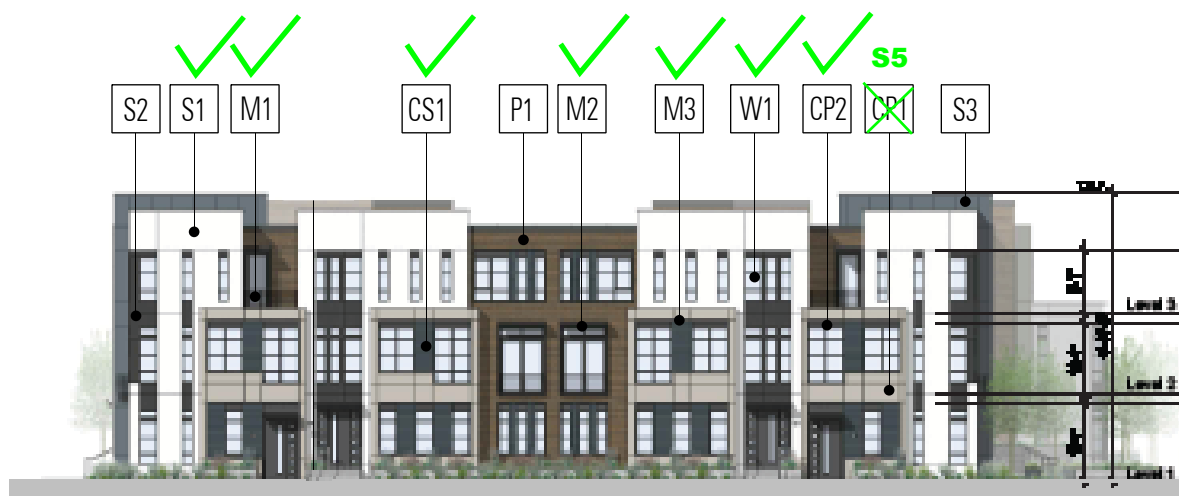


W1 **VINYL WINDOW**
ARCHITECTURAL
BRONZE or similar

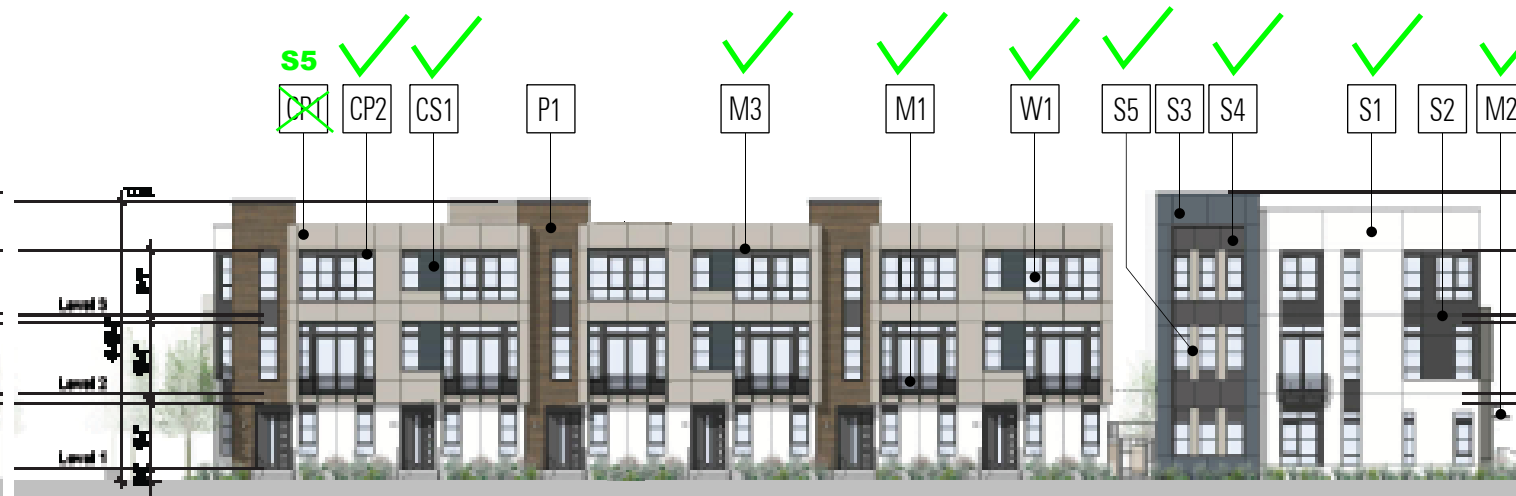


WOODTONE RUSTIC SERIES 6.25" LAP SIDING ON ALLURA OR HARDI
COLOR: MOUNTAIN CEDAR

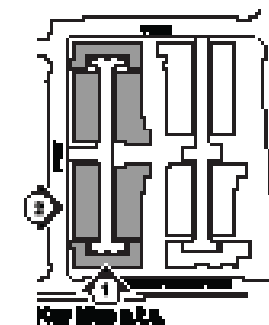
<https://woodtone.com/product/rusticseries/rusticseries-lap/>



1. Front Elevation



2. Left Elevation



ALAMEDA POINT BLOCK 6

ALAMEDA, CA

MATERIALS SELECTION