

2019 Annual Report on Transportation in Alameda



Transportation Choices Plan: Vision and Goals

- ***Vision:*** Sustain a high quality of life in Alameda by improving mobility
- **Goals:**
 - Reduce solo driving
 - Increase other modes
- **Objectives**
 - Safety
 - Equity
 - Congestion relief
 - Greenhouse gas emission reductions
- **39 Projects and Programs**

COMMUTE TO WORK DATA FOR ALAMEDA (2012-2016, workers age 16 and over)

Although 59% of Alameda's commuters drive alone to work...

... a combined 34% use carpools, public transportation or bike/walk to work.

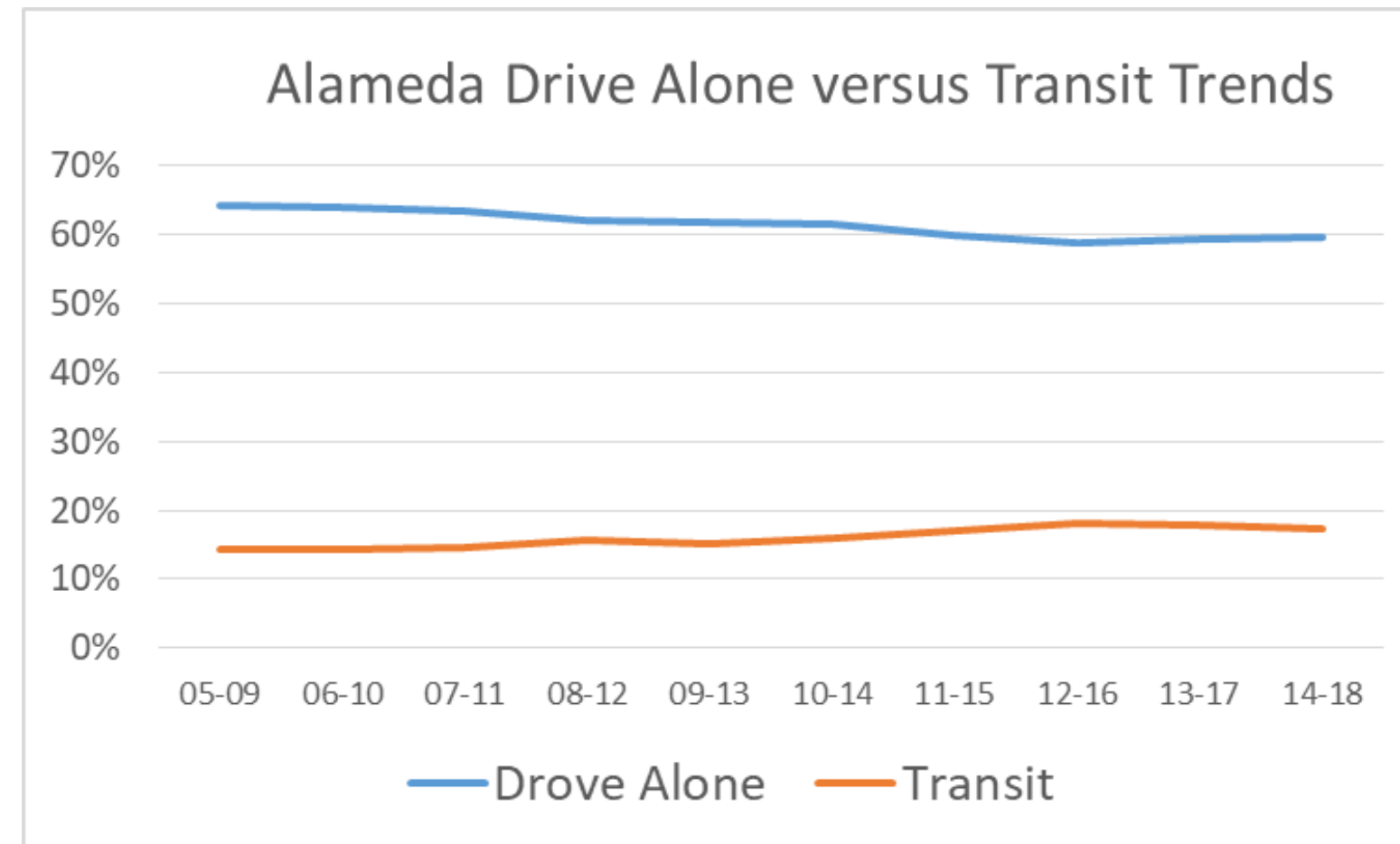


SOURCE: AMERICAN COMMUNITY SURVEY - CENSUS - TRENDS (2005-2016)



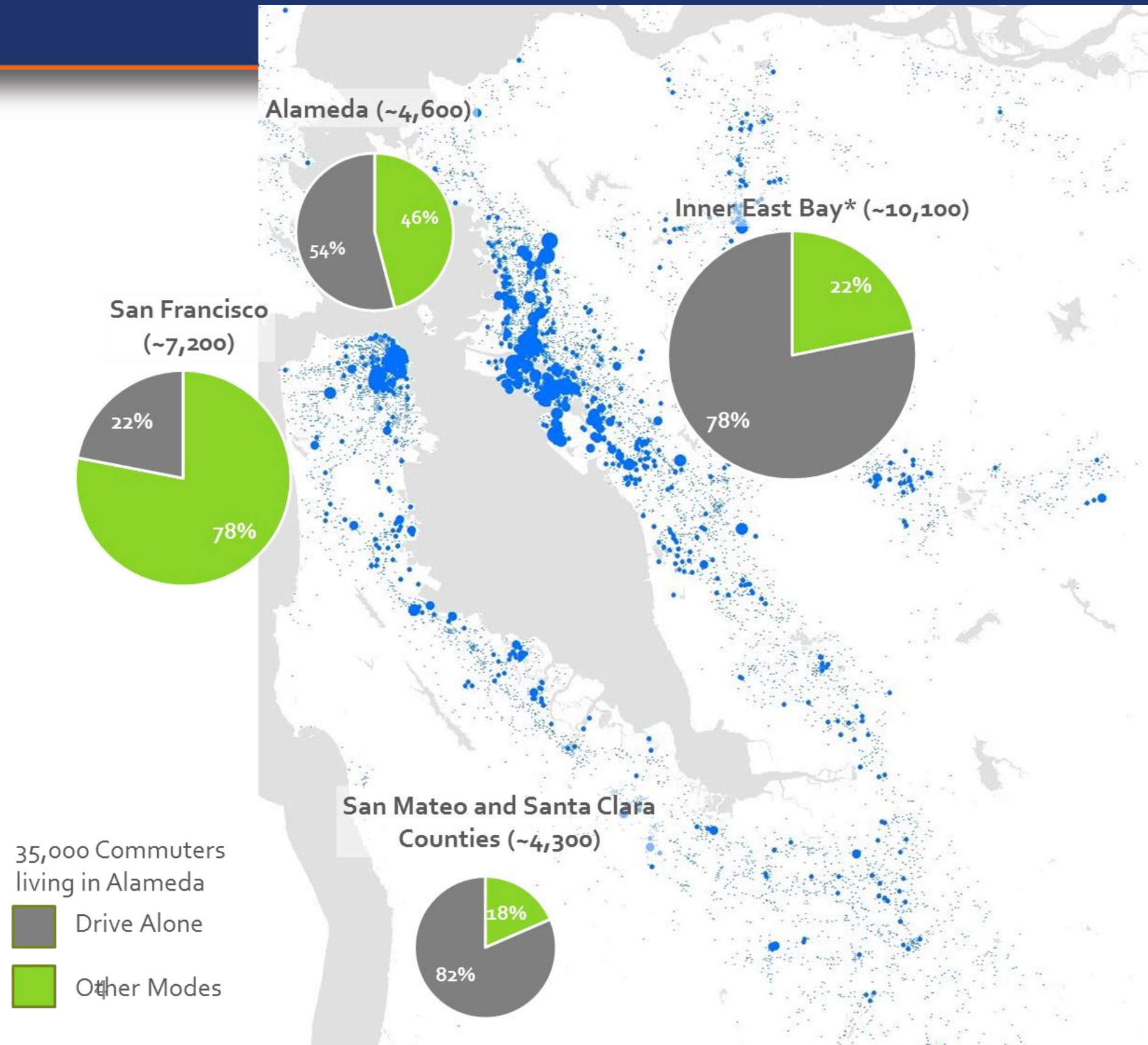
Alameda Transportation Trends

- Increase ferry ridership since 2013
- Switch to car share
- Electric vehicle purchases total 1,300



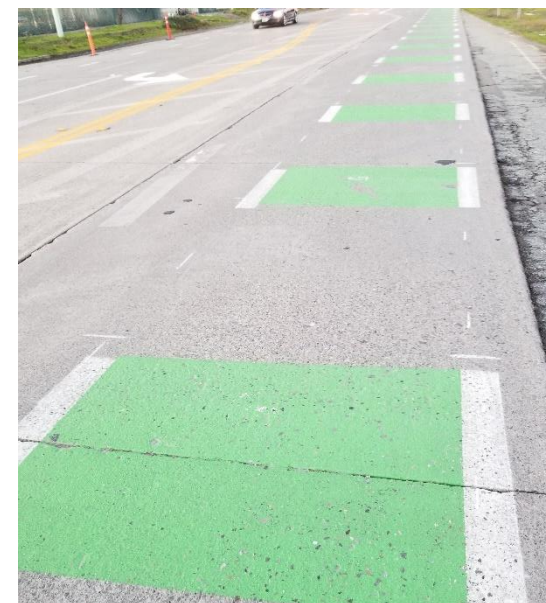
Understanding Travel Trends

- Almost 80% of inner East Bay commuters drive alone compared to over 20% of S.F. commuters
- Increase in commuters to San Francisco by 4,000 since 2005



2019 Key Accomplishments

- **Planning:** Initiated the Active Transportation Plan and the Vision Zero Plan
- **Bikeways:** Increased 1.9 miles of bike lanes and upgraded 0.6 miles to buffered lanes
- **Alameda Pt.** Groundbreaking of Seaplane Lagoon ferry terminal and redevelopment
- **Safety Corridors:**
 - Improved Pacific, Santa Clara, Broadway & Fernside
 - Restriped Main Street to ferry terminal
 - Approved concepts for Clement St, Otis Dr and Central Ave (Paden School to McKay Avenue)



2020 Priority Actions: Transit

- **Ferry:** Complete construction of Seaplane terminal, and WETA to begin service in August
- **Bus:** Increase frequency of AC Transit's Line 96 in west end, provide free bus passes and marketing
- **Paratransit:** Terminate taxi program, and increase free bus passes and door-through-door transportation service



RIDE THE
Alameda BART Shuttle

Ride **AC Transit Line 19** to BART at least once a week for one month!

- Super convenient
- Quick direct line through Alameda
- Use your EasyPass or Clipper Card
- Catch BART in both directions

actransit.org



AC Transit
EasyPass
Get Going • Start Saving!



2020 Priority Actions: Bike/Ped/Safety

- **Planning:** Complete Active Transportation and Vision Zero Plans
- **Cross Alameda Trail:** Complete west of Jean Sweeney Park; Begin construction at Del Monte; Complete Clement environmental and design
- **Bikeways:** Pacific Avenue and Miller-Sweeney Bridge
- **West End Crossing:** Complete feasibility study



2020 Priority Actions: Corridors

- ***Fruitvale Rail Bridge***: Authorize removal
- ***Carpools***: Initiate Constitution Way carpool lane planning and citywide expansion
- ***Maintenance***: Resurface – Bay Farm focus
- ***Safety***:
 - Central: City Council approval of Webster area and environmental clearance
 - Otis: Complete final design and construction
 - Traffic Calming: Evaluate and prioritize locations
- ***Adaptation***: For Doolittle Drive and Tubes projects, refine project concepts and costs



2020 Priority Actions: Citywide

- ***Parking***: Improve enforcement and adopt a parking management plan
- ***Electric Vehicles***: Raise awareness, provide incentives, electrify City fleet, provide more charging stations and streamline EV charger permit process
- ***AC Alert***: Increase subscribers
- ***Tsunamis***: Become Tsunami Ready Community
- ***Transportation Management Association***: Alameda TMA as Citywide TMA

