



OAKLAND ALAMEDA ACCESS PROJECT

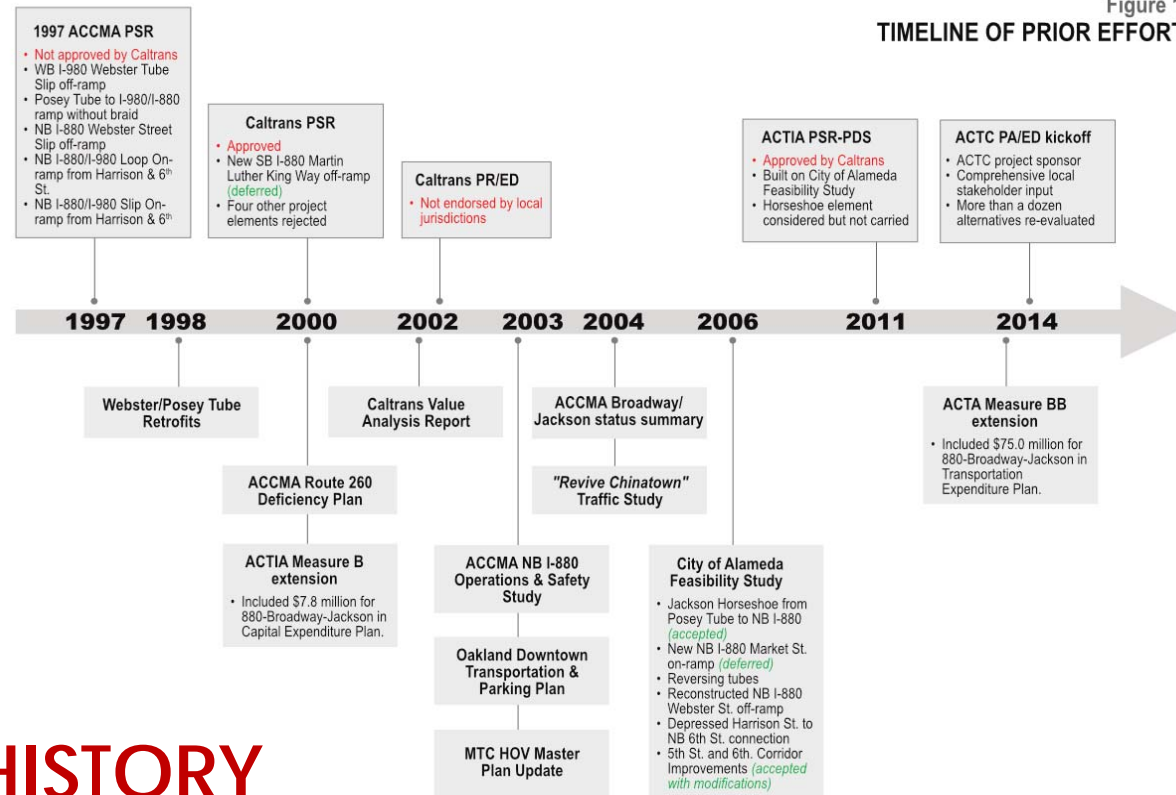
providing access and connections



November 17, 2020

Project Background

Figure 1.1
TIMELINE OF PRIOR EFFORTS



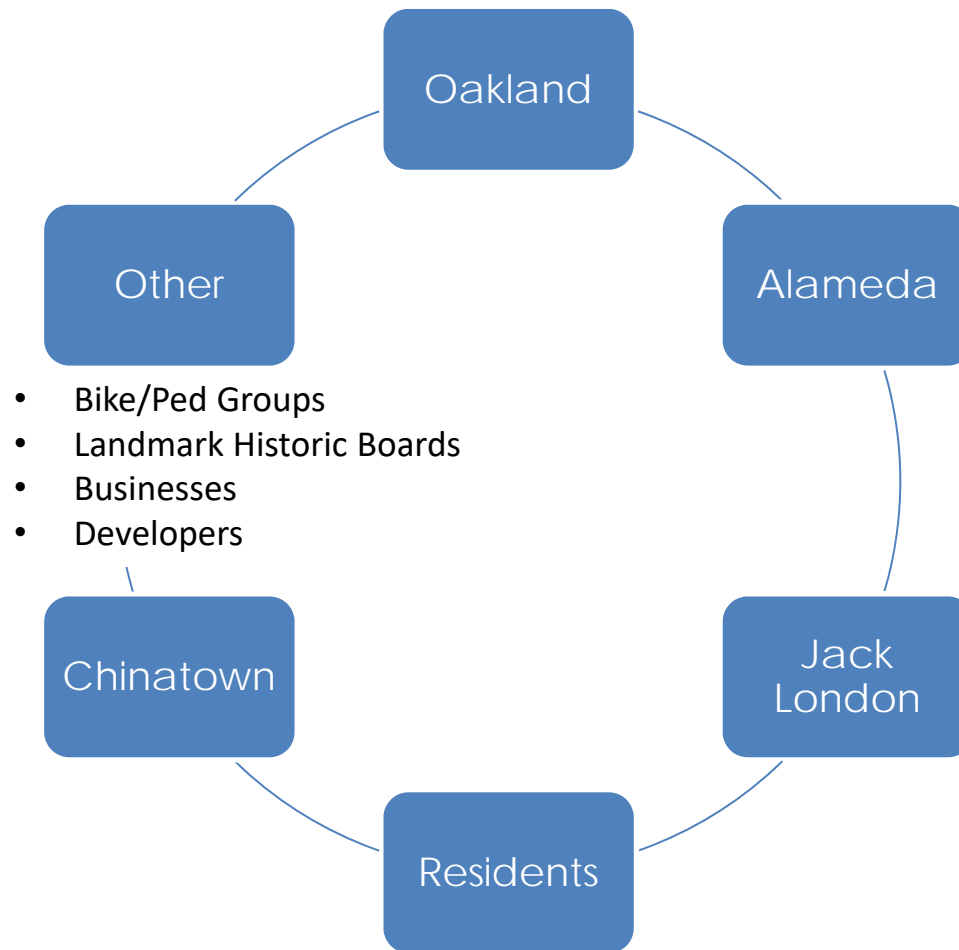
LONG HISTORY

- 30 Years of planning with 3 unsuccessful attempts
- Funding included in Measure B and BB
- HNTB selected for environmental phase, 2014
- Public Scoping Meeting, Sept 2017

Project Purpose & Need

- *Improve multimodal safety and reduce conflicts between regional and local traffic;*
- *Enhance bicycle and pedestrian accessibility and connectivity within the project study area;*
- *Improve mobility and accessibility for travelers between I-880, SR-260, City of Oakland downtown neighborhoods, and the City of Alameda;*
- *Reduce freeway-bound regional traffic and congestion on local roadways and in area neighborhoods*

Project Stakeholders



Schedule by Phase

Key Activities	Begin	End
Draft Environmental Document – Public Hearing	On-going	Fall 2020
Final Environmental Document**	Fall 2020	Mid 2021
Final Design	Early 2021	Late 2022
Right of Way	Early 2021	Late 2022
Construction	Mid 2023	Mid 2026

Cost and Funding Summary (\$x1,000)

Phase	Cost	Funding (Secured)	Funding (TBD)
Scoping	\$2,172	\$2,172	
Environmental	\$13,101	\$13,101	
Other Support	\$18,628	\$18,628	
<i>Subtotal</i>	<i>\$33,901</i>	<i>\$33,901</i>	
Right of Way & Support	\$4,800	\$4,800	
Construction	\$81,210	\$47,399	\$33,820
Total	\$119,920	\$86,100	\$33,820

Construction Phasing

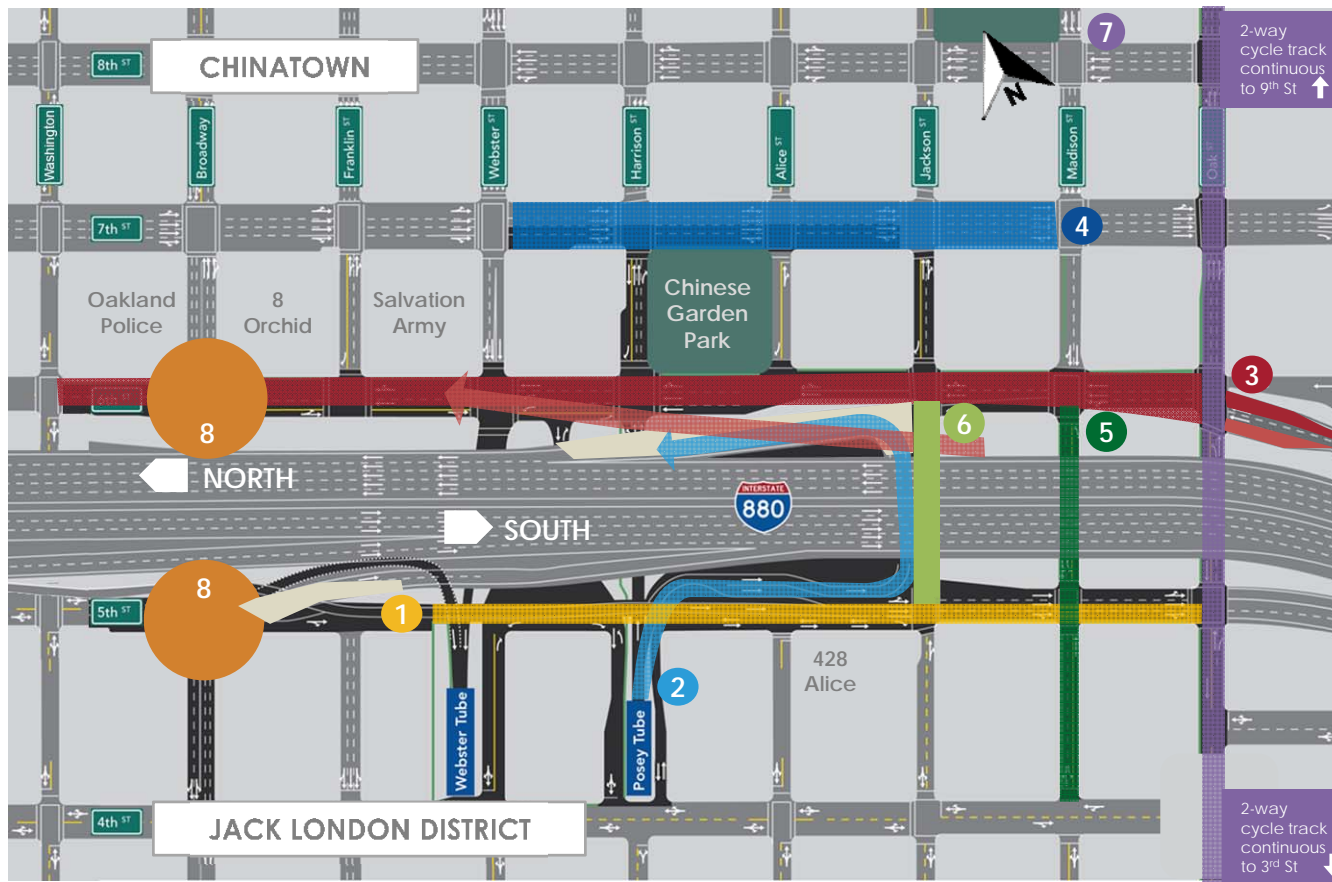
- If there is a shortfall in funding, the project can be phased to construct the “core project” separately from non-essential improvements

Phase	Description	Cost
A	Core Project	\$68,226,000
B	Chinatown Improvements	\$2,469,000
C	Oak Street Cycle Track	\$6,234,000
D	Webster Tube Walkway	\$7,410,000
E	Alameda Improvements	\$1,011,000
	Subtotal A-E	\$85,350,000
F	Full 6 th Street	\$34,553,000
	Total Project	\$119,903,000

Current Routes - Alameda to I-880/I-980



Major Roadway Improvements



- 1 **Realign** WB I-980 Jackson St off-ramp and reconstruct 5th St
- 2 **Construct** right-turn from Posey Tube onto Horseshoe to NB Jackson St on-ramp
- 3 **Widen** NB I-880 Oak off-ramp, **remove** NB I-880 Broadway off-ramp, **reconstruct** 6th St for multi-modal access (Oak St to Washington St)
- 4 **Restripe** 7th St and improve intersections
- 5 **Restripe** Madison for 2-way travel between 4th to 6th St
- 6 **Restripe** Jackson for 1-way between 5th to 6th
- 7 **Restripe** Oak St for multimodal access (2-way cycle track from 3rd to 9th St)
- 8 **Reconfigure** intersections at Broadway and 6th and 5th St

Videos

Posey Tube to Northbound I-880



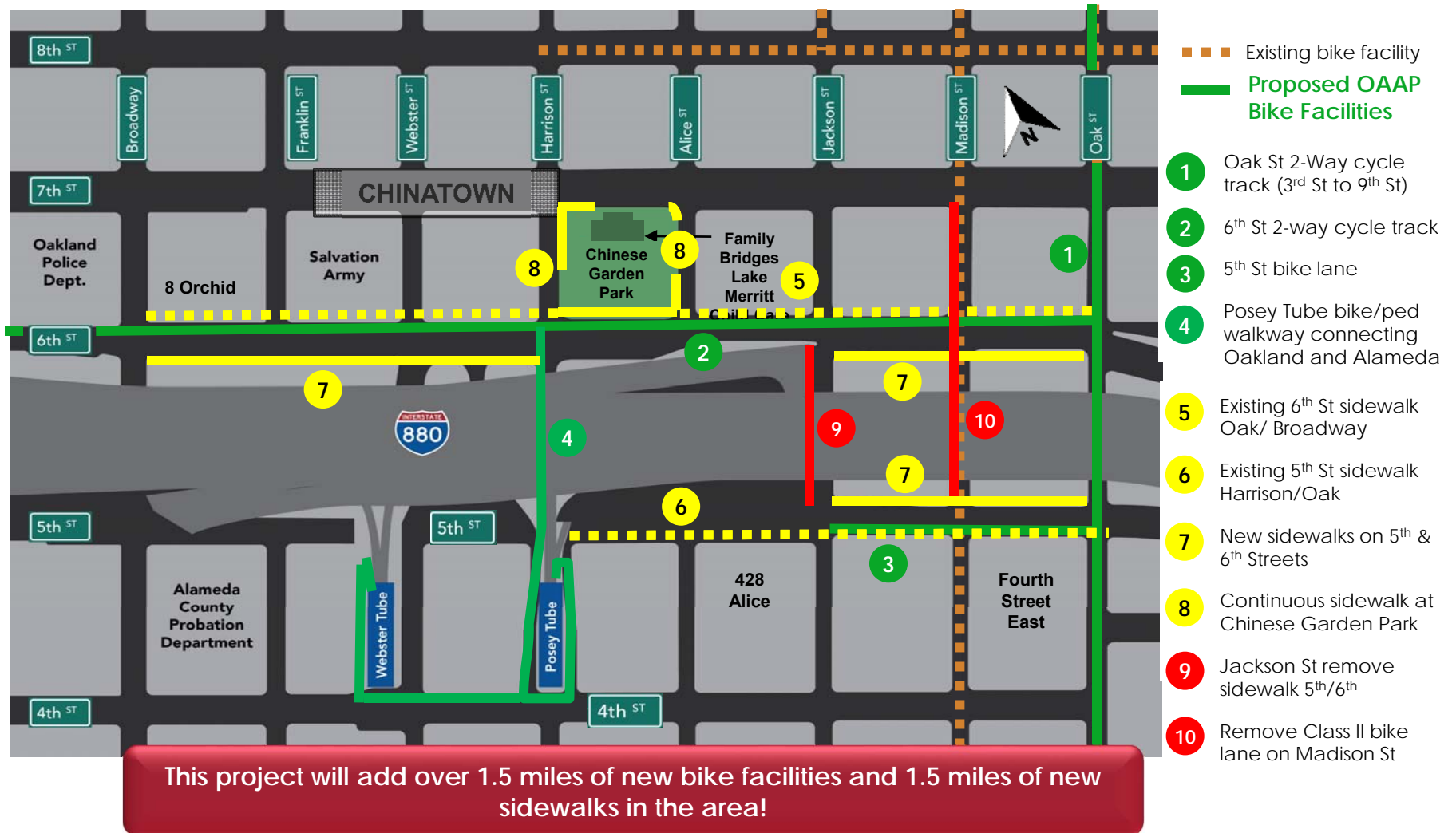
Jackson Off-Ramp to Webster Tube



Oak Street Off-Ramp & 6th Street

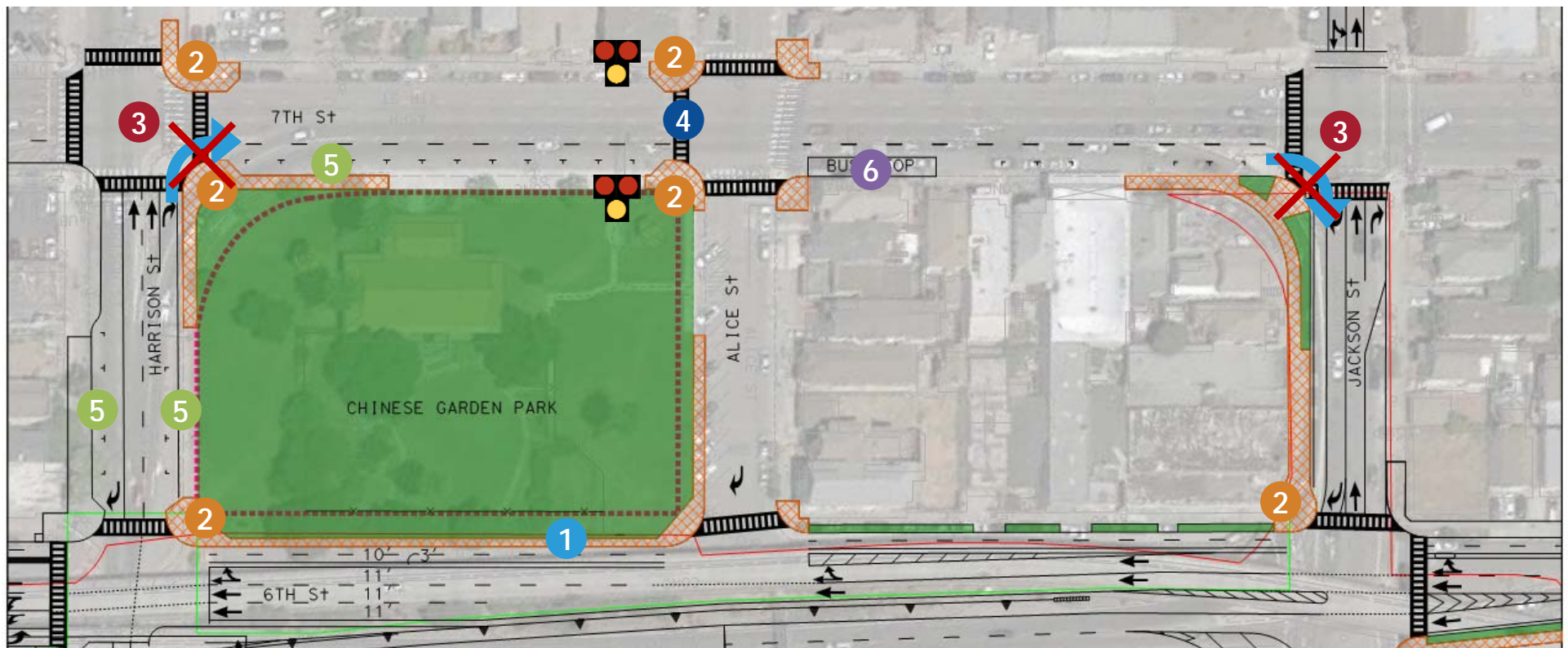


Bike/Ped Access & Safety Improvements Oakland



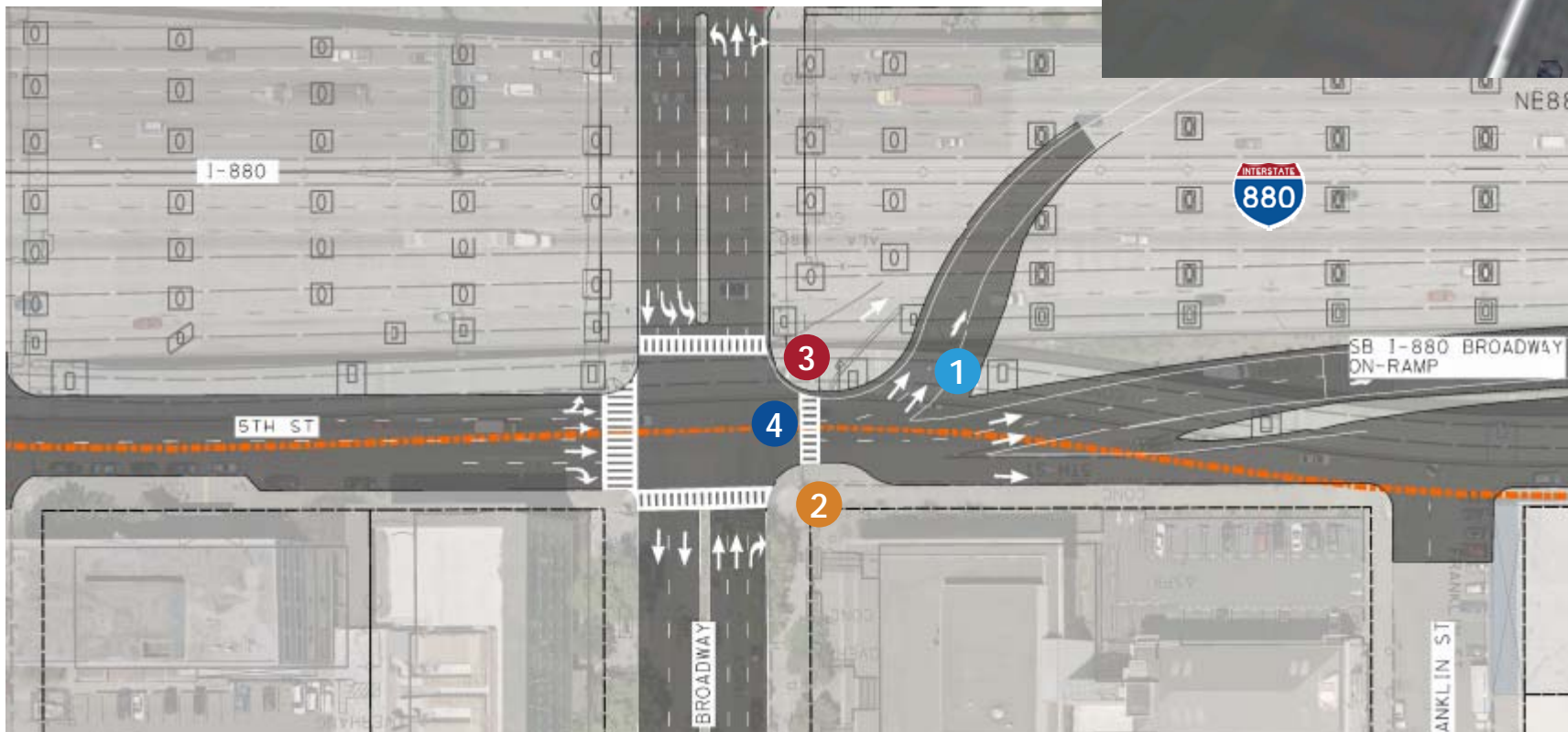
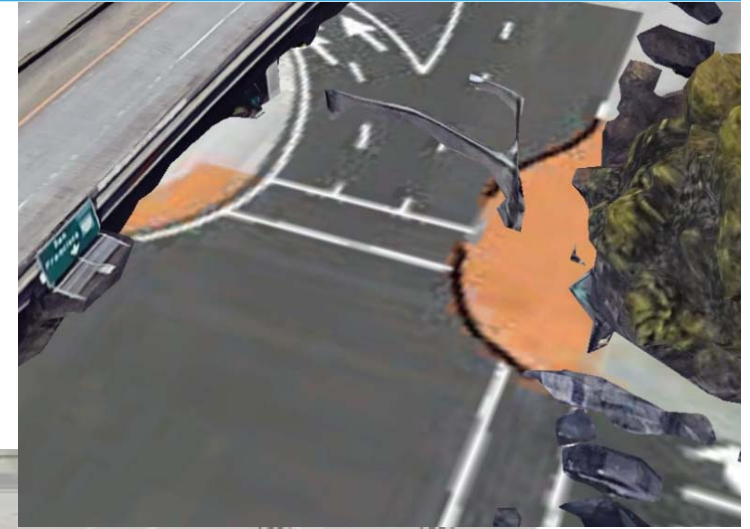
Chinese Garden Park

- 1 Continuous sidewalk around park
- 2 Sidewalk bulb-outs
- 3 Remove free right turns
- 4 Pedestrian Hybrid Beacon (PHB)
- 5 New parking spaces
- 6 New bus stop



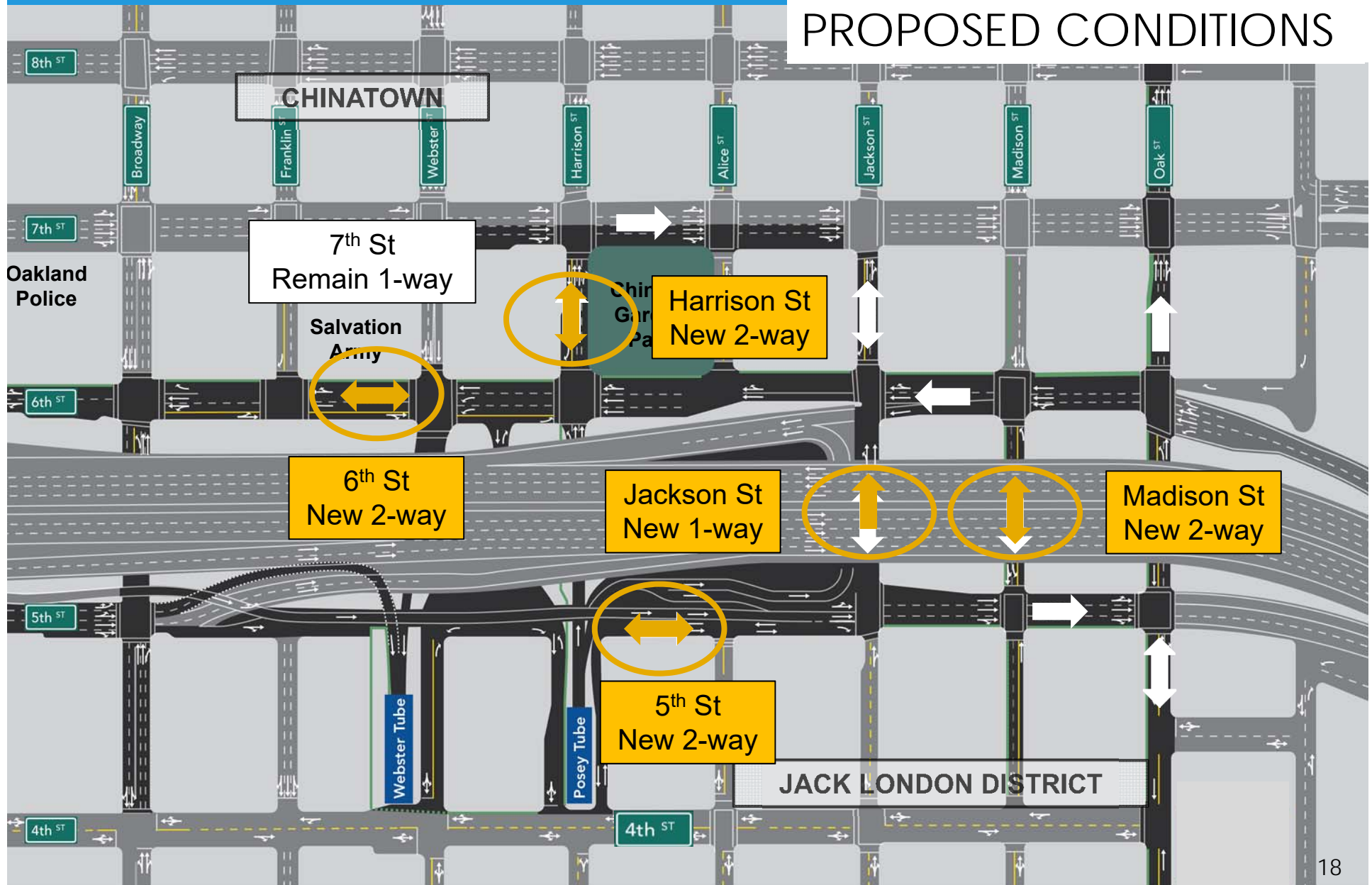
Safety & Operational Improvements at 5th St at Broadway

- 1 Webster Tube entrance shift east
- 2 Sidewalk bulb-outs
- 3 Pedestrian lead phase
- 4 Lane merge shifts from intersection to Webster Tube



One-Way to Two-Way Conversion

PROPOSED CONDITIONS



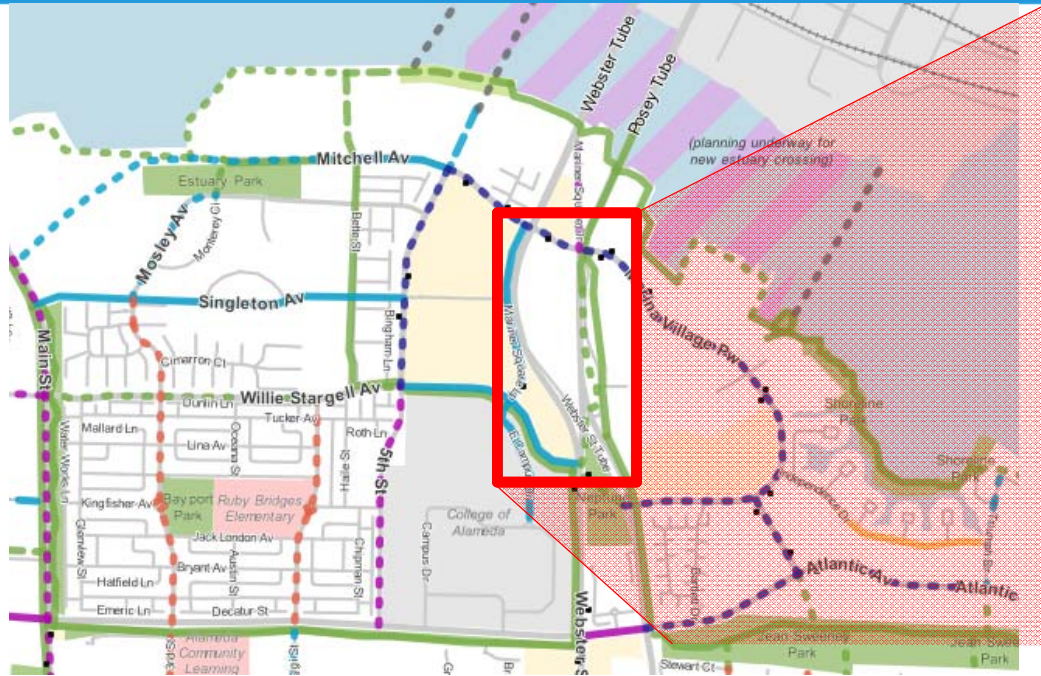
6th Street - Before



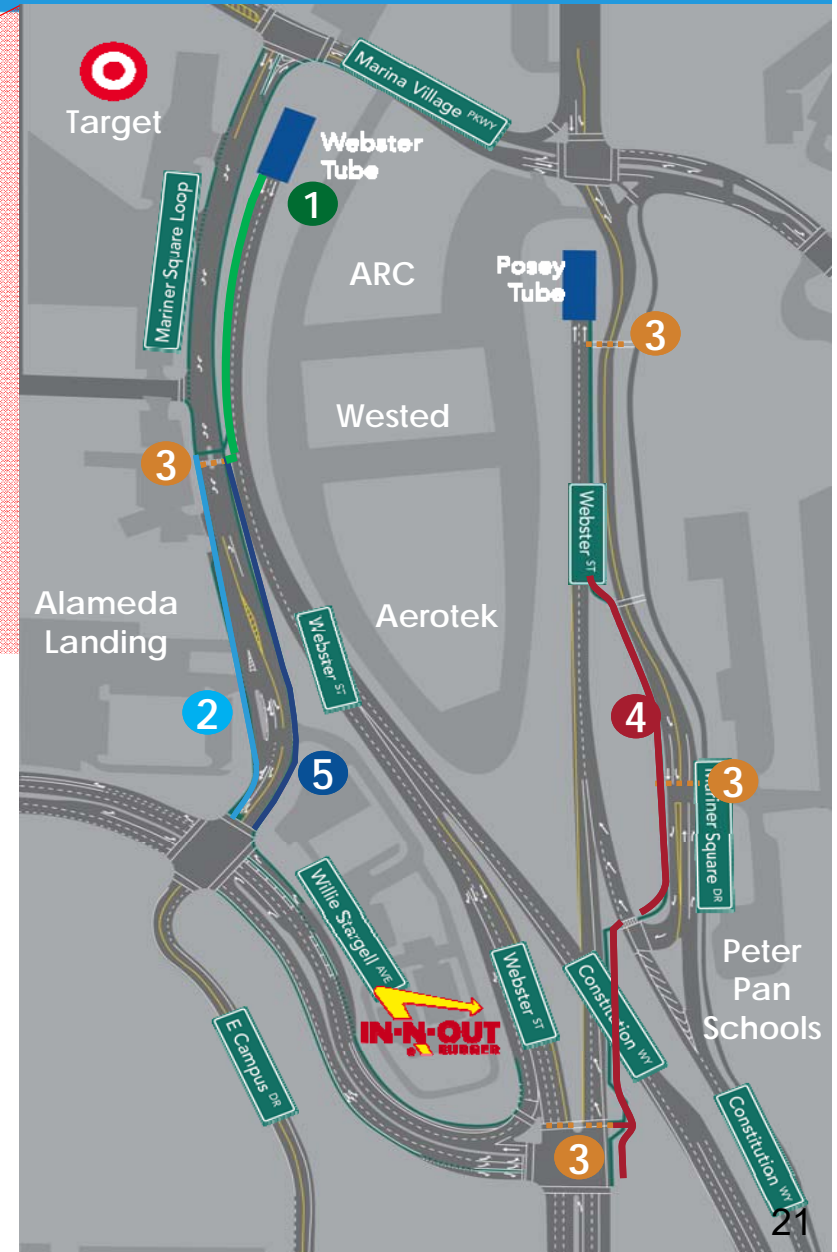
6th Street - After



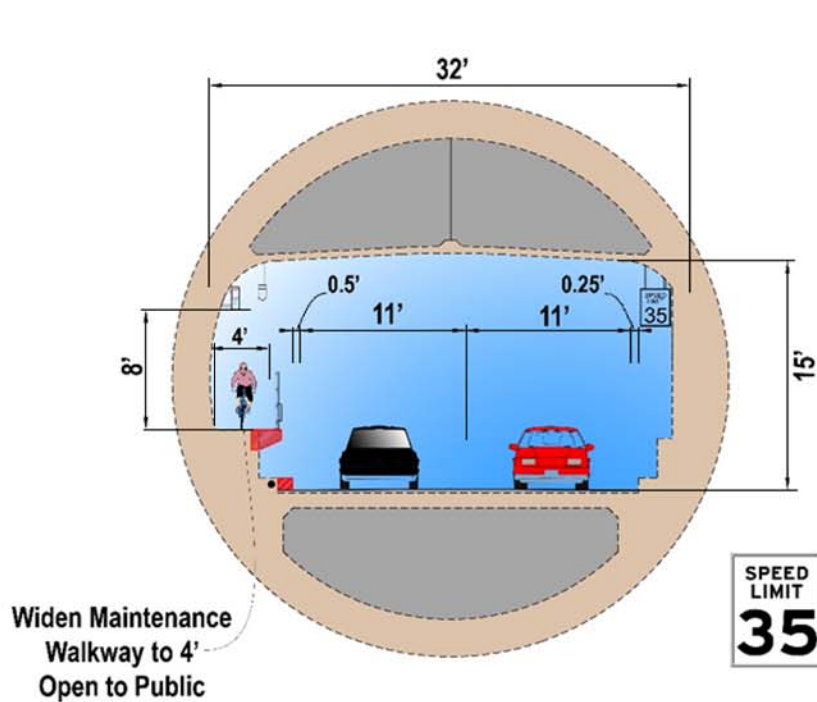
Bike/Ped Access & Safety Improvements Alameda



- ① Widen and open path through Webster Tube and along Webster St. connecting to Mariner Square Loop
- ② New Class II bike lane on Mariner Square Loop
- ③ Add crosswalks to connect ped/bike paths
- ④ Realign and widen path to 8 feet
- ⑤ Sidewalk extension on Mariner Square Loop

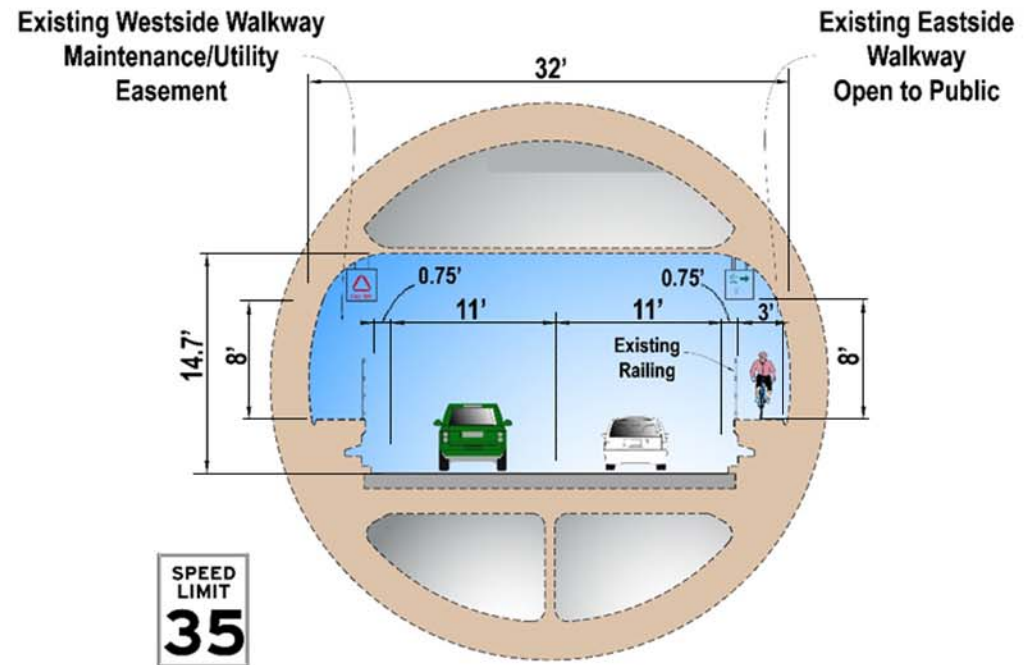


Tube Improvements



Webster Tube Cross-Section

Section D - Looking North Towards Oakland



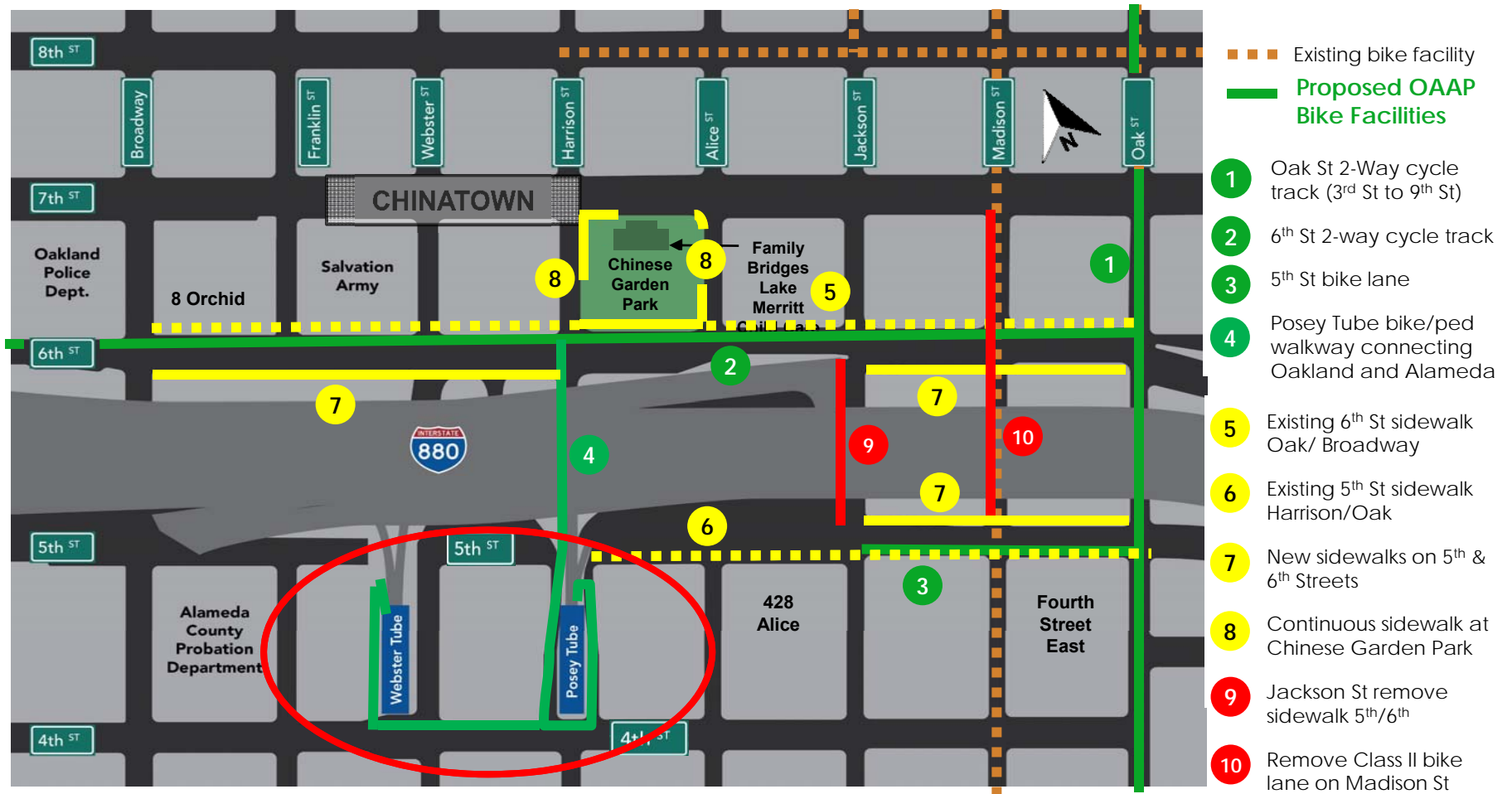
Posey Tube Cross-Section

Section D - Looking North Towards Oakland

Bike/Ped Bridge

- Detailed Feasibility Study:
 - *Feasible to build*
 - *Coast Guard: Meets stated navigational requirements*
 - *Cost: \$200 million*
 - *Estimated Demand: 5000 trips/day*

Connecting Alameda with Oakland



Proposed Routes – Alameda to I-880/I-980

Time Savings Per Vehicle



Proposed Routes – Oakland and I-880 to Alameda

Time Savings Per Vehicle



Alameda Construction Impacts

- A robust traffic management plan will be developed to summarize and identify all traffic impacts during construction.
- Temporary night closures will be in place on the Webster and Posey Tubes during construction.
- **Webster Tube** will be closed for 6 months between 10 PM and 5 AM to construct the new Webster Tube walkway and approach.
- Subsequently, **Posey Tube** (including the Posey Tube walkway) will be closed for 4 months between 10 PM and 5 AM to construct the Horseshoe and the new walkway approach.

Draft OAAP Environmental Document

- The Project's Draft Environmental Document is available from Caltrans, ACTC, or at www.oaklandalamedaaccessproject.com
- The public comment period is from **September 29, 2020 to November 30, 2020.**
 - *Comments may be submitted online, by email, phone, mail, or at the public hearing.*
- There was a virtual public hearing on **October 20, 2020.**

Ways to Comment



OAKLANDALAMEDAACCESSPROJECT.COM



Oakland.Alameda.Access@dot.ca.gov



Attention: Lindsay Vivian
Caltrans District 4, Office of Environmental Analysis
111 Grand Avenue
MS 8B
Oakland, CA 94612



(510) 880-4195