

# JEAN SWEENEY OPEN SPACE PARK

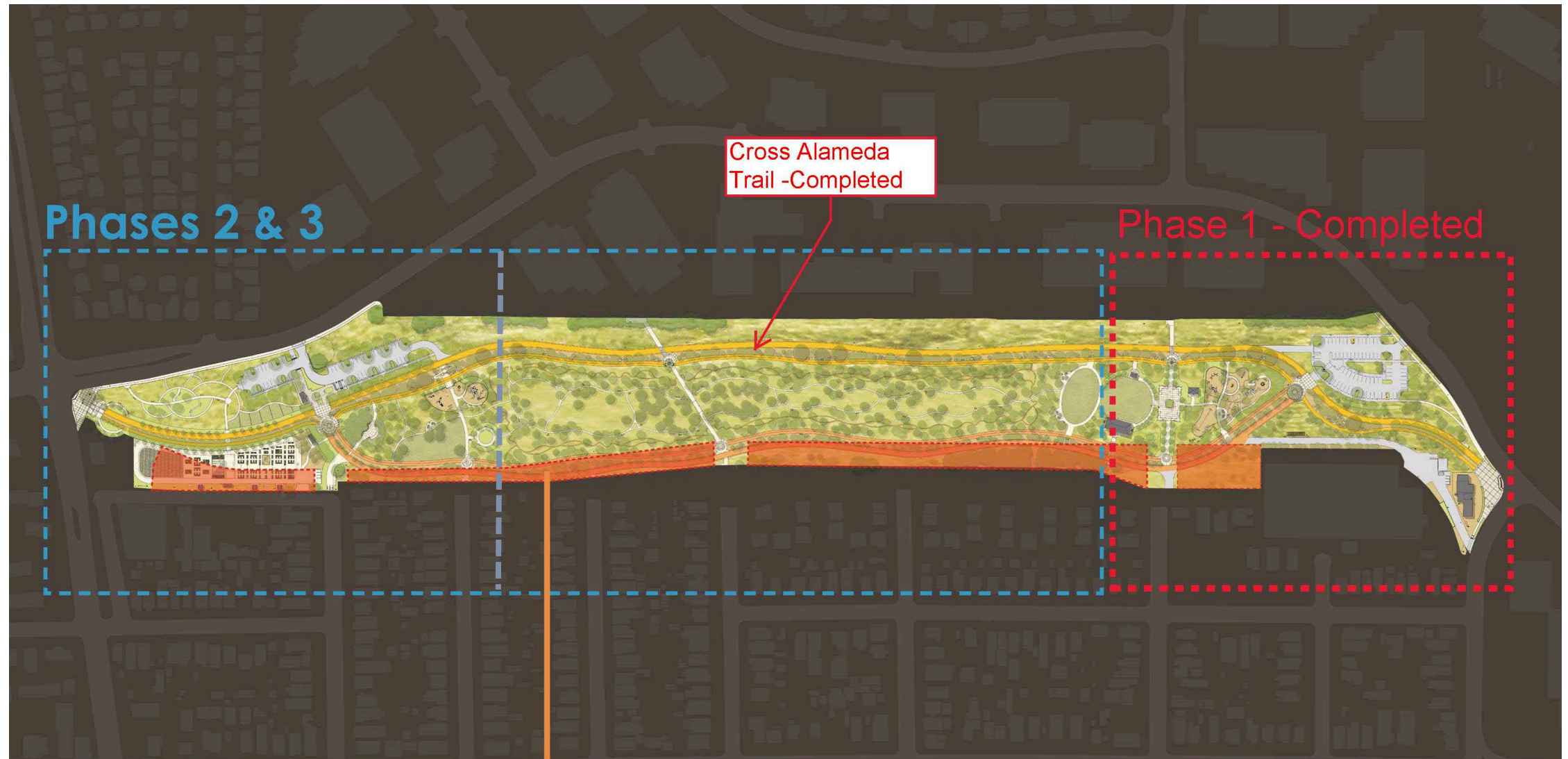
---

Recreation and Parks Commission

March 11, 2021

# Jean Sweeney Open Space Park Background

- 25-acre community park, former Alameda Beltline Railroad property
- Opened Cross Alameda Trail and eastern phase in December 2018
- Alameda's largest park & accessible as located near public transit hub
- Extensive community input in 2013 – 2014 to develop Master Plan with over 2,500 people participating
- Two more phases are undeveloped until funding is identified.
- Submitting a grant application for the highly competitive State Parks & Water Bond.



Phases 2 & 3

Cross Alameda  
Trail -Completed

Phase 1 - Completed

Non-City owned property

# Current Community Input

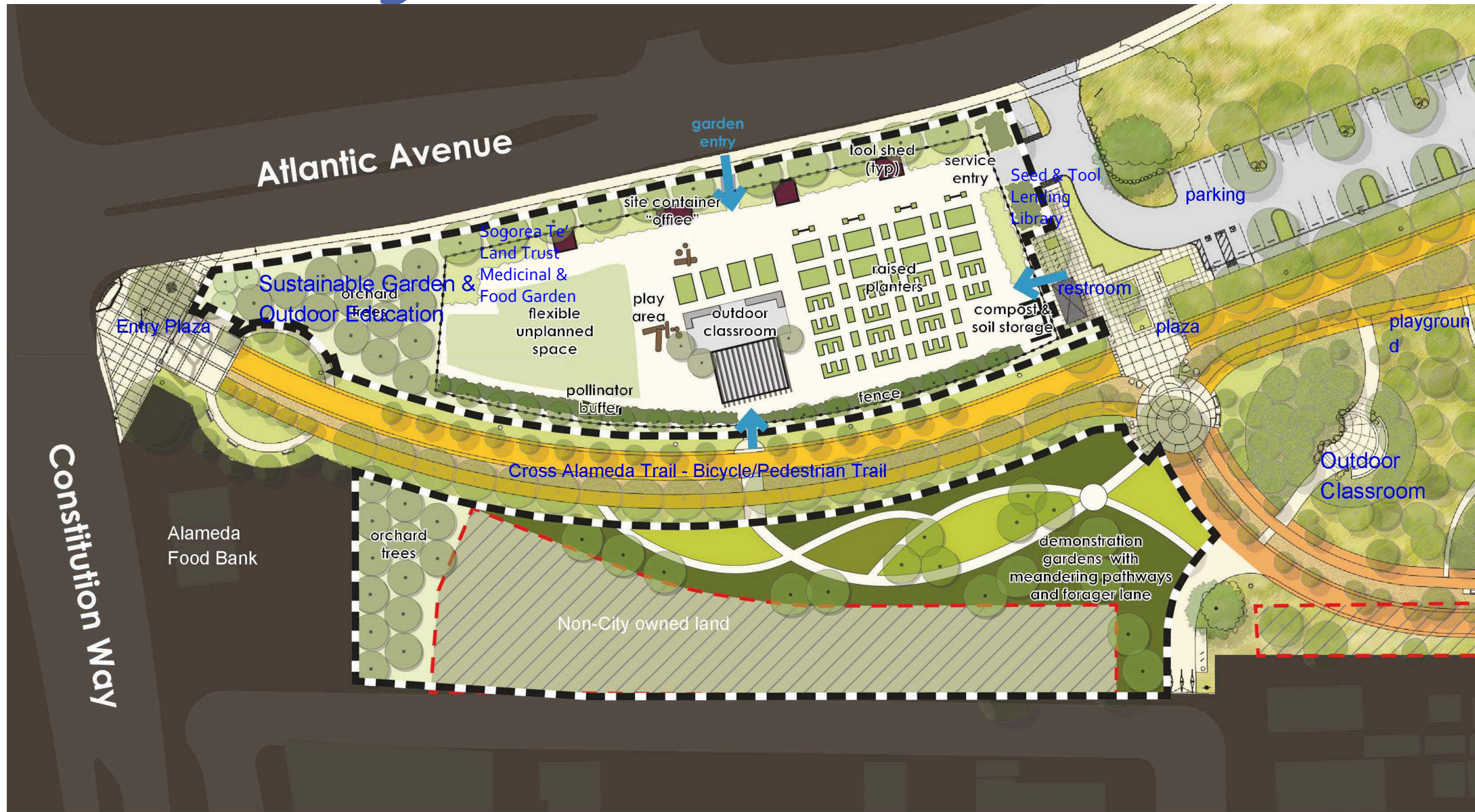
- Conducted more community outreach to “refresh” and update the Urban Agriculture Design to current needs and interests as well as revised boundaries.
- Online survey and Community Input Zoom Meeting in February 2021
- Significant community outreach for input with over 1,000 people participating.
- Received great information that will be incorporated. Seeking additional input from the Commission.

# Key Partnerships

- Community Garden and Sustainability Garden are primary components
- Partnerships include:
  - Alameda Food Bank
  - Alameda Backyard Growers
  - Alameda Free Library and Friends of the Library
  - Sogorea Te' Land Trust and Confederated Villages of Lisjan Ohlone
  - Alameda County Master Gardeners



# Urban Agriculture Phase



# North South Connections through Sweeney

- Planned connection points at 8<sup>th</sup> Street, Wood Street, St. Charles Street on the south border and through Marina Village Business Park to Triumph Drive and Challenger Drive to the north
- With Transportation staff submitted a \$292,000 grant application to the Alameda County Transportation Commission with a \$158,000 match from Measure B/BB funds for a total project cost of \$450,000