



## Alameda Police Department

March 3 at 9:56 AM · 🌐



### **\*\*UPDATE\*\***

After following up on a possible sighting by an alert resident, APD officers reunited Ms. Ay -en with her family.

Thank you for keeping your eyes peeled and assisting in her safe return home.

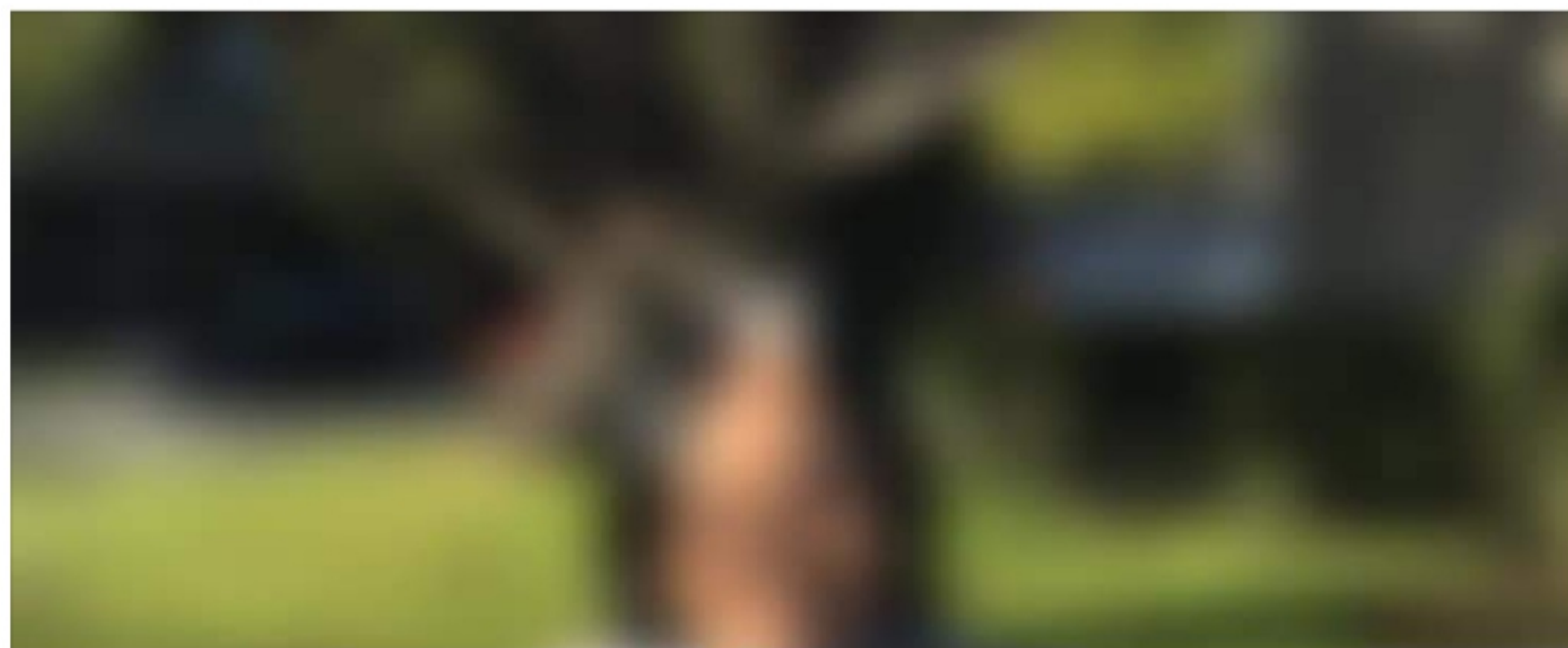
### **MISSING AT-RISK ELDERLY WOMAN**

Emma Ay-en is a 73-year-old Asian female, 5'0", 130 lbs, grey/black hair, brown eyes, and was last seen wearing a pink fleece sweater and grey pants (pants are pictured) in the area of Kingston Lane and Oleander Avenue around 5:30 this morning.

Ms. Ay-en has dementia and is known to travel on foot and on AC Transit buses.

APD was notified of Ms. Ay-en's status around 7:30 am and officers have been searching the area and have alerted AC Transit personnel to be on the lookout.

If seen please call APD immediately, 510.337.8340.



# **LOCATED**





## Alameda Police Department

March 9 at 12:53 PM · 🌐



Alameda PD's Traffic Unit and Parking Enforcement will ramp up patrol in school zones next week as classrooms move forward with re-opening.

As the [Alameda Unified School District](#) (AUSD) prepares to resume in-person education on March 15, 2021, we would like to take a moment to remind our community to please refrain from parking in the school loading zones and adhere to all posted parking signs.

Most importantly, please drive and roll responsibly. To help maintain social distancing, AUSD schools will engage in staggered start and dismissal times. We anticipate a daily increase in pedestrian and vehicular traffic around the schools between 8:00 – 9:10 am for student drop-off and between 10:45 – 11:40 am for dismissal/pick-up.

Roadway safety is everyone's responsibility – motorists, cyclists, and pedestrians must work together to work towards safer streets for all.

Motorists; eliminate distractions, reduce your speed, do not make illegal (& unsafe) turns/u-turns, and yield to pedestrians.

Cyclists; come to a complete stop at all controlled intersections, yield to pedestrians, and adhere to all rules-of-the-road.

Pedestrians; look left, look right, and left again before crossing the street and always make eye contact with motorists/cyclists before entering the roadway.

Happy Tuesday, Alameda. May we all arrive safely.







## Alameda Police Department

**\*\*UPDATE ON ROAD CLOSURES\*\***

As of 4:30 am, all lanes of traffic have reopened on Otis Drive.

We thank you again for your patience.

\*\*\*\*\*

As of 6:45 pm, eastbound lanes on Otis Drive have reopened. Westbound lanes, between High and Mound Street, will remain closed until further notice.

Thank you for your patience.

**⚠️ UNEXPECTED ROAD CLOSURE ⚠️**

Otis Drive, between Mound & High Street, is expected to be closed for an extended period of time due to a vehicle collision involving a powerline.

Crews are in route to make the necessary repairs and will advise when the roadway is safe to reopen. At this time, the cause of the collision has yet to be determined.

Please anticipate delays & use alternative routes. Thank you, Alameda.

[Mobile Uploads](#) · Mar 5 · 🌐

[View Full Size](#) · [More Options](#)





# Alameda Police Department



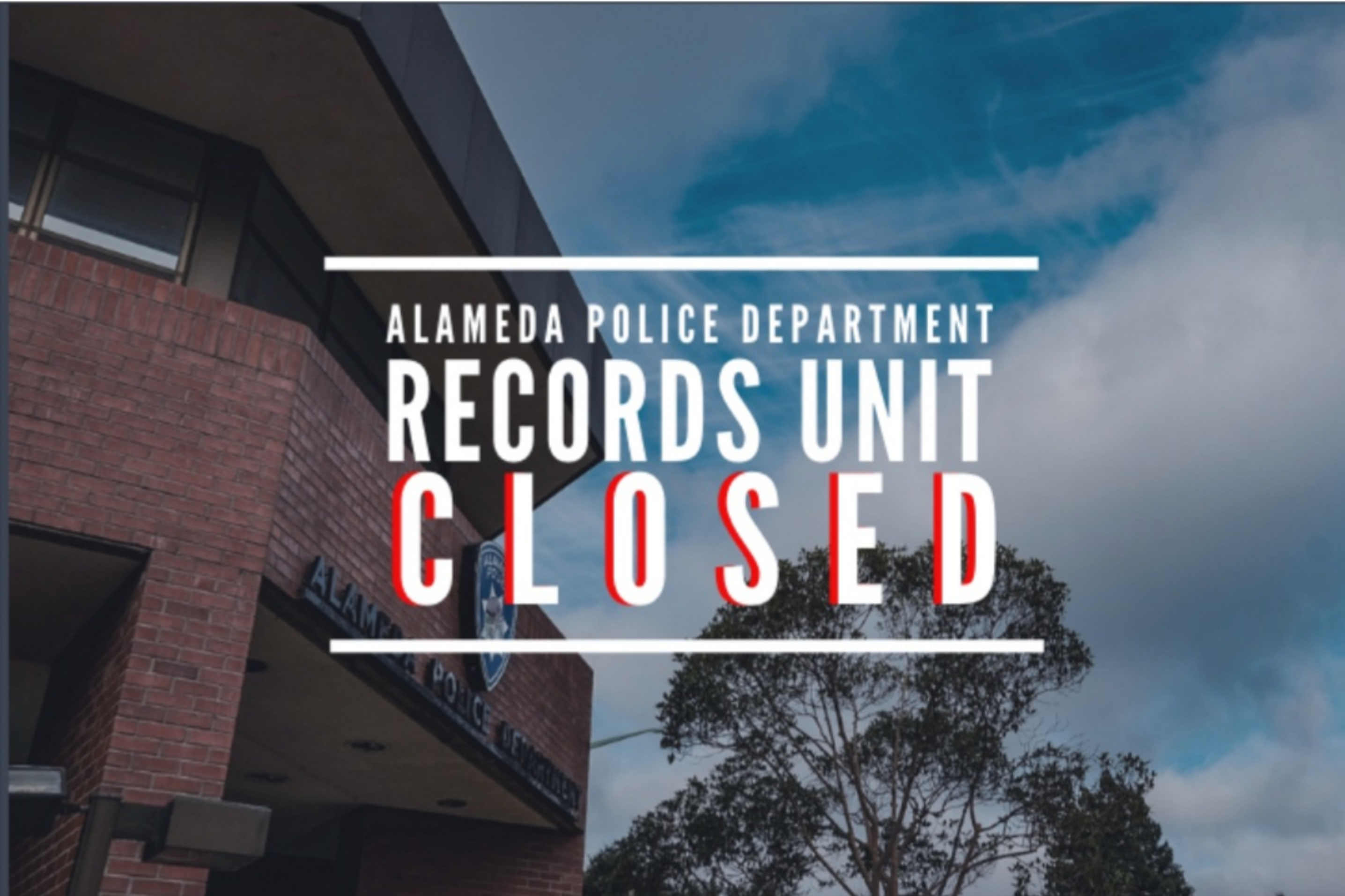
February 24 at 9:09 AM ·

The Alameda Police Department's Records Division will be closed today, February 24, 2021, for training.

To file an online report, pay or contest a citation, request a collision report, or obtain information on how to retrieve a towed vehicle, online services are still available.

<https://www.alamedaca.gov/Departments/Police-Department>

Records personnel will return to the office tomorrow, February 25 at 10:00 am, where they will be reachable by email or phone. Thank you for allowing us this valuable time to train and enhance our ability to better serve you. Happy Wednesday, Alameda.

A photograph of the Alameda Police Department building, a brick structure with a sign that reads "ALAMEDA POLICE DEPARTMENT". The building is partially obscured by a large, semi-transparent graphic.

ALAMEDA POLICE DEPARTMENT  
**RECORDS UNIT**  
**C L O S E D**



in a public place or on a public street.

While big high fives are due to our observant officers, we would also like to remind the public that California state law prohibits storing/transporting loaded firearms in accessible areas of your vehicle, including the glove compartment, bags, under the seat, etc. Should you need to transport a gun, secure it in an area that is not accessible by the driver or any occupants.

For your safety, the safety of others, and to reduce theft opportunities, transport guns in a locked trunk or a secured container that is fastened to the vehicle. For more information on gun safety in Alameda County, please visit

[https://www.alcoda.org/resources/gun\\_safety](https://www.alcoda.org/resources/gun_safety)

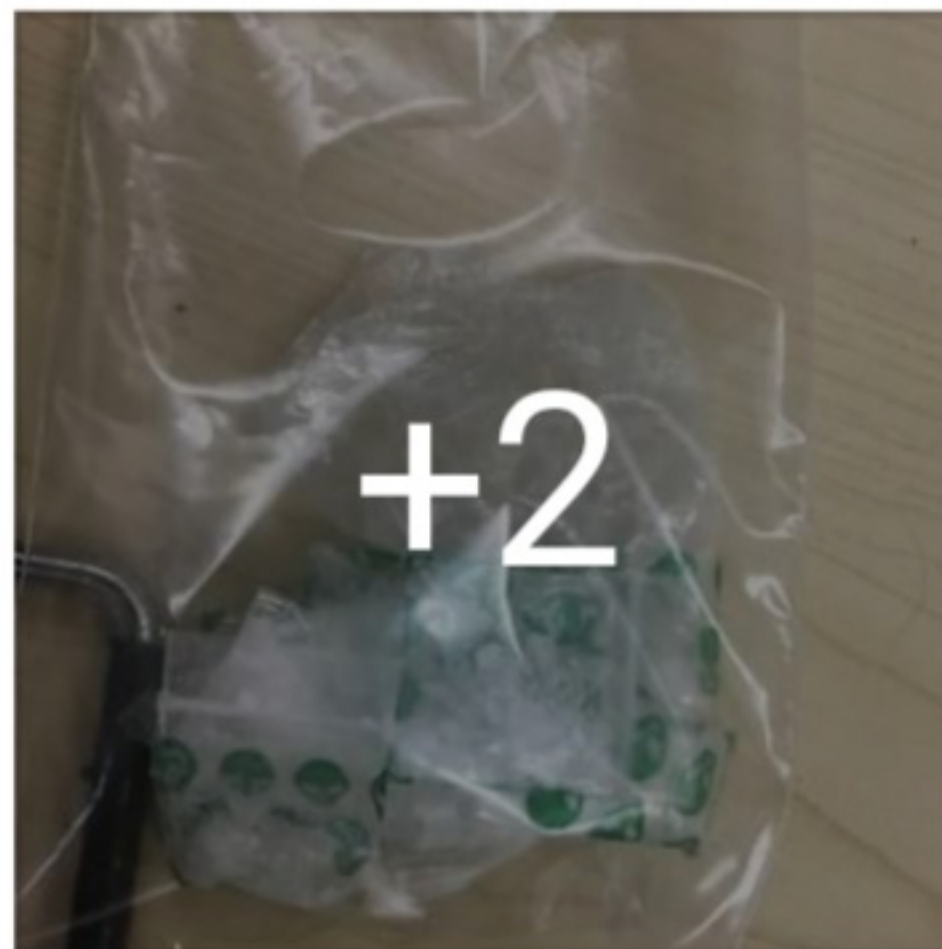






● ● ●

Around 4:30 this morning, an alert citizen heard a sawing noise outside of their residence. After looking out the window, the community member saw an unknown... [More](#)







A speeding violation leads to the removal of an unregistered firearm from Alameda streets.

Last week, Officer Stofle observed a vehicle speeding in the 700 block of Eagle Avenue and Constitution Way. As the vehicle approached a nearby senior living community, Officer Stofle conducted a traffic stop. The traffic investigation determined that the driver had a suspended license and was carrying a concealed, unregistered, and loaded firearm.

Ultimately, the vehicle was removed from the scene and the driver was taken into custody for being a felon in possession of a firearm, possession of an unregistered firearm, possession of a loaded and concealed firearm, and driving without a license.

This was the fourth illegal firearm Officer Stofle has safely removed from our community since the start of the year. We'd like to take a moment to applaud his hard work, sharp eyes, and commitment to making our island a safer place to live, work, and play.

For your safety and the safety of those around you, firearms should always be treated with respect and care. As a gun owner, steps must be taken to secure your firearm when not in use – consistent use of gun safes, safe transportation protocols, and the use of gun locks is strongly encouraged.

Gun locks are available for FREE at the Alameda Police Department. Please visit us Monday – Thursday, 7 am – 5 pm, to obtain a gun lock free of charge from the Crime Prevention Unit.





unknown vehicle fleeing the area.

After providing dispatchers with a vehicle description and direction of travel, officers began to canvas the area. While en route, officers observed a vehicle matching the description and initiated a traffic stop for their missing license plates.

As officers approached the vehicle, they observed the passenger holding drug paraphernalia and saw a catalytic converter and cutting tools on the floor. All three occupants were detained at the scene as officers conducted their investigation. During the investigation, one of the detained parties provided a confession and the alert resident positively identify the vehicle.

In addition to the catalytic converter and cutting tools, a search of the vehicle yielded burglary tools, methamphetamines, and other drug paraphilia. As a result of APD and the community working together, the three occupants, one of which who was on parole, were taken into custody for multiple offenses, including grand theft, attempted grand theft, and possession of stolen property.

With catalytic converter thefts becoming more prevalent throughout Bay Area cities, we would like to take a moment to remind the public to consider taking additional measures to protect your vehicle. Consider installing catalytic converter shields or other anti-theft devices, when possible park inside of your garage, and calibrate your car's alarm system to set off when vibration is detected. Don't forget, if you see (or hear) something, say something.





## Alameda Police Department

February 8 at 4:50 PM · 🌐



Help us best serve you.

The City of Alameda recently released the Steering Committee's report of preliminary recommendations for the future of public safety in Alameda.

To help the City of Alameda, and the Alameda Police Department, best serve our community, please take the time to review the Steering Committee's recommendations and share your feedback on the proposed suggestions by taking the city's community survey. Review recommendations and complete the survey, here. [www.alamedaca.gov/policing](http://www.alamedaca.gov/policing)

Thank you, Alameda.

# Take a Survey!



Read draft recommendations from the community-led Committee on Police Reform and Racial Equity: [www.alamedaca.gov/policing](http://www.alamedaca.gov/policing)

# &

Please share your feedback:

Call







## Alameda Police Department

February 3 at 11:01 AM · 🌐



Alameda Police Department's patrol officers go above and beyond to identify and arrest a human trafficking suspect.

In November 2020, Officer Leahy was one of the first to arrive on the scene of a suspicious circumstance call. A store employee had called in, stating a young female locked herself inside their businesses' bathroom.

Once on the scene, the first two responding officers assured the young woman, later determined to be 19 years old, it was safe to come out. After exiting the restroom, officers immediately noticed visible bruising and swelling to the young woman's face and body. As officers continued to talk with the woman, they discovered she was a victim of sex trafficking and...

[More](#)



 Call







## Alameda Police Department

February 2 at 2:17 PM · 🌐



The Alameda Police Department is seeking witnesses for a hit-and-run collision involving a pedestrian that occurred over the weekend.

On Saturday, January 30, at approximately 7:40 p.m. a female adult pedestrian was struck by a vehicle as she attempted to cross the street at the intersection of Park Street and Otis Drive. The victim sustained moderate injuries and was taken to a local hospital for treatment. The vehicle, only described as a white or possibly lighted colored sedan, made no attempts to stop and was last seen traveling eastbound on Otis Drive.

Since the incident, investigating officers are continuing to look into leads that may assist in identifying and locating the involved... [More](#)

**ALAMEDA POLICE DEPARTMENT**  
**INVESTIGATION**







## Alameda Police Department

January 27 at 6:32 PM · 🌐



Detective DiGiusto provides an update on a recent series of armed robberies and thefts that have targeted local Walgreens and CVS stores. In addition to his update, Detective DiGiusto provides tips on what to do if you are a witness to one of these crimes.

The full press release can be found on the City of Alameda's website,

<https://www.alamedaca.gov/Shortcut-Content/News-Media/Arrest-Made-in-String-of-Armed-Robberies-and-Thefts>







## Alameda Police Department

January 25 at 2:09 PM · 🌐



### \*\*\*SHOOTING INVESTIGATION UPDATE\*\*\*

Alameda Police detectives are continuing to investigate yesterday's shooting that left one person injured.

At this time, detectives have identified a possible vehicle involved with the shooting; however, we will not be releasing its description in order to preserve the integrity of the investigation.

There are a lot of theories that are being discussed on social media platforms. We want to caution those who are putting out information that has not been fully vetted or may be a hunch. We owe it to the victims in these types of cases to conduct a thorough and complete investigation to identify those responsible through factual information and reliable evidence.

We thank you for your patience as APD detectives continue to collect and review security footage, conduct follow up interviews, and review evidence to ensure those responsible are located and held accountable for their actions. We will continue to provide updates when we receive new information that can be shared.

**ALAMEDA POLICE DEPARTMENT**  
**INVESTIGATION**





Right now, Alameda Police detectives are following up on leads to find those responsible for a shooting that injured one person.

Today, at about 3:40 p.m., the Alameda Police Department received multiple calls about a shooting that had occurred in the 1400 block of Park Street. When officers arrived on the scene, they found a victim who had been struck by gunfire. The injured victim was immediately transported to a nearby hospital by the Alameda Fire Department, where it was determined the injury was non-life threatening. The teenage victim was with two other juveniles who were not struck by gunfire during the shooting.

The Alameda Police Department's Violent Crimes Unit was notified of the incident and was immediately called into work to take over the investigation.

We are in the early stages of this investigation, and many steps need to be taken to ensure those responsible are located and held accountable for their actions. Our investigators, along with our patrol officers, are in the process of interviewing witnesses, conducting an area check, and reviewing video surveillance. As soon as we can get an accurate vehicle description or description of those responsible for the shooting, we will release it to the public for your assistance. We will continue to update our community as we learn more information.

If anyone has information about the shooting, we encourage you to please contact the Alameda Police Department Violent Crimes Unit at 510-337-8336.