

Exhibit 3: FY 2021-22 and FY 2022-23 Capital Improvement Program Budget Summary

Note: All values in \$1,000s

	CIP Number	Total Funding		100 General Fund		302 Construction Improvement Tax		211 Gas Tax		212 Road Maintenance	
		2021-22	2022-23	2021-22	2022-23	2021-22	2022-23	2021-22	2022-23	2021-22	2022-23
BEGINNING FUND BALANCES		\$38,028	\$37,101	\$	\$	\$2,309	\$992	\$48	\$91	\$874	\$574
Revenue		\$44,419	\$48,699	\$1,200	\$1,200	\$1,200	\$1,200	\$2,009	\$2,009	\$1,550	\$1,550
Transfer to Operations		\$13,439	\$13,623					\$1,016	\$992		
Available Capital Funds		\$69,007	\$72,177	\$1,200	\$1,200	\$3,509	\$2,192	\$1,041	\$1,107	\$2,424	\$2,124
Pavement, Lighting and Urban Forest											
Pavement Management	C1100	\$5,101	\$4,016							\$1,850	\$1,850
Signs, Pavement Markings, and Curb Painting	C1200	\$200	\$200								
Traffic Signals and Systems	C1300	\$600	\$600								
Traffic Signals - Pedestrian Safety	C1300 (sub)	\$273	\$								
Sidewalks	C1400	\$1,000	\$1,000								
Street, Park and Parking Lot Lighting	C1600	\$300	\$300	\$300	\$300						
Conduit Replacement	C1600 (sub)	\$1,000	\$			\$1,000					
Urban Forest - Trees & Landscape Maintenance	C1700	\$2,414	\$2,414	\$150	\$150	\$1,317	\$1,317	\$900	\$900		
Urban Forest Master Plan Update	C1700 (sub)	\$175	\$175	\$175	\$175						
Subtotal		\$11,063	\$8,705	\$625	\$625	\$2,317	\$1,317	\$900	\$900	\$1,850	\$1,850
Sanitary Sewer											
Sewer Rehabilitation	C2100	\$7,400	\$7,650								
Subtotal		\$7,400	\$7,650	\$	\$	\$	\$	\$	\$		
Storm Water, Lagoons and Shoreline											
Storm Water Management	C3100	\$350	\$960								
Storm Water Pump Stations	C3200	\$450	\$								
Green Infrastructure and Trash Capture	C3300	\$50	\$140								
Lagoon Maintenance	C3400	\$250	\$250			\$200	\$200				
Shoreline Maintenance	C3500	\$51	\$51								
Subtotal		\$1,151	\$1,401	\$	\$	\$200	\$200	\$	\$		
Buildings and Facilities											
City Buildings	C4100	\$1,717	\$1,817								
ADA Transition Plan	C4100 (sub)	\$100	\$								
Littlejohn Park Rec Center Rebuild	C5550	\$250	\$								
Doolittle Landfill - Flare & Piping Replacement	C7600	\$500	\$								
Alameda Point Big Whites Painting	C7520	\$1,400	\$1,400								
Subtotal		\$3,967	\$3,217	\$	\$	\$	\$	\$	\$		
Parks											
Park Maintenance Improvements	C5100	\$556	\$383	\$450	\$275						
Playground Replacements	C5200	\$	\$475		\$250						
Park Pathway Repair & Replacement	C1500	\$50	\$50	\$50	\$50						
East End/Harbor Bay Dog Park	C5530	\$75	\$	\$75							
Subtotal		\$681	\$908	\$575	\$575	\$	\$	\$	\$		
Transportation System Enhancements											
Street Safety	C6100	\$250	\$250					\$50	\$50		
Safe Routes to School Infrastructure	C6200	\$268	\$100								
Active Transportation Plan Implementation Project	C6300	\$100	\$500								
Traffic Signal Modernization and Smart Cities	C6400	\$	\$100								
Central Ave Safety Improvements	C6560	\$	\$12,200								
Clement Ave CAT - Grand to Broadway	C6520	\$5,172	\$								
Lincoln / Marshall Safety Improvements	C6570	\$200	\$								
West End Bicycle/Pedestrian Crossing	C6590	\$1,355	\$200								
Subtotal		\$7,345	\$13,350	\$	\$	\$	\$	\$50	\$50		
Sea Level Rise Adaptation and Other Projects											
Veterans Court & BFI Seawall	C7110	\$100	\$								
Northern Shoreline - Posey/Webster Tubes	C7130	\$200	\$								
Subtotal		\$300	\$	\$	\$	\$	\$	\$	\$		
TOTAL CAPITAL EXPENDITURES		\$31,907	\$35,231	\$1,200	\$1,200	\$2,517	\$1,517	\$950	\$950	\$1,850	\$1,850
Remaining Fund Balance		\$37,101	\$36,946	\$	\$	\$992	\$675	\$91	\$157	\$574	\$274

Exhibit 3: FY 2021-22 and FY 2022-23 Capital Improvement Program Budget Summary

Note: All values in \$1,000s

	CIP Number	Total Funding		230		231		232		233	
		2021-22	2022-23	Measure B LSR		Measure BB LSR		Measure B Bike/Ped		Measure BB Bike/Ped	
BEGINNING FUND BALANCES		\$38,028	\$37,101	2021-22	2022-23	2021-22	2022-23	2021-22	2022-23	2021-22	2022-23
Revenue		\$44,419	\$48,699	\$1,618	\$1,618	\$2,495	\$2,495	\$202	\$202	\$270	\$270
Transfer to Operations		\$13,439	\$13,623			\$425	\$425				
Available Capital Funds		\$69,007	\$72,177	\$2,302	\$2,248	\$3,619	\$3,265	\$316	\$362	\$389	\$531
Pavement, Lighting and Urban Forest											
Pavement Management	C1100	\$5,101	\$4,016	\$250	\$900	\$1,200	\$600				
Signs, Pavement Markings, and Curb Painting	C1200	\$200	\$200	\$200	\$200						
Traffic Signals and Systems	C1300	\$600	\$600	\$350	\$350						
Traffic Signals - Pedestrian Safety	C1300 (sub)	\$273	\$			\$24					
Sidewalks	C1400	\$1,000	\$1,000	\$400	\$400	\$600	\$600				
Street, Park and Parking Lot Lighting	C1600	\$300	\$300								
Conduit Replacement	C1600 (sub)	\$1,000	\$								
Urban Forest - Trees & Landscape Maintenance	C1700	\$2,414	\$2,414								
Urban Forest Master Plan Update	C1700 (sub)	\$175	\$175								
Subtotal		\$11,063	\$8,705	\$1,200	\$1,850	\$1,824	\$1,200	\$	\$	\$	\$
Sanitary Sewer											
Sewer Rehabilitation	C2100	\$7,400	\$7,650								
Subtotal		\$7,400	\$7,650	\$	\$	\$	\$	\$	\$	\$	\$
Storm Water, Lagoons and Shoreline											
Storm Water Management	C3100	\$350	\$960								
Storm Water Pump Stations	C3200	\$450	\$								
Green Infrastructure and Trash Capture	C3300	\$50	\$140								
Lagoon Maintenance	C3400	\$250	\$250								
Shoreline Maintenance	C3500	\$51	\$51								
Subtotal		\$1,151	\$1,401	\$	\$	\$	\$	\$	\$	\$	\$
Buildings and Facilities											
City Buildings	C4100	\$1,717	\$1,817								
ADA Transition Plan	C4100 (sub)	\$100	\$								
Littlejohn Park Rec Center Rebuild	C5550	\$250	\$								
Doolittle Landfill - Flare & Piping Replacement	C7600	\$500	\$								
Alameda Point Big Whites Painting	C7520	\$1,400	\$1,400								
Subtotal		\$3,967	\$3,217	\$	\$	\$	\$	\$	\$	\$	\$
Parks											
Park Maintenance Improvements	C5100	\$556	\$383								
Playground Replacements	C5200	\$	\$475								
Park Pathway Repair & Replacement	C1500	\$50	\$50								
East End/Harbor Bay Dog Park	C5530	\$75	\$								
Subtotal		\$681	\$908	\$	\$	\$	\$	\$	\$	\$	\$
Transportation System Enhancements											
Street Safety	C6100	\$250	\$250								
Safe Routes to School Infrastructure	C6200	\$268	\$100			\$100	\$100	\$46		\$38	
Active Transportation Plan Implementation Project	C6300	\$100	\$500			\$100	\$500				
Traffic Signal Modernization and Smart Cities	C6400	\$	\$100				\$100				
Central Ave Safety Improvements	C6560	\$	\$12,200		\$80		\$1,000				
Clement Ave CAT - Grand to Broadway	C6520	\$5,172	\$	\$472				\$110		\$90	
Lincoln / Marshall Safety Improvements	C6570	\$200	\$			\$200					
West End Bicycle/Pedestrian Crossing	C6590	\$1,355	\$200								
Subtotal		\$7,345	\$13,350	\$472	\$80	\$400	\$1,700	\$156	\$	\$128	\$
Sea Level Rise Adaptation and Other Projects											
Veterans Court & BFI Seawall	C7110	\$100	\$								
Northern Shoreline - Posey/Webster Tubes	C7130	\$200	\$			\$200					
Subtotal		\$300	\$	\$	\$	\$200	\$	\$	\$	\$	\$
TOTAL CAPITAL EXPENDITURES		\$31,907	\$35,231	\$1,672	\$1,930	\$2,424	\$2,900	\$156	\$	\$128	\$
Remaining Fund Balance		\$37,101	\$36,946	\$630	\$318	\$1,195	\$365	\$160	\$362	\$261	\$531

Exhibit 3: FY 2021-22 and FY 2022-23 Capital Improvement Program Budget Summary

Note: All values in \$1,000s

	CIP Number	Total Funding		265 Parking Meter		261 Waste Fund		213 Vehicle Registration Fee		217 Open Space Fund (Maintenance Only)	
		2021-22	2022-23	2021-22	2022-23	2021-22	2022-23	2021-22	2022-23	2021-22	2022-23
BEGINNING FUND BALANCES		\$38,028	\$37,101	\$406	\$279	\$1,750	\$2,095	\$31	\$44	\$23	\$23
Revenue		\$44,419	\$48,699	\$1,170	\$1,403	\$663	\$663	\$334	\$334	\$15	\$15
Transfer to Operations		\$13,439	\$13,623	\$1,297	\$1,297						
Available Capital Funds		\$69,007	\$72,177	\$279	\$385	\$2,413	\$2,759	\$364	\$378	\$38	\$38
Pavement, Lighting and Urban Forest											
Pavement Management	C1100	\$5,101	\$4,016			\$318	\$318	\$320			
Signs, Pavement Markings, and Curb Painting	C1200	\$200	\$200								
Traffic Signals and Systems	C1300	\$600	\$600								
Traffic Signals - Pedestrian Safety	C1300 (sub)	\$273	\$								
Sidewalks	C1400	\$1,000	\$1,000								
Street, Park and Parking Lot Lighting	C1600	\$300	\$300								
Conduit Replacement	C1600 (sub)	\$1,000	\$								
Urban Forest - Trees & Landscape Maintenance	C1700	\$2,414	\$2,414							\$15	\$15
Urban Forest Master Plan Update	C1700 (sub)	\$175	\$175								
Subtotal		\$11,063	\$8,705	\$	\$	\$318	\$318	\$320	\$	\$15	\$15
Sanitary Sewer											
Sewer Rehabilitation	C2100	\$7,400	\$7,650								
Subtotal		\$7,400	\$7,650	\$	\$	\$	\$	\$	\$	\$	\$
Storm Water, Lagoons and Shoreline											
Storm Water Management	C3100	\$350	\$960								
Storm Water Pump Stations	C3200	\$450	\$								
Green Infrastructure and Trash Capture	C3300	\$50	\$140								
Lagoon Maintenance	C3400	\$250	\$250								
Shoreline Maintenance	C3500	\$51	\$51								
Subtotal		\$1,151	\$1,401	\$	\$	\$	\$	\$	\$	\$	\$
Buildings and Facilities											
City Buildings	C4100	\$1,717	\$1,817								
ADA Transition Plan	C4100 (sub)	\$100	\$								
Littlejohn Park Rec Center Rebuild	C5550	\$250	\$								
Doolittle Landfill - Flare & Piping Replacement	C7600	\$500	\$								
Alameda Point Big Whites Painting	C7520	\$1,400	\$1,400								
Subtotal		\$3,967	\$3,217	\$	\$	\$	\$	\$	\$	\$	\$
Parks											
Park Maintenance Improvements	C5100	\$556	\$383								
Playground Replacements	C5200	\$	\$475								
Park Pathway Repair & Replacement	C1500	\$50	\$50								
East End/Harbor Bay Dog Park	C5530	\$75	\$								
Subtotal		\$681	\$908	\$	\$	\$	\$	\$	\$	\$	\$
Transportation System Enhancements											
Street Safety	C6100	\$250	\$250								
Safe Routes to School Infrastructure	C6200	\$268	\$100								
Active Transportation Plan Implementation Project	C6300	\$100	\$500								
Traffic Signal Modernization and Smart Cities	C6400	\$	\$100								
Central Ave Safety Improvements	C6560	\$	\$12,200					\$320			
Clement Ave CAT - Grand to Broadway	C6520	\$5,172	\$								
Lincoln / Marshall Safety Improvements	C6570	\$200	\$								
West End Bicycle/Pedestrian Crossing	C6590	\$1,355	\$200								
Subtotal		\$7,345	\$13,350	\$	\$	\$	\$	\$	\$320	\$	\$
Sea Level Rise Adaptation and Other Projects											
Veterans Court & BFI Seawall	C7110	\$100	\$								
Northern Shoreline - Posey/Webster Tubes	C7130	\$200	\$								
Subtotal		\$300	\$	\$	\$	\$	\$	\$	\$	\$	\$
TOTAL CAPITAL EXPENDITURES		\$31,907	\$35,231	\$	\$	\$318	\$318	\$320	\$320	\$15	\$15
Remaining Fund Balance		\$37,101	\$36,946	\$279	\$385	\$2,095	\$2,441	\$44	\$58	\$23	\$23

Exhibit 3: FY 2021-22 and FY 2022-23 Capital Improvement Program Budget Summary

Note: All values in \$1,000s

	CIP Number	Total Funding		305 Development Impact Fee - Transportation		264 Stormwater		501 Sewer Services		603 Facilities Replacement	
		2021-22	2022-23	2021-22	2022-23	2021-22	2022-23	2021-22	2022-23	2021-22	2022-23
BEGINNING FUND BALANCES		\$38,028	\$37,101	\$1,276	\$1,276	-\$238	\$34	\$28,458	\$28,524	\$625	\$923
Revenue		\$44,419	\$48,699	\$450	\$450	\$5,316	\$5,316	\$12,447	\$12,883	\$4,077	\$4,227
Transfer to Operations		\$13,439	\$13,623			\$4,093	\$4,120	\$4,645	\$4,647	\$1,963	\$2,142
Available Capital Funds		\$69,007	\$72,177	\$1,726	\$1,726	\$984	\$1,230	\$36,260	\$36,760	\$2,740	\$3,008
Pavement, Lighting and Urban Forest											
Pavement Management	C1100	\$5,101	\$4,016					\$336	\$348		
Signs, Pavement Markings, and Curb Painting	C1200	\$200	\$200								
Traffic Signals and Systems	C1300	\$600	\$600	\$250	\$250						
Traffic Signals - Pedestrian Safety	C1300 (sub)	\$273	\$								
Sidewalks	C1400	\$1,000	\$1,000								
Street, Park and Parking Lot Lighting	C1600	\$300	\$300								
Conduit Replacement	C1600 (sub)	\$1,000	\$								
Urban Forest - Trees & Landscape Maintenance	C1700	\$2,414	\$2,414								
Urban Forest Master Plan Update	C1700 (sub)	\$175	\$175								
Subtotal		\$11,063	\$8,705	\$250	\$250	\$	\$	\$336	\$348	\$	\$
Sanitary Sewer											
Sewer Rehabilitation	C2100	\$7,400	\$7,650					\$7,400	\$7,650		
Subtotal		\$7,400	\$7,650	\$	\$	\$	\$	\$7,400	\$7,650	\$	\$
Storm Water, Lagoons and Shoreline											
Storm Water Management	C3100	\$350	\$960			\$350	\$960				
Storm Water Pump Stations	C3200	\$450	\$			\$450					
Green Infrastructure and Trash Capture	C3300	\$50	\$140			\$50	\$140				
Lagoon Maintenance	C3400	\$250	\$250								
Shoreline Maintenance	C3500	\$51	\$51								
Subtotal		\$1,151	\$1,401	\$	\$	\$850	\$1,100	\$	\$	\$	\$
Buildings and Facilities											
City Buildings	C4100	\$1,717	\$1,817							\$1,717	\$1,817
ADA Transition Plan	C4100 (sub)	\$100	\$							\$100	
Littlejohn Park Rec Center Rebuild	C5550	\$250	\$								
Doolittle Landfill - Flare & Piping Replacement	C7600	\$500	\$								
Alameda Point Big Whites Painting	C7520	\$1,400	\$1,400								
Subtotal		\$3,967	\$3,217	\$	\$	\$	\$	\$	\$	\$1,817	\$1,817
Parks											
Park Maintenance Improvements	C5100	\$556	\$383								
Playground Replacements	C5200	\$	\$475								
Park Pathway Repair & Replacement	C1500	\$50	\$50								
East End/Harbor Bay Dog Park	C5530	\$75	\$								
Subtotal		\$681	\$908	\$	\$	\$	\$	\$	\$	\$	\$
Transportation System Enhancements											
Street Safety	C6100	\$250	\$250	\$200	\$200						
Safe Routes to School Infrastructure	C6200	\$268	\$100								
Active Transportation Plan Implementation Project	C6300	\$100	\$500								
Traffic Signal Modernization and Smart Cities	C6400	\$	\$100								
Central Ave Safety Improvements	C6560	\$	\$12,200								
Clement Ave CAT - Grand to Broadway	C6520	\$5,172	\$								
Lincoln / Marshall Safety Improvements	C6570	\$200	\$								
West End Bicycle/Pedestrian Crossing	C6590	\$1,355	\$200								
Subtotal		\$7,345	\$13,350	\$200	\$200	\$	\$	\$	\$	\$	\$
Sea Level Rise Adaptation and Other Projects											
Veterans Court & BFI Seawall	C7110	\$100	\$			\$100					
Northern Shoreline - Posey/Webster Tubes	C7130	\$200	\$								
Subtotal		\$300	\$	\$	\$	\$100	\$	\$	\$	\$	\$
TOTAL CAPITAL EXPENDITURES		\$31,907	\$35,231	\$450	\$450	\$950	\$1,100	\$7,736	\$7,998	\$1,817	\$1,817
Remaining Fund Balance		\$37,101	\$36,946	\$1,276	\$1,276	\$34	\$130	\$28,524	\$28,762	\$923	\$1,191

Exhibit 3: FY 2021-22 and FY 2022-23 Capital Improvement Program Budget Summary

Note: All values in \$1,000s

	CIP Number	Total Funding		Miscellaneous Revenue Sources		Grants		Misc. and Grant Revenue Notes
		2021-22	2022-23	2021-22	2022-23	2021-22	2022-23	
BEGINNING FUND BALANCES		\$38,028	\$37,101					
Revenue		\$44,419	\$48,699	\$2,389	\$1,641	\$7,015	\$11,225	
Transfer to Operations		\$13,439	\$13,623					
Available Capital Funds		\$69,007	\$72,177	\$2,389	\$1,641	\$7,015	\$11,225	
Pavement, Lighting and Urban Forest								
Pavement Management	C1100	\$5,101	\$4,016			\$827		OBAG2 Grant
Signs, Pavement Markings, and Curb Painting	C1200	\$200	\$200					
Traffic Signals and Systems	C1300	\$600	\$600					
Traffic Signals - Pedestrian Safety	C1300 (sub)	\$273	\$			\$249		HSIP Grant (\$249,076 + \$24,024 match)
Sidewalks	C1400	\$1,000	\$1,000					
Street, Park and Parking Lot Lighting	C1600	\$300	\$300					
Conduit Replacement	C1600 (sub)	\$1,000	\$					
Urban Forest - Trees & Landscape Maintenance	C1700	\$2,414	\$2,414	\$32	\$32			Alameda Landing
Urban Forest Master Plan Update	C1700 (sub)	\$175	\$175					
Subtotal		\$11,063	\$8,705	\$32	\$32	\$1,076	\$	
Sanitary Sewer								
Sewer Rehabilitation	C2100	\$7,400	\$7,650					
Subtotal		\$7,400	\$7,650	\$	\$	\$	\$	
Storm Water, Lagoons and Shoreline								
Storm Water Management	C3100	\$350	\$960					
Storm Water Pump Stations	C3200	\$450	\$					
Green Infrastructure and Trash Capture	C3300	\$50	\$140					
Lagoon Maintenance	C3400	\$250	\$250	\$50	\$50			ALWHOA reimbursements
Shoreline Maintenance	C3500	\$51	\$51	\$51	\$51			Tidelands 216
Subtotal		\$1,151	\$1,401	\$101	\$101	\$	\$	
Buildings and Facilities								
City Buildings	C4100	\$1,717	\$1,817					
ADA Transition Plan	C4100 (sub)	\$100	\$					
Littlejohn Park Rec Center Rebuild	C5550	\$250	\$	\$250				General Liability Fund (611)
Doolittle Landfill - Flare & Piping Replacement	C7600	\$500	\$	\$500				Solid Waste Surcharge Fund 260
Alameda Point Big Whites Painting	C7520	\$1,400	\$1,400	\$1,400	\$1,400			Alameda Point Fund 290
Subtotal		\$3,967	\$3,217	\$2,150	\$1,400	\$	\$	
Parks								
Park Maintenance Improvements	C5100	\$556	\$383	\$106	\$108			cell towers & memorial benches
Playground Replacements	C5200	\$	\$475				\$225	Parks grant
Park Pathway Repair & Replacement	C1500	\$50	\$50					
East End/Harbor Bay Dog Park	C5530	\$75	\$					
Subtotal		\$681	\$908	\$106	\$108	\$	\$225	
Transportation System Enhancements								
Street Safety	C6100	\$250	\$250					
Safe Routes to School Infrastructure	C6200	\$268	\$100			\$84		Bike ped grant
Active Transportation Plan Implementation Project	C6300	\$100	\$500					
Traffic Signal Modernization and Smart Cities	C6400	\$	\$100					
Central Ave Safety Improvements	C6560	\$	\$12,200				\$10,800	ATP (\$7.3M), ACTC (\$3.5M)
Clement Ave CAT - Grand to Broadway	C6520	\$5,172	\$			\$4,500		ACTC grant
Lincoln / Marshall Safety Improvements	C6570	\$200	\$					
West End Bicycle/Pedestrian Crossing	C6590	\$1,355	\$200			\$1,355	\$200	ACTC grant
Subtotal		\$7,345	\$13,350	\$	\$	\$5,939	\$11,000	
Sea Level Rise Adaptation and Other Projects								
Veterans Court & BFI Seawall	C7110	\$100	\$					
Northern Shoreline - Posey/Webster Tubes	C7130	\$200	\$					
Subtotal		\$300	\$	\$	\$	\$	\$	
TOTAL CAPITAL EXPENDITURES		\$31,907	\$35,231	\$2,389	\$1,641	\$7,015	\$11,225	
Remaining Fund Balance		\$37,101	\$36,946	\$	\$	\$	\$	

Project Description

PAVEMENT MANAGEMENT

Lead Department: Public Works **Project Type:** Pavement, Lighting and Urban Forest
Project Summary: Pavement Management for the City's 125 miles of roadways
CIP No.: C11000

Project Description:

The City's pavement management program consists of slurry, and cape seal projects, overlays, and major roadway reconstruction. With 125 centerline miles of streets and a replacement value in excess of \$185 million, pavement treatments and candidate streets are carefully selected to maximum the return on our investment.

As part of Public Works three year paving plan, the City has been divided into three zones and projects will rotate throughout the City. Locations and treatments are typically finalized early in the year, designed and bid on in the spring, and constructed during the summer. The City sometimes receives grants through Caltrans or other sources for specific streets, which will be constructed as smaller, separate projects.

This major construction program will treat approximately 4 or more miles of street per year. Work will include repair of underlying material, adjustments to concrete as needed to restore drainage (curbs, gutters, driveways, culverts, curb ramps), and reinstallation of pavement striping. This project helps protect and maintain the City's street surfaces, improve stormwater surface drainage, and improve mobility for all users.

In addition to the once per year major construction project, City personnel perform other work year-round, including minor pothole patching and ponding repair; master planning; coordination with utility companies; coordination with major subdividers; biennial field inspection of pavement condition; updating the GIS database; yearly reporting to funding sources; and grant acquisition. Repairs and upgrades will be made in accordance with the City's Complete Streets Policy, Mobility Element of the General Plan, ADA Transition Plan, and Active Transportation Plan.



Project Funding

Fund	FY 21-22	FY 22-23
Road Maint.	\$1,850,000	\$1,850,000
Measure B LSR	\$250,000	\$900,000
Measure BB LSR	\$1,200,000	\$600,000
Waste Fund	\$318,000	\$318,000
Vehicle Reg.	\$320,000	
Sewer Services	\$336,000	\$348,000
OBAG2 Grant	\$827,000	
Total 2021-23	\$9,117,000	

Notes: The Road Maintenance Rehabilitation Account funding comes from the 2017 Gas Tax also known as SB-1

Results from 2019-2021:

The City treated 13 miles of roadways. As a result, the City's overall Pavement Condition Index is 69, which falls in the upper range the "fair" category.

Future Years

This is an ongoing project. Continued investment is needed to maintain and improve the City's vital roadway network asset.

Responsible Staff Member:



Trung Nguyen
Project Manager 1
510-747-7943

email: tnguyen@alamedaca.gov

Project Description

SIGNS, PAVEMENT MARKINGS, AND CURB PAINTING

Lead Department: Public Works
Project Type: Pavement, Lighting and Urban Forest
Project Summary: This project provides proactive maintenance of the City's inventory of street signs, painted curbs, and pavement markings
CIP No.: C12000

Project Description:

This project continues the City's replacement of sign, pavement marking and curb painting assets. Current funding levels support a program that addressed regulatory and safety related signs and markings at City intersections. Each fiscal year, funds are focused in a zone representing one-fourth of the City. FY 21-22 will focus on the area east of High Street and on Bay Farm Island. FY 22-23 will focus on the lane markings and signage on the main island between intersections.

A fully funded project would improve safety for all street users and improve neighborhood aesthetics by replacing regulatory signs every seven years, non-regulatory signs every 10 years, pavement markings every five years, and curb painting every 10 years. Previously, Public Works' maintenance of signs, curb painting, and pavement markings was largely reactive, as staff typically respond to the public's requests for repair or maintenance of an individual sign or curb painting location.



Project Funding

Fund	FY 21-22	FY 22-23
Measure B LSR	\$200,000	\$200,000

Total 2021-23 \$400,000

Results from 2019-2021:

Staff identified locations that needed maintenance and work was performed at 302 intersections. In 2020, staff developed typical crosswalk marking improvement standards based on street classifications and intersection controls. This allowed staff to upgrade 21 intersections with high visibility crosswalks in the FY20-21 project.

Notes: This is an ongoing project.

Future Years

Future revenue increases in transportation funds would improve Alameda's level of servicing these assets. This will help preserve the existing infrastructure as well as recent traffic safety investments, such as the Otis Drive Traffic Calming Project or bike lane striping improvements to Santa Clara Avenue and Fernside Boulevard.

Responsible Staff Member:



Alan Ta
Assistant Engineer

510-747-7946

email: ATa@alamedaca.gov

Project Description

TRAFFIC SIGNALS AND SYSTEMS

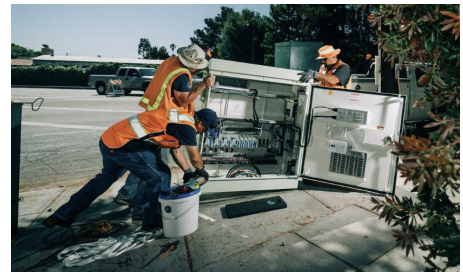
Lead Department: Public Works
Project Type: Pavement, Lighting and Urban Forest
Project Summary: This project supports the City's transportation infrastructure through capital replacement and upgrades to traffic signals and associated systems
CIP No.: C13000

Project Description:

The City of Alameda has 89 signalized intersections, which have varying levels of capabilities to support traffic operations. This project will fund the systematic upgrade of up to 20 signal cabinets and controllers which have reached the end of their useful life or are at high-priority intersections. It will also replace in-pavement detection loops with video detection, when needed, at up to 20 intersections. This work will increase system reliability and improve performance and functionality for vehicles, transit, bicycles, and pedestrians at these intersections.

In addition, the City has received grant funding to upgrade signals and crosswalks for pedestrian safety at four intersections: Fernside/San Jose, Park St/Otis Drive, Willow/Otis Dr, Santa Clara/Grand.

This project also supports the ongoing data collection (radar, trend analysis, TCMP, etc.), liaising with the Alameda County Transportation Commission, Metropolitan Transportation Commission, Caltrans, AC Transit, City of Oakland and furthering the transit priority/smart corridor systems.



Project Funding

Fund	FY 19-20	FY 20-21
Measure B - LSR	\$350,000	\$350,000
Measure BB - LSR	\$24,000	
TIFF	\$250,000	\$250,000
Grant	\$249,000	

Total 2021-23 \$1,473,000

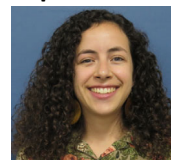
Results from 2019-2021:

The City installed upgrades to the traffic signal system along Park Street and implemented communications and coordinated signal timings. Two new traffic signals were installed on Harbor Bay Parkway.

Future Years

Continued investment will be necessary to maintain reliability and improve performance. The traffic signal communications will be improved to provide enhanced capabilities for operations and maintenance.

Responsible Staff Member:



Areli Vazquez-Muñoz
Assistant Engineer

Phone: 510-747-7939

email: AVazquez@alamedaca.gov

Project Description

SIDEWALKS

Lead Department: Public Works **Project Type:** Pavement, Lighting and Urban Forest
Project Summary: Maintain sidewalks for pedestrian circulation, increased accessibility and reduced
CIP No.: C14000 liability claims

Project Description:

The City of Alameda has over 260 miles of sidewalk. Sidewalk damage and displacement often occurs due to street trees planted between the curb and gutter and the sidewalk where tree roots lift the sidewalk and can create a vertical displacement or trip hazard. Unfortunately, many tree species planted years ago have since been found to lift and damage the sidewalk.

Each year approximately 500 new sidewalk locations are identified for repair through a) inspection of one of the cities' five zones, b) an inspection of the City's high-traffic pedestrian areas, or c) public referrals. In these locations, City inspectors have confirmed the lift in a sidewalk is attributable to a City-maintained street tree.

During the past budget cycle, the City utilized a new technology where vertically offset sidewalks were cut instead of removed and replaced. This significantly less expensive method creates a smooth transition and complies with all accessibility requirements. Larger vertical offsets exceeding 1¼ inches will still need to be removed and replaced. These locations will be put on the sidewalk repair list and repairs are handled in chronological order.

Where the damage to the sidewalk is not caused by a City-maintained street tree, the responsibility for repair falls to the adjacent property owner. In these instances, the City sends a letter to the property owner identifying the condition, requiring its repair, and asking to be informed when repairs are complete.



Project Funding

Fund	FY 21-22	FY 22-23
Measure B LSR	\$400,000	\$400,000
Measure BB LSR	\$600,000	\$600,000
Total 2021-23	\$2,000,000	

Notes: This is an ongoing project.

Results from 2019-2021:

The program removed more than 7,000 potential hazards during the past two year budget cycle, including cutting and sidewalk replacement locations.

Future Years

Implementation of concrete cutting will significantly reduce the amount of sidewalk needing replacement. However, ongoing efforts will be needed to replace portions of sidewalks due to the number of street tree species within Alameda that are known to lift and damage sidewalks.

Responsible Staff Member:



John Tallitsch
Construction Inspection
Supervisor
510-747-7956
email: jtallitsch@alamedaca.gov

Project Description

STREET, PARK, AND PARKING LOT LIGHTING

Lead Department: Public Works **Project Type:** Pavement, Lighting and Urban Forest
Project Summary: Maintain the City's street, park pathway, and parking lot lighting
CIP No.: C16000

Project Description:

Public Works is responsible for the City's approximately 6,800 street, park pathway and public parking lot lights. Alameda has a diverse mix of light fixtures and poles, some of which date back to the 1800's and are designated historic. Others are decorative while some are traditional "cobra head" style lights. Years of underinvestment in this asset has resulted in deteriorated infrastructure and significant deferred maintenance and replacement costs.

A focus for the 2021-23 budget cycle will be replacement of poor and fair conditioned poles, including new foundations. The recent LED project replaced the lamps interior to the historic fixtures. We will continue to replace the historic tear drop fixtures, approved by the Historic Advisory Board and work with the Board to identify replacement pole and fixtures for other historic light types.



Project Funding

Fund	FY 21-22	FY 22-23
General Fund	\$300,000	\$300,000
Total 2021-23	\$600,000	

Results from 2019-2021:

Completed conversion of all street, parking lot and park pathway lighting to LED. LED uses significantly less energy than the previous high-pressure sodium lamps, resulting in reduced energy use and expenses for the City.

Notes: This is an ongoing project.

Future Years

Future work and lighting replacements will be consistent with the master plan. It is anticipated that additional funding may be necessary in future budget cycles to adequately maintain and repair the City's streetlights.

Responsible Staff Member:



Erin Smith
Public Works
Director
510-747-7938

email: esmith@alamedaca.gov

Project Description

STREET LIGHTING CONDUIT REPLACEMENT

Lead Department: Public Works **Project Type:** Pavement, Lighting and Urban Forest
Project Summary: Maintain the City's street, park pathway, and parking lot lighting
CIP No.: C16000

Project Description:

Public Works is responsible for the City's approximately 6,800 street, park pathway and public parking lot lights. This includes the light fixtures, poles and electrical infrastructure to power the lights. About one-third of the lights are fed by overhead power with the remaining two-thirds fed by an underground electrical service. Much of the City's underground streetlight infrastructure was installed with the original development and is well past its useful life. This results in unreliable service delivery and costly spot repairs to keep the lights functioning.

Years of underinvestment in this asset has resulted in deteriorated infrastructure and significant deferred maintenance and replacement costs. A focus for the 2021-23 budget cycle will be to continue replacement of underground service conduit to ensure continuity of service.



Project Funding

Fund	FY 21-22	FY 22-23
Const. Imp. Tax	\$1,000,000	
Total 2021-23	\$1,000,000	

Notes: This is an ongoing project.

Results from 2019-2021:

Completed conduit replacement on the 2900 and 3000 block of Gibbons; 1800 block of Cornell; 2900 blocks of Northwood and Southwood Drive.

Future Years

Future work and lighting replacements will be consist with the master plan. Additional funding in future budgets will be needed for subsequent phases of underground streetlight electric service replacement.

Responsible Staff Member:



Erin Smith
 Public Works
 Director
 510-747-7938

email: esmith@alamedaca.gov

Project Description

URBAN FOREST - TREES AND LANDSCAPE MAINTENANCE

Lead Department: Public Works

Project Type: Pavement, Lighting and Urban Forest

Project Summary: Maintain Alameda's urban forest consisting of over 21,000 trees

CIP No.: C17000

Project Description:

Alameda is fortunate to have a mature, healthy urban forest of 21,527 trees with an appraised value of over \$63 million along with 60 acres of median and special landscape sites that currently consists of 111 general landscape maintenance sites, irrigation management and repairs of over 300 automated valves, and weed abatement and mulching various locations throughout the city. Additional sites include Site A Phase 1 Backbone Infrastructure, Seaplane Lagoon, Del Monte- Clement Avenue Extension and Ralph Appezatto Memorial Parkway.

The City's urban forest removes 9,121 tons of pollutions and carbon dioxide from our air, helps cool our island during the summer, and decreases our storm-water run-off by 220 million gallons per year. Alameda's tree canopy ratio (21.1%) a measure of how vibrant our urban forest is stacks up well against nearby cities such as Oakland (24.8%), San Francisco (14%) and San Jose (15%).

This project will continue to maintain and enhance the City's urban forest and landscaped areas. This budget cycle will include species-specific trimming for tree species that need more frequent trimming.



Project Funding

Fund	FY 21-22	FY 22-23
General Fund	\$ 150,000	\$ 150,000
Const. Imp. Tax	\$ 1,317,000	\$ 1,317,000
Gas Tax (HUTA)	\$ 900,000	\$ 900,000
Ala. Landing MSD	\$ 32,000	\$ 32,000
Open Space	\$ 15,000	\$ 15,000

Total 2021-23 \$4,828,000

Notes: This is an ongoing project.

Results from 2019-2021:

Fiscal year 19-21 accomplishments include the following: 7,550 Tree Trimmed, 512 Trees Planted, 1,027 Treated for Pest and 449 Dead/Hazard Tree Removals.

Future Years

Funding a five trim cycle has enabled public works the ability to improve the urban forest's resilience through the recent periods of drought, which increase pest attacks, plant disease and over-all tree stress. Additional funding will be needed to increase tree plantings to support the Climate Action and Resiliency Plan.

Responsible Staff Member:



Jesse Barajas
Project Manager
510-747-7966

email: jbarajas@alamedaca.gov

Project Description

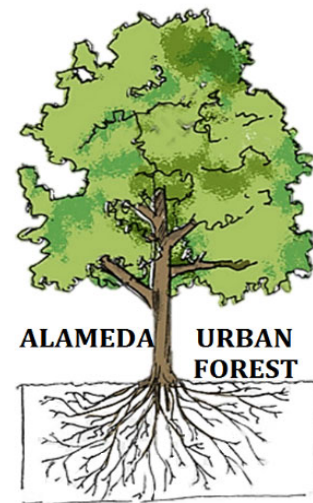
URBAN FOREST MASTER PLAN

Lead Department: Public Works **Project Type:** Pavement, Lighting and Urban Forest
Project Summary: Update of the 2010 Master Street Tree Plan
CIP No.: C17000

Project Description:

Alameda is fortunate to have a mature, healthy urban forest of 21,527 trees with an appraised value of over \$63 million. The City's urban forest removes over 11,000 tons of pollutants and carbon dioxide from our air annually, helps cool our island during the summer, helps settle particles in the air, provides bird habitat, decreases our storm-water run-off by 220 million gallons per year, and enhances the beauty of the city. Alameda's tree canopy ratio (21.1%) a measure of how vibrant our urban forest is stacks up well against nearby cities such as Oakland (24.8%), San Francisco (14%) and San Jose (15%).

This project will update the 2010 Master Street Tree Plan and expand the scope to include park trees and promote tree planting and proper maintenance of trees on private property. The updated plan will consider social equity throughout and reflect current standards of practice, including appropriate and resilient species selection for Alameda's climate.



Project Funding

Fund	FY 19-20	FY 20-21
General Fund	\$ 175,000	\$ 175,000
Total 2021-23 \$		350,000

Results from 2019-2021:

This is a new project.

Future Years

An updated Master Street Tree Plan will help the City better manage its urban forest. A secondary goal will be to help normalize the planned expenditures from year to year to facilitate budget development.

Responsible Staff Member:



Jesse Barajas
Project Manager
510-747-7966

email: jbarajas@alamedaca.gov

Project Description

SEWER REHABILITATION

Lead Department: Public Works **Project Type:** Sanitary Sewer
Project Summary: Replace approximately 6 miles of deteriorated sewer pipeline and make emergency repairs, as needed.
CIP No.: C21000

Project Description:

The City's sewer system is intended to protect public health and the environment, maintain customer satisfaction, and be cost-effective.

Consistent with the City's requirements under Final Consent Decree for Case Nos. C09-00186 and 09-05684, and the City's Sewer Master Plan, the City rehabilitates approximately 3 miles of sewer main per year for years to come. The City's Sewer Master Plan contains a 20 year Sewer Rehabilitation Capital Improvement Program with prioritization based on pipe condition and age, areas of known problems, consequence of failure and coordination with other utility projects among other factors. The City's ongoing work to clean and video sewer mains also helps to refine, if needed, the prioritization of sewer rehabilitation work.

The City will construct Years 7 and 8, as identified in the Master Plan's Sewer Rehabilitation Capital Improvement Program. Year 7's construction contract will be awarded in September 2021 with construction lasting through July 2022. Year 8 will be designed FY2021/2022 with the construction contract awarded in September 2022 and construction lasting through July 2023.



Project Funding

Fund	FY 21-22	FY 22-23
Sewer Services	\$7,400,000	\$7,650,000
Total 2021-23	\$15,050,000	

Notes:

FY 21-22, \$7,400,000:

\$6,960,000 for main replacement,
\$440,000 for emergency repairs

FY 22-23, \$7,650,000:

\$7,200,000 for main replacement,
\$450,000 for emergency repairs

Results from 2017-2019:

Alameda rehabilitated approximately 6 miles of sewer pipe per plan and in compliance with the Final Consent Decree.

Fiscal Years 2021-2024:

This is an ongoing project. Alameda has a comprehensive sewer rehabilitation plan through 2035.

Responsible Staff Member:



Shilpa Patel
Assistant Engineer
510-747-7945

email: spatel@alamedaca.gov

Project Description

STORMWATER MANAGEMENT

Lead Department: Public Works **Project Type:** Storm, Lagoons and Shoreline
Project Summary: This project focuses on rehabilitation and maintenance of Alameda's stormwater assets
CIP No.: C31000 to maintain efficient flow and prevent flooding.

Project Description:

Alameda voters passed a fee in 2019 that will fund capital improvements and operational enhancements to the city's stormwater management system over the next 15 years. This project focuses on rehabilitation and maintenance of Alameda's stormwater assets to maintain efficient flow and prevent flooding.

Projects include outfall protection, operational enhancements to address ponding and poor surface drainage. Work to support the yearly construction program will include cleaning and inspection of pipes; updates to the asset management systems; coordination with land developers; investigation of ponding and trash complaints; coordination with the Federal Emergency Management Agency, San Francisco Bay Conservation and Development Commission, the Army Corps of Engineers, the San Francisco Water Quality Control Board, and others to assess and prepare for sea level rise, tsunamis, and flood hazards; and public outreach.



Project Funding

Fund	FY 21-22	FY 22-23
Stormwater	\$350,000	\$960,000

Total 2021-23 \$1,310,000

Results from 2019-2021:

The City joined the Community Rating System, entitling residents to an automatic flood insurance discount. The City began its update to the Local Hazard Mitigation Plan. Key culverts were replaced at Shore Line Drive to prevent recurring street flooding.

Future Years

The City will implement priority projects in Stormwater Fee report, including tidal protection for City's shoreline outfalls, addressing deteriorating lagoon walls within City rights-of-way, dredging Bay Farm Island lagoons, culvert replacements and drainage improvements to reduce surface ponding.

Responsible Staff Member:



Andrew Nowacki
Associate Civil
Engineer
510-747-7941

email: anowacki@alamedaca.gov

Project Description

STORM WATER PUMP STATIONS

Lead Department: Public Works **Project Type:** Storm, Lagoons and Shoreline
Project Summary: Construct improvements at four pump stations
CIP No.: C32000

Project Description:

To protect the City's streets and adjacent land uses from flooding, this major construction program will upgrade existing storm drain pump stations in accordance with the Storm Drain Master Plan and Storm Drain Pump Station Assessment of 2011. This project will upgrade storm drain pump station control systems at the Main Street, Webster Street, Third Street and Golf Course pump stations.



Project Funding

Fund	FY 21-22	FY 22-23
Stormwater	\$450,000	\$0
Total 2021-23		\$450,000

Note: This is an ongoing project. Funds for this project were included in the 2015-17 Capital Budget

Results from 2019-2021:

The City completed the design for improvements at the Main Street, Webster Street, Third Street and Golf Course pump stations.

Future Years

The City will design improvements for the Arbor, Webster and Eastshore/Central pump stations.

Responsible Staff Member:



Flavio Barrantes
Project Manager III
510-747-7952

email: fbarrant@alamedaca.gov

Project Description

GREEN INFRASTRUCTURE AND TRASH CAPTURE

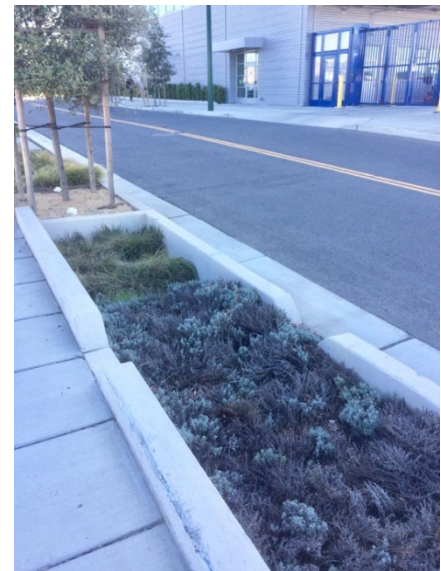
Lead Department: Public Works **Project Type:** Storm, Lagoons and Shoreline
Project Summary: This project focuses on installation of trash capture devices implementation of green
CIP No.: C33000 stormwater infrastructure

Project Description:

Green stormwater infrastructure refers to a sustainable system that slows runoff by dispersing it to vegetated areas, harvests and uses runoff, promotes infiltration and evapotranspiration, and uses bioretention and other low impact development practices to clean stormwater runoff.

The City developed a Green Infrastructure Plan in 2019 to guide the identification, implementation, tracking, and reporting of green infrastructure projects within the City of Alameda (City), in accordance with the Municipal Regional Stormwater Permit (MRP), Order No. R2-2015- 0049, adopted by the San Francisco Bay Regional Water Quality Control Board (RWQCB) on November 15, 2015.

The project installs full trash capture devices and storm drain markers at the City's stormwater drainage inlets. In addition, it provides funding to integrate green infrastructure into capital projects, such as streetscapes, sea level rise adaptation projects, and stormwater pump station improvements.



Project Funding

Fund	FY 20-21	FY 22-23
Tidelands	\$50,000	\$140,000
Total 2021-23		\$190,000

Results from 2019-2021:

The city continued to install and maintain full trash capture devices that prevent trash from entering the Bay from the City's stormwater system.

Future Years

Green infrastructure is expected to become integrated with capital improvement projects, such as streetscape improvements and rehabilitation of the City's stormwater infrastructure.

Responsible Staff Member:



Jim Barse
Clean Water Program
Specialist
510-747-7950
email: jbarse@alamedaca.gov

Project Description

LAGOON MAINTENANCE

Lead Department: Public Works **Project Type:** Storm, Lagoons and Shoreline
Project Summary: This project funds maintenance of the Alameda West Lagoons as a functional storm drainage detention basin while maintaining suitability for recreational use.
CIP No.: C34000

Project Description:

The Alameda West Lagoon system is composed of five lagoons that receive stormwater from a watershed approximately two square miles in size. The lagoons stretch west to east from Westline Drive to Court Street, between the Gold Coast and South Shore. Lagoon maintenance is continually required due to the aging weirs, lagoon walls, and drainage infrastructure, as well as accumulation of sediment, litter, and leaves within. Bay Farm Island also has a lagoon system running north to south which requires similar maintenance and repairs.

Planned capital projects include performing structural repairs of the Bayview weir and cleaning the weir outfall culvert.

This project will also continue to fund dredging, water quality monitoring, water quality adjustments, pump maintenance and operation, weir and outfall maintenance and operations, interior lagoon wall repair, and trash/vegetation cleanup as the needs arise. Capital improvements and ongoing maintenance are paid for partly by AWLHOA and partly by the City.



Project Funding

Fund	FY 21-22	FY 22-23
Const. Improv. Tax	\$200,000	\$200,000
ALWHOA	\$50,000	\$50,000
Total 2021-23	\$500,000	

Notes: (AWLHOA) Alameda West Lagoon Home Owners Association

Results from 2019-2021:

Dredging for Lagoons 3 and 5 was completed. Design for structural repairs of the Bayview Weir was completed, with construction scheduled for 2022. Weekly lagoon maintenance was ongoing.

Future Years

Weekly maintenance and minor facility repairs will continue. Begin permitting/design for Bayview weir replacement to ensure lagoon water levels can be maintained during storm events, as described in the Climate Action and Resiliency Plan.

Responsible Staff Member:



Andrew Nowacki
Associate Civil
Engineer
510-747-7941

email: anowacki@alamedaca.gov

Project Description

SHORELINE MAINTENANCE

Lead Department: Public Works **Project Type:** Storm, Lagoons and Shoreline
Project Summary: This project focuses on rehabilitation and maintenance of the Alameda shoreline to
CIP No.: C35000 prevent coastal flooding and erosion.

Project Description:

Alameda has approximately 25 miles of coastline, of which 9 miles are the responsibility of the City to maintain. The remainder are maintained by the Navy, Coast Guard, East Bay Regional Park District, and private individual landholders. Materials used to stabilize shoreline include materials such as biodegradable organics, riprap, and vegetation. All of these are in need of periodic replacements and upgrades, especially after winter storms and king tides.

Work planned on Bay Farm Island includes replacement of stabilization measures (such as hay bales and straw wattles) at several shoreline locations on an as-needed basis; upsizing and restoration of rip rap washed away by storm action along the shoreline; and outfall maintenance (such as the rip rap apron of the Bay Bayview Weir outfall).



Project Funding

Fund	FY 20-21	FY 22-23
Tidelands	\$51,000	\$51,000
Total 2021-23	\$102,000	

Results from 2019-2021:

Shoreline repairs were completed on the northern shoreline of Bay Farm Island.

Future Years

Design of restoration measures for the northern shoreline of Bay Farm Island in areas it has receded. The coming years will most likely present an increasing challenge: keeping pace with rising sea levels and their effects on shoreline maintenance/repair.

Responsible Staff Member:



Andrew Nowacki
 Associate Civil
 Engineer
 510-747-7941

email: anowacki@alamedaca.gov

Project Description

CITY BUILDINGS - PUBLIC WORKS

Lead Department: Public Works **Project Type:** Buildings and Facilities
Project Summary: Capital Replacement Projects for the City's buildings.
CIP No.: C41000

Project Descriptions:

The following projects are scheduled for Fiscal Year 2021-2023 for City Buildings:

- 1. Police Department:** Fuel Tank Excavation & Replacement, Roof Replacement, HVAC System Upgrade
- 2. Fire Station 4:** Dorm Unit Installations, Roof Replacement, Generator Replacement, Electrical & Kitchen Upgrade
- 3. Alameda Point Gym:** Structural Assessment, Gymnasium Repairs
- 4. Maintenance Service Center:** Fuel Tanks Excavation & Replacement
- 5. City Hall Complex Garage:** Regrade Building Perimeter
- 6. City Hall:** Elevator Repairs, Boiler Replacement, HVAC Upgrade, Generator Replacement
- 7. Mastick Senior Center:** Roof Replacement, Hot Water Fixture Replacement, HVAC Upgrade
- 8. ADA Self Evaluation & Transition Plan:** ADA focused assessment of all City facility, programs, services and activities



Results from 2019-2021:

Completed projects include renovations at: The Veterans Building, O'Club, Fire Station 1, Fire Station 2, City Hall and Krusi Park. Renovations near completion are ongoing at Godfrey, Shoreline and Leydecker Parks, as well as the Maintenance Service Center. Additionally, both the Mastick Fresh Air and Cooling Station Installation and Alameda Point Gym Restroom projects are projected to be complete summer 2021.

Future Years

The City's 41 buildings have years of deferred maintenance. These facility investments start to cut into that deferred maintenance, but not by much. With a more significant investment, building conditions could improve and the City would save money on having to make fewer repairs.

Project Funding

Fund	FY 21-22	FY 22-23
Facilities Maint.	\$1,817,000	\$1,817,000

Total 2021-23 \$3,634,000

This is a recurring project

Responsible Staff Member:



Mike Billington
 Facilities Manager
 510-747-7947

email: mbillington@alamedaca.gov

Project Description

LITTLEJOHN PARK REC CENTER REBUILD

Lead Department: Public Works **Project Type:** Buildings and Facilities
Project Summary: Littlejohn Recreation Center Fire Restoration Project
CIP No.: C55500

Project Descriptions:

Located in central Alameda and approximately 3.5 acres in size, Littlejohn Park is a public green space that provides picnic tables, benches, pathways, a recreation center, a little league field, basketball courts and a children's playground.

In April 2021 the recreation center was impacted by a fire rendering the facility uninhabitable. Since that time Public Works has abated the damages and begun restoration efforts.

Construction costs for the project will be funded primarily by the City's insurance carrier, however the City is responsible for the \$250,000 deductible.



Project Funding

Fund	FY 21-22	FY 22-23
Liability Fund	\$250,000	\$0
Total 2021-23	\$250,000	

Results from 2019-2021:

This is a new project.

Future Years

The design process has begun, construction is projected to begin late summer 2021.

Responsible Staff Member:



Mike Billington
Facilities Manager
510-747-7947

email: mbillington@alamedaca.gov

Project Description

DOOLITTLE LANDFILL FLARE AND PIPING REPLACEMENT

Lead Department: Public Works **Project Type:** Buildings and Facilities
Project Summary: This project replaces infrastructure for the collection and destruction of methane gas
CIP No.: C76000 from the Doolittle Landfill site

Project Description:

As part of the ongoing operation and maintenance of the Alameda Doolittle Landfill, the City is required to maintain a methane burner (flare), gas extraction wells and general site conditions including landscaping and safety fencing.

This project will replace components of the existing system for collecting and destroying methane from the landfill, including the flare and piping. This will create operating efficiencies and reduce the repairs needed to prevent the release of methane.



Project Funding

Fund	FY 20-21	FY 22-23
Solid Waste	\$500,000	\$0
Total 2021-23		\$500,000

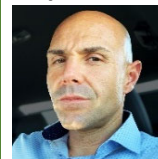
Results from 2019-2021:

The City continued to maintain the existing methane flare, gas extraction wells and general site conditions including landscaping and safety fencing.

Future Years

The amount of methane gas collected is expected to decrease over time. This will create opportunities for other uses of the landfill site.

Responsible Staff Member:



Ricardo Delatorre
Public Works Maintenance
Supervisor
510-747-7923
email: rdeletorre@alamedaca.gov

Project Description

ALAMEDA POINT BIG WHITES PAINTING

Lead Department: Community Development **Project Type:** Buildings and Facilities
Project Summary: This project repaints the "Big Whites" housing at Alameda Point and performs other
CIP No.: C75200 exterior repairs

Project Description:

The Big Whites are formerly Navy senior officer housing at Alameda Point that are owned by the City and currently leased at market rate.

The Big Whites painting project will repair cracks in exterior stucco surfaces, prepare all painted exterior surfaces for repainting, and repaint the exterior of the buildings. The project includes provisions to stabilize existing painted surfaces containing lead-based paint.

In addition, the project will:

- Repair or replace decayed wood trim, garage door components and window components
- Replace severely deteriorated and missing sections of gutters and downspouts
- Install new downspout extensions and splash blocks at all downspouts



Project Funding

Fund	FY 20-21	FY 22-23
Alameda Point	\$1,400,000	\$1,400,000

Total 2021-23 \$2,800,000

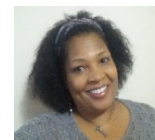
Results from 2019-2021:

This is a new project.

Future Years

The City will continue to invest in city-owned buildings and infrastructure at Alameda Point.

Responsible Staff Member:



Nanette Mocanu
Assistant Community
Development Director
510-747-6886

email: NMocanu@alamedaca.gov

Project Description

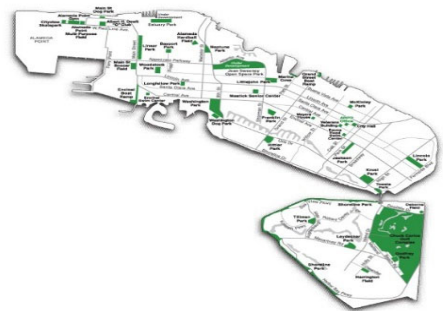
PARK MAINTENANCE IMPROVEMENTS

Lead Department: Recreation and Parks **Project Type:** Parks
Project Summary: Capital maintenance and improvement projects to ensure safe play areas, athletic facilities, and amenities for all parks
CIP No.: C51000

Project Description:

The City of Alameda has 24 parks serving City residents and visitors with millions of visits each year. This project provides much needed capital investment to address significant deferred maintenance and provide safe, accessible and high quality Alameda parks. Types of projects include:

- 1) Addressing long neglected deferred maintenance issues in parks such as fencing, tables, and concrete repair work.
- 2) Adding amenities as usage increases such as bicycle racks, shade structures, tree planting
- 3) Implementing long-term operational cost efficiencies such as modernized irrigation clocks for water savings and automated, timed restroom locks so they don't need to be manually opened/closed by staff every day of the year.
- 4) Other projects such as resurfacing tennis courts, adding pickleball courts, renovating bocce ball courts, and expanding the skate park.



Project Funding

Fund	FY 21-22	FY 22-23
General Fund	\$450,000	\$275,000
Cell tower & other	\$106,000	\$108,000
Total FY19-21	\$939,000	

Results from 2019-2021:

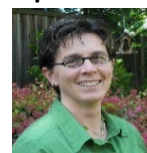
Replaced a 40-foot fence along the Lincoln Park baseball field to protect houses, an aging dock at Grand Street Boat Ramp, concrete areas at Godfrey Park and asphalt pathways at Washington and Chochenyo Parks. Also planted 175 trees with the majority located on the West End.

Note: This is an ongoing project.

Future Years

Future park maintenance improvement projects may include adding and replacing athletic field and tennis court lighting.

Responsible Staff Member:



Amy Wooldridge
 Recreation and
 Parks Director
 510-747-7529

email: awooldridge@alamedaca.gov

Project Description

PLAYGROUND REPLACEMENT

Lead Department: Recreation and Parks **Project Type:** Parks
Project Summary: Annual playground replacement for all parks
CIP No.: C52000

Project Description:

The City of Alameda has 24 parks serving residents and visitors. This project replaces one park playground each year based on facility age and location equity. The design for each playground is unique and the local neighborhood community is involved with the design and layout. The playground safety surfaces are changed from existing wood fiber to poured-in-place rubber surfacing whenever financially feasible which improves playground safety and accessibility.

The project in FY 22-23 is to replace the Lincoln Park playground. Lincoln Park is the oldest remaining playground. Additional funding sources include \$225,000 from the State of CA Park and Water Bond Per Capita grant allocation.



Project Funding

Fund	FY 21-22	FY 22-23
General Fund	\$0	\$250,000
Grants	\$0	\$225,000

Total 2021-23 \$475,000

Note: This is an ongoing project.

Results from 2019-2021:

The playground at Bayport Park was replaced with a new structure featuring an outer space theme to celebrate the adjacent elementary school mascot, the Stars, and includes rubberized safety surfacing.

Future Years

This is an ongoing project. Future replacements are planned to include playgrounds at Tillman Park.

Responsible Staff Member:



Amy Wooldridge
Recreation and
Parks Director
510-747-7529

email: awooldridge@alamedaca.gov

Project Description

PARK PATHWAY REPAIR AND REPLACEMENT

Lead Department: Recreation and Parks **Project Type:** Parks
Project Summary: Construction of a new dog park on the east end of Alameda
CIP No.: C15000

Project Description:

ARPD has many miles of asphalt pathways throughout its 24 parks and this will implement a regular program to repair and replace deteriorated pathways for improved safety and accessibility. An annual pathway replacement program for regular repair reduces long-term costs involved with deferred maintenance.



Project Funding

Fund	FY 21-22	FY 22-23
General Fund	\$50,000	\$50,000

Total 2021-23 \$100,000

Results from 2019-2021:

This is a new project.

Future Years

This project is expected to continue in future years to improve all park pathways. The long-term solution is to do an inventory of pathways, identify the status of all pathways and implement a 10-year replacement master plan to keep park pathways in a state of good repair.

Responsible Staff Member:



Amy Wooldridge
Recreation and
Parks Director
510-747-7529

email: awooldridge@alamedaca.gov

Project Description

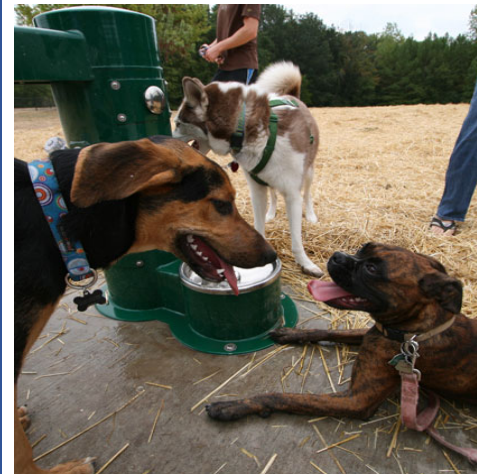
EAST END/HARBOR BAY DOG PARK

Lead Department: Recreation and Parks **Project Type:** Parks
Project Summary: Construction of a new dog park on the east end of Alameda
CIP No.: C53300

Project Description:

The public demand has been growing for a dog park on the East End of Alameda. ARPD currently operates two dog parks on the West End. This project will fund construction of one dog park that would include both a small and large dog area.

Several potential locations have been identified in collaboration with a community advocacy group with the final location to be confirmed through a public input process.



Project Funding

Fund	FY 21-22	FY 22-23
General Fund	\$75,000	\$0

Total 2021-23 \$75,000

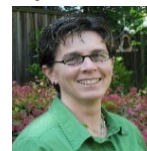
Results from 2019-2021:

This is a new project.

Future Years

Ongoing maintenance of the dog parks is included in the Park Maintenance operating budget.

Responsible Staff Member:



Amy Wooldridge
Recreation and
Parks Director
510-747-7529

email: awooldridge@alamedaca.gov

Project Description

STREET SAFETY

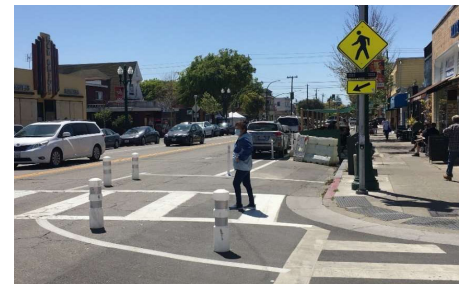
Lead Department: Public Works **Project Type:** Transportation System Enhancements
Project Summary: Implement traffic calming measures at selected corridors and intersections to improve
CIP No.: C61000 safety for all users.

Project Description:

Alameda's Vision Zero Action Plan will include measurable actions to increase street safety with the goal of eliminating traffic fatalities and severe injuries. This Plan will use crash data analysis, best practices and community input to identify the policies and actions that will be most effective at reducing traffic violence in Alameda.

This project will fund projects to increase street safety for vulnerable users, including daylighting at intersections to improve visibility. The planned corridors include segments of Lincoln Avenue, Park Street, Santa Clara Avenue, and Webster Street.

Other safety measures include high visibility crosswalks and other intersection striping, and infrastructure such as curb bulb-outs and pedestrian refuge islands.



Project Funding

Fund	FY 19-20	FY 20-21
Gas Tax	\$50,000	\$50,000
Development Impact Fee, Trans	\$200,000	\$200,000
Total FY19-21	\$500,000	

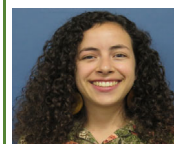
Results from 2019-2021:

The City has implemented daylighting to increase visibility at intersections on high injury corridors, including sections of Grand Street, Central Avenue, Main Street and Otis Drive.

Future Years

With adoption of the Vision Zero Policy and further data analysis, the City will continue to use a data-driven process to identify priority locations for improving street safety.

Responsible Staff Member:



Areli Vazquez-Muñoz
Assistant Engineer

Phone: 510-747-7939

email: AVazquez@alamedaca.gov

Project Description

SAFE ROUTES TO SCHOOL

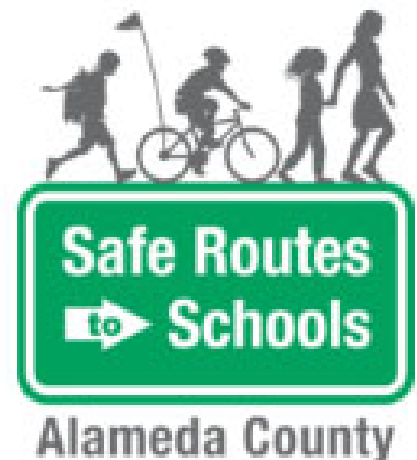
Lead Department: Public Works **Project Type:** Transportation System Enhancements
Project Summary: Implement street safety improvements near school sites
CIP No.: C62000

Project Description:

The City of Alameda participates in the Alameda County Safe Routes to School program. This program includes assessments of school sites and recommend changes to improve safety for students walking and biking to school. To date, there have been assessments completed for the following schools in Alameda:

Academy of Alameda
Earhart Elementary School
Edison Elementary
Franklin Elementary
Love Elementary (formerly Henry Haight)
Maya Lin
Nea Community Learning Center
Wood Middle

This project will provide funding to design and implement physical improvements for safety near school sites, using the school safety assessment as a starting point.



Project Funding

Fund	FY 21-22	FY 22-23
Measure BB - LSR	\$100,000	\$100,000
Meas. B Bike/Ped	\$46,000	
Meas. BB Bike/Ped	\$38,000	
Grant funding	\$84,000	\$0

Total FY21-23 \$368,000

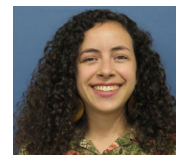
Results from 2019-2021:

This is a new project.

Future Years

The city will continue to participate in the Alameda County Safe Routes to School program. School sites will be prioritized for safety improvements to make students feel comfortable walking and biking to school.

Responsible Staff Member:



Areli Vazquez-Muñoz
Assistant Engineer

Phone: 510-747-7939

email: AVazquez@alamedaca.gov

Project Description

ACTIVE TRANSPORTATION PLAN IMPLEMENTATION

Lead Department: Transportation Planning **Project Type:** Transportation System Enhancements
Project Summary: Implement bicycle and pedestrian improvements developed through the Active
CIP No.: C63000 Transportation Plan

Project Description:

The City of Alameda is dedicated to providing safe, comfortable and accessible ways for people of all ages and all abilities to walk and bicycle throughout the city. From fall 2019 through 2021, the City developed the Alameda Active Transportation Plan, which will update the existing Pedestrian Plan (2009) and Bicycle Master Plan (2010).

The Alameda Active Transportation Plan will focus on:

- Safety
- Comfort for user
- Connectivity
- Equity
- Mode share

The Plan builds upon the extensive work done to date to develop innovative, yet realistic, recommendations for walking and biking infrastructure and support programs..

This project will begin the implementation phase. Funds will be used for design, matching funds for grants, pilot projects, and construction of new infrastructure.



Project Funding

Fund	FY 21-22	FY 22-23
Meas. BB LSR	\$100,000	\$500,000

Total 2021-23 \$600,000

Results from 2019-2021:

The City developed a draft plan, including a finalized bikeway network, pedestrian priorities, program and policy recommendations, prioritization of recommendations and an implementation plan. The draft plan will be available for public review in late 2021, and final Plan is expected to be adopted by City Council in early 2022.

Future Years

The City will continue to develop projects to improve safety and connectivity for people biking and walking.

Responsible Staff Member:



Rochelle Wheeler
Senior Transportation
Coordinator
510-747-7945
email: rwheeler@alamedaca.gov

Project Description

TRAFFIC SIGNAL MODERNIZATION AND SMART CITIES

Lead Department: Transportation Planning **Project Type:** Transportation System Enhancements
Project Summary: Construct safety improvements on Central Avenue from Main Street to Sherman
CIP No.: C64000

Project Description:

The City of Alameda initiated a Smart City Master Plan to guide the use of technology to improve community members' lives. The plan will focus on connecting community members, especially lower-income households and small businesses, and on ensuring City activities are transparent, responsive, equitable and secure. The Smart City initiatives to consider include more equitable internet access, traffic signal synchronization, more energy efficient street lights, remote lighting, irrigation for enhanced water conservation, multimodal citywide traffic counts, citywide parking data, enhanced transportation safety measures, better connected City buildings and economic development opportunities.

This project will begin the early implementation phase. Funds will be used for design, matching funds for grants, pilot projects, and construction of new infrastructure.



Current Budget

Fund	FY 21-22	FY 22-23
Measure B/BB LSR	\$0	\$100,000
Total 2021-23	\$100,000	

Results from 2019-2021:

In January 2021, the City began a one-year process to review existing conditions, conduct needs assessments with focus groups, develop goals and objectives, assess community needs, identify gaps in existing infrastructure and make recommendations.

Future Years

This project will invest in communications infrastructure to integrate various city systems to provide improved services to community members.

Responsible Staff Member:



Gail Payne
Senior Transportation
Coordinator
510-747-6892
email: gpayne@alamedaca.gov

Project Description

CENTRAL AVENUE SAFETY IMPROVEMENTS

Lead Department: Transportation Planning **Project Type:** Transportation System Enhancements
Project Summary: Construct safety improvements on Central Avenue from Main Street to Sherman
CIP No.: C65600

Project Description:

The Central Avenue project, which totals 1.7 miles, is between Main Street/Pacific Avenue and Sherman Street/Encinal Avenue. It improves safety for all street users including people who walk, bicycle, take the bus or drive. The project reduces lanes from four to three, and includes a center turn lane, a two-way separated bikeway adjacent to schools and bike lanes in the Gold Coast area between Eighth Street and Sherman Street, curb extensions, pedestrian refuge islands, traffic signal modifications, rectangular rapid flash beacons, new crosswalks, enhanced bus stops, street trees and rain gardens. The work also includes roundabouts: at Main Street/Pacific Avenue/Central and at Third/Taylor/Central. Two additional roundabouts (pending funding) are planned at Fourth/Central and Sherman/Encinal/Central.

The total expenditure for the Caltrans required project initiation document effort is not to exceed \$557,000. The subsequent analysis for the Webster Street/Central Avenue intersection, environmental review and design is budgeted for \$2,000,000. Construction is budgeted for \$12.2 million. Total project costs: \$15,257,000.



Project Funding

Previously Approved

DIF Transp.	\$150,000
General Fund	\$748,000
Measure B/BB	\$1,679,000
ATP Grant	\$480,000
Subtotal	\$3,057,000

Current Budget

Fund	FY 21-22	FY 22-23
ATP/CMAQ/STP Grants	\$0	\$10,800,000
Measure B/BB LSR	\$0	\$1,080,000
Veh. Reg. Fee	\$0	\$320,000

Total 2021-23 \$12,200,000

Results from 2019-2021:

In April 2021, the City Council approved the final concept for the project. The consultant team prepared documents needed for environmental clearance that will lead to the final design and construction documents.

Future Years

This project will connect with other street safety improvements, Alameda Point, and the bicycle network.

Responsible Staff Member:



Gail Payne
 Senior Transportation
 Coordinator
 510-747-6892
 email: gpayne@alamedaca.gov

Project Description

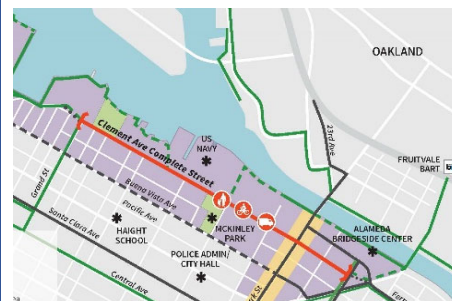
CLEMENT AVENUE SAFETY IMPROVEMENTS

Lead Department: Transportation Planning **Project Type:** Transportation System Enhancements
Project Summary: Construction of safety improvements on Clement Avenue between Grand Street and
CIP No.: C65200 Broadway

Project Description:

The project creates a complete street and constructs a major portion of the Cross Alameda Trail while ensuring that this designated truck route is in a state of good repair. Clement Avenue is the main thoroughfare in the Northern Waterfront Priority Development Area and is a gateway to Oakland and beyond. This Clement Avenue project runs between Broadway and Grand Street, which is 1.2 miles in length, and includes a separated bikeway, curb extensions, traffic signal modifications, rectangular rapid flashing beacon, sidewalk/curb ramp improvements, railroad track removal and street trees.

Excessive speeds, challenging crossings for pedestrians and a lack of bicycle facilities cause safety concerns along this segment of Clement Avenue. The planning, outreach, concept approval and preliminary engineering was funded in the 17-19 Capital Budget at \$641,000. The final design was funded in the 19-21 Capital Budget at \$1,030,000. Funding in FY 21-22 provides a construction budget of \$5,172,000. Total project cost is \$6,843,000.



Project Funding

Previously Approved

DIF Transp.	\$74,000
Measure B LSR	\$463,000
Federal Grant	\$1,134,000
Subtotal	\$1,671,000

Current Budget

Fund	FY 21-22	FY 22-23
ACTC Grant	\$4,500,000	\$0
Measure B LSR	\$472,000	\$0
Mea. B/BB Bike		
Ped	\$200,000	\$0

Total 2021-23 \$5,172,000

Results from 2019-2021:

In July 2020, the City Council approved the final concept for the project. The consultant team prepared documents needed for environmental clearance that will lead to the final design and construction documents.

Future Years

The project is will connect to planned projects to the east and west that will provide connectivity across Alameda.

Responsible Staff Member:



Gail Payne
 Senior Transportation
 Coordinator
 510-747-6892
 email: gpayne@alamedaca.gov

Project Description

LINCOLN/MARSHALL SAFETY IMPROVEMENTS

Lead Department: Public Works **Project Type:** Transportation System Enhancements
Project Summary: This project will evaluate the Lincoln/Marshall corridor between Fourth Street and Park Street.
CIP No.: C65700

Project Description:

The Marshall Ave/Lincoln Avenue corridor connects neighborhoods across Alameda. It serves multiple destinations including schools, commercial districts, parks and places of worship. The corridor is also a High Injury Corridor with several High Crash Intersections, according to the Alameda Vision Zero Crash Analysis.

This project will develop a design concept for the corridor by evaluating the current uses, traffic patterns, intersection controls, and crash data. The design will also draw on recommendations from the Active Transportation Plan. Community involvement will be a priority, as the roadway serves so many different users. The final design and implementation will likely be phased in over time, as the street is resurfaced and intersection improvements are constructed.



Project Funding

Fund	FY 21-22	FY 22-23
Measure BB -LSR	\$200,000	\$0
Total 2021-23	\$200,000	

Results from 2019-2021:

This is a new project.

Future Years

Improvements to the corridor will be implemented over time, as the street is resurfaced and intersection improvements are constructed.

Responsible Staff Member:



Robert Vance
Supervising Civil
Engineer
Phone: 510-747-7972
email: rvance@alamedaca.gov

Project Description

WEST END BICYCLE/PEDESTRIAN CROSSING

Lead Department: Transportation Planning **Project Type:** Transportation System Enhancements
Project Summary: Advance planning for a bicycle and pedestrian bridge between Alameda and Oakland
CIP No.: C65900

Project Description:

The City, in partnership with the City of Oakland, is advancing the implementation of a bicycle and pedestrian bridge to create high quality multi-modal access between Oakland's Jack London Square area and west Alameda. This project is the long-term crossing option identified in the 2009 Estuary Crossing Study.

Currently, the only bicycle and pedestrian access is inside the Posey Tube, on a narrow three-foot wide walkway. Only approximately 100 people brave this crossing each day. A new bicycle and pedestrian bridge will provide a safe and convenient sustainable travel option between commercial districts, the downtown Oakland employment center, the many residents in both cities, and to and from the BART stations that connect people to the rest of the Bay Area region.

This project will develop the Project Initiation Document (PID) in collaboration with the Alameda CTC. The PID will allow the bridge to become a fundable project by further defining potential build alternatives and landing locations on both sides of the estuary, preparing detailed cost estimates, outlining environmental and permitting requirements, exploring potential ownership and maintenance of the bridge, plus identifying any other major elements that should be investigated.



Project Funding

Fund	FY 21-22	FY 22-23
ACTC Grant	\$1,355,000	\$200,000
Total 2021-23	\$1,555,000	

Results from 2019-2021:

In January, the City published the Estuary Crossing Study: Detailed Feasibility and Travel Demand Analysis, after it received a letter from the Coast Guard providing their support for moving forward with the next phases of the bridge development.

Future Years

The City will continue working with regional partners develop this project and fund the construction and long-term operation and maintenance costs.

Responsible Staff Member:



Rochelle Wheeler
Senior Transportation
Coordinator
510-747-7945

email: rwheeler@alamedaca.gov

Project Description

VETERANS COURT & BAY FARM ISLAND SEAWALL

Lead Department: Public Works **Project Type:** Sea Level Rise Adaptation
Project Summary: Develop and implement adaptation strategies for sea level rise at Veteran's Court and
CIP No.: C71100 the Bay Farm Island lagoon outlet seawall

Project Description:

Project Description:

In December 2018, FEMA issued updated flood maps that include Veterans Court within the 100-year flood zone. Both Veterans Court itself, and the top of the seawall at the end of it are at a lower elevation than the 100-year Base Flood Elevation, and serve as a point of entry for potential coastal flooding on Bay Farm Island. In addition, short stretch of perimeter berm/seawall to the west, along Bay Farm Island's northern shoreline, is also an entry point for coastal flooding at the 100-year event. Downstream properties would likely be subject to flooding if the 100-year flood event should occur.

This project focuses on prevention of Bay water from entering this area due to overtopping of the existing seawalls or the failure of the seawalls. Work planned includes long-term solutions that will serve multiple functions: they will act as a barriers to coastal flooding in the event the walls fail, they will be built higher than the 1% annual chance flood and thereby remove coastal flood entry points, and they will be constructed high enough to account for a moderate sea level rise scenario.

The available funds will be used for matching funds for potential grants to advance the design and implementation of this project.



Project Funding

Fund	FY 21-22	FY 22-23
Stormwater	\$100,000	
Total 2021-23		\$100,000

Note: Funds for this project were budgeted in previous years.

Results from 2019-2021:

The Climate Action and Resiliency Plan included Veterans Court and the Bay Farm Island lagoon outlet seawall as a priority projects. The City identified grant opportunities to advance the design and construction of the projects.

Future Years

This project is one of the first significant investments to protect Alameda from the current 100-year flood risk and anticipated sea level rise. Significant future investment will be necessary at other locations throughout the Alameda coastline to prepare for projected sea level rise.

Responsible Staff Member:



Andrew Nowacki
Associate Engineer
510-747-7941

email: anowacki@alamedaca.gov

Project Description

NORTHERN SHORELINE - POSEY/WEBSTER TUBES

Lead Department: Public Works **Project Type:** Sea Level Rise Adaptation
Project Summary: Develop and implement adaptation strategies for sea level rise along the northern waterfront near the Posey and Webster tubes.
CIP No.: C71300

Project Description:

Project Description:

In December 2018 FEMA issued updated flood maps and the northern shoreline behind the Webster and Posey Tubes is shown as a coastal entry point for the 100-year flood. The shoreline in this area is below the 100-year Base Flood Elevation, and overtopping of it results in the flood zone extending down Webster Street and to other surrounding areas. Properties downstream from the shoreline would likely be subject to flooding if the 100-year flood event should occur.

This project focuses on prevention of Bay water from entering the Posey and Webster tubes, properties in the affected area, and roadways providing egress in and out of the area due to the 100-year event or a future sea level rise scenario.

Work planned includes a long-term solution (such as a seawall) along the northern waterfront that will serve multiple functions: it will act as a barrier to coastal flooding, it will be built higher than the 1% annual chance flood and thereby remove one of the coastal flood entry points, and it will be constructed high enough to account for a moderate sea level rise scenario.

These funds are intended as matching funds for potential grants to advance the planning and design of this project.



Project Funding

Fund	FY 21-22	FY 22-23
Measure BB LSR	\$200,000	
Total 2021-23	\$200,000	

Results from 2019-2021:

The Climate Action and Resiliency Plan included the Northern Waterfront as a priority project. The City progressed to 10% design of a seawall that would account for sea level rise and identified grant opportunities to advance the design and construction of this project.

Future Years

This project is one of the first significant investments to protect Alameda from the current 100-year flood risk and anticipated sea level rise. Significant future investment will be necessary at other locations along the Alameda coastline to prepare for projected sea level rise.

Responsible Staff Member:



Andrew Nowacki
Associate Engineer
510-747-7941

email: anowacki@alamedaca.gov