



## GENERAL NOTES:

- THE OVERALL SCOPE OF WORK FOR THIS PROJECT IS TO RE-WIRE AND RECONNECT EXISTING STREETLIGHT LUMINARIES USING NEW UNDERGROUND RACEWAY INSTALLED AS DETAILED.
- WORK HOURS ARE LIMITED BETWEEN 7:00 A.M. AND 5:00 P.M. NO LANE CLOSURE OR NOISE GENERATED PRIOR TO 8:00 A.M.
- INFORMATION CONCERNING EXISTING UTILITIES IS NOT GUARANTEED. LOCATIONS SHOWN ON THE PLANS ARE APPROXIMATE ONLY. CONTRACTOR SHALL REQUEST THAT UNDERGROUND FACILITIES BE LOCATED AND MARKED IN THE FIELD A MINIMUM OF 48 HOURS PRIOR TO THE START OF CONSTRUCTION BY CALLING UNDERGROUND SERVICE ALERT (U.S.A.) AT 800-227-2600. CONTRACTOR SHALL NOTIFY THE CITY OF ANY POTENTIAL CONFLICT WITH EXISTING UTILITIES PRIOR TO CONSTRUCTION.
- AT LEAST 72 HOURS PRIOR TO BEGINNING WORK ON A SECTION OF STREET, CURB OR SIDEWALK THAT WILL AFFECT USE OF THE PARKING LANE, THE CONTRACTOR SHALL NOTIFY, BY "NO PARKING - TOW AWAY" SIGNS ON BARRICADES, ALL AFFECTED PROPERTY OWNERS, RESIDENTS, BUSINESSES AND AGENCIES ADJACENT TO THAT SECTION OF STREET. SIGNS MUST BE OBTAINED FROM THE CITY'S DEPARTMENT OF PUBLIC WORKS AND POSTED 72 HOURS IN ADVANCE.
- DRAWING ARE SCHEMATIC ACTUAL BOX LOCATIONS AND EXISTING UTILITIES ARE TO BE VERIFIED IN THE FIELD. COORDINATE WITH CITY PROJECT MANAGER.
- THE CONTRACTOR SHALL PROCURE ALL LICENSES, INCLUDING CITY OF ALAMEDA BUSINESS LICENSES AND PAY ALL CHARGES AND FEES.
- THE CONTRACTOR IS RESPONSIBLE FOR ALL TRAFFIC CONTROL INCLUDING POSTING OF ADEQUATE SIGNAGE. WHERE POSSIBLE A TRAFFIC LANE MUST BE OPEN AT ALL TIMES. WHERE WORK REQUIRES ENTIRE STREET BLOCK TO BE CLOSED THE CONTRACTOR SHALL PROVIDE BARRIERS AND ADEQUATE SIGNAGE AT INTERSECTIONS. TRAFFIC CONTROL PLAN SHALL BE SUBMITTED DURING THE PRE-CONSTRUCTION MEETING.
- SWEEPS IN AND OUT OF THE BOXES ARE PART OF THE INSTALLATION COST OF THE BOXES. ADJUSTMENT AND INTERCEPTING CONDUITS ARE PART OF BOX INSTALLATION COST. CONDUIT WILL BE PAID BASE ON WALL TO WALL FOOTAGES. THE NUMBER OF BENDS IS UNKNOWN CONSIDER THIS UNKNOWN WHEN BIDDING. FOR CONDUITS AS NO ADDITIONAL COMPENSATION WILL BE PAID.
- THE CONTRACTOR AFTER AWARD OF CONTRACT MAY PROPOSE TO CITY ALTERNATIVE METHODS OTHER THAN AS SHOWN IN THIS DRAWING INCLUDING NEW TRENCH OR DIRECTIONAL DRILLING ROUTES AND CONDUIT INSTALLATION METHODS. THE PROPOSAL WILL BE REVIEWED AND SUBJECT TO APPROVAL BY CITY. THE COST WILL BE BASED ON THE SUBMITTED ORIGINAL BID.
- ALL WORK MUST BE COMPLETED IN COMPLIANCE WITH MATERIAL AND INSTALLATION CRITERIA FOR STREET LIGHTING SYSTEM OF THE CITY OF ALAMEDA. APPLICABLE LOCAL STATE AND FEDERAL CODES AND LAWS WHICH PERTAIN TO SUCH WORK.
- ALL CONDUITS NOT TERMINATED IN A SPLICE BOX MUST BE CAPPED AT THE END. EMPTY CONDUITS BETWEEN PULLBOXES SHALL BE PROVIDED WITH PULL ROPE.
- ALL CHANGES IN GRADE ARE TO BE ACCOMPLISHED WITH LONG GENTLE SLOPES. ABRUPT CHANGES IN GRADE ARE NOT PERMISSIBLE.
- FINAL ACCEPTANCE OF THE WORK WILL BE MADE BY CITY OF ALAMEDA INSPECTORS AFTER ALL THE STREET IMPROVEMENTS AND REPAIRS HAVE BEEN COMPLETED. ANY DAMAGED CONDUIT, STREET LIGHT AND/OR SERVICE BOX SHALL BE REPLACED BY THE CONTRACTOR AT THE CONTRACTORS EXPENSE.
- BIDS SHALL INCLUDE COST OF DEWATERING AND SHORING.
- ALL CONDUIT SHALL BE MANDRELLED WITH A MANDREL APPROVED BY THE CITY INSPECTOR AFTER FINAL COMPACTION HAS BEEN COMPLETED. IT SHALL INCLUDE ALL EXISTING CONDUITS THAT ARE TO BE INTERCEPTED BY NEW CONDUITS OR BOXES. ALL CONDUITS SHALL BE PROVIDED WITH 2500LB LUBRICATED PULL TAPE.
- ALL MAJOR FIELD CHANGES TO THE DESIGN SHALL BE DONE THROUGH A CHANGE ORDER FORM APPROVED BY BOTH INSPECTOR AND ENGINEER. ALL OTHER MINOR FIELD CHANGES TO THE DESIGN TO BE APPROVED BY THE CITY INSPECTOR AND RECORDED ON THE RECORD DOCUMENTS.
- WHERE CONCRETE PULLBOXES ARE ABANDONED IN PLACE REMOVE (E) CONDUIT & CONDUCTORS FROM WITHIN BOX AND REMOVE TOP 6"± OF THE BOX. BACKFILL REMAINING BOX WITH SAND TO WITHIN 4" OF (E) GRADE. BACKFILL REMAINING 4" WITH MATCHING SURROUNDING MATERIAL (EARTH, CONCRETE, ASPHALT, ETC.). SEE ELECTRICAL SPECIFICATION.
- ALL WORK SHALL BE SUBJECT TO CITY OF ALAMEDA AND ALAMEDA MUNICIPAL POWER INSPECTION.
- CONTRACTOR SHALL COMPLY WITH CITY OF ALAMEDA URBAN RUN-OFF AND STORM WATER POLLUTION PREVENTION (SWPPP) PROGRAM.
- BID PRICE SHALL INCLUDE AN ITEMIZED UNIT PRICE TO REMOVE (E) STREET LIGHT FOUNDATIONS AND REPLACE WITH (N) STREET LIGHT FOUNDATIONS DETAILED ON SHEET E5.0 DETAILS ALSO (1 OF 2 & 2 OF 2). THE UNIT PRICING SHALL INCLUDE REMOVAL OF (E) STREET LIGHT & POLE FROM (E) FOUNDATION & RE-INSTALLING (E) STREET LIGHT & POLE ON (N) FOUNDATION. IF DURING CONSTRUCTION ANY POLE FOUNDATION IS DEEMED UNUSABLE PER THE PROJECT PLAN THE CONTRACTOR SHALL CONSULT WITH THE CITY TO REPLACE SAID FOUNDATION. REPLACEMENT COST FOR SAID FOUNDATION SHALL BE BASED ON THE UNIT PRICE INCLUDED IN THE CONTRACTORS BID AND ADJUSTED FOR ANY UNFORESEEN CONDITIONS. PRIOR TO PROCEEDING WITH FOUNDATION REPLACEMENT WORK THE CITY WILL ISSUE A WRITTEN CHANGE ORDER WHICH INCLUDES ANY CHANGE IN THE CONTRACT PRICE.
- ELECTRICAL SPECIFICATION (BOOK FORMAT) PART OF CONTRACT DOCUMENTS; REVIEW ELECTRICAL SPECIFICATIONS AND COORDINATE.

## IRRIGATION NOTES:

- ALL DISTURBED IRRIGATION SHALL BE REPLACED IN KIND.
- ALL IRRIGATION HEADS SURROUNDING THE PROPOSED IMPROVEMENTS SHALL BE REPLACED OR ADJUSTED SO THAT SPRAY IS LIMITED TO THE LANDSCAPED AREAS AND DOES NOT HIT THE PROPOSED IMPROVEMENTS.
- EXISTING IRRIGATION EQUIPMENT (PIPES, HEADS, CONDUIT, WIRES, ETC.) LOCATED UNDER PROPOSED IMPROVEMENTS SHALL BE RE-ROUTED AROUND CONCRETE PADS. A ONE FOOT MINIMUM CLEARANCE SHALL BE PROVIDED FROM IMPROVEMENTS (CONCRETE PADS, FENCES, ETC.) TO IRRIGATION EQUIPMENT. ALL IRRIGATION LINES REQUIRED TO BE UNDER CONCRETE SHALL BE SLEEVED WITH 2" SCH 40 CONDUIT.
- NEW IRRIGATION HEADS MAY BE REQUIRED TO PROVIDE COVERAGE FOR IRRIGATION HEADS REMOVED FOR IMPROVEMENTS.


## ARBORIST NOTES AND TREE PRESERVATION:

- CONTRACTOR SHALL NOTE THAT THE PROJECT IS LOCATED WITHIN STREETS THAT ARE LINED WITH LARGE TREES THAT HAVE EXTENSIVE ROOT STRUCTURES. THE PROPOSED WORK HAS BEEN LOCATED IN AN ATTEMPT TO MITIGATE IMPACTS TO THE TREES AND ROOTS TO THE EXTENT FEASIBLE; HOWEVER, THE CONTRACTOR SHOULD EXPECT TO ENCOUNTER ROOTS WHERE WORK OCCURS WITHIN THE DRIP ZONE OF EXISTING TREES.
  - WORK WITHIN AND ADJACENT TO CURBS AND SIDEWALKS WILL ENCOUNTER THE GREATEST DENSITY OF ROOTS AND WILL REQUIRE HAND TRENCHING AND TUNNELING.

IT MAY BE NECESSARY TO ADJUST THE LOCATION OF PULLBOXES AS NECESSARY TO AVOID IMPACT TO TREES AND ROOTS. THE CONTRACTOR SHALL REVIEW THE FIELD CONDITIONS WITH THE CITY DURING CONSTRUCTION. CONTRACTOR SHALL ADJUST CONDUIT BURIAL DEPTHS AS REQUIRED TO AVOID INTERFERENCE WITH TREE ROOTS, COORDINATE ALL WORK ASSOCIATED WITH THE TREES WITH THE CITY ARBORIST.
- CONTRACTOR SHALL NOTIFY CITY 72 HOURS IN ADVANCE OF ANY WORK REQUIRING DIGGING AROUND OR WITHIN THE DRIP LINE OF EXISTING TREES.
- ROOTS LARGER THAN 2 INCHES IN DIAMETER SHALL NOT BE DAMAGED OR CUT AT ANY TIME WITHOUT APPROVAL FROM THE CITY'S ARBORIST. CONTRACTOR SHALL HAND TRENCH AND TUNNEL UNDER ROOTS LARGER THAN 2 INCHES IN DIAMETER. NEW CONDUITS SHALL BE INSTALLED SUCH THAT A 2 INCH CLEARANCE TO THE TREE ROOT IS PROVIDED.
- IF INJURY SHOULD OCCUR TO ANY TREE DURING CONSTRUCTION, IT MUST BE REPORTED TO THE CITY PROJECT ARBORIST WITHIN 6 HOURS SO THAT APPROPRIATE TREATMENTS CAN BE APPLIED. THE CITY ARBORIST/PROJECT ARBORIST SHALL BE THE SOLE JUDGE OF THE CONDITION OF ANY TREE.
- CONTRACTOR MUST MEET ANSI 300 PART B AND PROVIDE A MITIGATION PLAN WHEN WORKING WITHIN SIX TIMES THE DIAMETER AT BRESTH HEIGHT OF ALL TREES. THE PLAN MAY REQUIRE REMOVAL. THE FOLLOWING ASSOCIATED COSTS OF TREE REMOVAL NEED TO BE ESTABLISHED PRIOR TO TRENCHING OR DAMAGE TO THE EXISTING TREES.
  - REMOVAL COST.
  - REPLACEMENT COST.
  - ASSET VALUE COMPENSATION COST.
- MEANS OF ROOT PRUNING SHALL BE IDENTIFIED TO LEAVE SMOOTH ROOT SURFACES, NO ALTERNATIVE IS ACCEPTABLE (FRAYING).

## SYMBOLS AND ABBREVIATIONS

SYMBOLS & ABBREVIATIONS SHOWN ARE FOR GENERAL USE  
DISREGARD THOSE WHICH DO NOT APPEAR ON THE PLANS

<p><b>LIGHT FIXTURES</b></p>  STREET LIGHT-EXISTING 15'± POLE TOP FIXTURE 1234 = AMP POLE NUMBER (OBSOLETE) YYY = AMP TYPE (OBSOLETE) #12345 = CITY POLE NUMBER	<p><b>CONDUIT/WIRING</b></p> <p>— EXPOSED</p> <p>--- UNDER SLABS OR UNDERGROUND</p> <p>— HOMERUN TO PANEL, TERMINAL OR EQUIPMENT INDICATED</p> <p>--- EXISTING CONDUIT</p> <p>— CONDUIT STUB-OUT</p> <p>— CONDUIT UP OR DOWN-AS NOTED</p> <p>////// INDICATES (E) TO BE REMOVED</p> <p><b>MISCELLANEOUS</b></p> <p>— GROUND ROD-DIRECT BURIED</p> <p>— GROUND ROD-WITH ACCESSIBLE BOX</p> <p>○ FEEDER TAG; SEE FEEDER SCHEDULE</p> <p>○ SHEET NOTE TAG</p> <p>☒ TRANSFORMER PAD MOUNT OR DRY TYPE</p> <p>☒ SWITCHGEAR OR MCC</p> <p>☒ ELECTRICAL SECONDARY CONCRETE PULLBOX; 17" X 30" X 26"D. UON ON PLANS</p> <p>■ EXISTING CONCRETE PULLBOX; 17" X 17" X 24"D. UON ON PLANS</p> <p>☒ EXISTING STEEL STORM DRAIN MANHOLE; 36" X 36" UON ON PLANS</p> <p>+48" INDICATES MOUNTING HEIGHT TO CENTER OF DEVICE OR EQUIP. ABOVE FINISHED GRADE.</p> <p>○<sub>b</sub> ○<sub>b</sub> SUBSCRIPT LETTER INDICATES CONTROL</p> <p>○<sub>3</sub> ○<sub>2</sub> FIGURE INDICATES BRANCH CIRCUIT NUMBER</p>
---	--

<b>ABBREVIATIONS</b>			
AFG	ABOVE FINISHED GRADE	(N)	NEW
AMP	ALAMEDA MUNICIPAL POWER	NIC	NOT IN CONTRACT
ARCH.	ARCHITECT	NL	NIGHT LIGHT
B.C.	BARE COPPER	OFCI	OWNER FURNISHED CONTRACTOR INSTALLED EQUIPMENT
C.	CONDUIT	PB	PULLBOX
C.K.	CIRCUIT	PH.	PHASE
C.O.	CONDUIT ONLY	POC	POINT OF CONNECTION
CONC.	CONCRETE	P/O	PART OF
CONTR.	CONTRACTOR	SL	STREET LIGHT
DISC.	DISCONNECT	SW	SWITCH
(E)	EXISTING	SWBD	SWITCHBOARD
ELEC.	ELECTRICAL	T. TELE.	TELEPHONE
EM	EMERGENCY	TERM.	TERMINAL
(F)	FUTURE	TSP	TWISTED
F.A.	FIRE ALARM		
G. GND.	GROUND (ELEC)		SHIELDED PAIR
GEC	GROUNDING ELECTRODE CONDUCTOR	TV	TELEVISION
GFI	GROUND FAULT INTERRUPT	UG	UNDERGROUND
ISO GND.	ISOLATED GND.	UON	UNLESS OTHERWISE NOTED
KA	KILO AMPERE	WP	WEATHERPROOF
MECH.	MECHANICAL	XFMR	TRANSFORMER
MCF	MOTOR CIRCUIT PROTECTOR		

DATE	02/03/26
SCALE	AS SHOWN
DESIGN	T.P.
DRAWN	C.L.
CHECKED	T.P.

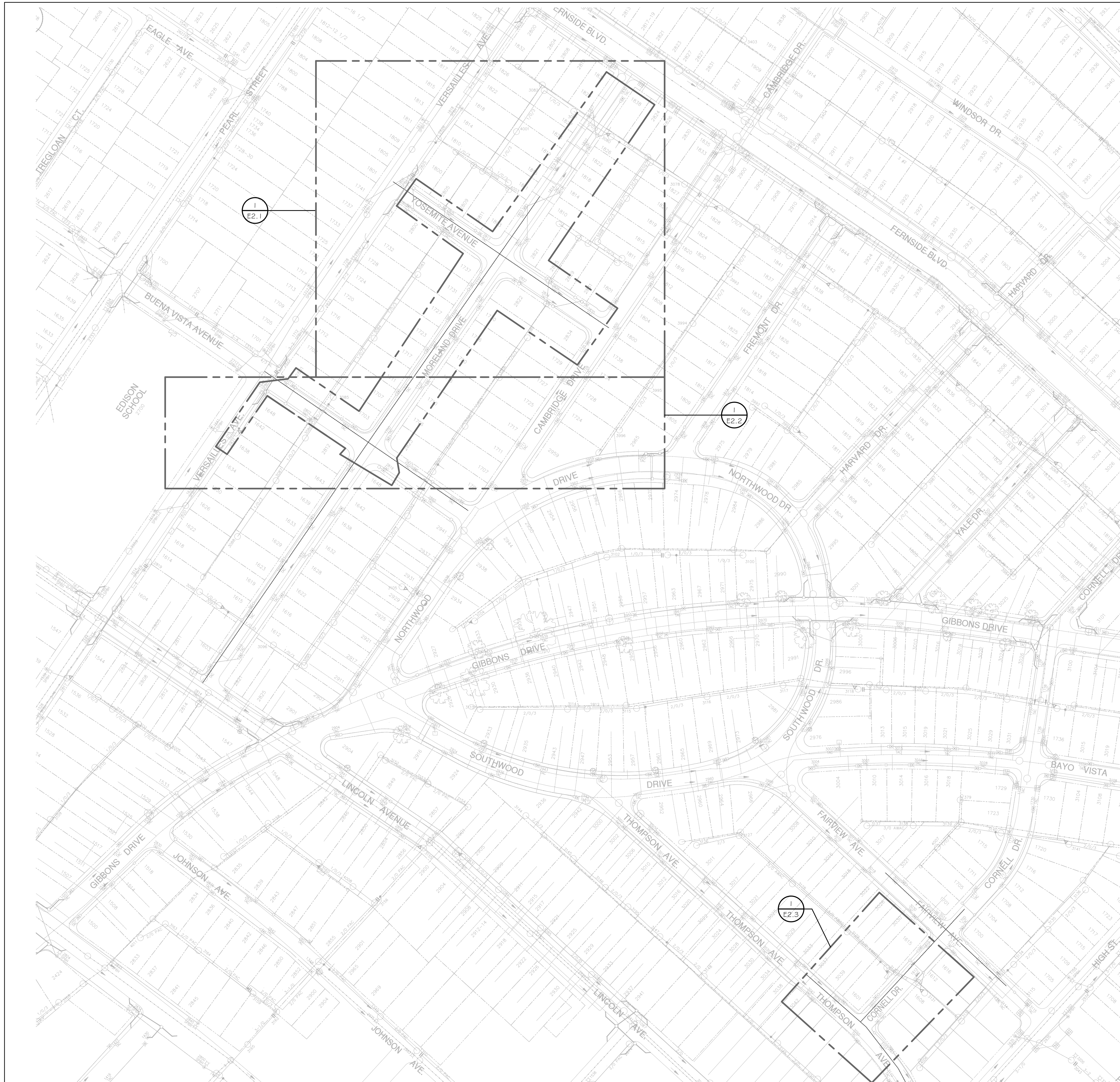
NO.	DATE	APPROVED
1		
2		
3		
4		
5		
6		
7		
8		
9		
10		
11		
12		
13		
14		
15		
16		
17		
18		
19		
20		
21		



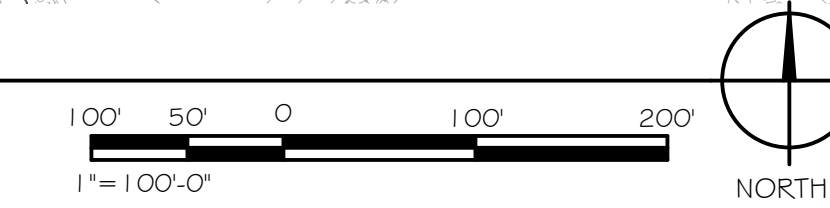
**Schaaf & Wheeler**  
CONSULTING CIVIL ENGINEERS  
2200 RANGE AVENUE, SUITE #201  
SANTA ROSA, CA 95403  
(707) 528-4848

**CITY OF ALAMEDA**  
STREETLIGHT CONDUIT REPLACEMENT - CORNELL DRIVE & THOMPSON AVENUE, MORELAND DRIVE FROM FERNSIDE BOULEVARD TO LINCOLN AVENUE

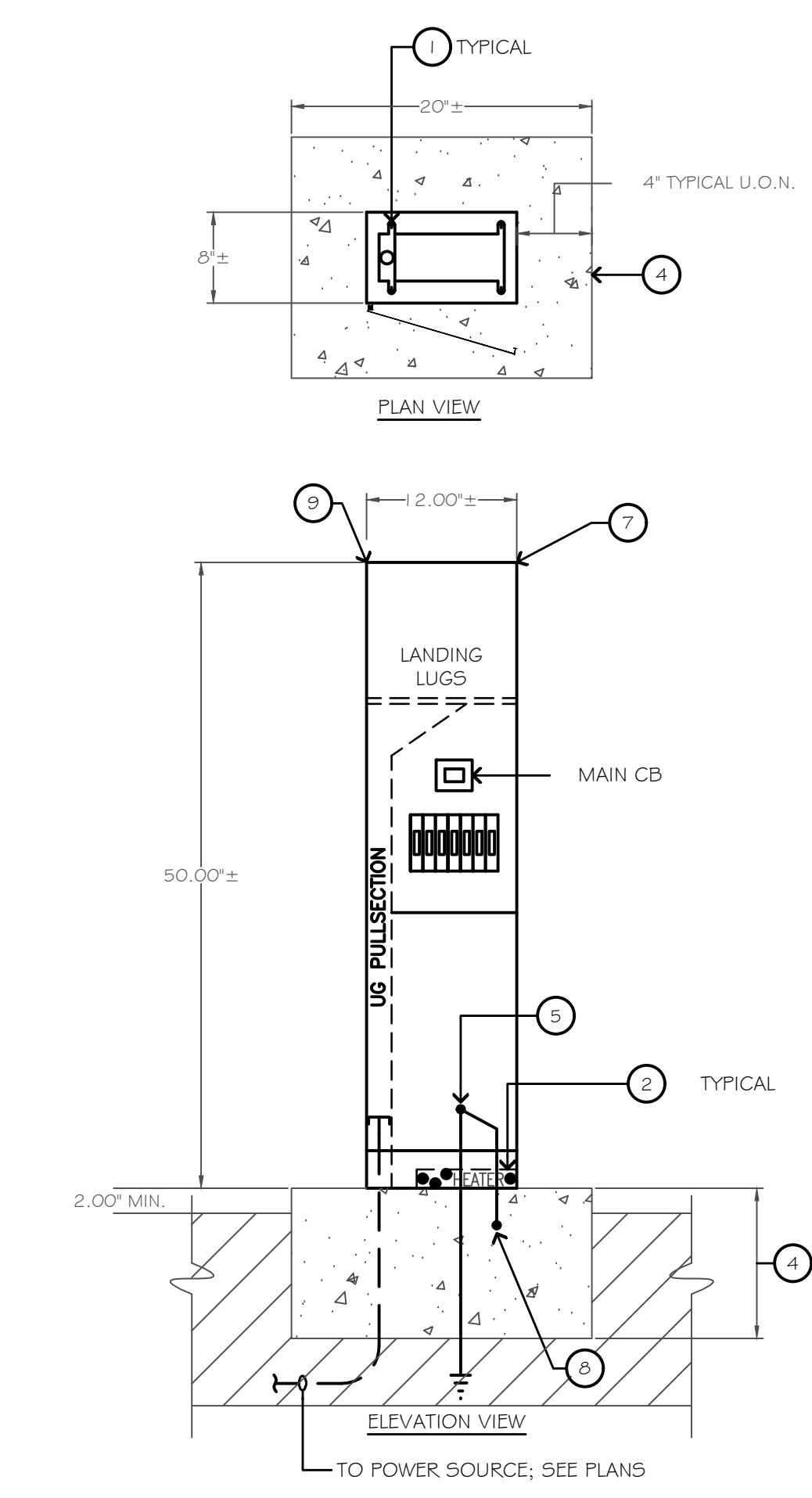
**SYMBOLS & ABBREVIATIONS**



**1** SITE PLAN  
1" = 100'-0"

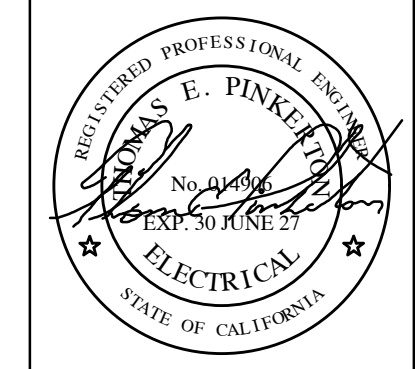


- DETAIL NOTES: (DETAIL 2/E2.0)**
1. BOLT TO PAD USING AMP REQUIREMENTS; SEE SHEET E5.1.
  2. SECTION HEATER, 250W MINIMUM 120V; PROVIDE THERMOSTAT CONTROL.
  3. NOTE NOT USED.
  4. CONCRETE EQUIPMENT PAD & EQUIPMENT ANCHORAGE SHALL BE AS PER AMP REQUIREMENTS; SEE SHEET E5.1.
  5. B.C. SERVICE GROUND BOND NEUTRAL TO SERVICE GROUND; SEE DETAIL 2/E4.0.
  6. NOTE NOT USED.
  7. POWER PEDESTAL SHOWN WITH EXTERIOR DOORS OPENED; SEE ELECTRICAL SPECIFICATION & SHEET E5.1; THE CONTRACTOR SHALL SELECT THE PEDESTAL TO COMPLY WITH AMP DETAIL 1-L-541 (AS EDITED) SHEET E5.1 AND THE ELECTRICAL SPECIFICATION; PROVIDE SUBMITTAL FOR APPROVAL.
  8. BOND TO REBAR #8 BC.
  9. PRIOR TO PEDESTAL INSTALLATION; COORDINATE WITH CITY FOR EXACT INSTALLATION LOCATION.



**2** POWER PEDESTAL ELEVATION  
NO SCALE

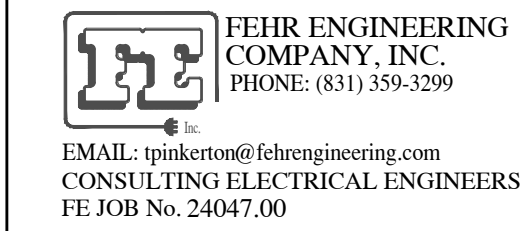
NO	REVISIONS	DATE	APPR



**Schaaf & Wheeler**  
CONSULTING CIVIL ENGINEERS  
2200 RANGE AVENUE, SUITE #201  
SANTA ROSA, CA 95403  
(707) 528-4848

**CITY OF ALAMEDA**  
STREETLIGHT CONDUIT REPLACEMENT - CORNELL  
DRIVE & THOMPSON AVENUE, MORELAND DRIVE FROM  
FERNSIDE BOULEVARD TO LINCOLN AVENUE  
**SITE PLAN**

DATE:	02/03/26
SCALE:	AS SHOWN
DESIGN:	T.P.
DRAWN:	C.L.
CHECKED:	T.P.





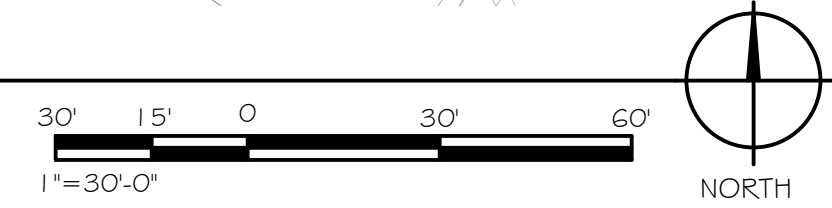
- ### ◇ SHEET NOTES
- (E) POWER SOURCE CONCRETE PULLBOX; REPLACE (E) CONCRETE PULLBOX WITH (N) 22" X 12" CONCRETE PULLBOX; SEE DETAIL 1/E3.0 SIMILAR. MAKE PEDESTAL POWER CONNECTION; SEE DETAIL 1/E4.0.
  - EXTEND POWER CIRCUIT INTO FIXTURE (E) PULLBOX & RECONNECT (E) FIXTURE.
  - FIXTURES SHOWN IN THE AREA OF WORK ARE (E); SEE DETAIL 1/E4.0.
  - REMOVE (E) PULLBOX.
  - INTERCEPT (E) LIGHT FIXTURE CONDUIT; INSTALL (N) PULLBOX; SEE DETAIL 1/E3.0.
  - NOTE NOT USED.
  - REMOVE (E) POLE & FIXTURE FROM (E) FOUNDATION & DEMOLISH (E) FOUNDATION; INSTALL (N) FOUNDATION PER CITY STANDARD DETAIL SL50Q-1 & -2 AS APPLICABLE; SHEET E5.0.
  - INSTALL (N) CONCRETE PULLBOX & RACEWAY TO LIGHT FIXTURE; SEE DETAIL 1/E3.0 SIMILAR.
  - APPROXIMATE PATHS OF (E) UNDERGROUND UTILITIES ARE SHOWN IN AREA OF WORK; COORDINATE WITH CITY FOR EXACT LOCATIONS; WHERE UNCERTAIN LOCATIONS EXIST OR AT CITY REQUEST BE PREPARED TO LOCATE UNDERGROUND UTILITIES; SEE PROJECT SPECIFICATION.
  - PROJECT SCOPE OF WORK IS LIMITED TO WITHIN THE BOUNDARY LINES SHOWN.
  - (N) POWER DISTRIBUTION PEDESTAL. SEE DETAIL 2/E4.0; COORDINATE WITH CITY FOR EXACT MOUNTING LOCATION.
  - REMOVE (E) BOX; PRIOR TO REMOVAL, COORDINATE WITH CITY TO CONFIRM REMOVAL.

GENERAL SHEET NOTES (APPLICABLE TO WITHIN AREA OF WORK, SEE PLANS FOR AREA OF WORK):

- IN THE AREA OF WORK REMOVE EXISTING STREET LIGHTING CONCRETE PULL BOXES UNLESS NOTED OTHERWISE; INSTALL NEW PULL BOXES TO REPLACE REMOVED PULL BOXES; SEE DETAIL 1/E3.0; RE-USE EXISTING RACEWAY TO REMAINING LIGHT FIXTURE.
- EXISTING LIGHT FIXTURES APPROXIMATE LOCATION SHOWN; CONTRACTOR SHALL FIELD VERIFY EXACT LOCATION PRIOR TO BIDDING.

- CITY POLE NUMBERS THIS SHEET:
- 20 FIXTURES THIS SHEET:
- #1433
  - #1730
  - #2813
  - #03557
  - #04336
  - #08221
  - #08268
  - #08522
  - #08524
  - #08525
  - #08526
  - #08527
  - #08550
  - #08551
  - #08552
  - #08553
  - #08554
  - #14397
  - #14398

1 PARTIAL SITE PLAN  
1"=30'-0"



**FEHR ENGINEERING COMPANY, INC.**  
CONSULTING ELECTRICAL ENGINEERS  
FE JOB No. 24047.00  
EMAIL: tpinkerton@fehrengineering.com  
PHONE: (818) 359-3299

DATE	APPR	REVISIONS	NO	DATE	APPR
			1		
			2		
			3		
			4		
			5		
			6		
			7		
			8		
			9		
			10		
			11		
			12		

<b>CITY OF ALAMEDA</b> STREETLIGHT CONDUIT REPLACEMENT - CORNELL DRIVE & THOMPSON AVENUE, MORELAND DRIVE FROM FERNSIDE BOULEVARD TO LINCOLN AVENUE <b>PARTIAL SITE PLAN</b>		<b>Schaaf &amp; Wheeler</b> CONSULTING CIVIL ENGINEERS 2200 RANGE AVENUE, SUITE #201 SANTA ROSA, CA 95403 (707) 528-4848
DATE:	02/03/26	
SCALE:	AS SHOWN	
DESIGN:	T.P.	
DRAWN:	C.L.	
CHECKED:	T.P.	



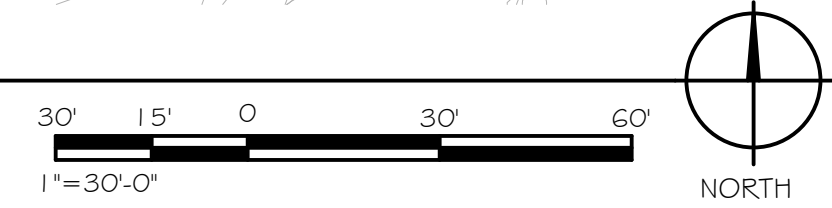
- ### ◇ SHEET NOTES
- (E) POWER SOURCE CONCRETE PULLBOX; REPLACE (E) CONCRETE PULLBOX WITH (N) 22" X 12" CONCRETE PULLBOX; SEE DETAIL 1/E3.0 SIMILAR. MAKE PEDESTAL POWER CONNECTION.
  - EXTEND POWER CIRCUIT INTO FIXTURE (E) PULLBOX & RECONNECT (E) FIXTURE; SEE DETAIL 4/E3.0.
  - FIXTURES SHOWN IN THE AREA OF WORK ARE (E); SEE DETAIL 1/E4.0.
  - REMOVE (E) PULLBOX.
  - NOTE NOT USED.
  - NOTE NOT USED.
  - NOTE NOT USED.
  - NOTE NOT USED.
  - LOCATE (E) CONDUIT STUBBED OUT FROM PULLBOX & EXTEND & CONNECT (N) CONDUIT AS INDICATED.
  - NOTE NOT USED.
  - DUPLICATE CITY POLE NUMBER.
  - RE-USE (E) CONCRETE PULLBOX AS INDICATED.
  - APPROXIMATE PATHS OF (E) UNDERGROUND UTILITIES ARE SHOWN IN AREA OF WORK; COORDINATE WITH CITY FOR EXACT LOCATIONS; WHERE UNCERTAIN LOCATIONS EXIST OR AT CITY REQUEST BE PREPARED TO LOCATE UNDERGROUND UTILITIES; SEE PROJECT SPECIFICATION.
  - PROJECT SCOPE OF WORK IS LIMITED TO WITHIN THE BOUNDARY LINES SHOWN.
  - EXTEND POWER CIRCUIT INTO FIXTURE (E) PULLBOX & RECONNECT (E) FIXTURE.
  - CITY POLE NUMBERS THAT ARE LINED OUT ARE OUTSIDE THE WORK AREA AND ARE RETAINED FOR FUTURE REFERENCE.
  - (N) POWER DISTRIBUTION PEDESTAL. SEE DETAIL 2/E4.0; COORDINATE WITH CITY FOR EXACT MOUNTING LOCATION.
  - REMOVE (E) BOX; PRIOR TO REMOVAL, COORDINATE WITH CITY TO CONFIRM REMOVAL.
  - REPLACE (E) LID WITH (N) LID; MATCH (E).

GENERAL SHEET NOTES (APPLICABLE TO WITHIN AREA OF WORK, SEE PLANS FOR AREA OF WORK):

- IN THE AREA OF WORK REMOVE EXISTING STREET LIGHTING CONCRETE PULL BOXES UNLESS NOTED OTHERWISE; INSTALL NEW PULL BOXES TO REPLACE REMOVED PULL BOXES. SEE DETAIL 1/E3.0; RE-USE EXISTING RACEWAY TO REMAINING LIGHT FIXTURE.
- EXISTING LIGHT FIXTURES APPROXIMATE LOCATION SHOWN; CONTRACTOR SHALL FIELD VERIFY EXACT LOCATION PRIOR TO BIDDING.

- CITY POLE NUMBERS THIS SHEET:  
20 FIXTURES THIS SHEET
- ~~#1645~~
  - ~~#08488~~
  - ~~#08489~~
  - ~~#08490~~
  - #08501
  - #08529
  - #08530
  - #08531
  - #08532
  - ~~#08536~~
  - ~~#08537~~
  - ~~#08538~~
  - ~~#08539~~
  - ~~#08540~~
  - ~~#08541~~
  - ~~#08542~~
  - ~~#08543~~ (E) TYPICAL
  - #08546
  - #08548
  - #08549

1 PARTIAL SITE PLAN  
1"=30'-0"



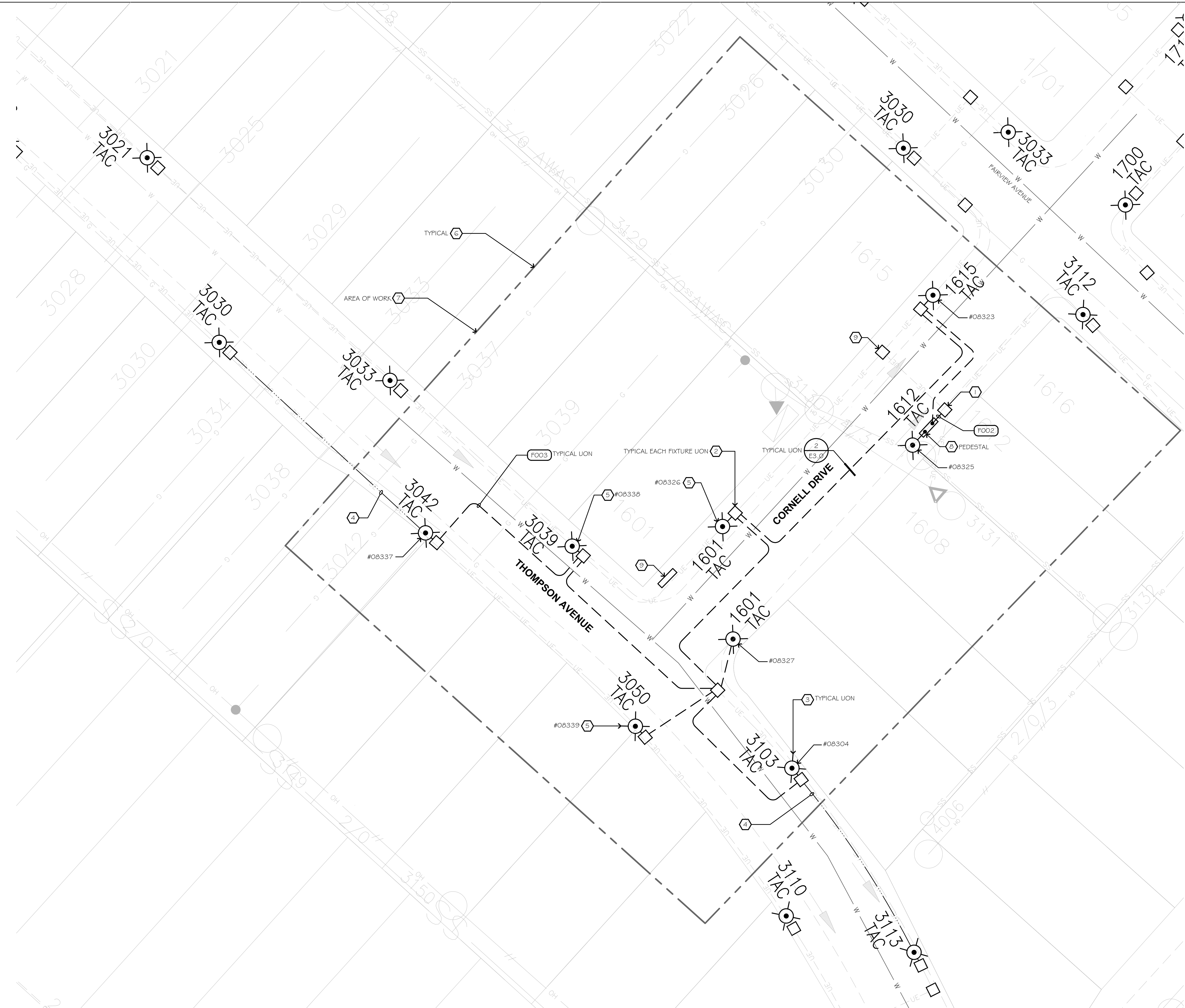
**FEHR ENGINEERING COMPANY, INC.**  
CONSULTING ELECTRICAL ENGINEERS  
FE 108 No. 24047.00  
EMAIL: tpinkerton@fehrengineering.com  
PHONE: (811) 359-3299

DATE	APPR	REVISIONS	NO
02/03/26 <td></td> <td></td> <td></td>			
SCALE: AS SHOWN			
DESIGN: T.P.			
DRAWN: C.L.			
CHECKED: T.P.			

**CITY OF ALAMEDA**  
STREETLIGHT CONDUIT REPLACEMENT - CORNELL DRIVE & THOMPSON AVENUE, MORELAND DRIVE FROM FERNSIDE BOULEVARD TO LINCOLN AVENUE  
**PARTIAL SITE PLAN**

**Schaaf & Wheeler**  
CONSULTING CIVIL ENGINEERS  
2200 RANGE AVENUE, SUITE #201  
SANTA ROSA, CA 95403  
(707) 528-4848

**E2.2**  
5 OF 10



- ### ○ SHEET NOTES
- (E) POWER SOURCE CONCRETE PULLBOX; REPLACE (E) CONCRETE PULLBOX WITH (N) 22" X 12" CONCRETE PULLBOX; SEE DETAIL 1/E3.0 SIMILAR. MAKE PEDESTAL POWER CONNECTION; SEE DETAIL 1/E4.0.
  - EXTEND POWER CIRCUIT INTO FIXTURE (E) PULLBOX & RECONNECT (E) FIXTURE; SEE DETAIL 4/E3.0.
  - FIXTURES SHOWN IN THE AREA OF WORK ARE (E); SEE DETAIL 1/E4.0.
  - DISCONNECT & REMOVE (E) CONDUCTORS TO LAST ACTIVE FIXTURE; SEE GENERAL NOTES.
  - FIXTURE FED FROM OVERHEAD SOURCE; COORDINATE WITH AMP FOR DISCONNECTION & CIRCUIT REMOVAL.
  - APPROXIMATE PATHS OF (E) UNDERGROUND UTILITIES ARE SHOWN IN AREA OF WORK; COORDINATE WITH CITY FOR EXACT LOCATIONS; WHERE UNCERTAIN LOCATIONS EXIST OR AT CITY REQUEST BE PREPARED TO LOCATE UNDERGROUND UTILITIES; SEE PROJECT SPECIFICATION.
  - PROJECT SCOPE OF WORK IS LIMITED TO WITHIN THE BOUNDARY LINES SHOWN.
  - (N) POWER DISTRIBUTION PEDESTAL. SEE DETAIL 2/E4.0; COORDINATE WITH CITY FOR EXACT MOUNTING LOCATION; PEDESTAL IS TO BE LOCATED ADJACENT TO THE EXISTING FIXTURE AND AVOID THE EXISTING WATER METER WHICH IS LOCATED IN THIS AREA.
  - REMOVE (E) BOX; PRIOR TO REMOVAL, COORDINATE WITH CITY TO CONFIRM REMOVAL.

GENERAL SHEET NOTES (APPLICABLE TO WITHIN AREA OF WORK. SEE PLANS FOR AREA OF WORK):

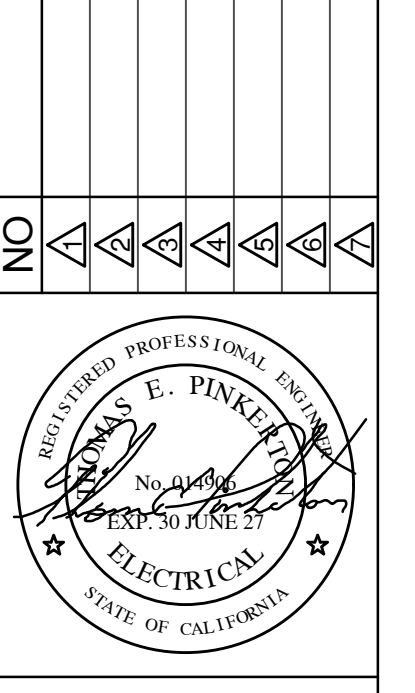
A. IN THE AREA OF WORK REMOVE EXISTING STREET LIGHTING CONCRETE PULL BOXES UNLESS NOTED OTHERWISE; INSTALL NEW PULL BOXES TO REPLACE REMOVED PULL BOXES; SEE DETAIL 1/E3.0; RE-USE EXISTING RACEWAY TO REMAINING LIGHT FIXTURE.

B. EXISTING LIGHT FIXTURES APPROXIMATE LOCATION SHOWN; CONTRACTOR SHALL FIELD VERIFY EXACT LOCATION PRIOR TO BIDDING.

- CITY POLE NUMBERS THIS SHEET:
- △ FIXTURES THIS SHEET
- #08304
  - #08323
  - #08325
  - #08326
  - #08327
  - #08337
  - #08338
  - #08339

DATE	APPR

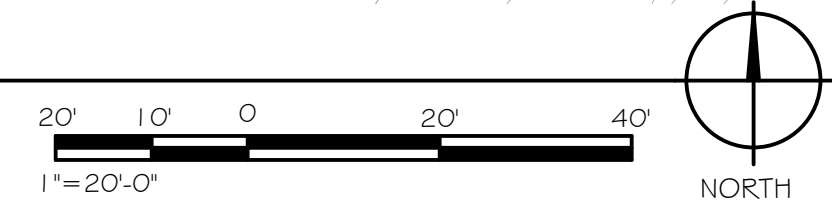
NO	REVISIONS



**Schaaf & Wheeler**  
 CONSULTING CIVIL ENGINEERS  
 2200 RANGE AVENUE, SUITE #201  
 SANTA ROSA, CA 95403  
 (707) 528-4848

**CITY OF ALAMEDA**  
 STREETLIGHT CONDUIT REPLACEMENT - CORNELL DRIVE & THOMPSON AVENUE, MORELAND DRIVE FROM FERNSIDE BOULEVARD TO LINCOLN AVENUE  
**PARTIAL SITE PLAN**

**1 PARTIAL SITE PLAN**  
 1"=20'-0"



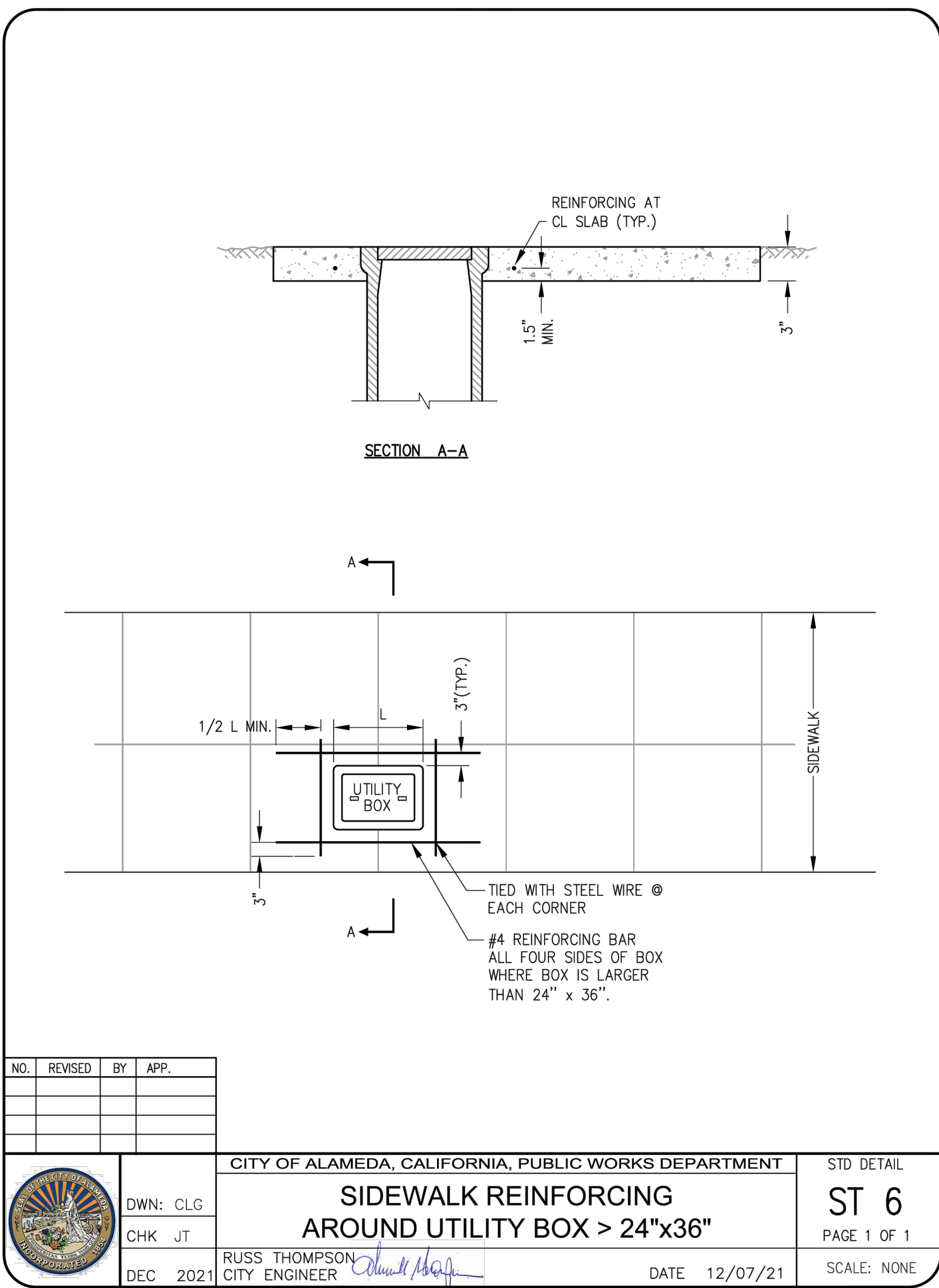
**FEHR ENGINEERING COMPANY, INC.**  
 CONSULTING ELECTRICAL ENGINEERS  
 EMAIL: tpinkerton@fehrengineering.com  
 PHONE: (831) 359-3299  
 FE JOB No. 24047.00

DATE:	02/03/26
SCALE:	AS SHOWN
DESIGN:	T.P.
DRAWN:	C.L.
CHECKED:	T.P.

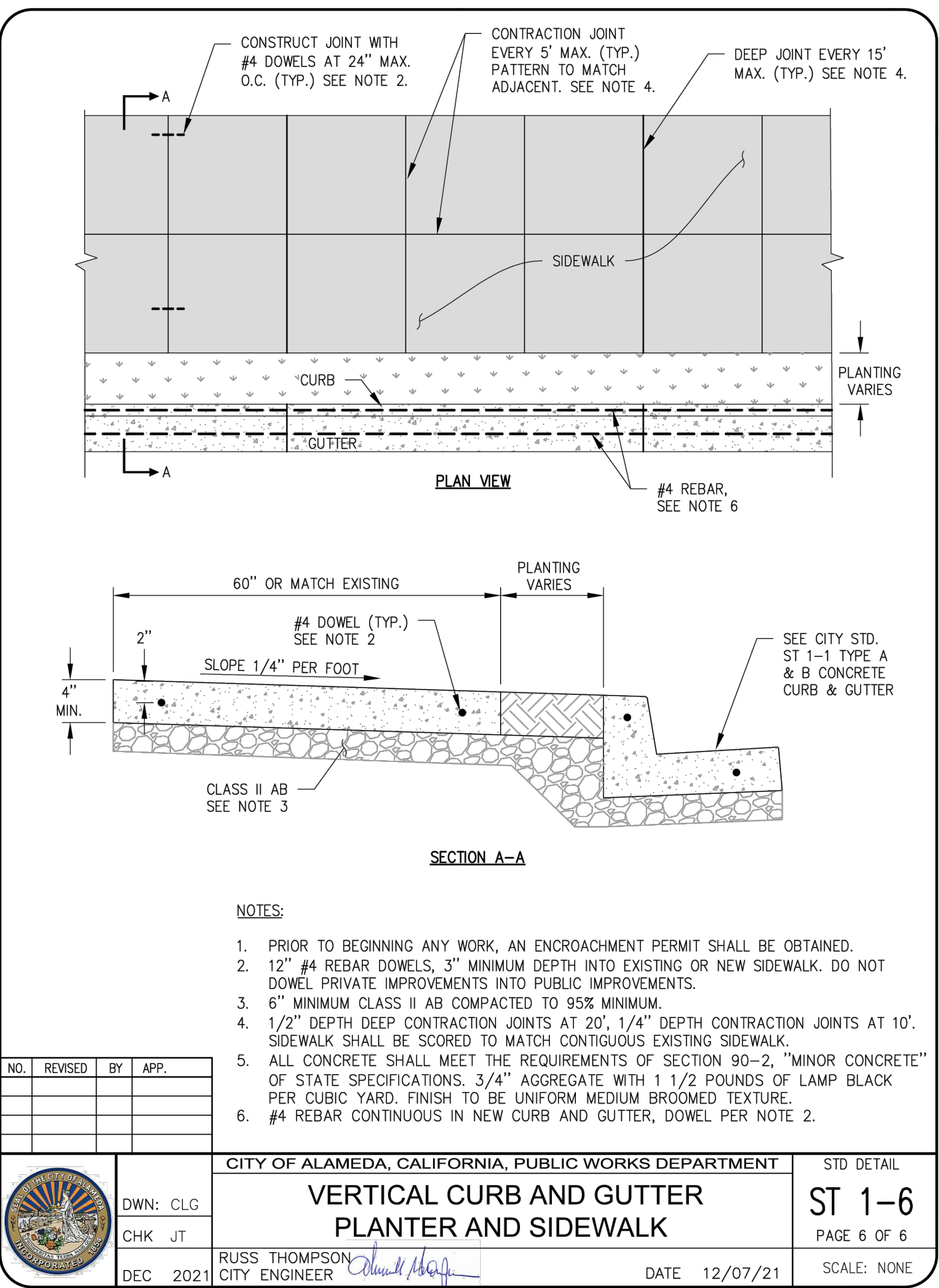




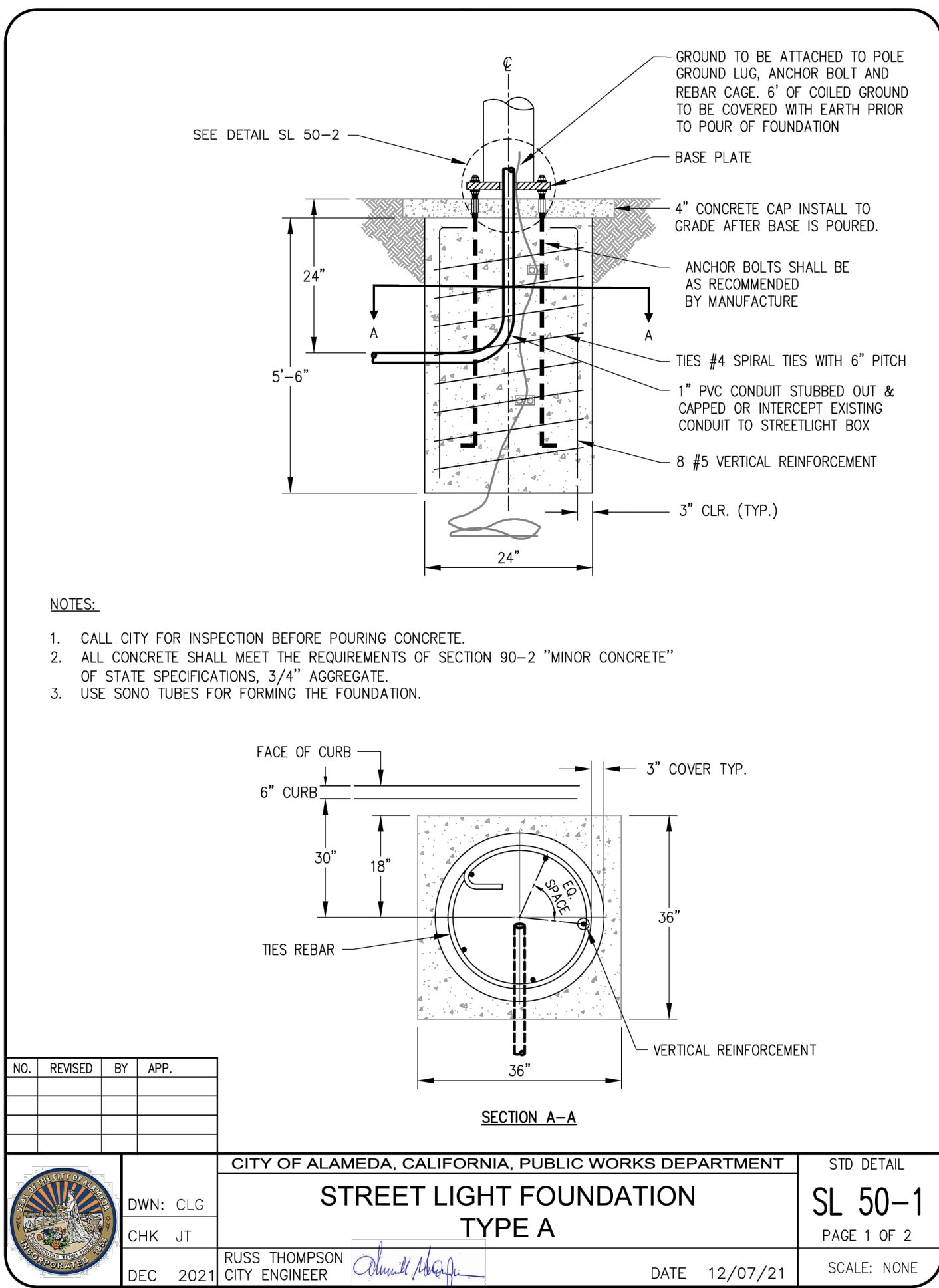
Images: Alameda.png | ST Signature: blue-2.50 INCHES, Pgs: Xref: Profile: F:\0400-510\Alameda\510\0201 STD Update\ST 6.dwg Layout Name: ST 6 Plot Date: Dec 07, 2021 at 13:22



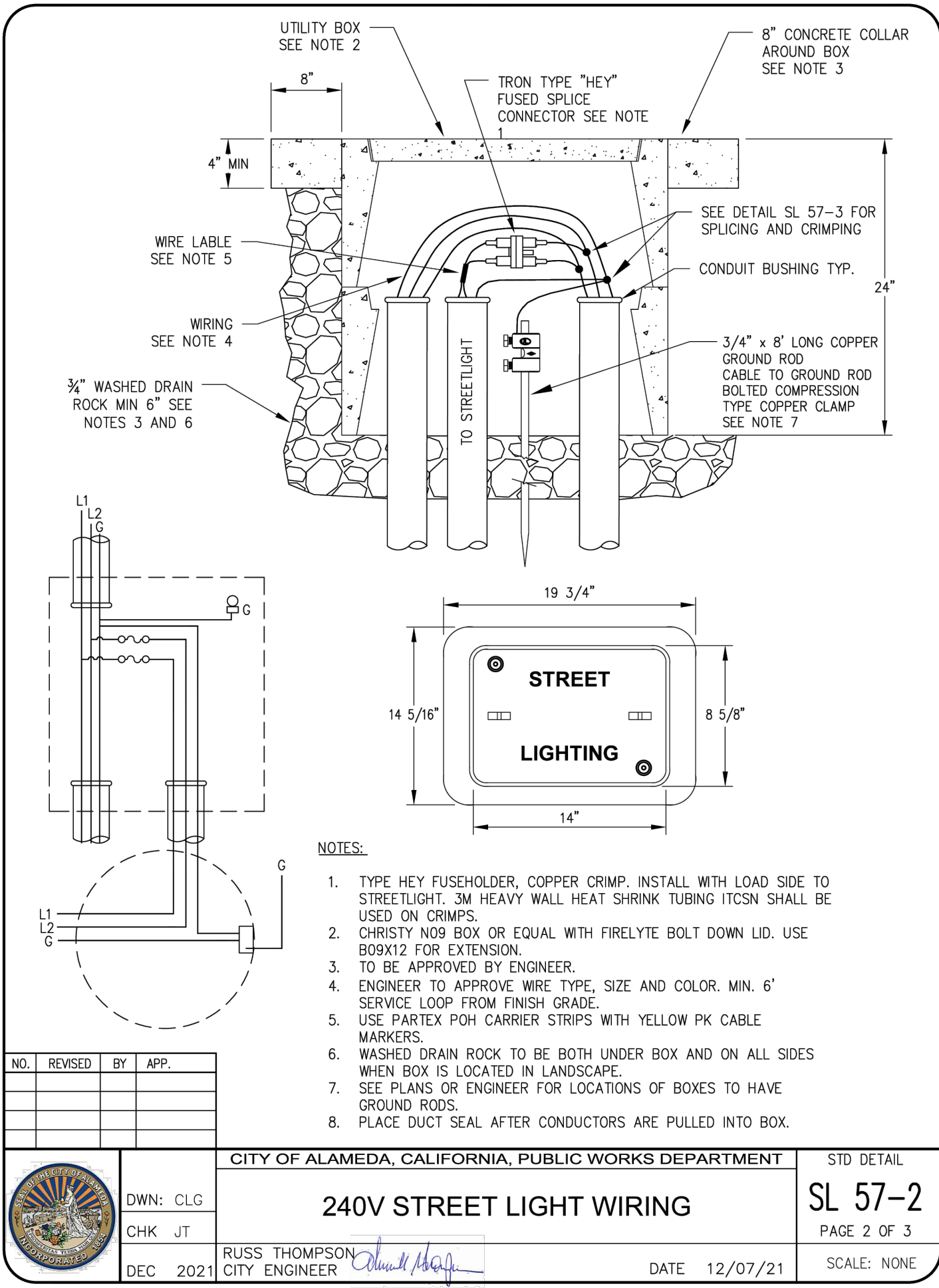
Images: Alameda.png | ST Signature: blue-2.50 INCHES, Pgs: Xref: Profile: F:\0400-510\Alameda\510\0201 STD Update\ST 1-6.dwg Layout Name: ST 1-6 Plot Date: Dec 07, 2021 at 13:19



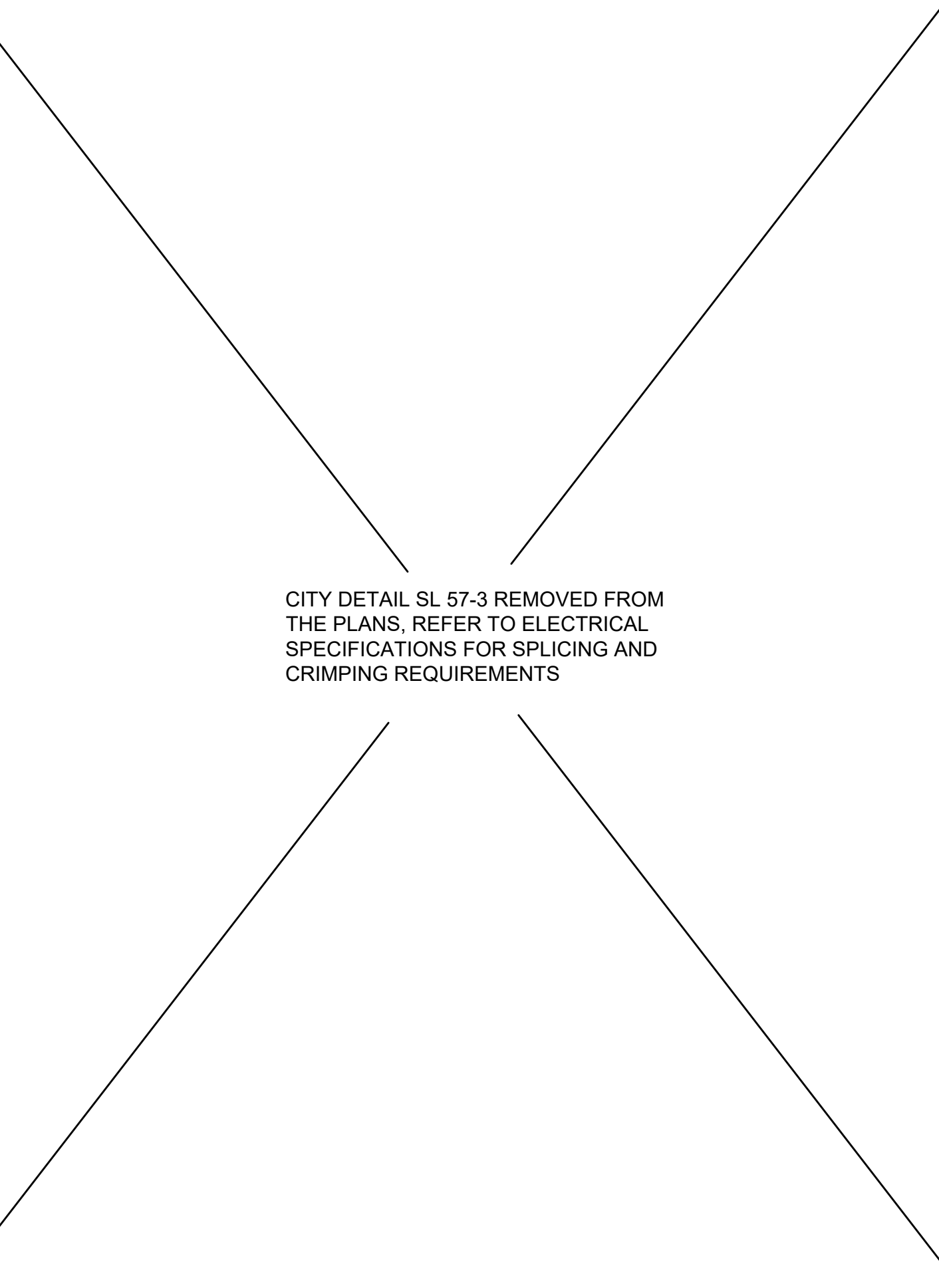
Images: Alameda.png | ST Signature: blue-2.50 INCHES, Pgs: Xref: Profile: F:\0400-510\Alameda\510\0201 STD Update\SL 50-1.dwg Layout Name: SL 50-1 Plot Date: Dec 07, 2021 at 12:43



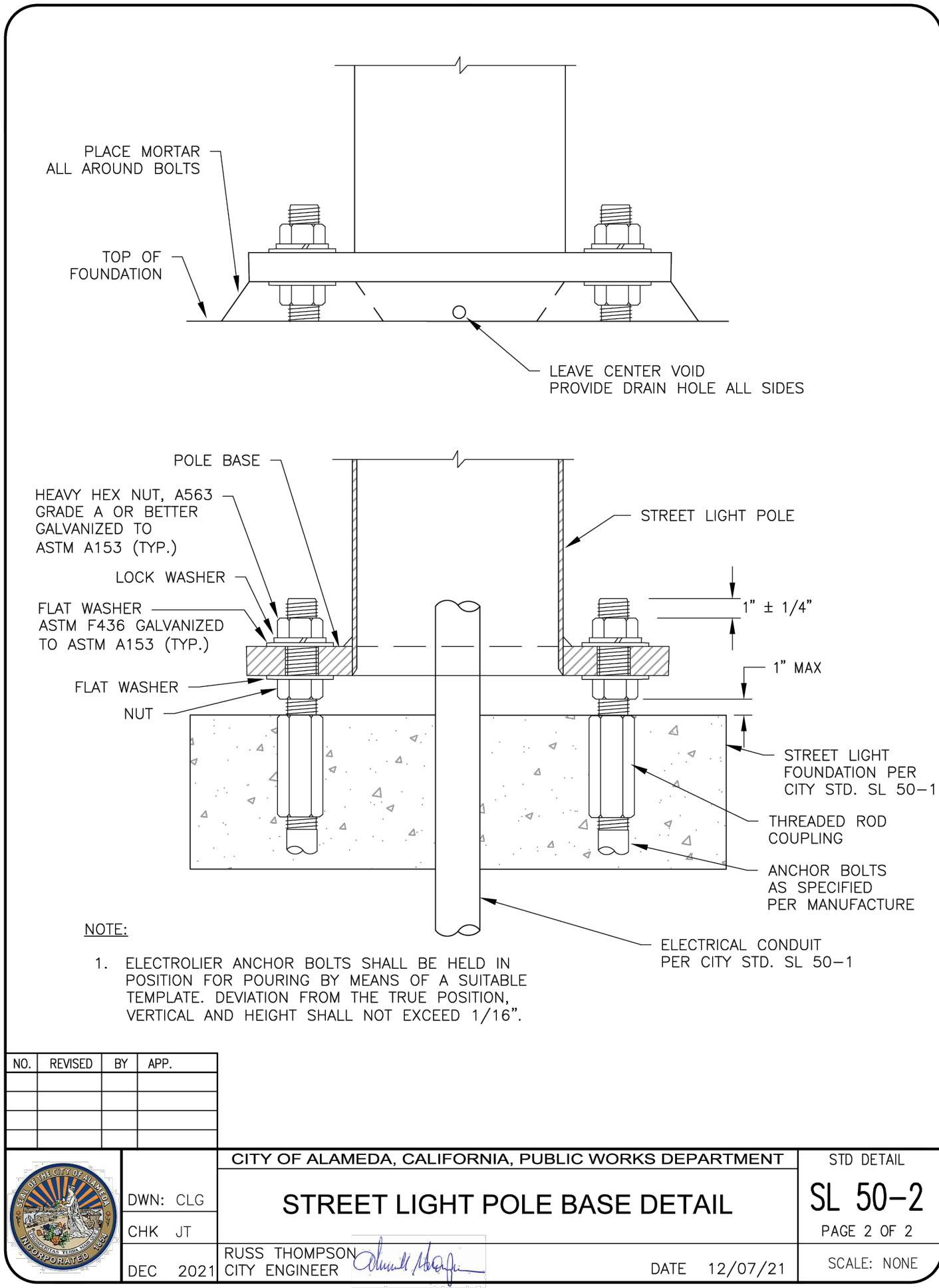
Images: Alameda.png | ST Signature: blue-2.50 INCHES, Pgs: Xref: Profile: F:\0400-510\Alameda\510\0201 STD Update\SL 57-2.dwg Layout Name: SL 57-2 Plot Date: Dec 07, 2021 at 12:50



Images: Alameda.png | ST Signature: blue-2.50 INCHES, Pgs: Xref: Profile: F:\0400-510\Alameda\510\0201 STD Update\SL 50-2.dwg Layout Name: SL 50-2 Plot Date: Dec 07, 2021 at 12:47



Images: Alameda.png | ST Signature: blue-2.50 INCHES, Pgs: Xref: Profile: F:\0400-510\Alameda\510\0201 STD Update\SL 50-2.dwg Layout Name: SL 50-2 Plot Date: Dec 07, 2021 at 12:47



SHEET NOTES

- CONDUIT ENTERING PULLBOX SHALL ENTER AT 45°; SEE DETAILS 1/E3.0 & 4/E3.0.

NO	DATE	APP	REVISIONS

**Schaaf & Wheeler**  
 REGISTERED PROFESSIONAL ENGINEER  
 CONSULTING CIVIL ENGINEERS  
 2200 RANGE AVENUE, SUITE #201  
 SANTA ROSA, CA 95403  
 (707) 528-4848

**CITY OF ALAMEDA**  
 STREETLIGHT CONDUIT REPLACEMENT - CORNELL  
 DRIVE & THOMPSON AVENUE, MORELAND DRIVE FROM  
 FERNSIDE BOULEVARD TO LINCOLN AVENUE  
**ELECTRICAL DETAILS**

DATE:	02/03/26
SCALE:	AS SHOWN
DESIGN:	T.P.
DRAWN:	C.L.
CHECKED:	T.P.

**FEHR ENGINEERING COMPANY, INC.**  
 CONSULTING ELECTRICAL ENGINEERS  
 FE JOB No. 24047.00  
 EMAIL: tpinkerton@fehrengineering.com  
 PHONE: (811) 359-3299

