

# *Receive an Update on Construction Impacts from the Oakland Alameda Access Project (OAAP)*

City Council  
October 1, 2024  
ITEM INSERT#7-C



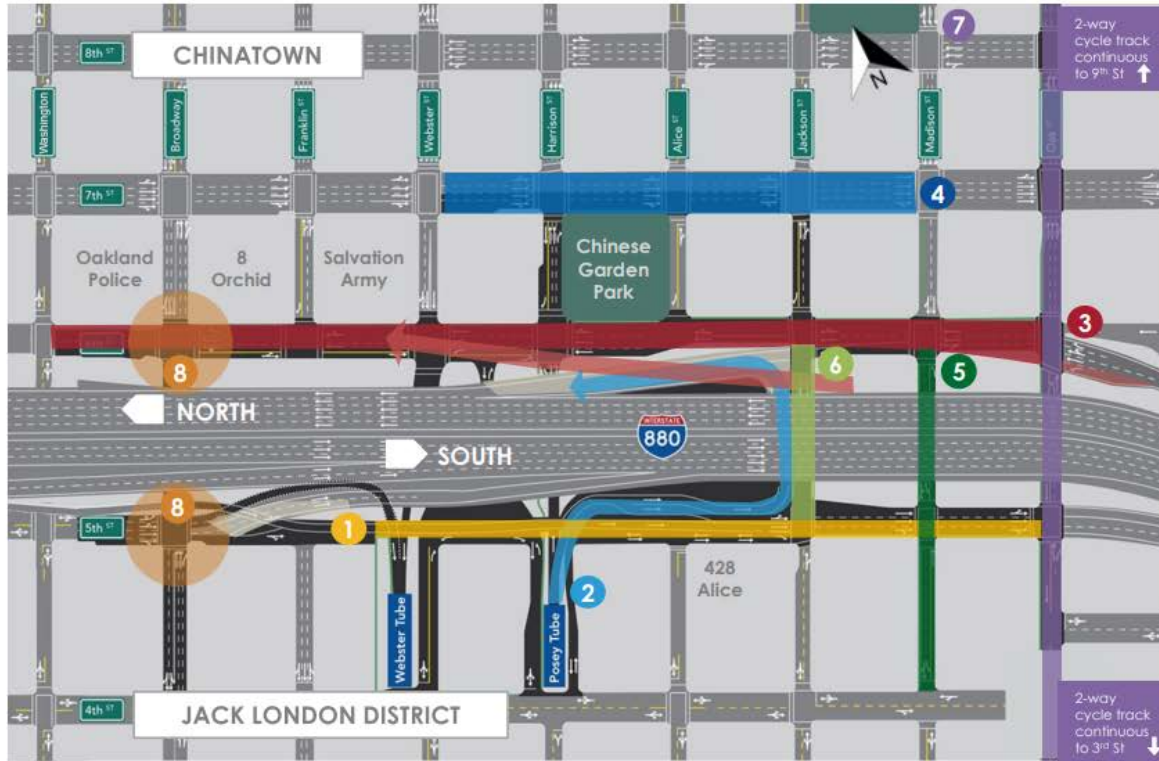
# Oakland Alameda Access Project

- Led by Alameda CTC
- \$152M regional project
- Improve access to I-880 & I-980
- Improve safety and reduce traffic in Oakland Chinatown
- 20+ years planning
- City Council voted to support in 2020 based on EIR
- Construction beginning mid-2025, completed 2028



Image source: Alameda CTC, February 2024

# Major Roadway Improvements

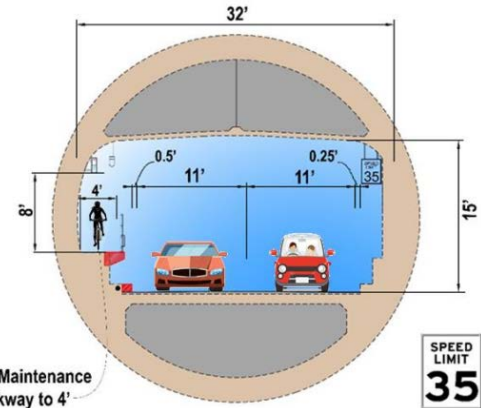
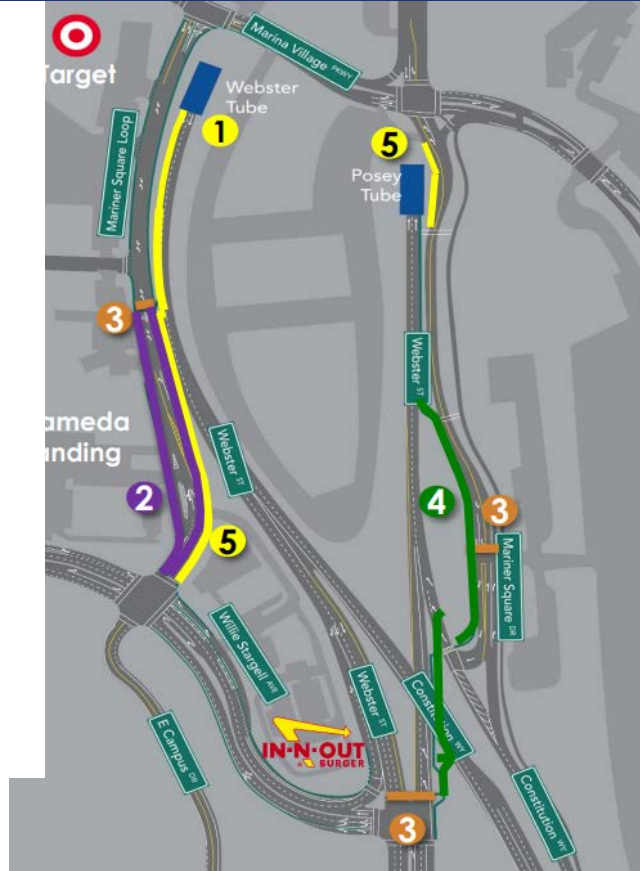


- 1** **Realign** WB I-980 Jackson St off-ramp and reconstruct 5<sup>th</sup> St
- 2** **Construct** right-turn from Posey Tube onto Horseshoe to NB Jackson St on-ramp
- 3** **Widen** NB I-880 Oak off-ramp, **remove** NB I-880 Broadway off-ramp, **reconstruct** 6<sup>th</sup> St for multi-modal access (Oak St to Washington St)
- 4** **Restripe** 7<sup>th</sup> St and improve intersections
- 5** **Restripe** Madison for 2-way travel between 4<sup>th</sup> to 6<sup>th</sup> St
- 6** **Restripe** Jackson for 1-way between 5<sup>th</sup> to 6<sup>th</sup>
- 7** **Restripe** Oak St for multimodal access (2-way cycle track from 3<sup>rd</sup> to 9<sup>th</sup> St)
- 8** **Reconfigure** intersections at Broadway and 6<sup>th</sup> and 5<sup>th</sup> St

Source: Alameda CTC, February 2024

# Alameda Bike/Ped Improvements

- 1** Widen and open **walkway** through Webster Tube and along Webster Street connecting to Mariner Square Loop (0.8 miles)
- 2** New **Class II** bike lane on Mariner Square Loop (0.3 miles)
- 3** Add crosswalks to connect ped/bike paths
- 4** **New Class I path:** Realign and widen path to 8 feet (0.3 miles)
- 5** **Sidewalk extension** on Mariner Square Loop and Mariner Square Drive (0.3 miles)



Widen Maintenance Walkway to 4' Open to Public

Webster Tube Cross-Section

Section D - Looking North Towards Oakland

# ACTC PS&E: Expected Construction Impacts

## Continuous Single-Lane Tube Closures

- Posey Tube: two-year continuous single lane closure
- Webster Tube: 8-month continuous single lane closure
- *The two closures overlap by 5 months.*

## Intermittent Full Tube Closures

- Posey: 23 nighttime closures and 8 full weekend closures spread over two years
- Webster Tube: 10 nighttime closures over six months (no full weekends)



# City Concerns re Long-Term Single-Lane Closures

## Severe impacts on Alameda community:

- **Bus riders.** Longer waits and much longer rides on all lines serving Alameda.
- **Drivers.** Major peak hour congestion at all Alameda gateways.
- **Business community.** 380+ businesses in West Alameda who rely on visitors and employees from outside Alameda.

*Alameda seniors catching the 51A from Mastick Senior Center*



# City Actions to Address Concerns

## City approach:

1. Proposing solutions to minimize daytime Tube lane closures
2. Informing and engaging community stakeholders

## *City actions spring/summer 2024 :*

- *Multiple meetings with ACTC, Caltrans, AC Transit, OakDOT*
- *Transportation Commission, City-AC Transit ILC*
- *Inform & engage community stakeholders*
- *Letter to Caltrans supporting project with conditions of approval*
- *ACTC meetings: Programs & Projects Committee (PPC), full Commission*



# 1. Seeking Solutions to Minimize Tube Closures

- Developed construction strategies:
  - Posey Tube – Reduce lane closures
  - Webster Tube – Eliminate daytime single-lane closures and construct with full Tube closures at night (*requires extended hours*)
- Submitted comments & markups on PS&E, offering alternatives
- Exploring ways to incentivize shorter closures through procurement process
- Brought construction and contracting concepts to workshops with ACTC and Caltrans engineers

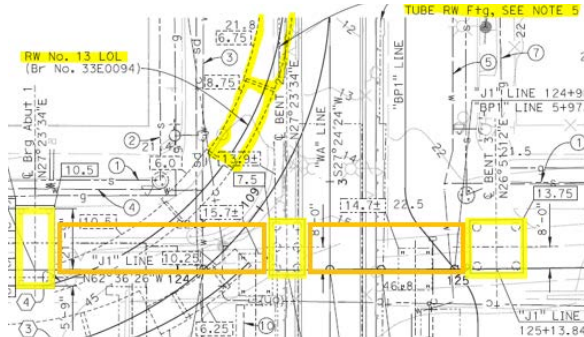




# City Proposal Highlights

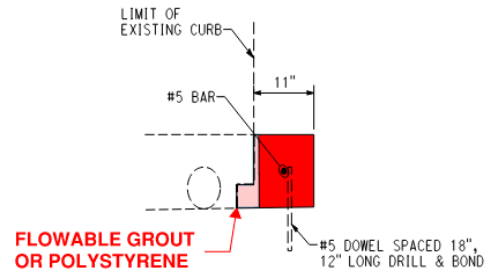
## Posey Tube

- **Constraint:** Construction of large column and retaining wall requires lane closure.
- **Proposal:** Construct more components simultaneously to reduce months needed for lane closures.



## Webster Tube

- **Constraint:** Need protection for workers during construction.
- **Proposal:** Construct with full closures at nighttime, and place precast curbs so both lanes can open safely during the day.



MINOR CONCRETE (CURB) DETAIL



## 2. Engaging Community Stakeholders

- Met with business, nonprofit, and community leaders
- Shared project benefits as well as anticipated closures
- Will continue to advocate for early community engagement and greater transparency throughout the project



# Sept 26 Alameda CTC Motion

## **Approve actions to continue OAAP and direct staff to:**

- Analyze opportunities to reduce construction-related impacts on travel through the Webster and Posey tubes
- Work to minimize impacts to transit operators
- Continue engaging in stakeholder workgroups, in particular with the City of Alameda, and effectuate close communication
- Return to the Commission no later than the December 5, 2024, regular Commission meeting with an update



# Next Steps

## ***Immediate / Fall 2024:***

- Continue to work with ACTC and Caltrans on construction solutions
- Review OAAP communications plan (prepared by Caltrans)
- Continue engaging community stakeholders
- November ACTC PPC meeting

## ***December 2024:***

- ACTC takes bid-ready project documents to California Transportation Commission  
*(deadline for \$70MM funding)*
- ACTC reports to full Commission



# Staff Recommendation

*Receive an update on construction impacts from the Oakland Alameda Access Project*

