

Source: International Parking Design

Parking Enforcement

Every Space Matters, Every Person Counts

Commission on Persons with Disabilities
May 13, 2026



Tonight's Topics

01

Program Background

How Alameda's parking enforcement program came to be

02

Why ADA Enforcement Matters

Safety, access, and the impact of violations

03

Enforcement Data (FY 2022–2026)

Tickets issued, trends, and hotspot locations

04

Fine Schedule & Comparisons

Where Alameda stands among peer agencies

05

Looking Ahead

Expanding coverage and proposed fee increases

Commission on Persons with Disabilities
May 13, 2026

The screenshot shows a news article from the East Bay Times. The headline is "Around the Island: Alameda starts new parking enforcement program". Below the headline is a sub-headline: "Also, July Fourth parade to return this summer after cancellations the last two years". The article features a photograph of a man, Calvin Wong, standing next to a white car with a blue parking sign on the side. The sign has a white 'P' and a blue triangle with a white 'A' and a blue circle with a white 'P'. The article is by Sarah Henry, published on May 25, 2022, at 5:00 AM PDT. The article text mentions that Alameda parking enforcement activities have shifted to the city's Public Works Department and that there is an increase in the presence of parking technicians, such as Calvin Wong.

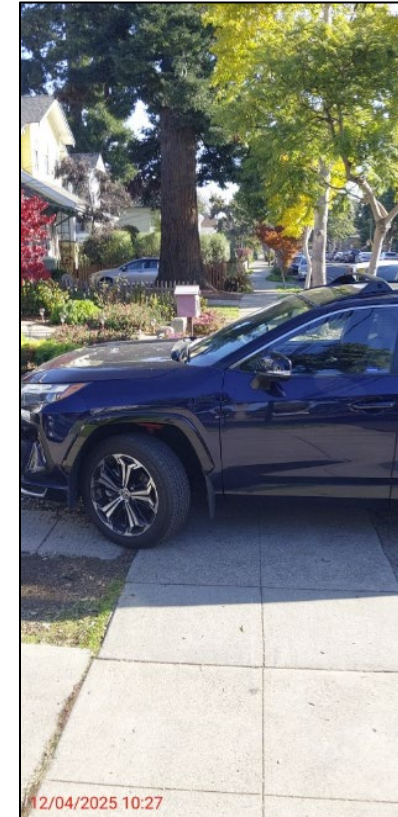
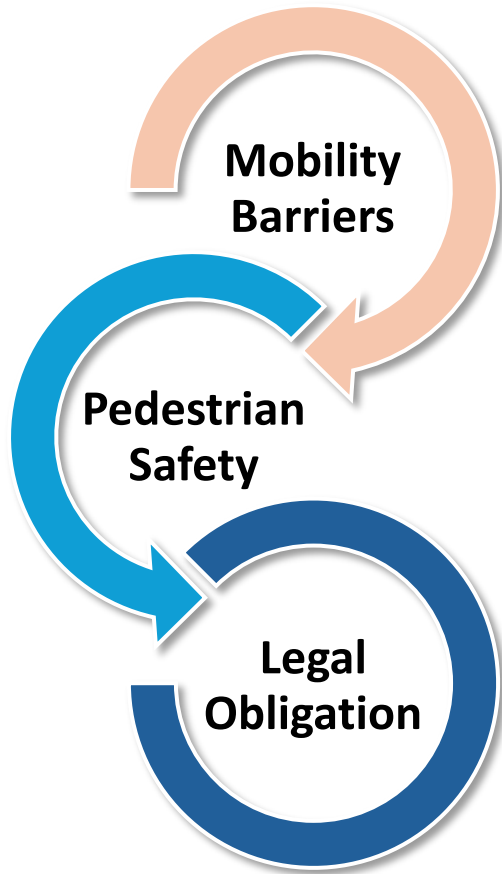


Program Background

- 2019–2020** ○ City Council approved two new Parking Technician positions and ALPR policy; AMC amendments improved parking management.
- 2020–2021** ○ COVID delayed hiring; meter revenue fell 92%.
- Nov 2021** ● City Council approved reorganization: enforcement moved from Police Dept to Public Works; Parking Fund created.
- Feb 2022** ● Ordinance introduced authorizing Public Works staff to enforce parking violations citywide.
- May 2022** ● **Program officially launched:** New PW vehicles deployed, new parking logo, Parking Technicians on board.
- 2022–Now** ● Active enforcement city-wide; ADA violations one of many types of violations growing focus.



Why ADA Enforcement Matters



When people with disabilities are forced into traffic, it is not just a parking issue. It is an access and equity issue.



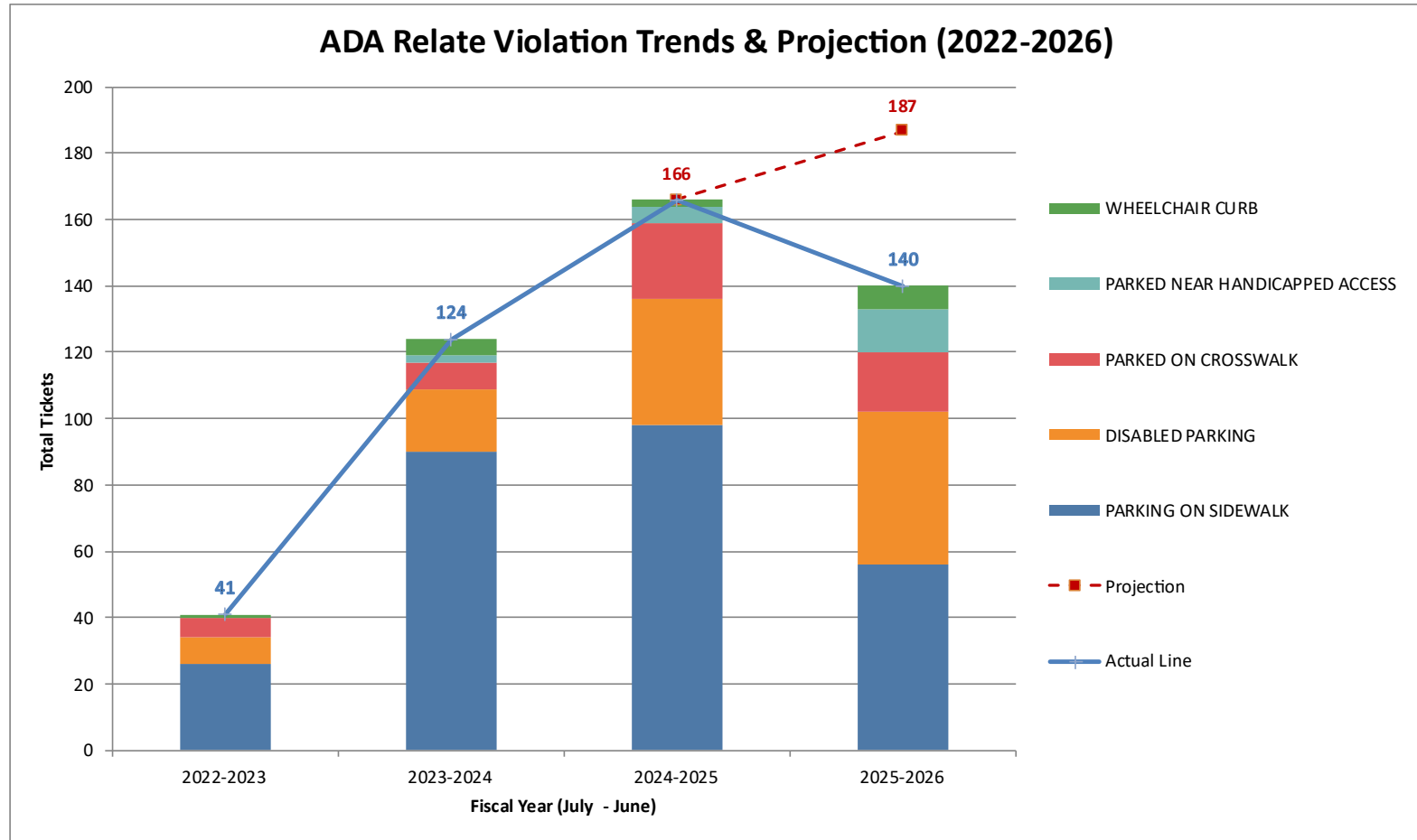
Enforcement Data: Program Totals (FY 2022-2026)

5

Violation Categories

471

ADA Citations Issued

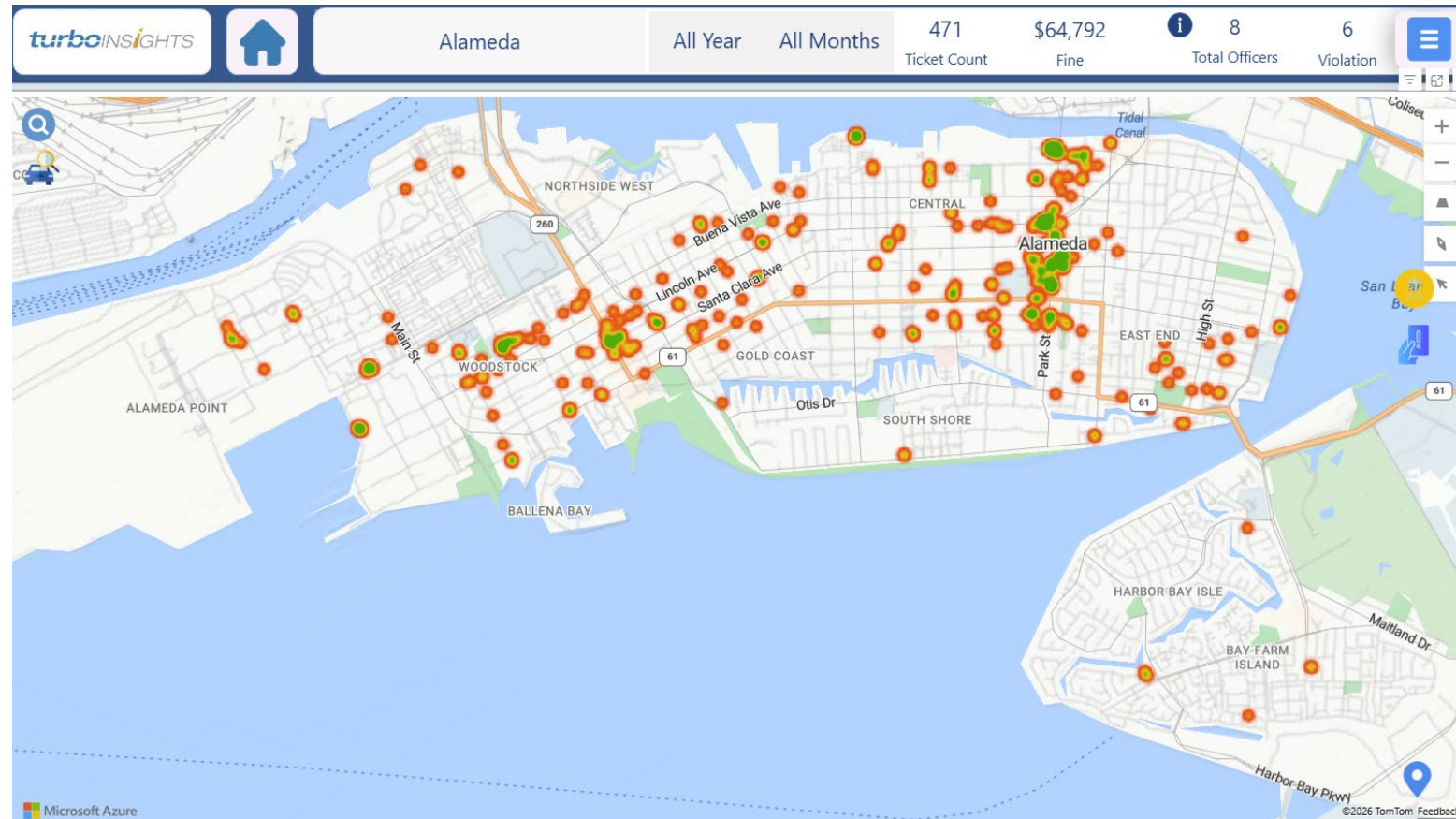


Year-by-Year ADA Enforcement Summary

Fiscal Year	Sidewalk	Disabled Parking	Crosswalk	Handicap Access	Wheelchair Curb	Total Tickets	Total Fines
FY 2022–23	26	8	6	0	1	41	\$4,645
FY 2023–24	90	19	8	2	5	124	\$12,375
FY 2024–25	98	38	23	5	2	166	\$22,280
FY 2025–26	56	46	18	13	7	140	\$25,492
TOTAL	296	111	55	20	15	471	\$64,792



ADA Violation Hot Spots: All Years Combined (FY 2022-2026)



Map Key

- Green ● High frequency hot spot
- Orange ● Moderate frequency
- Red ● Lower frequency

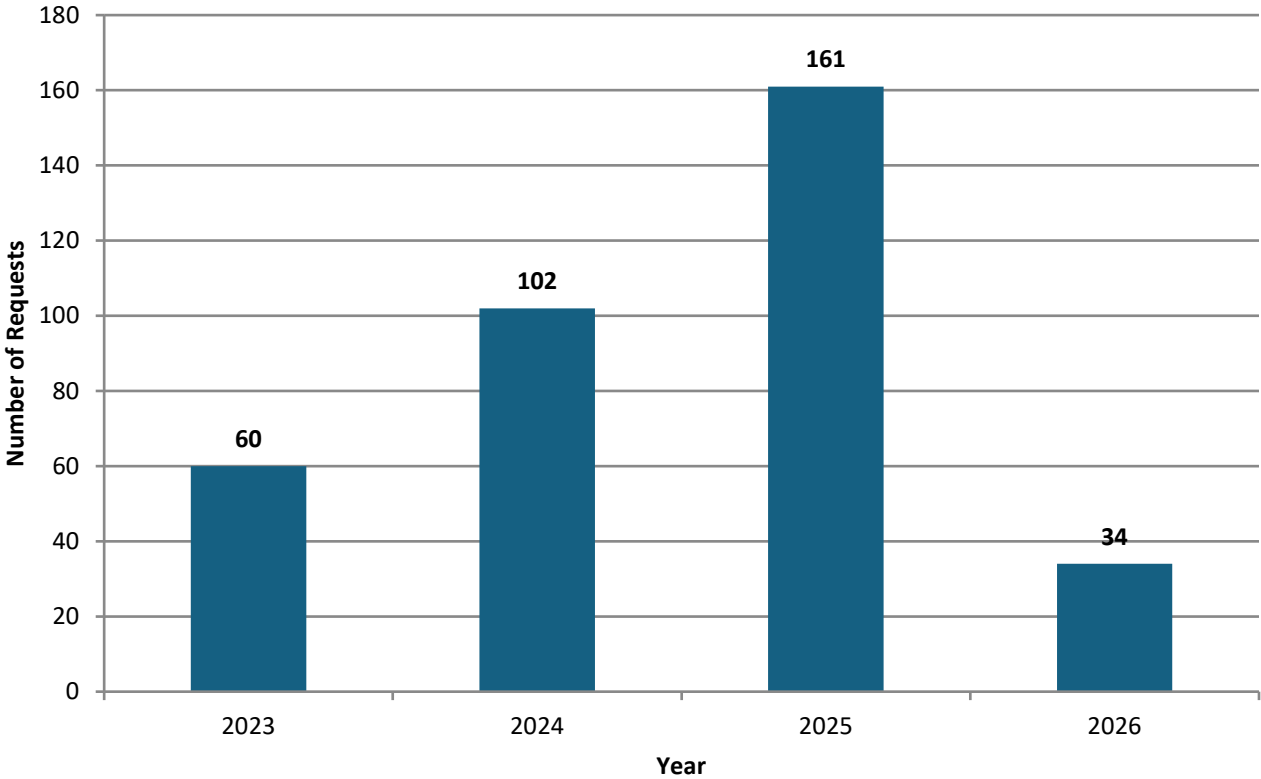
Key Corridors

- Park Street
- Webster Street
- Santa Clara Ave
- Lincoln Ave



Community-Reported ADA Concerns: SeeClickFix

Annual ADA-Related Service Requests



2.7x

Increase in Reports
2023 → 2025

357

Total Reports
2023 → 2026 (to date)

■ ADA Access Reports



Alameda
SeeClickFix



What Enforcement Looks Like on the Ground



Commission on Persons with Disabilities
May 13, 2026



What Enforcement Looks Like on the Ground



\$82

22500 (F) CVC Parking on Sidewalk



\$385

22500 (B) CVC Parked on Crosswalk
22522 CVC Parked Near Handicap Access



What Enforcement Looks Like on the Ground



\$231

22500 (I) CVC Wheel Chair Curb

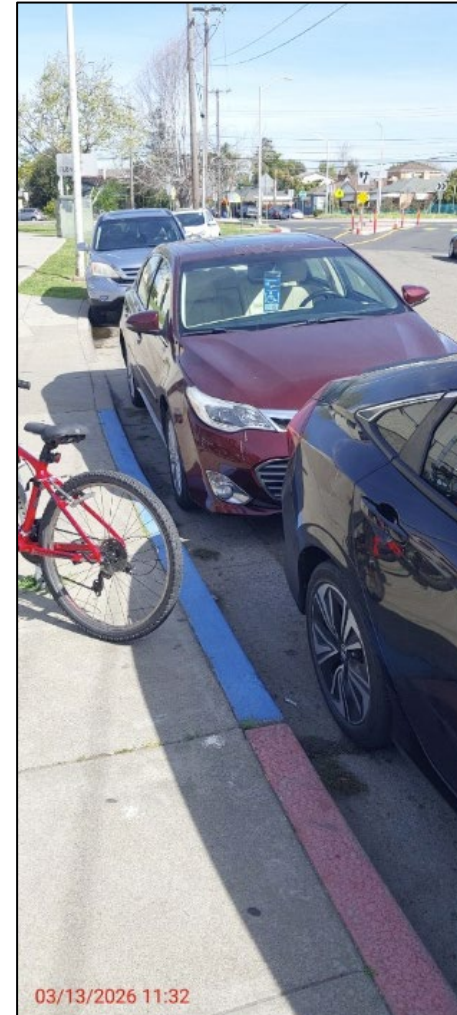
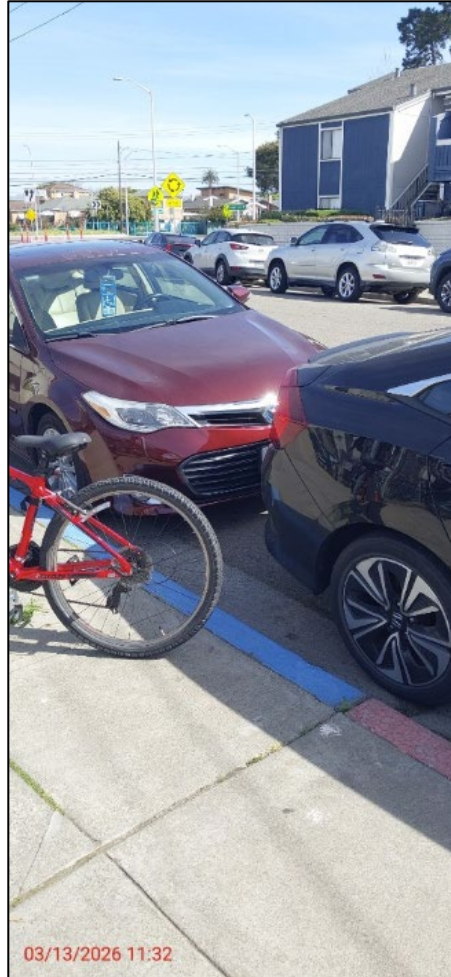
Commission on Persons with Disabilities
May 13, 2026



Location: 1300 Third Street



What Enforcement Looks Like on the Ground



Disabled Parking
Parking Prohibited All Times



Commission on Persons with Disabilities
May 13, 2026



What Enforcement Looks Like on the Ground

22500 (B) CVC Parked on Crosswalk

22500 (L) CVC Wheel Chair Curb

8-7.1 AMC Parking Prohibited All Times

\$375



What Enforcement Looks Like on the Ground

Code	Violation	Current Fine	Late Penalty	Status	Proposed FY27 Amount (Increased by 2.5%)
22507.8(A) CVC	Disabled Parking	\$353	\$53	★ Highest ADA	\$362
22522 CVC	Parked Near Handicapped Access	\$316	\$31	★ High	\$324
22500(L) CVC	Wheelchair Curb	\$237	\$31	High	\$243
22500(F) CVC	Parking on Sidewalk	\$84	\$31	Moderate	\$86
22500(B) CVC	Parked on Crosswalk	\$79	\$31	Moderate	\$81
→ 22507.8 CVC(c)(2)	Disabled Space – Cross Hatch	\$353	\$53	Anticipate: High	Not Applicable ←

Alameda's fines for ADA-related violations are among the highest in the East Bay region.

Looking Ahead

1

Expanded Patrol Coverage

Goal: No street overlooked. We are increasing targeted sweeps of identified hot spots.

2

Proposed Fine Increases

Goal: Strengthening deterrence through increased fines.

3

Community Education

Goal: Raise awareness about why accessible routes must remain clear at all times.

4

Optimized Data-Driven Enforcement

Goal: Utilize heat map data to focus resources where the need is greatest.



Thank You

Ricardo De La Torre | Parking Manager, Public Works Department
rdelatorre@alamedaca.gov

Website: alamedaca.gov/parking

Email: parking@alamedaca.gov

Parking Hotline: (510) 522-PARK (7275)

"Our mission is to ensure every Alameda street is welcoming and accessible for every single person."

