



## Advisory Board

Denyse Trepanier  
*Board Chair*

Brian Fowler  
*Treasurer*

Tim Beloney  
*Secretary*

Maria Piper  
*Board Member*

Cyndy Johnsen  
*Board Member*

Mitch Ball  
*Board Member*

Lucy Gigli  
*Founder, non-voting*

Bike Walk Alameda is fiscally sponsored by Bike East Bay, a 501(c)(3) nonprofit organization.

[bikewalkalameda.org](http://bikewalkalameda.org)

May 5, 2026

### [RE: Item 7-D: Encinal Terminals Lease Amendment](#)

Dear Mayor Ezzy Ashcraft, Members of the Council, and Staff,

We ask that you condition approval of the ordinance on Bayview Landing, L.P. and staff working together to develop a clear, effective solution for Bay Trail pedestrian access through the area.

The Planning Board approved this permit in March, with direction to improve pedestrian access. However, the discussion suggested fixes that would not adequately address the underlying problems, so we appreciate the opportunity to revisit it here.

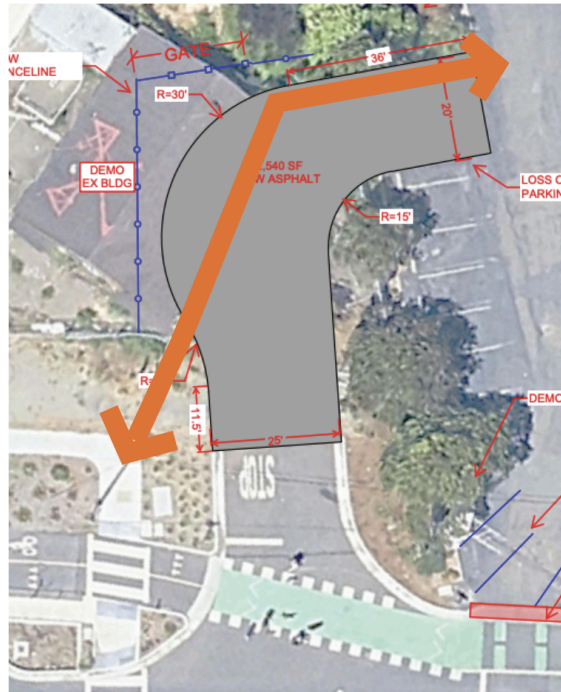
As originally proposed, the project would rebuild a curb along the Fortman driveway and add two parking stalls:



This driveway is currently used by Bay Trail pedestrians to access the waterfront. While the Planning Board suggested building a rolled curb to maintain access, parked cars would still obstruct the path, making this a less-than-ideal solution. It also does not resolve the existing conflicts between pedestrians and bicyclists who are forced to share the Cross Alameda Trail here.

A more effective approach would be to connect the existing sidewalk directly to the new driveway and create a dedicated pedestrian route that makes getting to and from the waterfront more direct. Even a simple crosswalk with clear markings—or a short, delineated section using striping or temporary barriers—could guide pedestrians safely through this stretch.

This would provide a better connection for Bay Trail users while helping to separate pedestrian and bicycle movements at this busy junction.



This is one potential solution, and there may be others worth considering. The key goal is to ensure that whatever approach is adopted meaningfully improves safety and usability for all users through this area.

Thank you for your consideration.

Bike Walk Alameda Board