

This plan document set is the sole property of Lloyd Consulting Group, LLC. No alterations to these plans, other than adding "as-built" information, are allowed by anyone other than authorized Lloyd Consulting Group, LLC employees.  
 Z:\Shared\Projects\26-154 roots training to veneer\construction documents\26-154 - Existing Conditions Plan.dwg, 01/10/2025 3:17 PM



**DEMOLITION KEYNOTES**

- 1 EXISTING FENCE ON PLAN WEST SIDE OF THE PLAYING FIELD TO BE REMOVED AS NECESSARY TO ACCOMMODATE THE NEW BLEACHER SECTION. THE FENCE MAY BE USED ELSEWHERE ON SITE FOR NEW FENCING, IF SALVAGEABLE.
- 2 EXISTING TRAINING POOL WILL BE REMOVED AND PAVED OVER FOR NEW FAN ACTIVATION AREA.
- 3 PROTECT IN PLACE GATE. REFER TO GATE SCHEDULE.

**DEMOLITION LEGEND**

- PROPERTY LINE/ RIGHT-OF-WAY
- LIMIT OF CONSTRUCTION
- POTENTIAL CONDUIT TRENCHING
- KEYNOTE CALLOUT SYMBOL WITH DIRECTION ARROWS INDICATING LIMITS OF LINEAR ELEMENTS

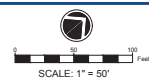
**GATE SCHEDULE**

KEY	MATERIAL	WIDTH	HEIGHT
G01	CHAIN LINK	23'-0"	6'-0"
G02	CHAIN LINK	22'-0"	6'-0"
G03	CHAIN LINK	15'-0"	6'-0"
G04	CHAIN LINK	15'-0"	6'-0"
G05	CHAIN LINK	24'-0"	6'-0"
G06	CHAIN LINK	23'-0"	6'-0"
G07	CHAIN LINK	19'-0"	6'-0"

This plan document set is the sole property of Lloyd Consulting Group, LLC. No alterations to these plans, other than adding "as-built" information, are allowed by anyone other than authorized Lloyd Consulting Group, LLC employees.  
 Z:\Shared\Project\26-154 roots training to venue\construction documents\26-154 - Demolition Plan.dwg 6/10/2026 3:17 PM



**EX-02 DEMOLITION PLAN**  
**OAKLAND ROOTS & SOUL SC TRAINING CENTER IMPROVEMENTS**



DATE: June 8, 2026  
 PREPARED BY: ZACH PLUM, PE (630) 742-0011



**SURFACE TAKEOFFS**

SURFACE TAKEOFFS ARE PROVIDED FOR RELEVANT PROJECT AREAS WITHIN THE SITE. LANDSCAPE AND HARDSCAPE AROUND THE BUILDINGS WILL NOT BE AFFECTED BY THIS SCOPE OF WORK.

IMPERVIOUS ASPHALT PAVING TO REMAIN:	130,000 SF (2.98 AC)
NATURAL GRASS ON SAND ROOTZONE TO REMAIN:	168,000 SF (3.86 AC)
NATURAL GRASS ON NATIVE SOIL TO REMAIN:	115,000 SF (2.64 AC)
THERAPY POOL TO REMOVED AND PAVED OVER:	1,125 SF
EXISTING BUILDINGS TO REMAIN:	71,580 SF
EXISTING SYNTHETIC TURF TO REMAIN:	15,000 SF

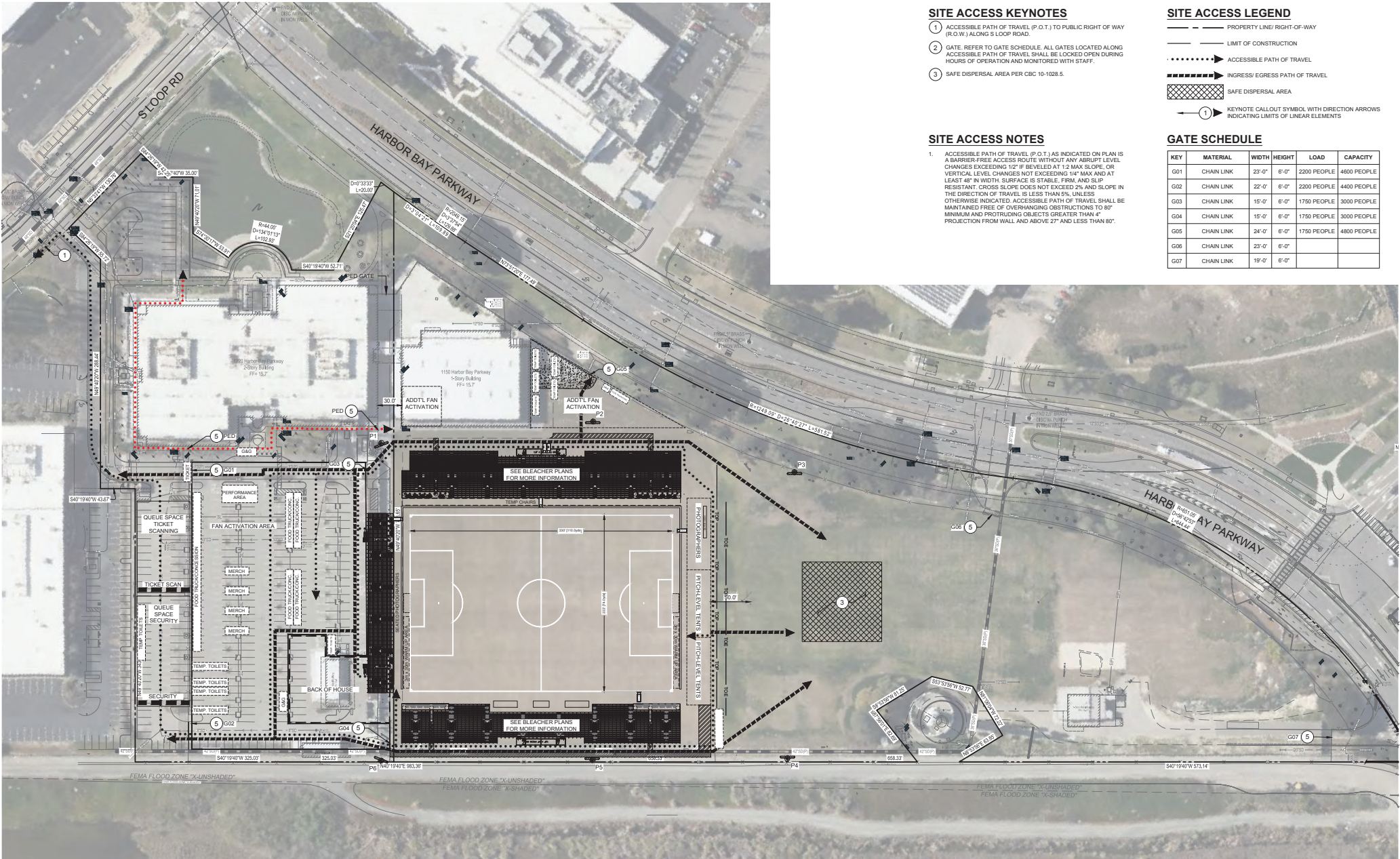
NEW IMPERVIOUS SURFACES: NONE

**SITE LEGEND**

- PROPERTY LINE/ RIGHT-OF-WAY
- LIMIT OF CONSTRUCTION
- SYNTHETIC TURF
- TEMPORARY ADA SURFACING
- CONCRETE PAVEMENT
- (E TO REMAIN) NATURAL GRASS PLAYING FIELD
- TEMPORARY POP-UP ELEMENTS
- KEYNOTE CALLOUT SYMBOL WITH DIRECTION ARROWS INDICATING LIMITS OF LINEAR ELEMENTS

This plan document set is the sole property of Lloyd Consulting Group, LLC. No alterations to these plans, other than adding "as-built" information, are allowed by anyone other than authorized Lloyd Consulting Group, LLC employees.  
 2: Shared Project 25-154 roots training to view construction documents 25-154 - Site Plan.dwg 6/10/2025 3:18 PM

**SP-01 SITE PLAN**  
**OAKLAND ROOTS & SOUL SC TRAINING CENTER IMPROVEMENTS**



**SITE ACCESS KEYNOTES**

- ① ACCESSIBLE PATH OF TRAVEL (P.O.T.) TO PUBLIC RIGHT OF WAY (R.O.W.) ALONG S LOOP ROAD.
- ② GATE. REFER TO GATE SCHEDULE. ALL GATES LOCATED ALONG ACCESSIBLE PATH OF TRAVEL SHALL BE LOCKED OPEN DURING HOURS OF OPERATION AND MONITORED WITH STAFF.
- ③ SAFE DISPERSAL AREA PER CBC 10-1028.5.

**SITE ACCESS NOTES**

1. ACCESSIBLE PATH OF TRAVEL (P.O.T.) AS INDICATED ON PLAN IS A BARRIER-FREE ACCESS ROUTE WITHOUT ANY ABRUPT LEVEL CHANGES EXCEEDING 1/2" IF BEVELED AT 1:2 MAX SLOPE, OR VERTICAL LEVEL CHANGES NOT EXCEEDING 1/4" MAX AND AT LEAST 48" IN WIDTH. SURFACE IS STABLE, FIRM, AND SLIP RESISTANT. CROSS SLOPE DOES NOT EXCEED 2% AND SLOPE IN THE DIRECTION OF TRAVEL IS LESS THAN 5%, UNLESS OTHERWISE INDICATED. ACCESSIBLE PATH OF TRAVEL SHALL BE MAINTAINED FREE OF OVERHANGING OBSTRUCTIONS TO 80" MINIMUM AND PROTRUDING OBJECTS GREATER THAN 4" PROJECTION FROM WALL AND ABOVE 27" AND LESS THAN 80".

**SITE ACCESS LEGEND**

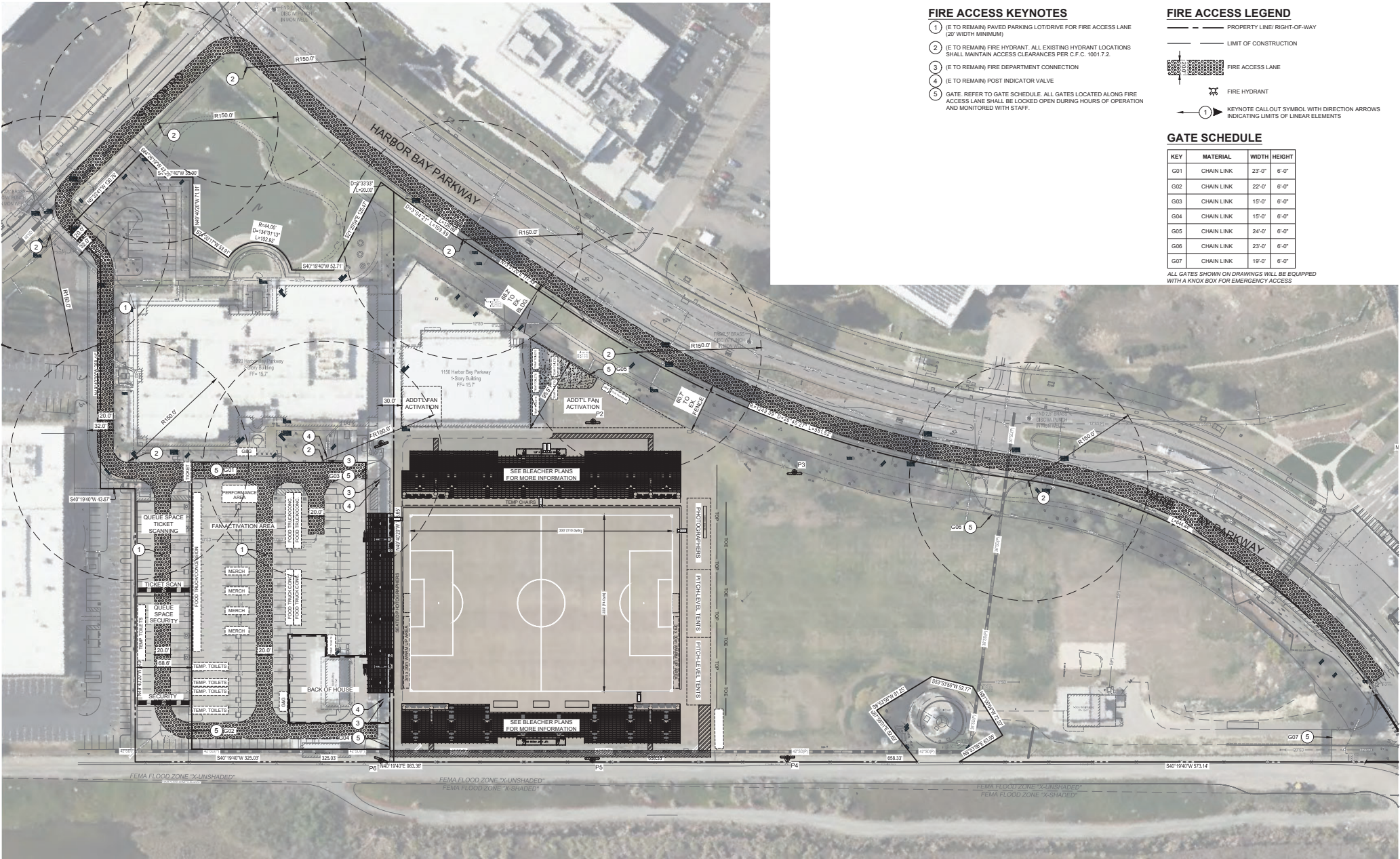
- PROPERTY LINE/ RIGHT-OF-WAY
- LIMIT OF CONSTRUCTION
- ACCESSIBLE PATH OF TRAVEL
- ➔ INGRESS/ EGRESS PATH OF TRAVEL
- ▨ SAFE DISPERSAL AREA
- ① KEYNOTE CALLOUT SYMBOL WITH DIRECTION ARROWS INDICATING LIMITS OF LINEAR ELEMENTS

**GATE SCHEDULE**

KEY	MATERIAL	WIDTH	HEIGHT	LOAD	CAPACITY
G01	CHAIN LINK	23'-0"	6'-0"	2200 PEOPLE	4800 PEOPLE
G02	CHAIN LINK	22'-0"	6'-0"	2200 PEOPLE	4400 PEOPLE
G03	CHAIN LINK	15'-0"	6'-0"	1750 PEOPLE	3000 PEOPLE
G04	CHAIN LINK	15'-0"	6'-0"	1750 PEOPLE	3000 PEOPLE
G05	CHAIN LINK	24'-0"	6'-0"	1750 PEOPLE	4800 PEOPLE
G06	CHAIN LINK	23'-0"	6'-0"		
G07	CHAIN LINK	19'-0"	6'-0"		

This plan document set is the sole property of Lloyd Consulting Group, LLC. No alterations to these plans, other than adding "as-built" information, are allowed by anyone other than authorized Lloyd Consulting Group, LLC employees.

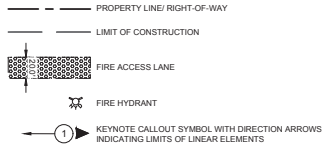
**SP-02 SITE ACCESS + INGRESS/ EGRESS PLAN**  
**OAKLAND ROOTS & SOUL SC TRAINING CENTER IMPROVEMENTS**



**FIRE ACCESS KEYNOTES**

- ① (E TO REMAIN) PAVED PARKING LOT/DRIVE FOR FIRE ACCESS LANE (20' WIDTH MINIMUM)
- ② (E TO REMAIN) FIRE HYDRANT. ALL EXISTING HYDRANT LOCATIONS SHALL MAINTAIN ACCESS CLEARANCES PER C.F.C. 1001.7.2.
- ③ (E TO REMAIN) FIRE DEPARTMENT CONNECTION
- ④ (E TO REMAIN) POST INDICATOR VALVE
- ⑤ GATE. REFER TO GATE SCHEDULE. ALL GATES LOCATED ALONG FIRE ACCESS LANE SHALL BE LOCKED OPEN DURING HOURS OF OPERATION AND MONITORED WITH STAFF.

**FIRE ACCESS LEGEND**



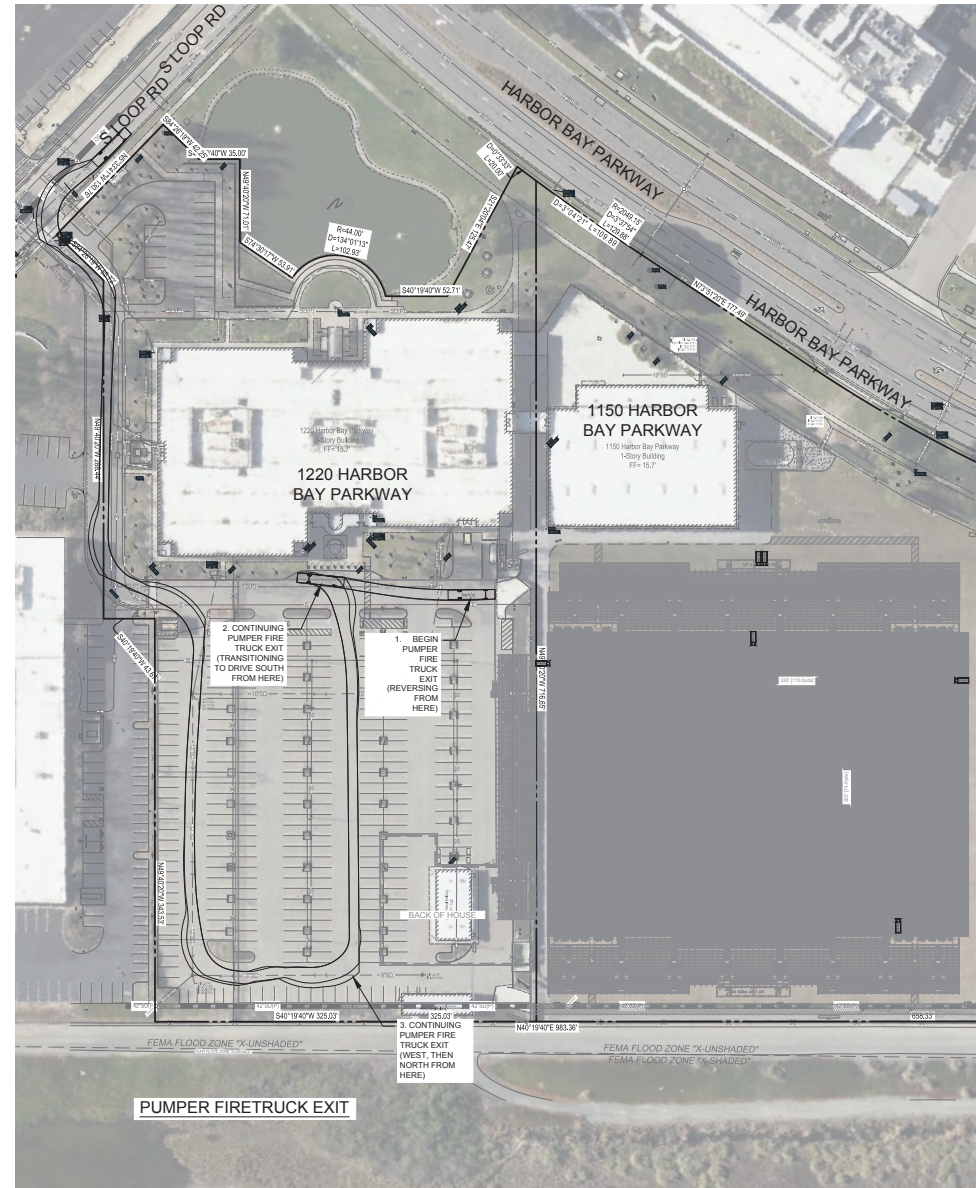
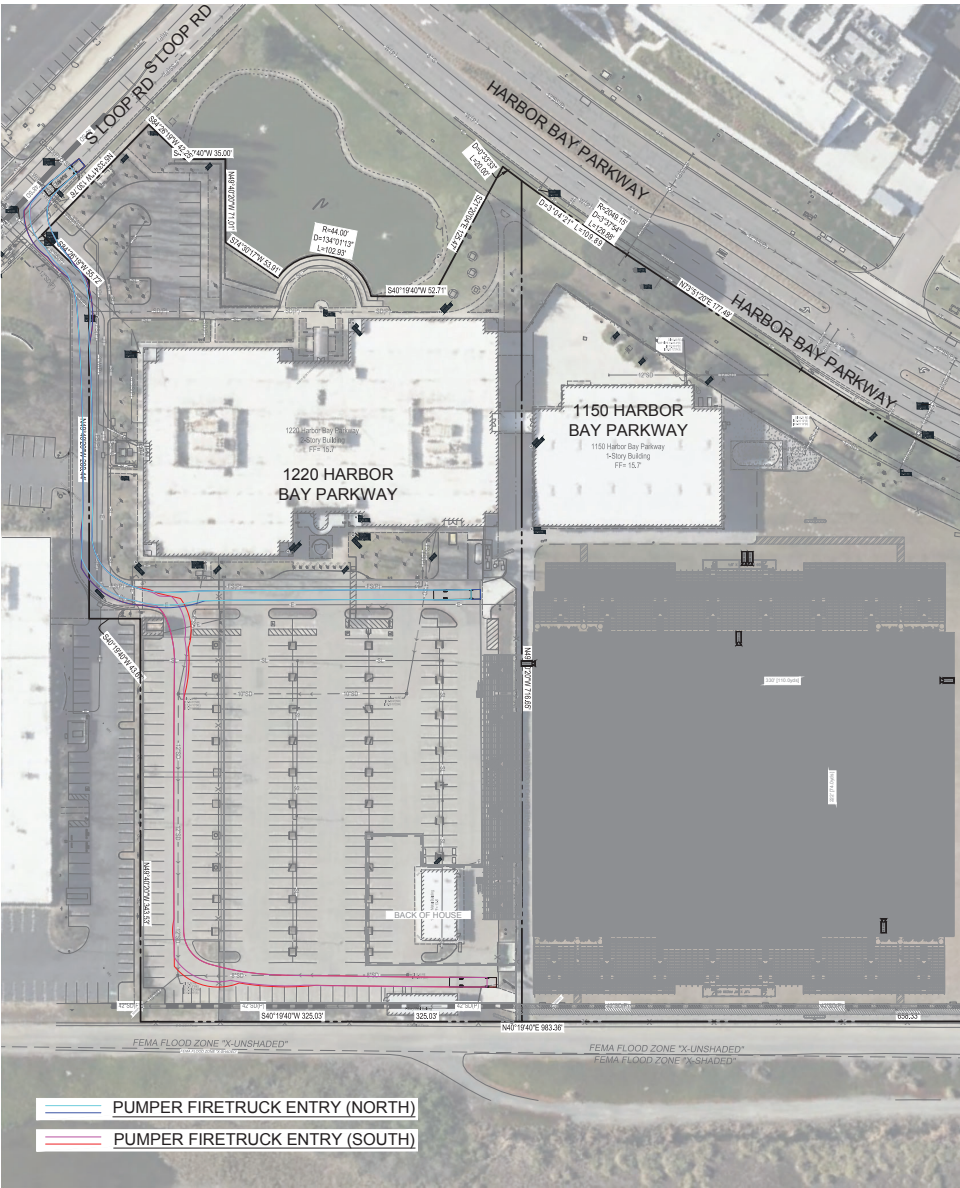
**GATE SCHEDULE**

KEY	MATERIAL	WIDTH	HEIGHT
G01	CHAIN LINK	23'-0"	6'-0"
G02	CHAIN LINK	22'-0"	6'-0"
G03	CHAIN LINK	15'-0"	6'-0"
G04	CHAIN LINK	15'-0"	6'-0"
G05	CHAIN LINK	24'-0"	6'-0"
G06	CHAIN LINK	23'-0"	6'-0"
G07	CHAIN LINK	19'-0"	6'-0"

ALL GATES SHOWN ON DRAWINGS WILL BE EQUIPPED WITH A KNOX BOX FOR EMERGENCY ACCESS

This plan document set is the sole property of Lloyd Consulting Group, LLC. No alterations to these plans, other than adding "as-built" information, are allowed by anyone other than authorized Lloyd Consulting Group, LLC employees.  
 2:\Shared\Project\20-156 root\issuing to renovation\construction documents\20-156 - Fire Access Plan.dwg 6/10/2026 3:18 PM

**SP-03 FIRE ACCESS PLAN**  
**OAKLAND ROOTS & SOUL SC TRAINING CENTER IMPROVEMENTS**



This plan document set is the sole property of Lloyd Consulting Group, LLC. No alterations to these plans, other than adding "as-built" information, are allowed by anyone other than authorized Lloyd Consulting Group, LLC employees.

Z:\Shared\Projects\25-154 roots training to veneer\construction documents\25-154 - Vehicle Tracking.dwg 6/10/2025 3:18 PM



DATE: June 8, 2025  
PREPARED BY: ZACH PLUM, PE (630) 742-5011

## SP-04 VEHICLE TRACKING - PERMANENT SETUP OAKLAND ROOTS & SOUL SC TRAINING CENTER IMPROVEMENTS

